

NEW MEXICO OIL CONSERVATION COMMISSION  
WELL LOCATION AND ACREAGE DEDICATION AT

Form C-102  
Supersedes C-12H  
Effective 1-1-65

All distances must be from the outer boundaries of the section.

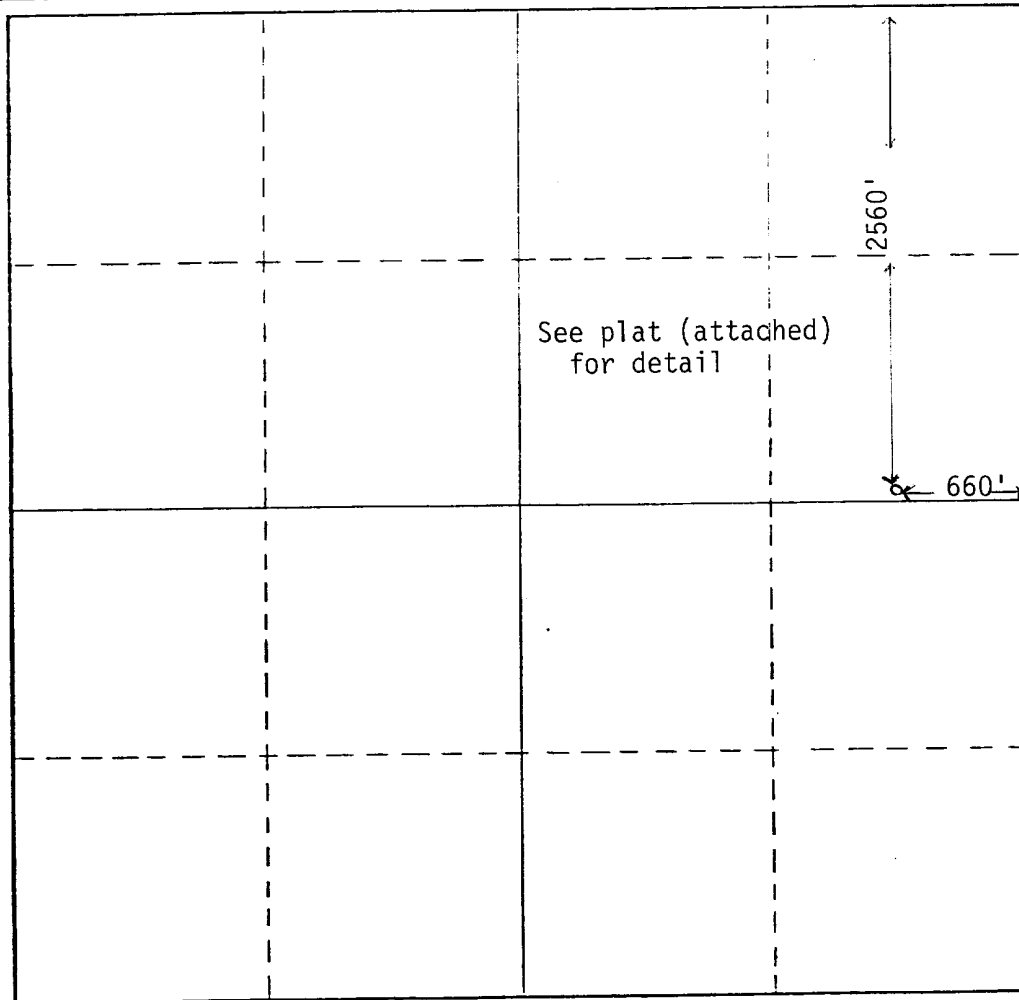
Operator Mesa Petroleum Co. ✓			Lease Bogle State Com		Well No. 1
Unit Letter HI	Section 2	Township 16 South	Range 27 East	County Eddy	
Actual Footage Location of Well: 2560 feet from the North line and 660 feet from the East line					
Ground Level Elev. 3578.2	Producing Formation Atoka	Pool Undesignated	Dedicated Acreage: 273.18 Acres		

1. Outline the acreage dedicated to the subject well by colored pencil or hachure marks on the map below.
2. If more than one lease is dedicated to the well, outline each and identify the ownership thereof (both as to working interest and royalty).
3. If more than one lease of different ownership is dedicated to the well, have the interests of all owners been consolidated by communitization, unitization, force-pooling, etc?

☒ Yes ☐ No If answer is "yes," type of consolidation unitizations & communitization (being processed)

If answer is "no," list the owners and tract descriptions which have actually been consolidated. (Use reverse side of this form if necessary.)

No allowable will be assigned to the well until all interests have been consolidated (by communitization, unitization, forced-pooling, or otherwise) or until a non-standard unit, eliminating such interests, has been approved by the Commission.



CERTIFICATION

I hereby certify that the information contained herein is true and complete to the best of my knowledge and belief.

*Steve A Douglas*

Name

Steve A. Douglas

Position

Staff Engineer

Company

Mesa Petroleum Co.

Date

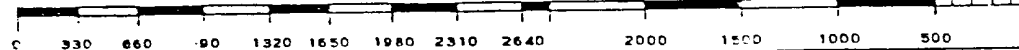
December 4, 1978

I hereby certify that the well location shown on this plat was plotted from field notes of actual surveys made by me or under my supervision, and that the same is true and correct to the best of my knowledge and belief.

Date Surveyed

Registered Professional Engineer and/or Land Surveyor

Certificate No.



27

