

RECEIVED

NMOCC COPY

(Other instructions on reverse side)

Budget Bureau No. 42-R1425

NOV 16 1977  
 UNITED STATES  
 DEPARTMENT OF THE INTERIOR  
 GEOLOGICAL SURVEY

30-015-22347

## APPLICATION FOR PERMIT TO DRILL, DEEPEN, OR PLUG BACK

1a. TYPE OF WORK ARTESIA, OFFICEDRILL ☒DEEPEN ☐PLUG BACK ☐

b. TYPE OF WELL

OIL WELL ☒GAS WELL ☒

OTHER

SINGLE ZONE ☒MULTIPLE ZONE ☐

2. NAME OF OPERATOR

MorOilCo, Inc.

3. ADDRESS OF OPERATOR

Drawer I, Artesia, N.M. 88210

4. LOCATION OF WELL (Report location clearly and in accordance with any State requirements.)\*

At surface

1980 from South line

660 from West line

At proposed prod. zone

Unit L

Miss.

14. DISTANCE IN MILES AND DIRECTION FROM NEAREST TOWN OR POST OFFICE\*

7 miles south-east of Lake Arthur.

15. DISTANCE FROM PROPOSED\*

LOCATION TO NEAREST

PROPERTY OR LEASE LINE, FT.

(Also to nearest drig. unit line, if any)

660 &amp; 1980

none

16. NO. OF ACRES IN LEASE

480

17. NO. OF ACRES ASSIGNED TO THIS WELL

18. DISTANCE FROM PROPOSED\*

TO NEAREST WELL, DRILLING, COMPLETED, OR APPLIED FOR, ON THIS LEASE, FT.

none

19. PROPOSED DEPTH

8800'

20. ROTARY OR CABLE TOOLS

Rotary

21. ELEVATIONS (Show whether DF, RT, GR, etc.)

3532'GL

22. APPROX. DATE WORK WILL START\*

ASAP

23.

## PROPOSED CASING AND CEMENTING PROGRAM

SIZE OF HOLE	SIZE OF CASING	WEIGHT PER FOOT	SETTING DEPTH	QUANTITY OF CEMENT
17 1/2"	12 3/4"	34#	300'	250sx Class C, 2%CaCl, circ.
11"	8 5/8"	24#	1850'	500sx HOWCO Lite, 200sx
				Neat, 2% CaCl, circ.
7 7/8"	4 1/2"	10.5#	8800'	300sx Class H, 5/10 of 1%
				Halad 22, 3/10 of 1% CFR2 & 5# KCL/sx.

Will run DST's as necessary, and log on completion,  
 to evaluate zones.

RECEIVED

OCT 11 1977

U.S. GEOLOGICAL SURVEY  
 ARTESIA, NEW MEXICO

IN ABOVE SPACE DESCRIBE PROPOSED PROGRAM: If proposal is to deepen or plug back, give data on present productive zone and proposed new productive zone. If proposal is to drill or deepen directionally, give pertinent data on subsurface locations and measured and true vertical depths. Give blowout preventer program, if any.

24.

SIGNED

William T. Morgan

TITLE

President

DATE

10-10-77

(This space for Federal or State office use)

PERMIT NO.

APPROVAL DATE

NOV 15 1977

APPROVED BY

Joe H. Lasa

TITLE

ACTING DISTRICT ENGINEER

DATE

NOV 15 1977

CONDITIONS OF APPROVAL, IF ANY:

THIS APPROVAL IS RESCINDED IF OPERATIONS  
 ARE NOT COMMENCED WITHIN 3 MONTHS.

EXPIRES

FEB 15 1978

\*See Instructions On Reverse Side

**N MEXICO OIL CONSERVATION COMMISS**  
**WELL LOCATION AND ACREAGE DEDICATION PLAT**

Form C-102  
 Supersedes C-128  
 Effective 1-1-65

All distances must be from the outer boundaries of the Section

Operator <b>MorOilCo</b>			Lease <b>Ross Fed.</b>		Well No. <b>1</b>
Unit Letter <b>L</b>	Section <b>10</b>	Township <b>16 South</b>	Range <b>27 East</b>	County <b>Eddy</b>	
Actual Footage Location of Well: <b>1980</b> feet from the <b>South</b> line and <b>660</b> feet from the <b>West</b> line					
Ground Level Elev. <b>3532.0</b>	Producing Formation <b>Miss.</b>	Pool <b>Und.</b>	Dedicated Acreage: <b>320</b> <del>320</del> <b>40</b> <del>40</del> <b>Acres</b>		

**RECEIVED**

**OCT 11 1977**

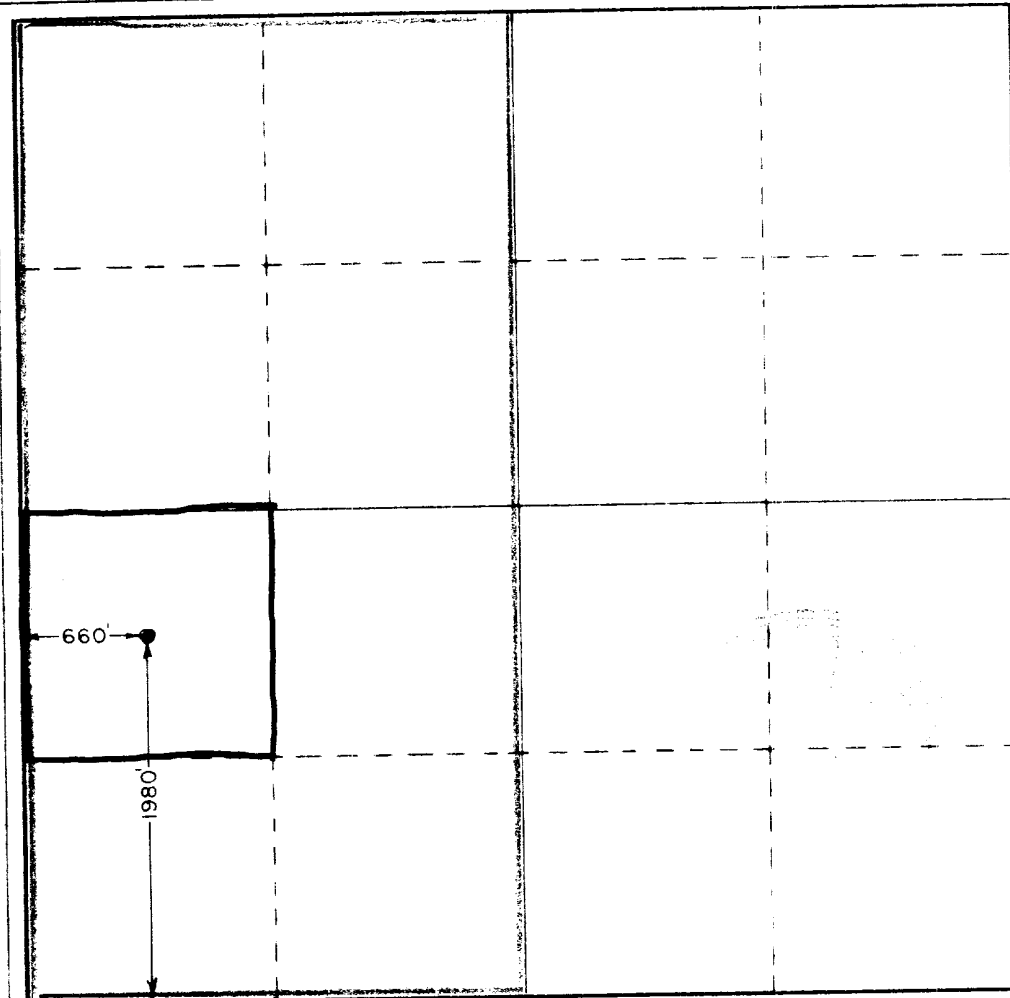
**U.S. GEOLOGICAL SURVEY  
 ARTESIA, NEW MEXICO**

- Outline the acreage dedicated to the subject well by colored pencil or hatchure marks on the plat above.
- If more than one lease is dedicated to the well, outline each and identify the ownership thereof both as to working interest and royalty).
- If more than one lease of different ownership is dedicated to the well, have the interests in all leases been consolidated by communitization, unitization, force-pooling, etc?

☐ Yes ☐ No If answer is "yes," type of consolidation \_\_\_\_\_

If answer is "no," list the owners and tract descriptions which have actually been consolidated. (Use reverse side of this form if necessary.) \_\_\_\_\_

No allowable will be assigned to the well until all interests have been consolidated (by communitization, unitization, forced-pooling, or otherwise) or until a non-standard unit, eliminating such interests, has been approved by the Commission.



**CERTIFICATION**

I hereby certify that the information contained herein is true and complete to the best of my knowledge and belief.

*William N. Morgan*  
 Name

**William N. Morgan**

Position  
**President**

Company  
**MorOilCo, Inc.**

Date  
**10-10-77**

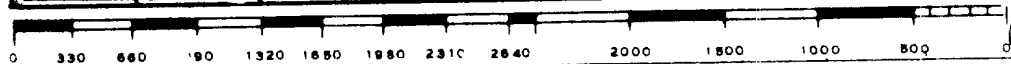
I hereby certify that the well location shown on this plat was plotted from field notes of actual surveys made by me or under my supervision, and that the same is true and correct to the best of my knowledge and belief.

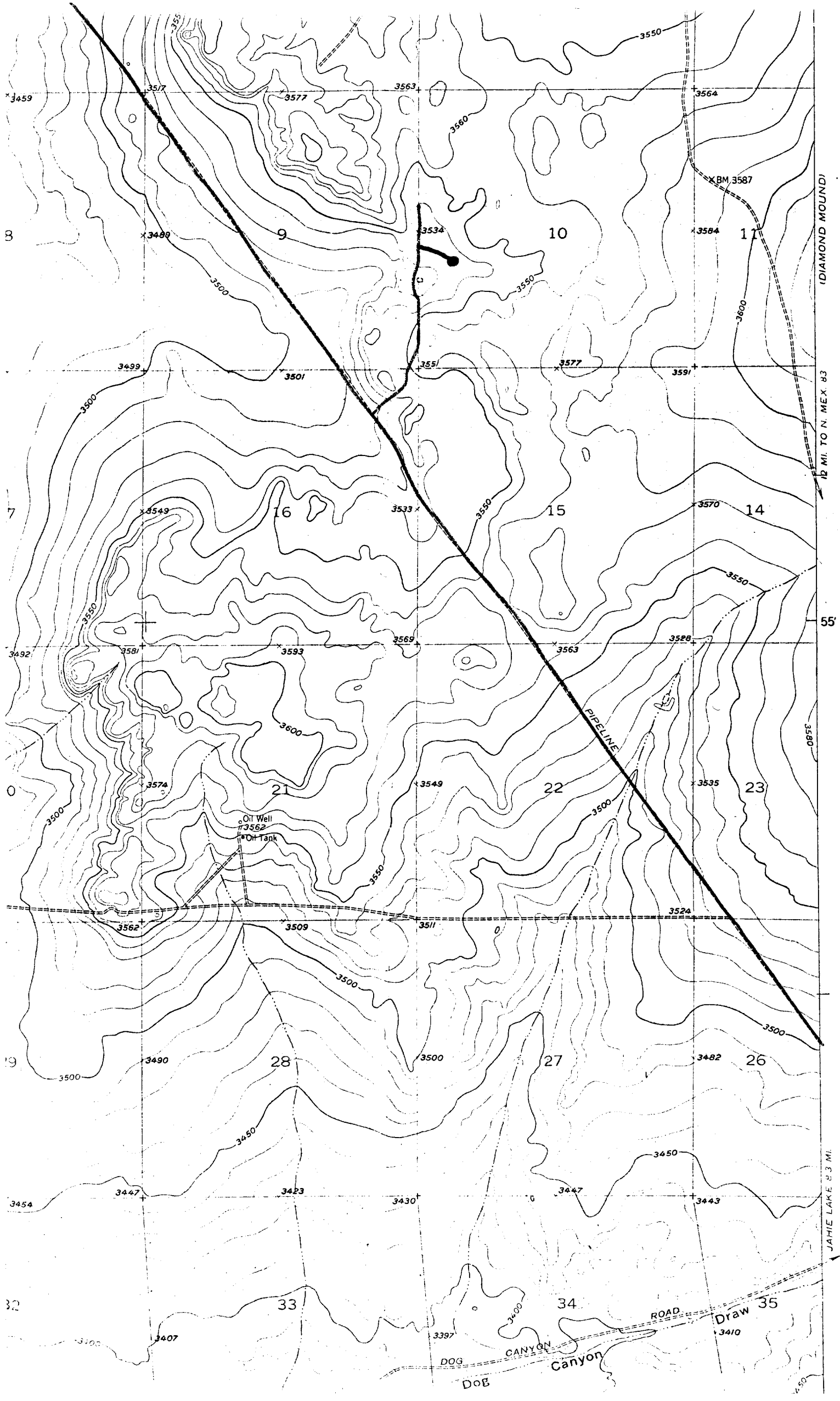
Date Surveyed  
**September 15, 1977**

Registered Professional Engineer and Land Surveyor

*Charles W. Wint*

Certificate No. **676**





- Expected Tops -

Grayburg	920
San Andres	1350
Glorieta	2725
Abo	4830
Wolfcamp	6050
Cisco	6850
Miss.	8650



WEK KILLING CO., INC. - RIG 2  
EQUIPMENT DESCRIPTION

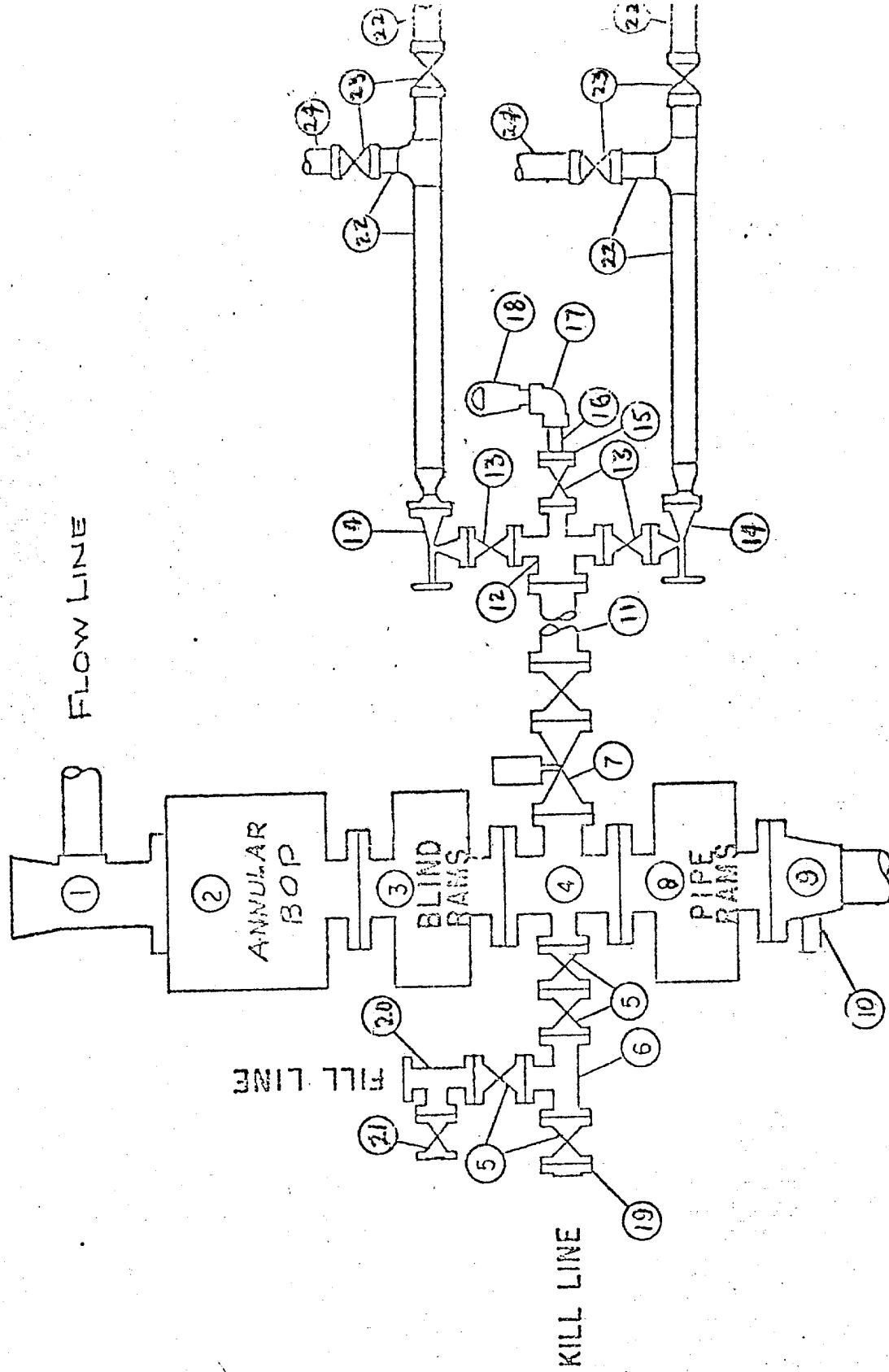
All equipment should be at least 3,000 psi WP or higher unless otherwise specified.

1. Bell nipple.
2. Hydril bag type preventer
3. Ram type pressure operated blowout preventer with blind rams.
4. Flanged spool with one 3-inch and one 2-inch (minimum) outlet,
5. 2-inch (minimum) flanged plug or gate valve.
6. 2-inch by 2-inch by 2-inch (minimum) flanged tee.
7. 3-inch gate valve.
8. Ram type pressure operated blowout preventer with pipe rams.
9. Flanged type casing head with one side outlet.
10. 2-inch threaded (or flanged) plug or gate valve.  
Flanged on 5000# WP, threaded on 3000# WP or less.
11. 3-inch flanged spacer spool.
12. 3-inch by 2-inch by 2-inch by 2-inch flanged cross.
13. 2-inch flanged plug or gate valve.
14. 2-inch flanged adjustable choke.
15. 2-inch threaded flange.
16. 2-inch XXH nipple.
17. 2-inch forged steel 90° Ell.
18. Cameron (or equal.) threaded pressure gage.
19. Threaded flange.
20. 2-inch flanged tee.
21. 2-inch flanged plug or gate valve.
22. 2½-inch pipe, 300' to pit, anchored.
23. 2½-inch SE valve.
24. 2½-inch line to steel pit or separator.

NOTES:

1. Items 3, 4 and 8 may be replaced with double ram type preventer with side outlets between the rams.
2. The two valves next to the stack on the fill and kill line to be closed unless drill string is being pulled.
3. Kill line is for emergency use only. This connection shall not be used for filling.
4. Replacement pipe rams and blind rams shall be on location at all times.
5. Only type U, LSW and QRC ram type preventers with secondary seals are acceptable for 5000 psi WP and higher BOP stacks.
6. Type E ram-type BOP's with factory modified side outlets may be used on 3000 psi or lower WP BOP stacks.

WEK DRILLING CO., INC. - Rig 2  
**BLOWOUT PREVENTER SPECIFICATION**



10/15/74