

NMOCC COPY

NEW MEXICO OIL CONSERVATION COMMISSION
WELL LOCATION AND ACREAGE DEDICATION PLAT

Form 7-1
Supersedes 6-2-66
Effective 1-1-68

All distances must be from the outer boundaries of the Section

Operator AMOCO PRODUCTION CO.		Lease TUGG Fed. Gas Com. AMOCO FED. "G" GAS COM.		Well No. 21 2	
Tract Letter 1	Section 34	Township 17 South	Range 27 East	County Eddy	
Actual Well Location of well: 1980 feet from the South line and 660 feet from the East line					
Ground Level Elev. 3589.2	Encasing Formation MORROW	Pool LOGAN DRAW manaw	Dedicated Acreage 320		

1. Outline the acreage dedicated to the subject well by colored pencil or hachure marks on the plat below.
2. If more than one lease is dedicated to the well, outline each and identify the ownership (working interest and royalty).
3. If more than one lease of different ownership is dedicated to the well, have the interests of all owners been consolidated by communitization, unitization, force-pooling, etc?

RECEIVED

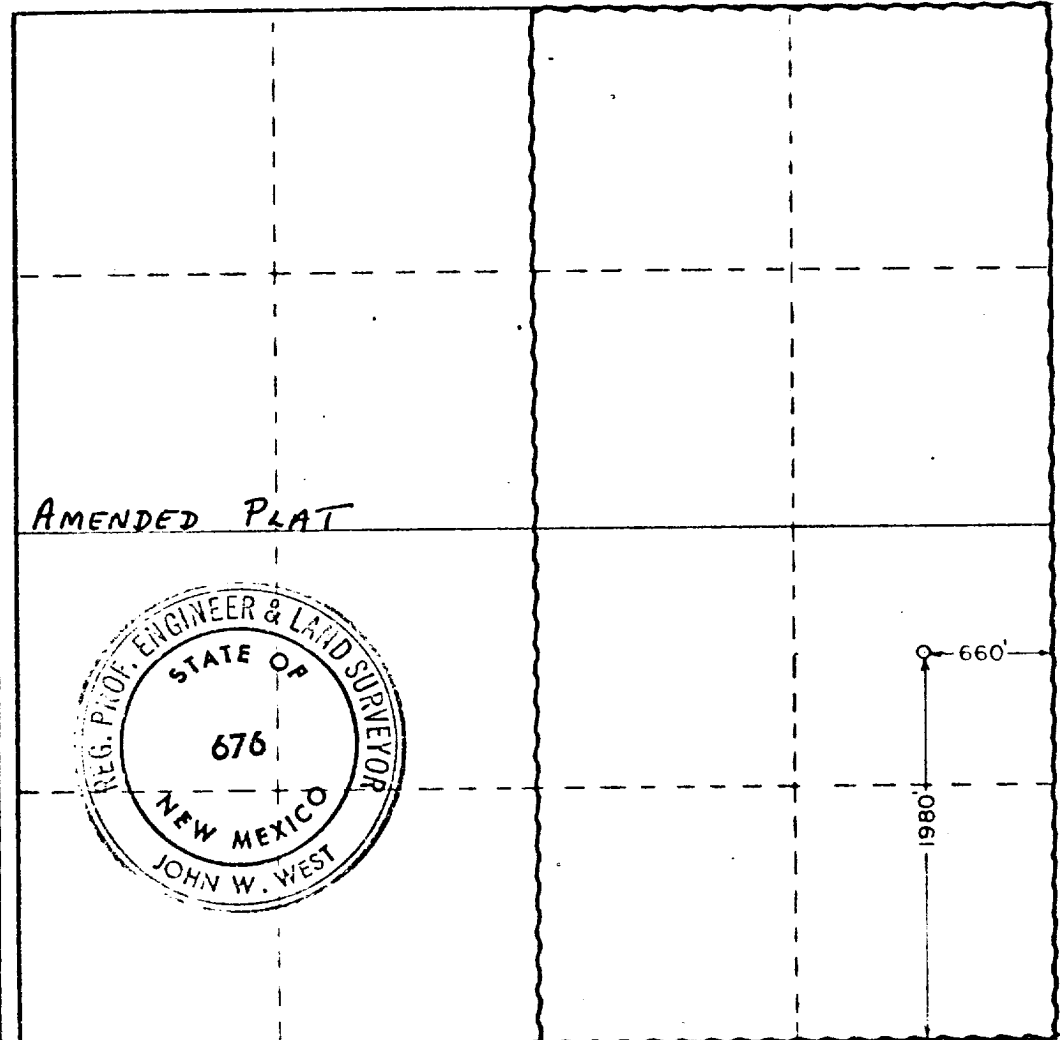
NOV 16 1977

**U.S. GEOLOGICAL SURVEY
ARTESIA, NEW MEXICO**

☐ Yes ☐ No If answer is "yes," type of consolidation _____

If answer is "no," list the owners and tract descriptions which have actually been consolidated. (Use reverse side of this form if necessary.) _____

No allowable will be assigned to the well until all interests have been consolidated (by communitization, unitization, forced-pooling, or otherwise) or until a non-standard unit, eliminating such interests, has been approved by the Commission.



CERTIFICATION

I hereby certify that the information contained herein is true and complete to the best of my knowledge and belief.

Name Ray W. Cox
Position Administrative Assistant
Company AMOCO PRODUCTION COMPANY
Date 11-15-77

I hereby certify that the well location shown on this plat was plotted from field notes of actual surveys made by me or under my supervision, and that the same is true and correct to the best of my knowledge and belief.

Date Surveyed September 10, 1977
Registered Professional Engineer and/or Land Surveyor John W. West
Certificate No. 676

