

NMOCC COPY

SUBMIT IN TRIPLICATE*
(Other instructions on
reverse side)Form approved.
Budget Bureau No. 42-R1425.UNITED STATES
DEPARTMENT OF THE INTERIOR
GEOLOGICAL SURVEY

APPLICATION FOR PERMIT TO DRILL, DEEPEN, OR PLUG BACK

1a. TYPE OF WORK

DRILL ☒DEEPEN ☐PLUG BACK ☐

b. TYPE OF WELL

OIL
WELL ☒GAS
WELL ☐

OTHER

SINGLE
ZONE ☐MULTIPLE
ZONE ☐

2. NAME OF OPERATOR

Collier & Collier

3. ADDRESS OF OPERATOR

P.O. Box 798, Artesia, New Mexico 88210

4. LOCATION OF WELL (Report location clearly and in accordance with any State requirements.)*

At surface 1650' FNL 1650' FWL

At proposed prod. zone

14. DISTANCE IN MILES AND DIRECTION FROM NEAREST TOWN OR POST OFFICE*

Approx. 6 miles north of Riverside

15. DISTANCE FROM PROPOSED*

LOCATION TO NEAREST
PROPERTY OR LEASE LINE, FT.
(Also to nearest drlg. unit line, if any)18. DISTANCE FROM PROPOSED LOCATION*
TO NEAREST WELL, DRILLING, COMPLETED,
OR APPLIED FOR, ON THIS LEASE, FT.

21. ELEVATIONS (Show whether DF, RT, GR, etc.)

3433 G.L.

23.

PROPOSED CASING AND CEMENTING PROGRAM

SIZE OF HOLE	SIZE OF CASING	WEIGHT PER FOOT	SETTING DEPTH	QUANTITY OF CEMENT
**10"	8 5/8"	24#	200'	Circulate to Surface 50 Sxs.
8"	7"	20#	880'	Shutoff String
6 3/4"	5 1/2"	14#	2200'	Circulate, 200 Sxs Class "C"

Plan to test San Andres Formation.

Surface pipe will be circulated to surface.

7" string will be pulled.

Production string will be circulated to surface.

RECEIVED

DEC 1 1977

U.S. GEOLOGICAL SURVEY
ARTESIA, NEW MEXICO** Surface water at Thompson Mill located east and north of well is approximately
125' deep.

IN ABOVE SPACE DESCRIBE PROPOSED PROGRAM: If proposal is to deepen or plug back, give data on present productive zone and proposed new productive zone. If proposal is to drill or deepen directionally, give pertinent data on subsurface locations and measured and true vertical depths. Give blowout preventer program, if any.

24. SIGNED Timothy D. Collier TITLE Partner DATE Dec. 1, 1977
(This space for Federal or State office use)PERMIT NO. _____ APPROVAL DATE DEC 16 1977APPROVED BY Joe D. Lara TITLE ACTING DISTRICT ENGINEER DATE DEC 16 1977
CONDITIONS OF APPROVAL, IF ANY:THIS APPROVAL IS RESCINDED IF OPERATIONS
ARE NOT COMMENCED WITHIN 3 MONTHS.
EXPIRES MAR 16 1978

*See Instructions On Reverse Side

NEW MEXICO OIL CONSERVATION COMMISSION
WELL LOCATION AND ACREAGE DEDICATION PLAT

Form C-102
Supersedes C-128
Effective 1-1-65

All distances must be from the outer boundaries of the Section.

Operator Collier & Collier Producing Co.			Lease Lark Federal		Well No. 1
Unit Letter F	Section 9	Township 16 South	Range 27 East	County Eddy	
Actual Footage Location of Well:					
1650 feet from the North		line and 1650 feet from the West		line N.M. 27M	
Ground Level Elev. 3433	Producing Formation SAN ANDRES	Pool WINDCHAT	Dedicated Acreage: 40 Acres		

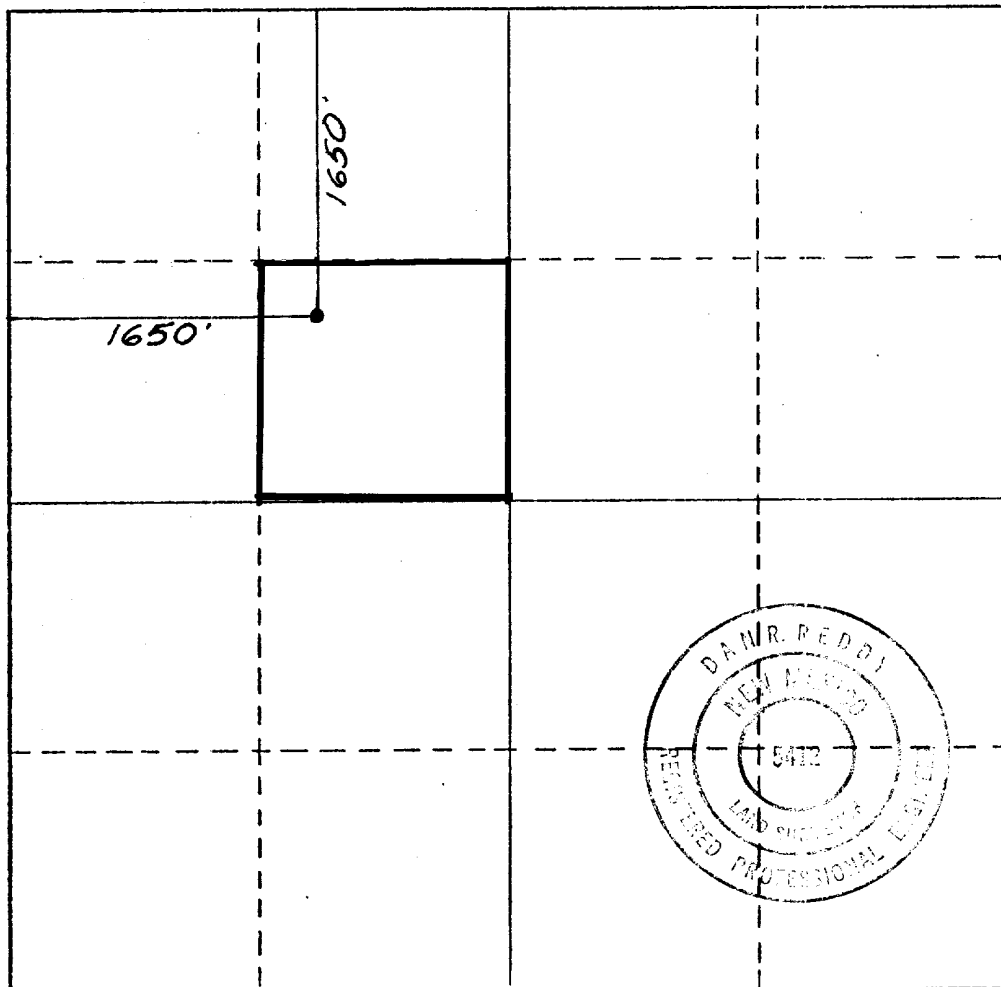
- Outline the acreage dedicated to the subject well by colored pencil or hatchure marks on the plat below.
- If more than one lease is dedicated to the well, outline each and identify the ownership thereof (both as to working interest and royalty).
- If more than one lease of different ownership is dedicated to the well, have the interests been consolidated by communitization, unitization, force-pooling, etc?

RECEIVED
DEC 1 1977
U.S. GEOLOGICAL SURVEY
ARTESIA, NEW MEXICO

☐ Yes ☐ No If answer is "yes," type of consolidation _____

If answer is "no," list the owners and tract descriptions which have actually been consolidated. (Use reverse side of this form if necessary.) _____

No allowable will be assigned to the well until all interests have been consolidated (by communitization, unitization, forced-pooling, or otherwise) or until a non-standard unit, eliminating such interests, has been approved by the Commission.



CERTIFICATION

I hereby certify that the information contained herein is true and complete to the best of my knowledge and belief.

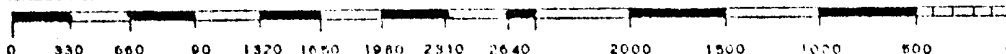
Name
Sammy D. Collier
Position
Partner
Company
Collier & Collier
Date
12/1/77

I hereby certify that the well location shown on this plat was plotted from field notes of actual surveys made by me or under my supervision, and that the same is true and correct to the best of my knowledge and belief.

Date Surveyed
Nov. 29, 1977

Registered Professional Engineer
and/or Land Surveyor

Dan R. Reddy
Certificate No.
NMPE&LS #5412



Collier & Collier ☆☆☆

DAVID C.

TIMOTHY D

Independent Oil Producers

PHONE 505-746-6520

BOX 798

ARTESIA, NEW MEXICO 88210

SUPPLEMENT

Lark Fed. #1 Lease No. NM#4028

1650' FNL 1650' FWL

N.M.P.M.

Eddy County, New Mexico

This form is provided as a supplement to U.S.G.S. Form 9-331C, "Application to Drill". The following additional information is submitted:

1. See Form 9-331C
2. See Form 9-331C
3. The geologic name of surface formation: Permian Yates
4. Cable Tool
5. See Form 9-331C
6. The estimated tops of important geologic markers are:
7 Rivers 182', Queen 517', San Andres 1300'
7. Estimated depths at which water, oil, gas other miners bearing formations are expected to be encountered are:

7 Rivers	-	+	182'	Gas
Queen	-	+	517'	Oil
Grayburg	-	+	930'	Oil & Gas
San Andres	-	+	1300'	(Undetermined) Oil?
8. The proposed casing program including size, grade and wight per foot at each string has been indicated on form 9-331C. All strings will be J-55 new or grade #1 used.
9. See Form 9-331C for cement. Proposal - Surface pipe cement will be Class "C" NEAT RUN 75% excess of calculated volume - circulate shut off pipe will be mudded in temporarily if production is encountered at lower depth. Production string will be cemented with Class "C" net 200 Sxs to circulate back to surface.
10. Pressure control head for cable tool drilling operation attatched to Form 9-331C. Type DV Pressure operated control.
11. Not applicable - Cable tool.
12. Testing will be bail test on all formations.

Collier & Collier ☆☆☆

DAVID C.

TIMOTHY D

Independent Oil Producers

PHONE 505-746-6520

BOX 798

ARTESIA, NEW MEXICO 88210

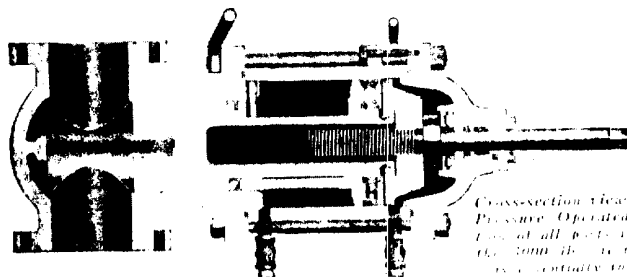
-2-

13. We anticipate no abnormal pressures or water, gas.

15. Starting date will be December 15, 1977.

TYPE DV PRESSURE OPERATED GATE VALVES

3000-4000-6000 and 10,000 Lbs. Test



Cross-section view of the Cameron 6000 lbs. test Pressure Operated Gate Valve. The construction of all parts is substantially heavier than in the 4000 lbs. test model; the design, however, is substantially the same for all test pressures.

This fast, positive-sealing Cameron Pressure Operated Gate Valve has a number of features of design and construction which enable it to provide the highest degree of safe, dependable control over destructive well pressures. Used either as a drilling-through valve, as a flow-line valve, or at any vital point in a drilling or completion control hook-up, it affords maximum security against loss of control.

Remote control and pressure operation, eliminating virtually all personal hazard to members of a drilling crew, inspire complete confidence in handling high pressures.

The Cameron Pressure Operated Gate Valve can be depended

upon to effect a leak-proof shut-off because of the unique design of its seat, and the fully tested and proved ram-gate packing element. Complete absence of delicate sealing surfaces, whose efficiency declines very rapidly under service conditions, marks the Cameron Valve as unique in its field. Ability to seal against any pressure, even if the valve seat be rusted, corroded, roughened or to a limited degree sand-cut, raises this valve into a class by itself.

See pages 552-554 of the 1941 Composite Catalog for complete mechanical details, or full details will gladly be provided on request.

CAMERON IRON WORKS, INC.

HOUSTON, TEXAS

EXPORT—74 Trinity Place, New York, N. Y. CALIFORNIA DISTRIBUTOR—The Howard Supply Co., Los Angeles. OKLAHOMA REPRESENTATIVE—Paul Edkin, Tulsa.

R 27 E

T
16
S

Sec. 6
Windmill

Sec. 5

Sec. 4

Sec. 7

Sec. 8

Sec. 9

Sec. 10

Sec. 11

Existing Road

Well Location
(Lark #1)

Sec.
18

Existing Pipe line Road

Sec.
19

Sec. 30

Artesia 3.8Mi.

US 82

NORTH

Scale 1"=5000'

Proposed Access

NOTE: Well location approximately
400' off existing pipe line
road

PREPARED BY: Dan R. Reddy PE&LS