

NMOCC COPY

SUBMIT IN TRIPLICATE\*

(Other instr. ns on  
reverse)Copy to SF  
Budget Bureau No. 42-R1423.UNITED STATES  
DEPARTMENT OF THE INTERIOR  
GEOLOGICAL SURVEY

## APPLICATION FOR PERMIT TO DRILL, DEEPEN, OR PLUG BACK

## 1a. TYPE OF WORK

DRILL ☒DEEPEN ☐PLUG BACK ☐

## b. TYPE OF WELL

OIL  
WELL ☒GAS  
WELL ☐

OTHER

SINGLE  
ZONE ☐MULTIPLE  
ZONE ☐

## 2. NAME OF OPERATOR

Fred M. Newman, Inc. ✓

## 3. ADDRESS OF OPERATOR

P. O. Box 7140, Midland, Texas 79703

## 4. LOCATION OF WELL (Report location clearly and in accordance with any State requirements.)

At surface

Unit Letter G-1980' FNL &amp; 1980' FEL

At proposed prod. zone

Sec. 10, 16S, 29E

## 14. DISTANCE IN MILES AND DIRECTION FROM NEAREST TOWN OR POST OFFICE\*

9 miles north of Loco Hills

O.C.C.  
ARTESIA, OFFICE

## 15. DISTANCE FROM PROPOSED\*

LOCATION TO NEAREST  
PROPERTY OR LEASE LINE, FT.

(Also to nearest drilg. line, if any)

660'

## 16. NO. OF ACRES IN LEASE

160

17. NO. OF ACRES ASSIGNED  
TO THIS WELL

40

## 18. DISTANCE FROM PROPOSED LOCATION\*

TO NEAREST WELL, DRILLING, COMPLETED,  
OR APPLIED FOR, ON THIS LEASE, FT.

-

## 19. PROPOSED DEPTH

2600

## 20. ROTARY OR CABLE TOOLS

Cable

## 21. ELEVATIONS (Show whether DF, RT, GR, etc.)

3723.7 - GR

## 22. APPROX. DATE WORK WILL START\*

On approval

23.

## PROPOSED CASING AND CEMENTING PROGRAM

SIZE OF HOLE	SIZE OF CASING	WEIGHT PER FOOT	SETTING DEPTH	QUANTITY OF CEMENT
11"	8 5/8"	24	370'	100 sacks
7 7/8"	4 1/2"	11.6	2600'	150 sacks

RECEIVED

DEC 13 1977

See Attached

U. S. GEOLOGICAL SURVEY  
ARTESIA, NEW MEXICO

IN ABOVE SPACE DESCRIBE PROPOSED PROGRAM: If proposal is to deepen or plug back, give data on present productive zone and proposed new productive zone. If proposal is to drill or deepen directionally, give pertinent data on subsurface locations and measured and true vertical depths. Give blowout preventer program, if any.

24.

SIGNED F.M. Newman (F.M. Newman) TITLE ownerDATE 12/6/77

(This space for Federal or State office use)

PERMIT NO.

APPROVAL DATE

DEC 28 1977

APPROVED BY

TITLE

ACTING DISTRICT ENGINEER

DATE

DEC 28 1977

CONDITIONS OF APPROVAL, IF ANY:

THIS APPROVAL IS RESCINDED IF OPERATIONS  
ARE NOT COMMENCED WITHIN 3 MONTHS.

EXPIRES MAR 28 1978

\*See Instructions On Reverse Side

NEW MEXICO OIL CONSERVATION COMMISSION  
WELL LOCATION AND ACREAGE DEDICATION AT

Form O-102  
Supersedes O-128  
Effective 1-1-55

All distances given are from the center of the well.

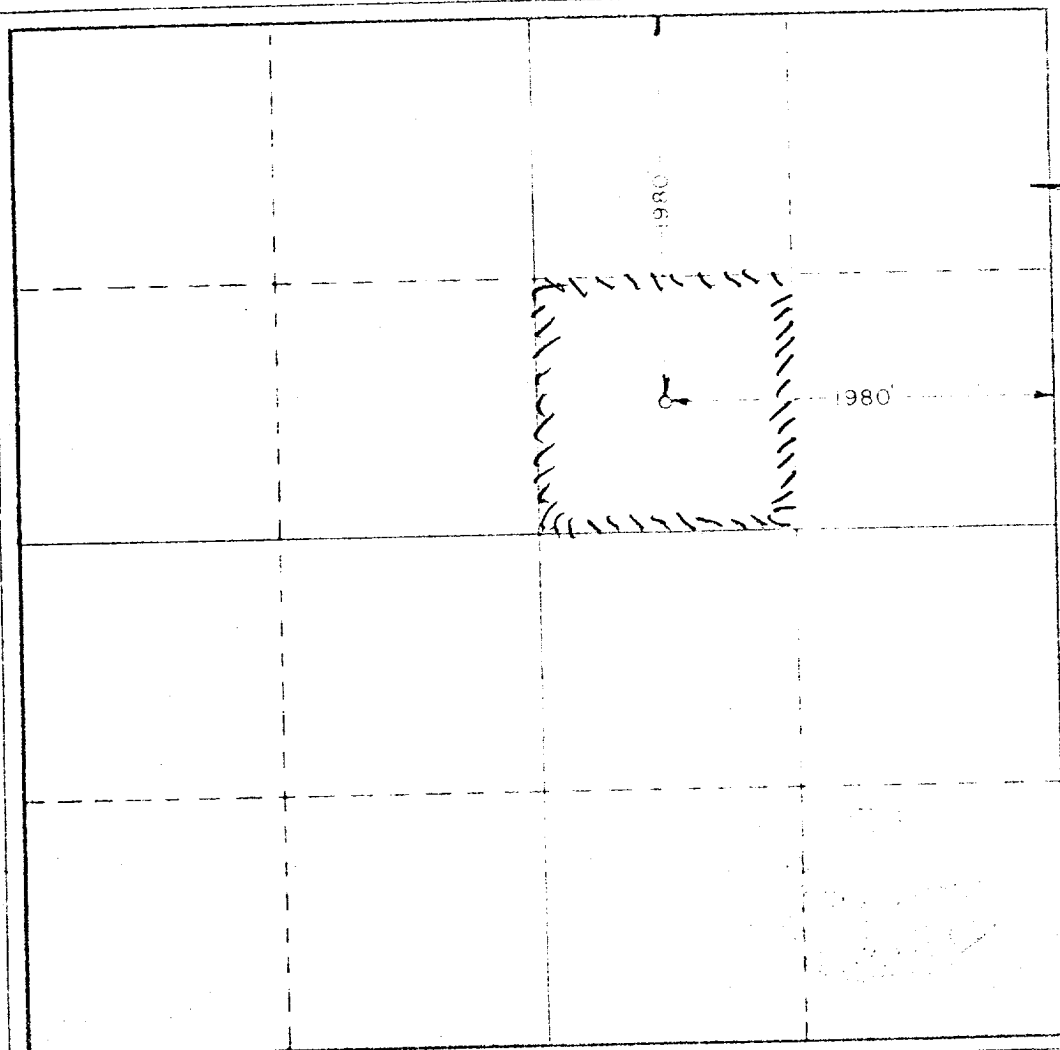
Operator <b>Fred Newman, Inc.</b>		Company <b>Conoco Federal</b>		Well No. <b>1</b>
Section <b>G</b>	Range <b>10</b>	Meridian <b>16 South</b>	County <b>29 East</b>	State <b>Eddy</b>
Date of Dedication <b>1980</b>		Year of Well <b>1980</b>		Direction of Well <b>East</b>
Ground Level, Feet <b>3723.7</b>	Production, bbls/day		Estimated Acreage <b>2</b>	

- Outline the acreage dedicated to the subject well by colored pencil or hatchure marks on the plat below.
- If more than one lease is dedicated to the well, outline each and identify the ownership thereof (both as to working interest and royalty).
- If more than one lease of different ownership is dedicated to the well, have the interests of all owners been consolidated by communitization, unitization, force-pooling, etc?

☐ Yes ☐ No If answer is "yes" type of consolidation \_\_\_\_\_

If answer is "no," list the owners and tract descriptions which have actually been consolidated. (Use reverse side of this form if necessary.) \_\_\_\_\_

No allowable will be assigned to the well until all interests have been consolidated (by communitization, unitization, forced-pooling, or otherwise) or until a non-standard unit, eliminating such interests, has been approved by the Commission.



CERTIFICATION

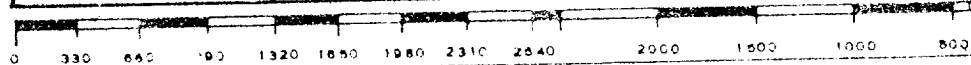
I hereby certify that the information contained herein is true and complete to the best of my knowledge and belief.

*[Signature]*  
**FRED M. NEWMAN**  
Owner  
**FRED M. NEWMAN, Inc.**  
12/9/77

I hereby certify that the well location shown on this plat was plotted from field notes of actual surveys made by me or under my supervision, and that the same is true and correct to the best of my knowledge and belief.

Date of Survey  
**December 3, 1977**  
Registered Professional Engineer  
in the State of New Mexico

*[Signature]*  
Certificate No. **676**



MULTI-POINT SURFACE USE AND OPERATIONS PLAN

Fred M. Newman, Inc.  
#1 "Conoco-Federal"  
1980' FEL & FNL  
Section 10-T16S-29E  
Eddy County, New Mexico  
(Development Well)

**RECEIVED**

DEC 13 1977

U. S. GEOLOGICAL SURVEY  
ARTESIA, NEW MEXICO

This plan is submitted with Form 9-331C, Application for Permit to Drill, covering the above described well. The purpose of this plan is to describe the location of the proposed well, the proposed construction activities and operations plan, the necessary surface disturbance and the procedures to be followed in rehabilitating the surface after completion of the operations, so that a complete appraisal can be made of the environmental effects associated with the operation.

1. EXISTING ROADS

- A. Exhibit A is a portion of the USGS Map of Eddy County, New Mexico, on a scale of 1"=2000' showing the area of the proposed wellsite and the roads in the vicinity. The wellsite is located approximately 9 miles north of Loco Hills, New Mexico, and the access route to the location is indicated in red on Exhibit A.
  - (1) Proceed west 4.5 miles on State Highway 82 from Loco Hills toward Artesia.
  - (2) Turn north at Kiwani Oil Field sign. (Road known as Kiwani Road).
  - (3) Go approximately 9.3 miles north, staying on main road to location access road. (See Exhibit A).
  - (4) The access road consists of a short stretch to an abandoned location (formerly the #1 Len Mayer). Location is approximately 4300' to the southwest and the proposed new access road is staked and clearly visible.
- B. No improvements and/or maintenance of existing road is anticipated.

2. PLANNED ACCESS ROAD.

- A. The proposed new access road will be approximately 4300' in length and 12' in width. It will be covered with compact caliche. The new road will meet the drilling pad at the northeast corner of the pad.
- B. The center line of the proposed new access road has been staked and flagged, and is clearly visible.

3. LOCATION OF EXISTING WELLS

A. See Exhibit B.

4. LOCATION OF EXISTING AND/OR PROPOSED FACILITIES

A. There are no production facilities on this lease.

B. In the event that the well is productive, the necessary production facilities will be installed on the drilling pad. If the well is productive of oil, electric power from existing lines will be utilized if necessary.

5. LOCATION AND TYPE OF WATER SUPPLY

A. It is planned to drill the proposed well with a Cable tool rig. Any water, if necessary, will be obtained from privately owned or commercial sources and will be hauled to the location by truck over the existing and proposed roads on Exhibit A.

6. SOURCE OF CONSTRUCTION MATERIALS.

A. Caliche for construction of the drilling pad and the new access road, and repairs to the existing access road, will be obtained from commercial sources.

7. METHODS OF HANDLING WASTE DISPOSAL

A. Drill cuttings will be disposed of in the reserve pits.

B. Drilling fluids will be allowed to evaporate in the reserve pits.

C. Water produced during operations will be collected in tanks until hauled to an approved disposal system or separate disposal application will be submitted to the U.S.G.S. for appropriate approval.

D. Oil produced during operations will be stored in tanks until sold.

E. Current laws and regulations pertaining to the disposal of human waste will be complied with.

F. Trash, waste paper, garbage and junk will be buried in a separate trash pit and covered with a minimum of 24 inches of dirt. All waste material will be contained to prevent scattering by the wind.

G. All trash and debris will be buried or removed from the wellsite within 30 days after finishing drilling and/or completion operations.

8. ANCILLARY FACILITIES

- A. None required.

9. WELLSITE LAYOUT

- A. Exhibit C shows the relative location and dimensions of the well pad, reserve pits, and major rig components.
- B. The ground surface at this site is relatively flat with occasional sand dunes. Pad area is level and will be covered with compact caliche.
- C. The reserve pits will be plastic lined.
- D. A 400 x 400' work area has been staked and flagged.

10. PLANS FOR RESTORATION OF THE SURFACE.

- A. After finishing drilling and/or completion operations, all equipment and other material not needed for further operations will be removed. The location will be cleaned of all trash and junk.
- B. Unguarded pits, if any, containing fluids will be fenced until they have been filled.
- C. This location is on Federal land and any special rehabilitations and/or revegetated requirements of the Surface Management Agency will be complied with and as expeditiously as possible. All pits will be filled and level within ninety days after abandonment.

11. OTHER INFORMATION.

- A. Topography: Land surface is undulating to gently rolling and dunny. From an elevation of 3723.7' at the wellsite, the land surface slopes gently towards the southwest at approximately 30' per mile.
- B. The topsoil at the wellsite is moderately hard sand.
- C. The vegetation cover at the wellsite is of moderate amount, and consists primarily of prairie grass, mesquite, and miscellaneous weeds and prairie flowers. No wildlife was observed, but it is likely that typical semi-arid desert wildlife, such as rabbits, coyotes, gophers, rodents and snakes inhabit the area. The area is used for cattle grazing.
- D. No lakes or ponds are near the drill site.

- E. The nearest occupied dwelling is approximately 8 miles due south. The nearest water well is a windmill approximately 2 miles north.
- F. Archeological, historical, and cultural sites: none observed in the area.
- G. Land Use: Limited cattle grazing.
- H. Surface Ownership: Wellsite is on Federal surface.

12. OPERATOR'S REPRESENTATIVES.

- A. The field representatives for assuring compliance with the approved surface use plan are:

Fred M. Newman  
Owner  
Fred M. Newman, Inc.  
P.O. Box 7140  
Midland, Texas 79703  
Telephone: 915-683-8754 (office)  
                  915-683-8588 (home)  
                  915-444-3542 (mobile)

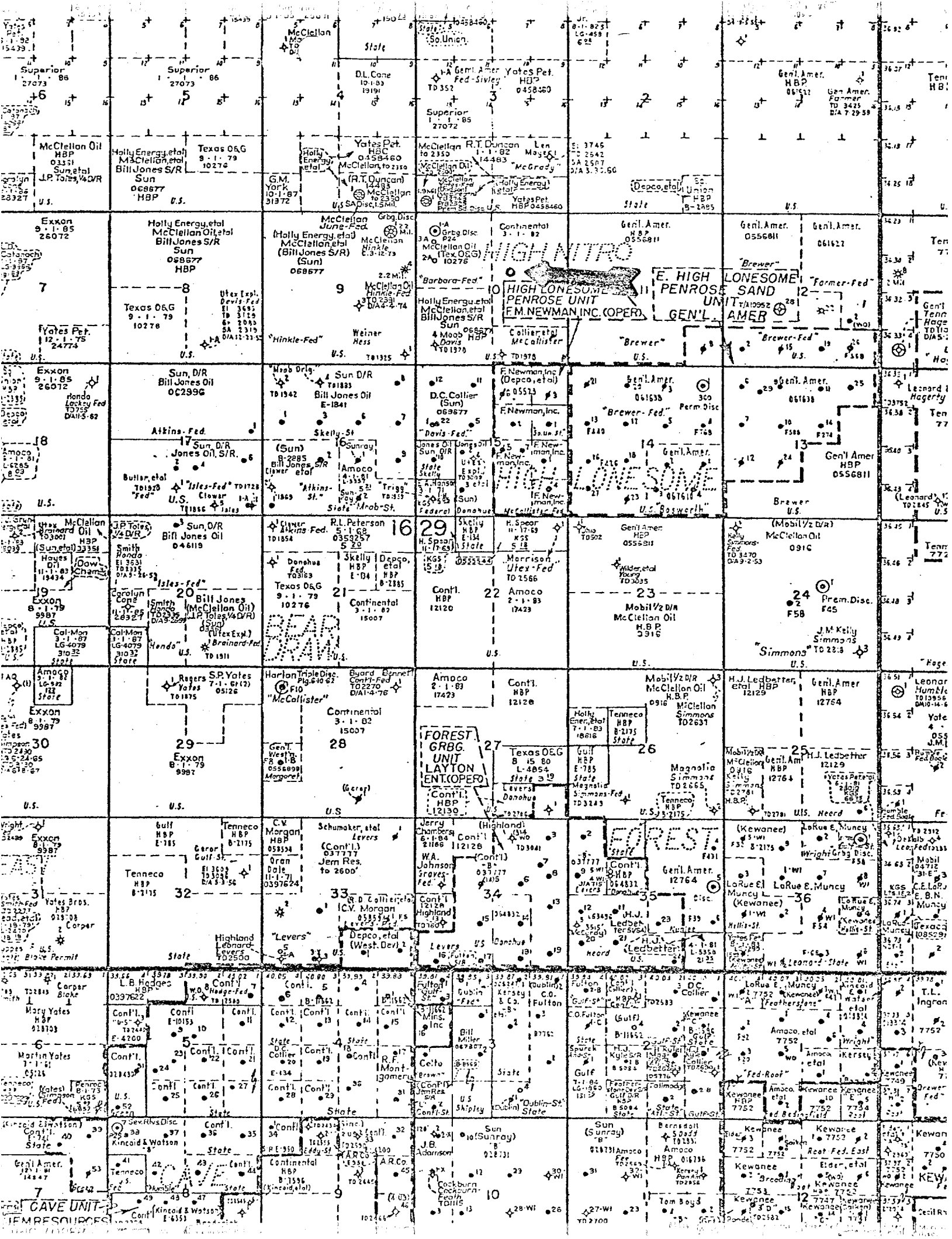
Rodger S. Dameron  
2005 Wilco Building  
Midland, Texas 79701  
Telephone: 915-682-4221 (office)  
                  915-683-5069 (home)

13. CERTIFICATION.

I hereby certify that I, or persons under my direct supervision, have inspected the proposed drillsite and access route; that I am familiar with the conditions which presently exist; that the statements made in this plan are to the best of my knowledge true and correct; and, that the work associated with the operations proposed herein will be performed by Fred M. Newman, Inc. and its contractors and subcontractors in conformity with this plan and the terms and conditions under which it is approved.

December 6, 1977  
Date

\_\_\_\_\_  
Fred M. Newman, President  
Fred M. Newman, Inc.



APPLICATION FOR DRILLING

FRED M. NEWMAN, INC.

No. 1 Conoco Federal - Section 10 - T16S - R29E

Eddy County, New Mexico

In conjunction with Form 9 - 331C, Application for Permit to Drill, Fred M. Newman, Inc., submits the following items of pertinent information in accordance with USGS requirements.

1. The estimated tops of geologic markers are as follows:

Yates	870'
Seven Rivers	1100'
Queen	1600'
Grayburg	2550'

2. The depths at which anticipated water, oil, or gas formation are expected to be encountered are:

Grayburg	2550-2600'
----------	------------

3. Proposed casing program - See Form 9-331C.
4. Pressure Control Equipment - See Form 9-331C and Exhibit
5. Mud Program: None planned-cable tool hole. See Form 9-331C.
6. Auxiliary Equipment

7. Testing, Logging, and Coring Program:

DST - None planned

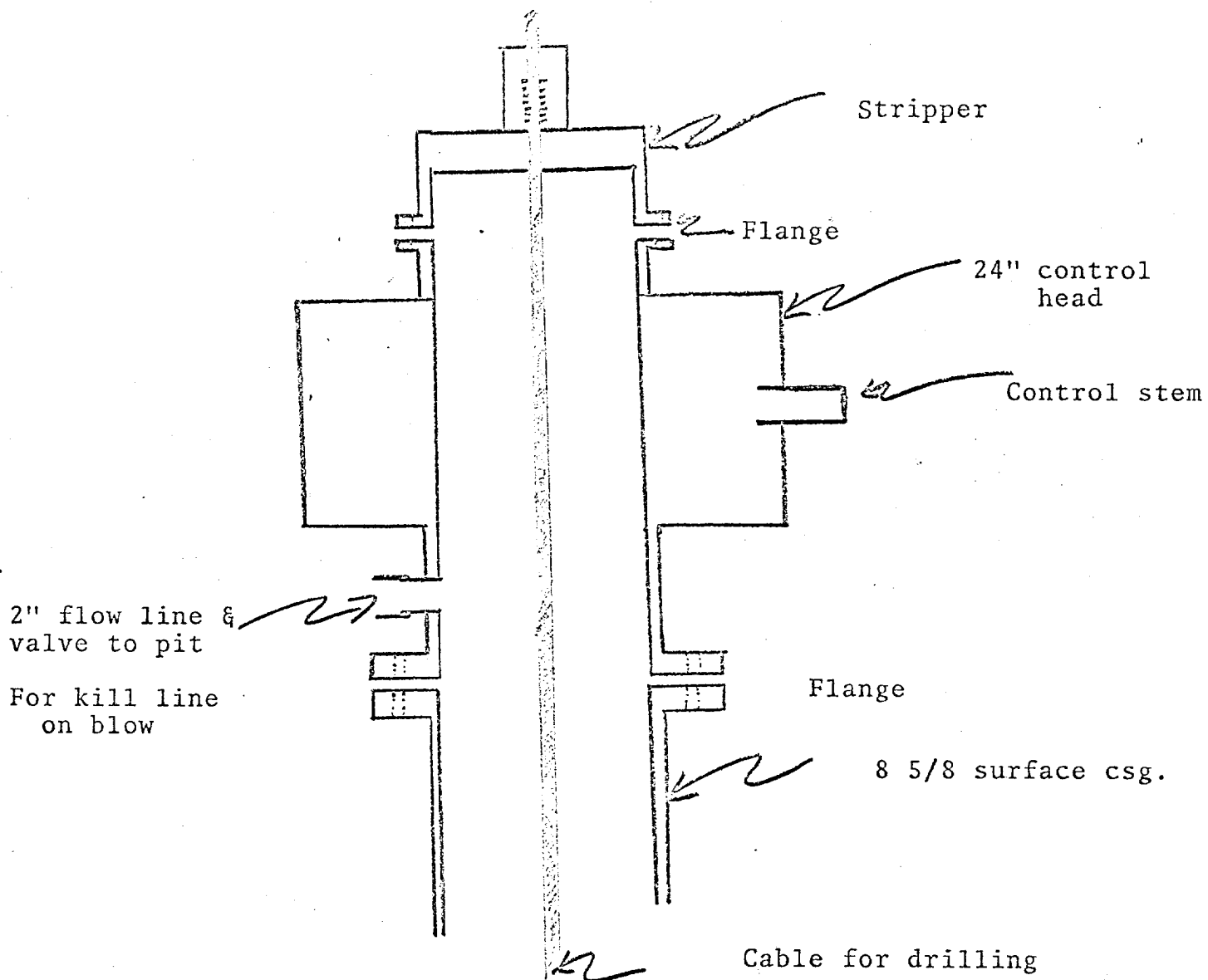
Catch 5' samples from surface to 1600'

Catch 2' samples 1600' to T. D.

Logging - Run Resistivity log openhole  
Run Gamma Ray Neutron in casing  
Coring - None planned

8. No abnormal pressures are anticipated.
9. Anticipated starting date: As soon as possible.





WELL HEAD CONTROL ASSEMBLY for:

Fred M. Newman, Inc.

Conoco Fed. Lease  
High Nitro Field