

APPROVED BY W. A. Gressett TITLE SUPERVISOR, DISTRICT II DATE APR 10 1978
CONDITIONS OF APPROVAL, IF ANY:

MEXICO OIL CONSERVATION COMMISS. 4
WELL LOCATION AND ACREAGE DEDICATION PLAT

Form C-102
Supersedes C-128
Effective 1-1-65

All distances must be from the outer boundaries of the Section.

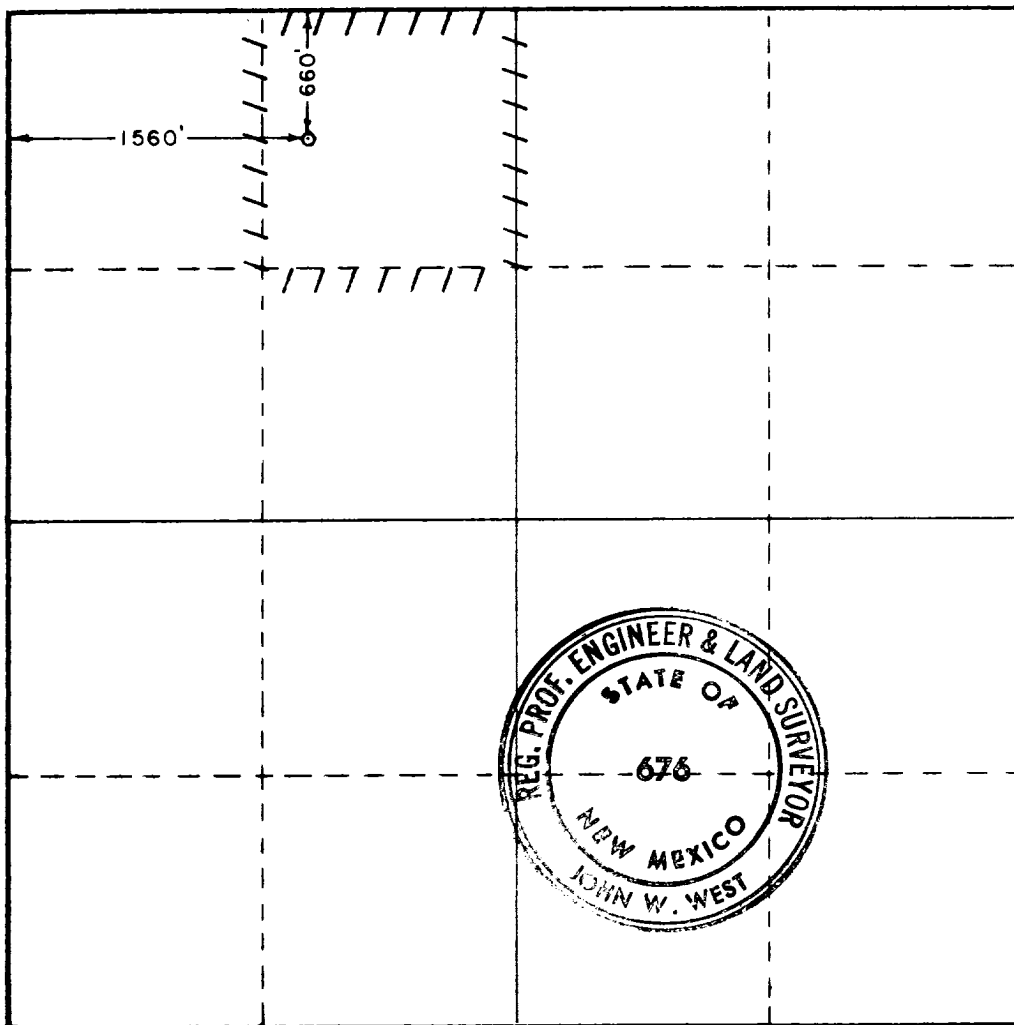
Operator Atlantic Richfield Co.			Lease Empire Abo Unit - E			Well No. 341		
Unit Letter C	Section 34	Township 17 South		Range 28 East	County Eddy			
Actual Footage Location of Well: 660 feet from the North line and 1560 feet from the West line								
Ground Level Elev. 3675.7		Producing Formation Abo Reef			Pool Empire Abo		Dedicated Acreage: 40 Acres	

1. Outline the acreage dedicated to the subject well by colored pencil or hachure marks on the plat below.
2. If more than one lease is dedicated to the well, outline each and identify the ownership thereof (both as to working interest and royalty).
3. If more than one lease of different ownership is dedicated to the well, have the interests of all owners been consolidated by communitization, unitization, force-pooling, etc?

☒ Yes ☐ No If answer is "yes," type of consolidation Unitization

If answer is "no," list the owners and tract descriptions which have actually been consolidated. (Use reverse side of this form if necessary.) _____

No allowable will be assigned to the well until all interests have been consolidated (by communitization, unitization, forced-pooling, or otherwise) or until a non-standard unit, eliminating such interests, has been approved by the Commission.



CERTIFICATION

I hereby certify that the information contained herein is true and complete to the best of my knowledge and belief.

Name

Position

Dist. Drlg. Supt.

Company

Atlantic Richfield Company

Date

4/4/78

I hereby certify that the well location shown on this plat was plotted from field notes of actual surveys made by me or under my supervision, and that the same is true and correct to the best of my knowledge and belief.

December 15, 1977

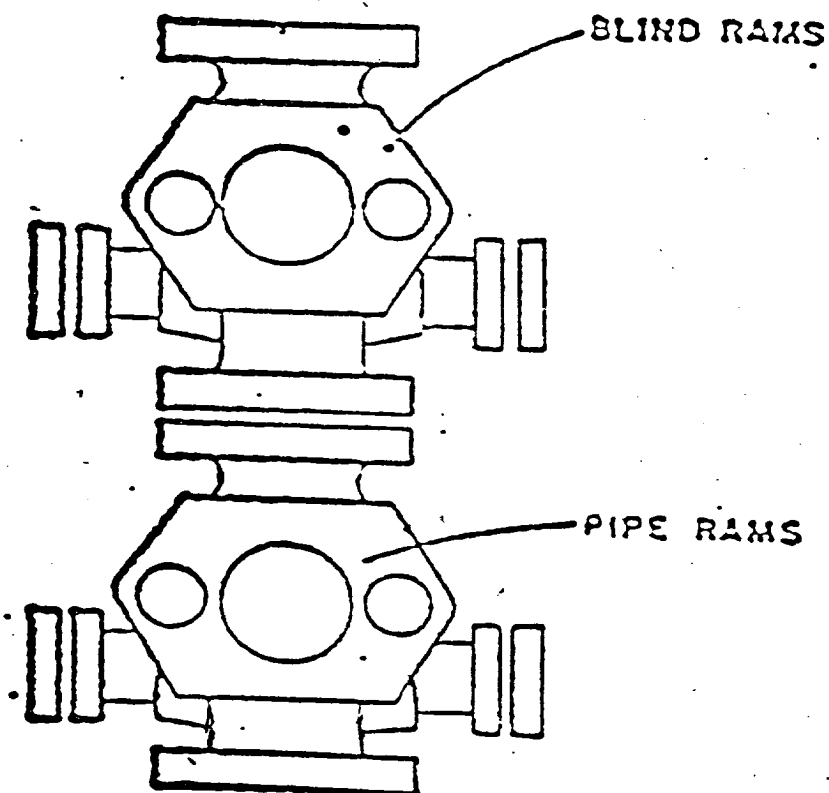
Date Surveyed

Registered Professional Engineer and/or Land Surveyor

John W. West

Certificate No.

676



ATLANTIC RICHFIELD COMPANY
Blow Out Preventer Program

Lease Name Empire Abo Unit "E"

Well No. 341

Location 660' FNL & 1560' FWL
Sec 34-17S-28E, Eddy County

BOP to be tested before installed on well and will be maintained in good working condition during drilling. All wellhead fittings to be of sufficient pressure to operate in a safe manner.