

NEW MEXICO OIL CONSERVATION COMMISSION
WELL LOCATION AND ACREAGE DEDICATION AT

Form C-102
 Supersedes C-128
 Effective 1-1-65

All distances must be from the outer boundaries of the Section.

| | | | | | |
|--|-------------------------------------|-----------------------------------|--|-----------------------|----------------------|
| Operator YATES PETROLEUM CORPORATION | | | Lease <u>DIVIDE</u> Federal JW Com | | Well No. 1 |
| Unit Letter K | Section 4 | Township 17 South | Range 24 East | County Eddy | |
| Actual Postage Location of Wells: | | | | | |
| 1980 feet from the South line and 1980 feet from the West line | | | | | |
| Ground Level Elev. 3755 | Producing Formation ATOKA | Pool UNDESIGNATED ATOKA | Dedicated Acreage per Section 320 | | |

- Outline the acreage dedicated to the subject well by colored pencil or hatchure marks on the plan below.
- If more than one lease is dedicated to the well, outline each and identify the ownership thereof (both as to working interest and royalty).
- If more than one lease of different ownership is dedicated to the well, have the interests of all owners been consolidated by communitization, unitization, force-pooling, etc?

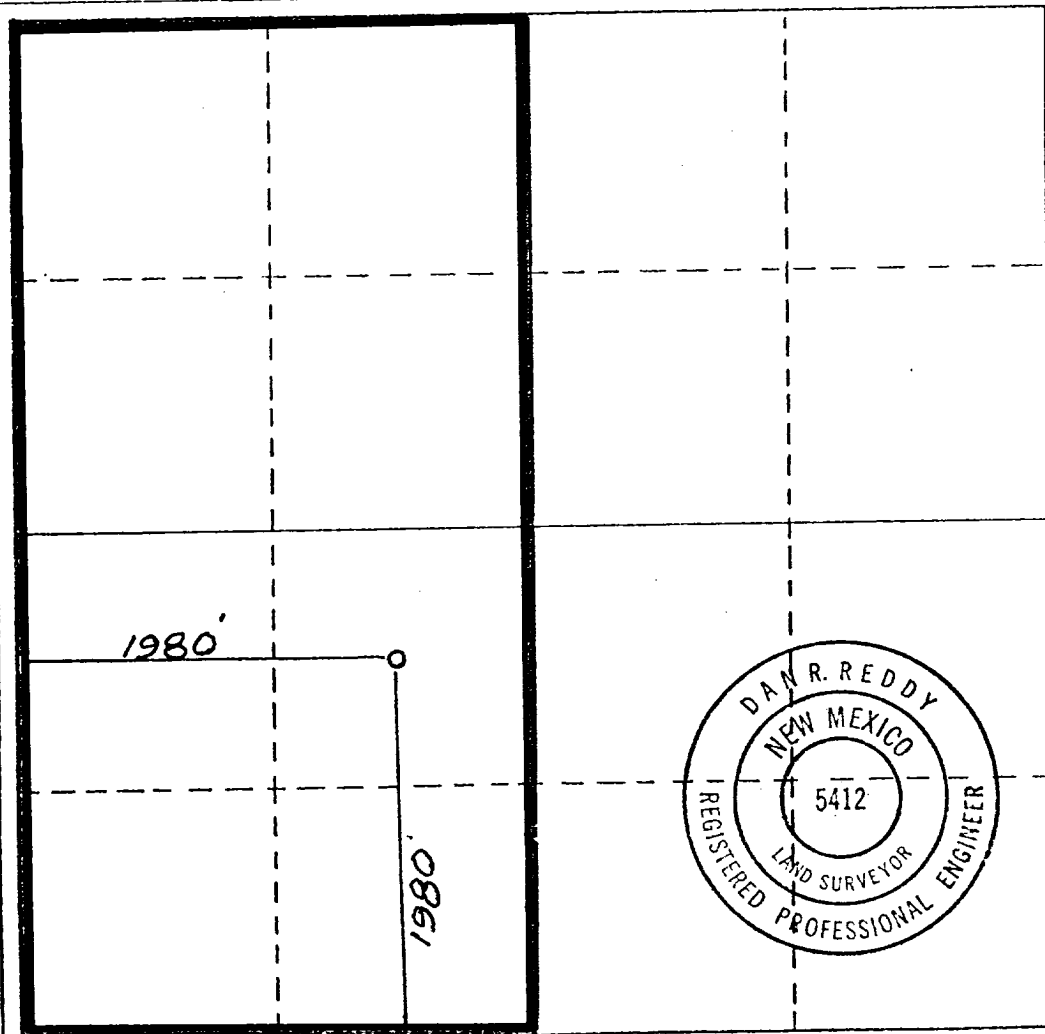
☒ Yes ☐ No If answer is "yes," type of consolidation COMMUNITIZATION

If answer is "no," list the owners and tract descriptions which have actually been consolidated. (Use reverse side of this form if necessary.) _____

No allowable will be assigned to the well until all interests have been consolidated (by communitization, unitization, forced-pooling, or otherwise) or until a non-standard unit, eliminating such interests, has been approved by the Commission.

RECEIVED

JUL 24 1978



U.S. GEOLOGICAL SURVEY
ARTESA, NEW MEXICO
 I hereby certify that the information contained herein is true and complete to the best of my knowledge and belief.

Gliserio Rodriguez
 Name

GLISERIO RODRIGUEZ
 Position

ENGINEERING ASSOCIATE
 Company

YATES PETROLEUM CORP.
 Date

July 21, 1978

I hereby certify that the well location shown on this plot was plotted from field notes of actual surveys made by me or under my supervision, and that the same is true and correct to the best of my knowledge and belief.

Date Surveyed

July 21, 1978

Registered Professional Engineer and/or Land Surveyor

Dan R. Reddy
 Certificate No.

NM PE&LS #5412

0 330 660 990 1320 1650 1980 2310 2640 2970 3300 3630 3960 0