

All measurements must be from the outer boundaries of the Sec

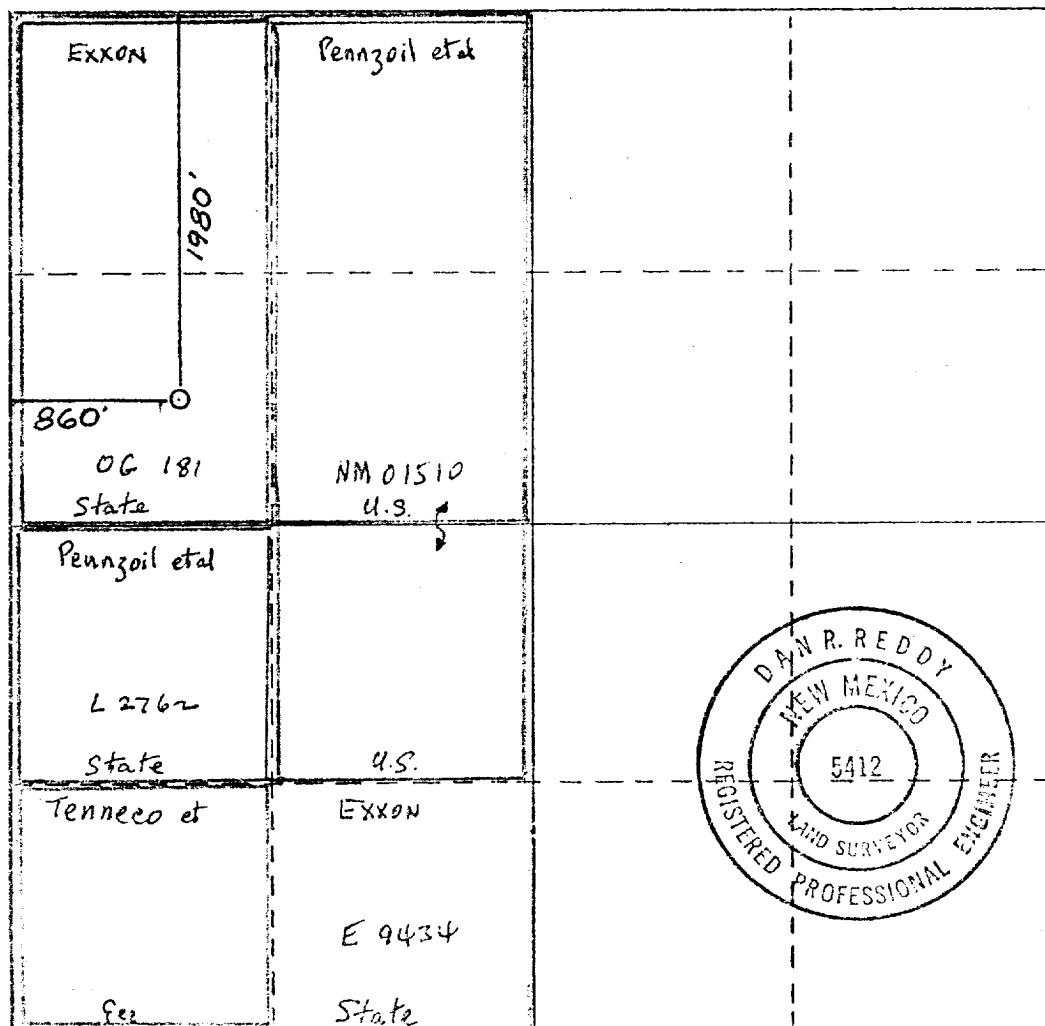
Operator <b>YATES PETROLEUM CORPORATION</b>			Lease <b>LUCAS STORE JZ STATE</b>		Well No. <b>1</b>
Unit Letter <b>E</b>	Section <b>23</b>	Township <b>17 South</b>	Range <b>28 East</b>	County <b>Eddy</b>	
Actual Footage Location of Well:					
1980 feet from the North		line and 860 feet from the West		Bore	
Ground Level Elev. <b>3693.44</b>	Producing Formation <b>Morrow</b>	Pool <b>Wildcat</b>	Dedicated Acreage <b>320</b>		

1. Outline the acreage dedicated to the subject well by colored pencil or hatchure marks on the plat below.
2. If more than one lease is dedicated to the well, outline each and identify the ownership thereof (both as to working interest and royalty).
3. If more than one lease of different ownership is dedicated to the well, have the interests of all owners been consolidated by communitization, unitization, force-pooling, etc?

☒ Yes ☐ No If answer is "yes" type of consolidation Communitization

If answer is "no," list the owners and tract descriptions which have actually been consolidated. (Use reverse side of this form if necessary.)

No allowable will be assigned to the well until all interests have been consolidated (by communitization, unitization, forced-pooling, or otherwise) or until a non-standard unit, eliminating such interests, has been approved by the Commission.



## CERTIFICATION

I hereby certify that the information contained herein is true and complete to the best of my knowledge and belief.

Name  
**Eddie M. Mahfood**

Position  
**ENGINEER**

Company  
**YATES PETROLEUM CORP**

Date  
**August 25 1978**

I hereby certify that the well location shown on this plat was plotted from field notes of actual surveys made by me or under my supervision, and that the same is true and correct to the best of my knowledge and belief.

Date Surveyed

**August 10, 1978**

Registered Professional Engineer  
and/or Land Surveyor

**Dan R. Reddy**

Certificate No.

**NM PE&LS #5412**