

NO. OF COPIES RECEIVED	5
DISTRIBUTION	
SANTA FE	1
FILE	1
U.S.G.S.	2
LAND OFFICE	
OPERATOR	1

NEW MEXICO OIL CONSERVATION COMMISSION

RECEIVED

DEC 14 1978

30-615-22760

Form C-101
Revised 1-1-65

5A. Indicate Type of Lease	
STATE <input type="checkbox"/>	FEE <input checked="" type="checkbox"/>

5. State Oil & Gas Lease No.

APPLICATION FOR PERMIT TO DRILL, DEEPEN, OR PLUG BACK

1a. Type of Work		7. Unit Agreement Name	
b. Type of Well OIL WELL <input type="checkbox"/> GAS WELL <input checked="" type="checkbox"/> OTHER <input type="checkbox"/>		8. Farm or Lease Name Patterson EL	
2. Name of Operator Yates Petroleum Corporation		9. Well No. 2	
3. Address of Operator 207 South 4th Street - Artesia, NM 88210		10. Field and Pool, or Wildcat East Eagle Creek state Undesignated moran	
4. Location of Well UNIT LETTER N LOCATED 660 FEET FROM THE South LINE 2310 West 31 17S 26E AND FEET FROM THE LINE OF SEC. TWP. RGE. NMPM		12. County Eddy	
19. Proposed Depth Approx 8600		19A. Formation Morrow	
20. Rotary or C.T. Rotary		21. Elevations (Show whether DF, RT, etc.) 3422' GR	
21A. Kind & Status Plug, Bond Blanket		21B. Drilling Contractor Capitan	
22. Approx. Date Work will start As soon as approved			

PROPOSED CASING AND CEMENT PROGRAM

SIZE OF HOLE	SIZE OF CASING	WEIGHT PER FOOT	SETTING DEPTH	SACKS OF CEMENT	EST. TOP
17 1/2"	13-3/8"	48#	Approx 360'	200 sx	Circulate
12 1/4"	8-5/8"	24#	" 1250'	500 sx	Circulate
7-7/8"	4 1/2" or 5 1/2"	10.5-11.6# or 15.5-17#	" 8600'	250 sx	

We propose to drill and test the Morrow formation and intermediate zones. Approx 360' of surface casing will be set, cement will be circulated, to shut off gravel and cavings. Intermediate casing will be set 100' below the Artesian zone, cement circulated. If productive, 4 1/2" or 5 1/2" casing will be run and cemented.

Mud Program: - FW Gel & LCM to 1250', Fresh water to 5300', KCL water to 7900'. Lo fluid loss mud to TD.

BOP Program: - BOP's to be installed on Intermediate casing and tested, pipe rams daily, blind rams on trips.

APPROVAL VALID
FOR 90 DAYS UNLESS
DRILLING COMMENCED,

gas is not dedicated

IN ABOVE SPACE DESCRIBE PROPOSED PROGRAM: IF PROPOSAL IS TO DEEPEN OR PLUG BACK, GIVE DATA ON PRESENT PRODUCTIVE ZONE AND PROPOSED NEW PRODUCTIVE ZONE. GIVE BLOWOUT PREVENTER PROGRAM, IF ANY.

I hereby certify that the information above is true and complete to the best of my knowledge and belief.

Signed Christine Tomlinson Title Geol. Secty Date 12-13-78

(This space for State Use)

APPROVED BY W. A. Gressett TITLE SUPERVISOR, DISTRICT II DATE DEC 15 1978

CONDITIONS OF APPROVAL, IF ANY:

Cement must be circulated to
surface behind 13 3/8" casing

Notify N.M.O.C.C. in sufficient
time to witness cementing
the 8 5/8" casing

WELL LOCATION AND ACREAGE DEDICATION PLAT

Supersedes C-128
Effective 1-1-65

All distances must be from the outer boundaries of the Section.

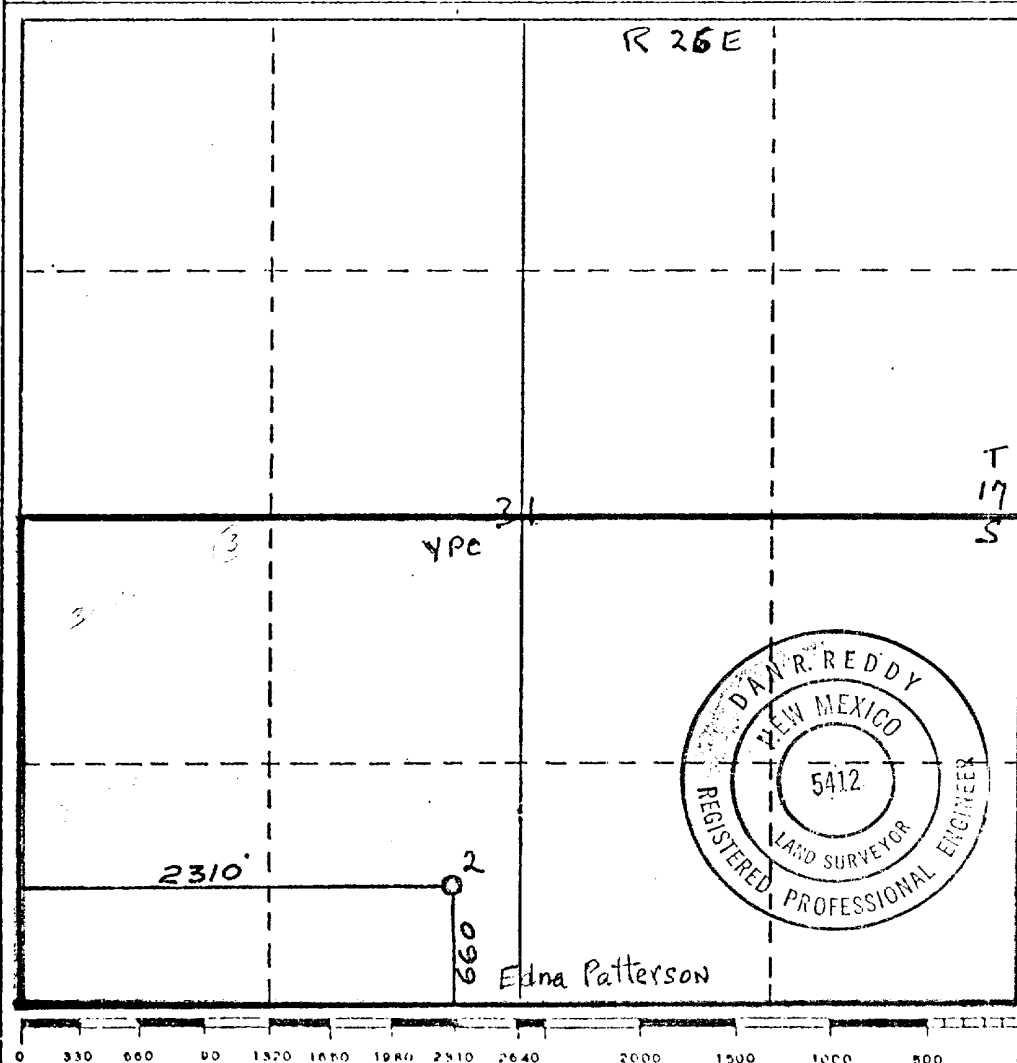
Operator YATES PETROLEUM CORPORATION			Lease Patterson EL		Well No. 2
Unit Letter N	Section 31	Township 17 South	Range 26 East	County Eddy	
Actual Postage Location of Well:					
2310 feet from the West		Line and	660 feet from the South		Line
Ground Level Elev. 3422'	Producing Formation MORROW	Pool	East EAGLE CREEK Atoka-Morrow		

- Outline the acreage dedicated to the subject well by colored pencil or hatchure marks on the plat below.
- If more than one lease is dedicated to the well, outline each and identify the ownership thereof (both as to working interest and royalty).
- If more than one lease of different ownership is dedicated to the well, have the interests of all owners been consolidated by communitization, unitization, force-pooling, etc?

☐ Yes ☐ No If answer is "yes," type of consolidation _____

If answer is "no," list the owners and tract descriptions which have actually been consolidated. (Use reverse side of this form if necessary.) _____

No allowable will be assigned to the well until all interests have been consolidated (by communitization, unitization, forced-pooling, or otherwise) or until a non-standard unit, eliminating such interests, has been approved by the Commission.



CERTIFICATION

I hereby certify that the information contained herein is true and complete to the best of my knowledge and belief.

Eddie M. Mahfood
Name

EDDIE M. MAHFOOD
Position

ENGINEER
Company

YATES PETROLEUM CORP
Date

12-13-78

I hereby certify that the well location shown on this plat was plotted from field notes of actual surveys made by me or under my supervision, and that the same is true and correct to the best of my knowledge and belief.

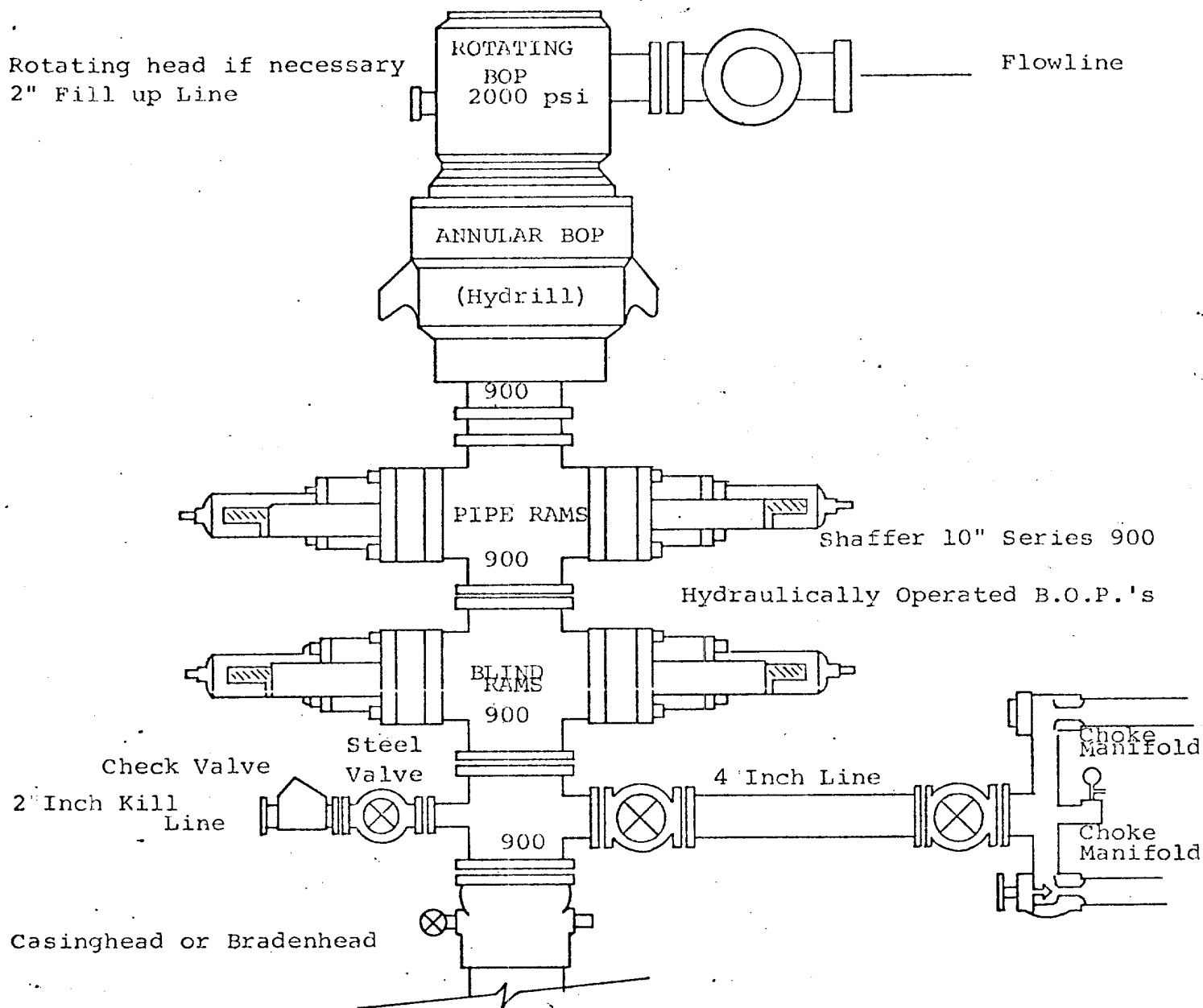
Date Surveyed

Dec. 13, 1978

Registered Professional Engineer and/or Land Surveyor

Dan R. Reddy
Certificate No.

N.M.P.E.&L.S. #5412



THE FOLLOWING CONSTITUTE MINIMUM BLOWOUT PREVENTER REQUIREMENTS

1. All preventers to be hydraulically operated with secondary manual controls installed prior to drilling out from under casing.
2. Choke outlet to be a minimum of 4" diameter.
3. Kill line to be of all steel construction of 2" minimum diameter.
4. All connections from operating manifolds to preventers to be all steel, hole or tube a minimum of one inch in diameter.
5. The available closing pressure shall be at least 15% in excess of that required with sufficient volume to operate the B.O.P.'s.
6. All connections to and from preventer to have a pressure rating equivalent to that of the B.O.P.'s.
7. Inside blowout preventer to be available on rig floor.
8. Operating controls located a safe distance from the rig floor.
9. Hole must be kept filled on trips below intermediate casing. Operator not responsible for blowouts resulting from not keeping hole full.
10. D. P. float must be installed and used below zone of first gas intrusion.