

NO. OF COPIES RECEIVED	6
DISTRIBUTION	
SANTA FE	1
FILE	1
U.S.G.S.	2
LAND OFFICE	
OPERATOR	2

NEW MEXICO RECEIVED COMMISSION

JAN 12 1979

O.C.C.
ARTESIA, OFFICE

30-015-22789
Form C-101
Revised 1-1-65

5A. Indicate Type of Lease
STATE ☐ FEE ☒

5. State Oil & Gas Lease No.

APPLICATION FOR PERMIT TO DRILL, DEEPEN, OR PLUG BACK

1a. Type of Work b. Type of Well OIL WELL <input type="checkbox"/> GAS WELL <input checked="" type="checkbox"/> OTHER <input type="checkbox"/> SINGLE ZONE <input checked="" type="checkbox"/> MULTIPLE ZONE <input type="checkbox"/>		7. Unit Agreement Name	
2. Name of Operator Yates Petroleum Corporation ✓		8. Farm or Lease Name Ingram Jackson "BV"	
3. Address of Operator 207 South Fourth Street - Artesia, NM 88210		9. Well No. 7	
4. Location of Well UNIT LETTER G LOCATED 1980 FEET FROM THE North LINE AND 1980 FEET FROM THE East LINE OF SEC. 26 TWP. 17S RGE. 25E NMPM		10. Field and Pool, or Wildcat	
11. County Eddy		12. County Eddy	
13. Proposed Depth Approx 8400'		19A. Formation Morrow	
20. Rotary or C.T. Rotary		21. Elevations (Show whether DE, RT, etc.) 3388' GR	
21A. Kind & Status Plug. Bond Blanket		21B. Drilling Contractor Landis Drilling Co.	
22. Approx. Date Work will start As soon as approved			

23.

PROPOSED CASING AND CEMENT PROGRAM

SIZE OF HOLE	SIZE OF CASING	WEIGHT PER FOOT	SETTING DEPTH	SACKS OF CEMENT	EST. TOP
17"	13-3/8"	48#	Approx 320'	200 sacks	Circulate
12-1/4"	8-5/8"	24#	" 1200'	550 sacks	Circulate
7-7/8"	5 1/2" or 4 1/2"	17-15.5# or 11.6 or 9.5#	TD	200 sacks	

Propose to drill and test the Morrow and intermediate formations. Approximately 320' of surface casing will be set to shut off surface gravel and cavings. Intermediate casing will be set 100' below the Artesian Water zone and cemented to the surface. If commercial pay is encountered, 5 1/2" or 4 1/2" casing will be run, cemented, perforated and stimulated as needed for production.

Mud Program: FW Gel & LCM to 1200', water to 6200', starch-driskpak-KCL to 7500', flosal-driskpak-KCL to TD.

BOP Program: BOP's and hydril on 8-5/8" casing and tested, APPROVAL 1118
pipe rams daily,
blind rams on trips.
FOR 90 DAYS AFTER
DRILLING COMPLETION,

Gas not dedicated.

EXPIRES 4-16-79

IN ABOVE SPACE DESCRIBE PROPOSED PROGRAM; IF PROPOSAL IS TO DEEPEN OR PLUG BACK, GIVE DATA ON PRESENT PRODUCTIVE ZONE AND PROPOSED NEW PRODUCTIVE ZONE. GIVE BLOWOUT PREVENTER PROGRAM, IF ANY.

I hereby certify that the information above is true and complete to the best of my knowledge and belief.

Signed Eddre... Title Engineer Date 1-12-79

(This space for State Use)

APPROVED BY W. A. Gressett TITLE SUPERVISOR, DISTRICT II DATE JAN 16 1979

CONDITIONS OF APPROVAL, IF ANY:

Cement must be circulated to
surface behind 13 3/8" 5 7/8" casing

Notify N.M.O.C.C. in sufficient
time to witness cementing
the 8 7/8" casing

WELL LOCATION AND ACREAGE DEDICATION PLAT

Supersedes C-128
Effective 1-1-65

All distances must be from the outer boundaries of the Section.

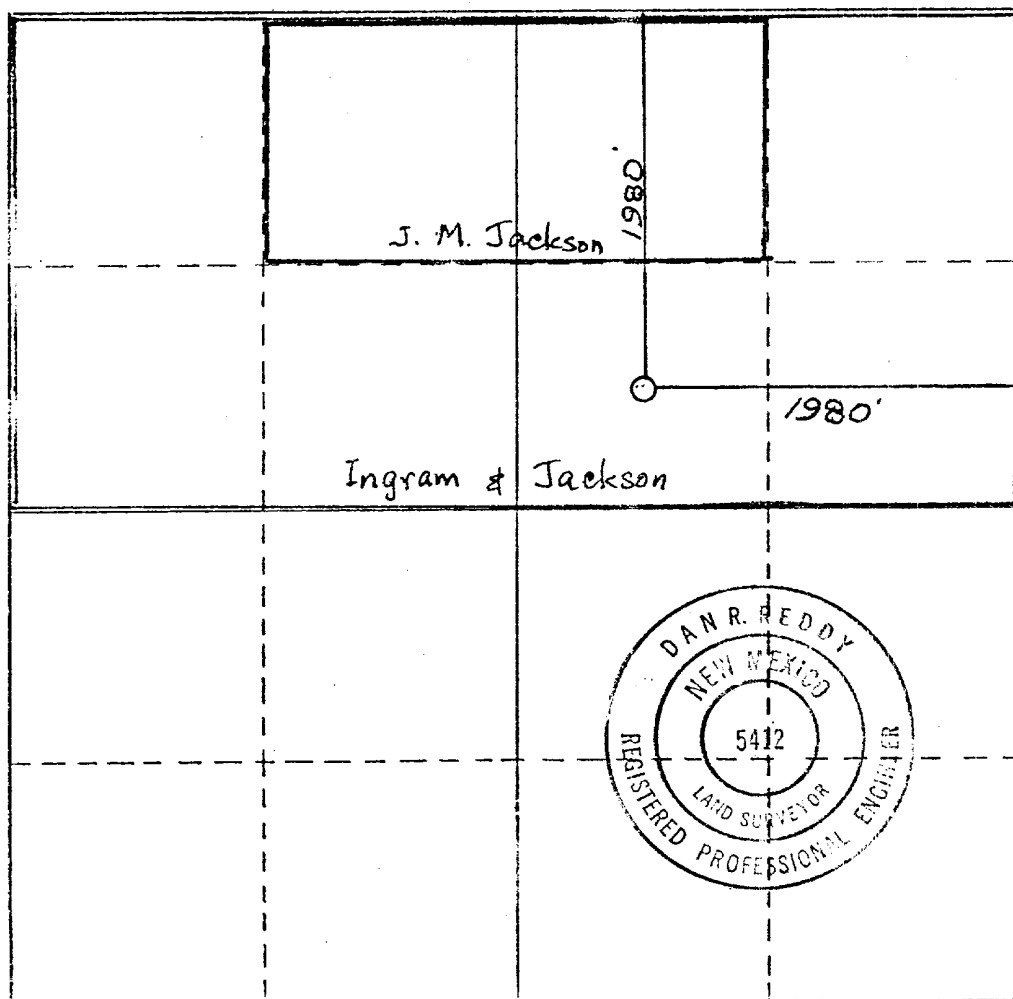
Operator WATOS PETROLEUM CORP.			Lease INGRAM JACKSON BV		Well No. 7
Unit Letter G	Section 26	Township 17S	Range 25E	County EDDY	
Actual Footage Location of Well:					
1980 feet from the North		1980 feet from the East		None	
Ground Level Elev. 3387.46	Producing Formation MORRIS	Pool & Leasehold Status UNDEVELOPED		Dedicated Acreage 320	

1. Outline the acreage dedicated to the subject well by colored pencil or hatchure marks on the plat below.
2. If more than one lease is dedicated to the well, outline each and identify the ownership thereof (both as to working interest and royalty).
3. If more than one lease of different ownership is dedicated to the well, have the interests of all owners been consolidated by communitization, unitization, force-pooling, etc?

☒ Yes ☐ No If answer is "yes," type of consolidation To be communitized

If answer is "no," list the owners and tract descriptions which have actually been consolidated. (Use reverse side of this form if necessary.)

No allowable will be assigned to the well until all interests have been consolidated (by communitization, unitization, forced-pooling, or otherwise) or until a non-standard unit, eliminating such interests, has been approved by the Commission.



CERTIFICATION

I hereby certify that the information contained herein is true and complete to the best of my knowledge and belief.

Eddie M. Mahfood

Name
Eddie M. Mahfood

Position
ENGINEER

Company
WATOS PETROLEUM CORP.

Date
1-11-79

I hereby certify that the well location shown on this plat was plotted from field notes of actual surveys made by me or under my supervision, and that the same is true and correct to the best of my knowledge and belief.

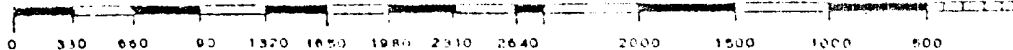
9 Jan. 1979

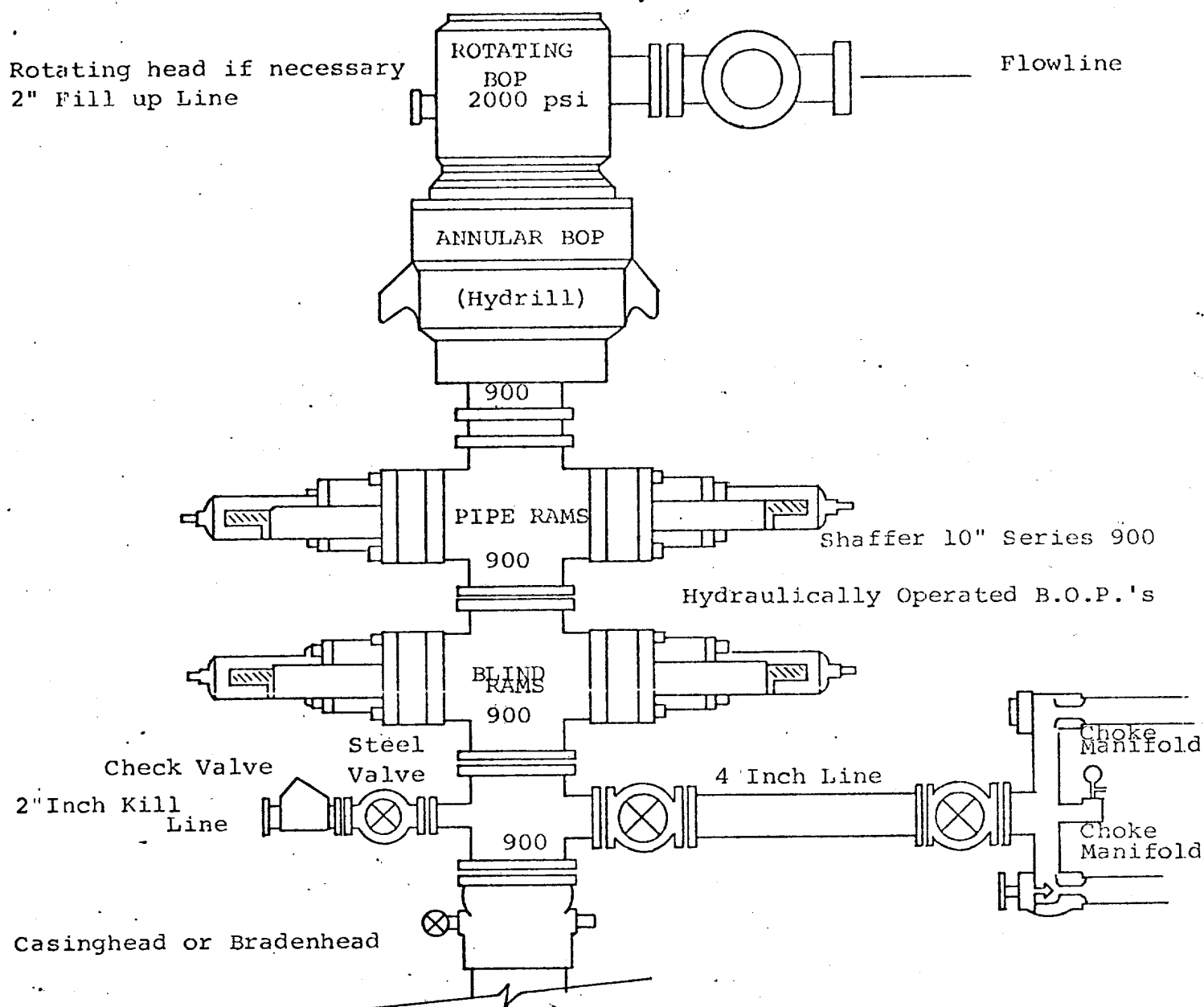
Date Surveyed

Registered Professional Engineer
and/or Land Surveyor

Dan R. Reddy
P.E., S. #5412

Surveyed and Plotted





THE FOLLOWING CONSTITUTE MINIMUM BLOWOUT PREVENTER REQUIREMENTS

1. All preventers to be hydraulically operated with secondary manual controls installed prior to drilling out from under casing.
2. Choke outlet to be a minimum of 4" diameter.
3. Kill line to be of all steel construction of 2" minimum diameter.
4. All connections from operating manifolds to preventers to be all steel, hole or tube a minimum of one inch in diameter.
5. The available closing pressure shall be at least 15% in excess of that required with sufficient volume to operate the B.O.P.'s.
6. All connections to and from preventer to have a pressure rating equivalent to that of the B.O.P.'s.
7. Inside blowout preventer to be available on rig floor.
8. Operating controls located a safe distance from the rig floor.
9. Hole must be kept filled on trips below intermediate casing. Operator not responsible for blowouts resulting from not keeping hole full.
10. D. P. float must be installed and used below zone of first gas intrusion.