

NO. OF COPIES RECEIVED	6
DISTRIBUTION	
SANTA FE	1
FILE	1
U.S.G.S.	3
LAND OFFICE	
OPERATOR	2

RECEIVED
NEW MEXICO OIL CONSERVATION COMMISSION

JAN 17 1979

O. C. C.
ARTESIA, OFFICE

30-015-22799

Form G-101
Revised 1-1-65

5A. Indicate Type of Lease
STATE <input type="checkbox"/> FEE <input checked="" type="checkbox"/>

5. State Oil & Gas Lease No.

APPLICATION FOR PERMIT TO DRILL, DEEPEN, OR PLUG BACK

1a. Type of Work		7. Unit Agreement Name	
b. Type of Well OIL WELL <input type="checkbox"/> GAS WELL <input checked="" type="checkbox"/> OTHER <input type="checkbox"/> DRILL <input checked="" type="checkbox"/> DEEPEN <input type="checkbox"/> PLUG BACK <input type="checkbox"/>		8. Farm or Lease Name Jackson "AT" Com	
2. Name of Operator Yates Petroleum Corporation ✓		9. Well No. 9	
3. Address of Operator 207 South 4th Street - Artesia, NM 88210		10. Field and Pool, or Wildcat Wildcat	
4. Location of Well UNIT LETTER M LOCATED 660 FEET FROM THE South LINE AND 660 FEET FROM THE West LINE OF SEC. 13 TWP. 17S. RGE. 25E NMPM		12. County Eddy	
21. Elevations (Show whether DF, RT, etc.) 3465' GR		19. Proposed Depth Approx 8400'	19A. Formation Morrow
21A. Kind & Status Plug. Bond Blanket	21B. Drilling Contractor Capitan Drilling Co.	22. Approx. Date Work will start As soon as approved	

23.

PROPOSED CASING AND CEMENT PROGRAM

SIZE OF HOLE	SIZE OF CASING	WEIGHT PER FOOT	SETTING DEPTH	SACKS OF CEMENT	EST. TOP
17½"	13-3/8"	48#	Approx 320'	200	Circulate
12¼"	8-5/8"	24#	" 1200'	450	Circulate
7-7/8"	5½ or 4½"	17-15.5# or 11.6-9.5#	TD	200	

Propose to drill and test the Morrow and intermediate horizons. Approximately 320' of surface casing will be run and cement circulated to shut off gravel and caving. Intermediate casing will be set 100' below the Artesian Water Zone and cement to surface. If commercial pay is encountered, will run 5½" or 4½" production casing and cement with 600' of cover, perforate and stimulate as needed.

This Non-Standard location is scheduled for hearing in Case No. 6423.

Mud Program: - FW gel & LCM to 1200', fresh water to 4000', KCL water to 6200', starch-driskpak KCL to 7200', flosal-driskpak-KCL mud to TD. MW 8.9-9.0, Vis 34-39, WL 10-7.

BOP Program: - BOP's and hydril on the 8-5/8" casing and tested, 90 days unless daily, blind rams on trips, Yellow-Jacket prior to drilling Wolfcamp. GAS NOT DEDICATED

APPROVAL VALID

EXPIRES 4-25-79

IN ABOVE SPACE DESCRIBE PROPOSED PROGRAM: IF PROPOSAL IS TO DEEPEN OR PLUG BACK, GIVE DATA ON PRESENT PRODUCTION ZONE. GIVE BLOWOUT PREVENTER PROGRAM, IF ANY.

I hereby certify that the information above is true and complete to the best of my knowledge and belief.

Signed Christine Imhensen Title Geol. Secty Date 1-16-79

(This space for State Use)

APPROVED BY W.A. Gussert TITLE SUPERVISOR, DISTRICT II DATE JAN 25 1979

CONDITIONS OF APPROVAL, IF ANY:

Subject to Case 6423 1-31-79

Notify N.M.O.C.C. in sufficient

Cement must be circulated to
surface behind 12¼" & 8½" casing

time to witness cementing
the 8½" casing

NEW MEXICO OIL CONSERVATION COMMISSION
WELL LOCATION AND ACREAGE DEDICATION AT

Form C-102
 Supersedes C-128
 Effective 1-1-65

All distances must be from the outer boundaries of the Section.

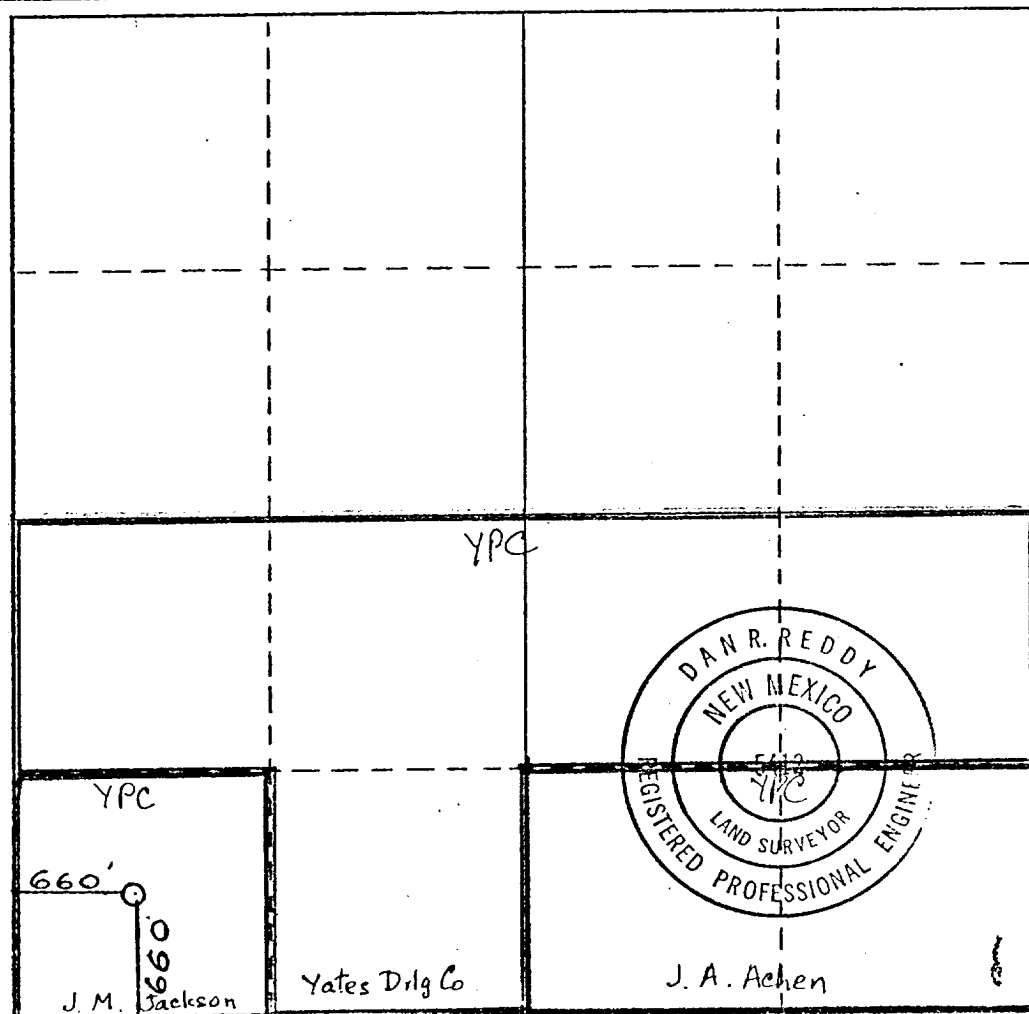
Operator YATES PETROLEUM CORPORATION			Lease Jackson AT		Well No. 9
Unit Letter M	Section 13	Township 17 South	Range 25 East	County Eddy	
Actual Footage Location of Well: 660 feet from the South line and 660 feet from the West line					
Ground Level Elev. 3464.7	Producing Formation Morrow		Pool Unders. (E. Eagle Creek)	Dedicated Acreage: 320 Acres	

1. Outline the acreage dedicated to the subject well by colored pencil or hatchure marks on the plat below.
2. If more than one lease is dedicated to the well, outline each and identify the ownership thereof (both as to working interest and royalty).
3. If more than one lease of different ownership is dedicated to the well, have the interests of all owners been consolidated by communitization, unitization, force-pooling, etc?

☒ Yes ☐ No If answer is "yes," type of consolidation **Being Communitized**

If answer is "no," list the owners and tract descriptions which have actually been consolidated. (Use reverse side of this form if necessary.) _____

No allowable will be assigned to the well until all interests have been consolidated (by communitization, unitization, forced-pooling, or otherwise) or until a non-standard unit, eliminating such interests, has been approved by the Commission.



CERTIFICATION

I hereby certify that the information contained herein is true and complete to the best of my knowledge and belief.

Eddie M. Mahfood

Name
Eddie M. MAHFOOD

Position
ENGINEER

Company
YATES PETROLEUM CORP

Date
1-16-79

I hereby certify that the well location shown on this plat was plotted from field notes of actual surveys made by me or under my supervision, and that the same is true and correct to the best of my knowledge and belief.

Date Surveyed
January 12, 1979

Registered Professional Engineer and/or Land Surveyor

Dan R. Reddy

Certificate No.
N. M. PE&LS #5412

0 330 660 990 1320 1650 1980 2310 2640 2970 3300 3630 0

