

6

DISTRIBUTION		
SANTA FE	1	
FILE	1	✓
U.S.G.S.	2	
LAND OFFICE	1	
OPERATOR	1	

NEW MEXICO OIL CONSERVATION COMMISSION

JAN 30 1979

O. C. C.
ALBUQUERQUE, NEW MEXICO

30-015-22813

Form C-101
Revised 1-1-65

5A. Indicate Type of Lease
STATE ☒ FEDERAL ☐

5. State Oil & Gas Lease No.

B-1969

APPLICATION FOR PERMIT TO DRILL, DEEPEN, OR PLUG BACK

1. Type of Work

a. Type of Well

DRILL ☒

DEEPEN ☐

PLUG BACK ☐

OTHER ☐

SINGLE ZONE ☐

MULTIPLE ZONE ☐

7. Unit Agreement Name

8. Type of Lease (Date)

State B 1969 Jr. 1

9. Well No.

10

10. Field and Pool, or Without

East Empire Yates 7-R

12. County

Eddy

Collier, Collier ✓

Box 796 Artesia, New Mexico 88210

SECTION 0 LOCATED 330 FEET FROM THE South LINE

2310 FEET FROM THE East LINE OF SEC. 22 TWP. 17s RGE. 28e

19. Proposed Depth	19A. Formation	20. Rotary or C.T.
800'	Seven Rivers	Rotary
21. Elevation (from whether D.T., R.T., etc.)	21A. Kind & Status Plug. Bond	21B. Drilling Contractor
3590.5	Statewide	Yucca Drilling Co.
		22. Approx. Date Work will start
		Feb. 5, 1979

PROPOSED CASING AND CEMENT PROGRAM

SIZE OF HOLE	SIZE OF CASING	WEIGHT PER FOOT	SETTING DEPTH	SACKS OF CEMENT	EST. TOP
7 7/8"	4 1/2"	9 1/2#	800'	250 Sxs.	Surface

Feb. 5, 1979

Plan to drill Seven Rivers Well using 7 7/8" bit and reach T-D. approx. 800' using air rig.

Feb. 6, 1979

Plan to run 800' of 4 1/2", 9 1/2# casing and circulate with 250 Sxs. class " " to surface.

APPROVAL VALID
FOR 30 DAYS UNLESS
DRILLING COMMENCED,
EXPIRES 5-7-79

IN ABOVE SPACE DESCRIBE PROPOSED PROGRAM: IF PROPOSAL IS TO DEEPEN OR PLUG BACK, GIVE DATA ON PRESENT PRODUCTIVE ZONE AND PROPOSED NEW PRODUCTIVE ZONE. GIVE BLOWOUT PREVENTER PROGRAM, IF ANY.

I hereby certify that the information above is true and complete to the best of my knowledge and belief.

Signed _____ Title Agent Date 1/29/79

(This space for State Use)

APPROVED BY W. A. Gussert TITLE SUPERVISOR, DISTRICT II DATE FEB 7 1979

CONDITIONS OF APPROVAL, IF ANY:

Cement must be circulated to
surface behind 4 1/2" casing

Notify N.M.O.C.C. in sufficient
time to witness cementing
the 4 1/2" casing

NEW MEXICO OIL CONSERVATION COMMISSION
WELL LOCATION AND ACREAGE DEDICATION PLAT

Form C-102
Supersedes C-128
Effective 1-1-65

All distances must be from the outer boundaries of the Section.

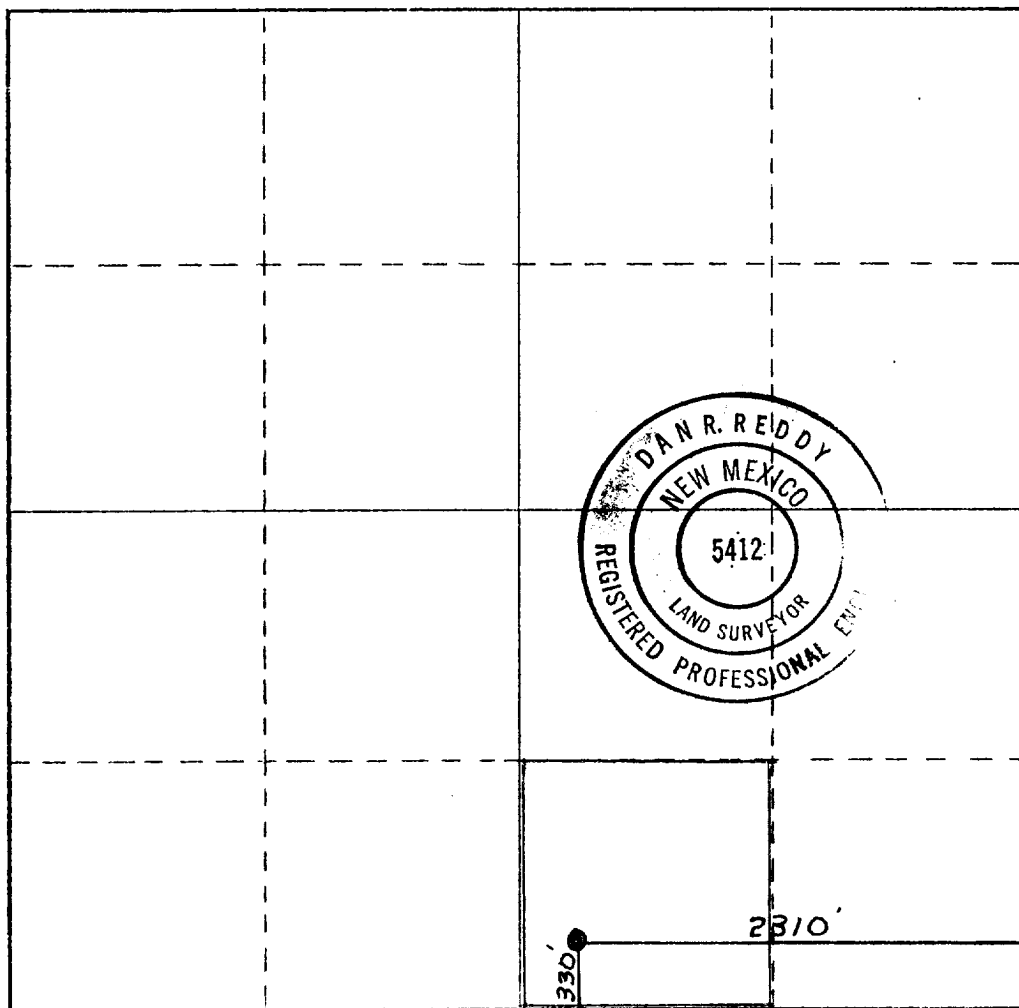
Operator Collier & Collier			Lease <u>State 8 1969 Jr. 1</u> Chico		Well No. 10
Unit Letter O	Section 22	Township 17 South	Range 28 East	County Eddy	
Actual Footage Location of Well:					
330 feet from the South line and		2310 feet from the East line			
Ground Level Elev. 3590.5	Producing Formation East Empire Yates 7-R		Pool Seven Rivers	Dedicated Acreage: 40 Acres	

1. Outline the acreage dedicated to the subject well by colored pencil or hatchure marks on the plat below.
2. If more than one lease is dedicated to the well, outline each and identify the ownership thereof (both as to working interest and royalty).
3. If more than one lease of different ownership is dedicated to the well, have the interests of all owners been consolidated by communitization, unitization, force-pooling, etc?

☐ Yes ☐ No If answer is "yes," type of consolidation _____

If answer is "no," list the owners and tract descriptions which have actually been consolidated. (Use reverse side of this form if necessary.) _____

No allowable will be assigned to the well until all interests have been consolidated (by communitization, unitization, forced-pooling, or otherwise) or until a non-standard unit, eliminating such interests, has been approved by the Commission.



CERTIFICATION

I hereby certify that the information contained herein is true and complete to the best of my knowledge and belief.

Name Maria Siquentes
 Position Agent
 Company Collier & Collier
 Date 1/29/79

I hereby certify that the well location shown on this plat was plotted from field notes of actual surveys made by me or under my supervision, and that the same is true and correct to the best of my knowledge and belief.

Date Surveyed Jan. 26, 1979
 Registered Professional Engineer and/or Land Surveyor

Dan R. Reddy
 Certificate No. NM PE&LS #5412

