

NO. OF COPIES RECEIVED	6
DISTRIBUTION	
SANTA FE	1
FILE	1
U.S.G.S.	2
LAND OFFICE	1
OPERATOR	1

NEW MEXICO OIL CONSERVATION COMMISSION

RECEIVED

FEB 6 1979

O. C. C.

ARTESIA, OFFICE

30-015-22818

Form C-101
Revised 1-1-65

5A. Indicate Type of Lease	
STATE <input checked="" type="checkbox"/>	FEE <input type="checkbox"/>
5. State Oil & Gas Lease No.	
647-368	647-320
7. Unit Agreement Name	
Empire Abo Pressure Maintenance Project	
8. Farm or Lease Name	
Empire Abo Unit "E"	
9. Well No.	
392	
10. Field and Pool, or Wildcat	
X Empire Abo	
12. County	
Eddy	
19. Proposed Depth	19A. Formation
6300'	Abo Reef
20. Rotary or C.T.	
Rotary	
21. Elevations (Show whether DE, RT, etc.)	21A. Kind & Status Plug. Bond
3685.5' GR	GCA #8
21B. Drilling Contractor	22. Approx. Date Work will start
Hondo Drlg Co.	2/20/79

APPLICATION FOR PERMIT TO DRILL, DEEPEN, OR PLUG BACK

1a. Type of Work

b. Type of Well
 OIL WELL ☒ GAS WELL ☐ OTHER ☐
 DRILL ☒ DEEPEN ☐ PLUG BACK ☐
 SINGLE ZONE ☐ MULTIPLE ZONE ☐

2. Name of Operator

Atlantic Richfield Company ✓

3. Address of Operator

P. O. Box 1710, Hobbs, New Mexico 88240

4. Location of Well

UNIT LETTER B LOCATED 959 FEET FROM THE North LINE
 AND 2400 FEET FROM THE East LINE OF SEC. 35 TWP. 17S RGE. 28E NMPM

12. County
 Eddy

19. Proposed Depth
 6300'

19A. Formation
 Abo Reef

20. Rotary or C.T.
 Rotary

21. Elevations (Show whether DE, RT, etc.)
 3685.5' GR

21A. Kind & Status Plug. Bond
 GCA #8

21B. Drilling Contractor
 Hondo Drlg Co.

22. Approx. Date Work will start
 2/20/79

23. PROPOSED CASING AND CEMENT PROGRAM

SIZE OF HOLE	SIZE OF CASING	WEIGHT PER FOOT	SETTING DEPTH	SACKS OF CEMENT	EST. TOP
11"	8-5/8" OD	24# K-55	750'	450	Circ to surf
7-7/8"	5-1/2" OD	15.5# K-55	6300'	1425	Circ to surf
					by 2-staging

Propose to drill a development well in the Empire Abo Pressure Maintenance Project to more economically recover remaining reserves.

Authority to drill above non-standard location by approval of ~~Administrative Order NGL 999~~.
 Directional drilling of this well approved by Order No. R-5906.

Blowout Preventer Program attached.

APPROVAL VALID
 FOR 90 DAYS UNLESS
 DRILLING COMMENCED,

EXPIRES 5-8-79

IN ABOVE SPACE DESCRIBE PROPOSED PROGRAM: IF PROPOSAL IS TO DEEPEN OR PLUG BACK, GIVE DATA ON PRESENT PRODUCTIVE ZONE AND PROPOSED NEW PRODUCTIVE ZONE. GIVE BLOWOUT PREVENTER PROGRAM, IF ANY.

I hereby certify that the information above is true and complete to the best of my knowledge and belief.

Signed [Signature] Title Dist. Drlg Supt. Date 2/2/79

(This space for State Use)

APPROVED BY [Signature] TITLE SUPERVISOR, DISTRICT II DATE FEB 8 1979

CONDITIONS OF APPROVAL, IF ANY:

**MEXICO OIL CONSERVATION COMMISSION
WELL LOCATION AND ACREAGE DEDICATION PLAT**

Form C-102
Supersedes C-128
Effective 1-1-65

All distances must be from the outer boundaries of the Section

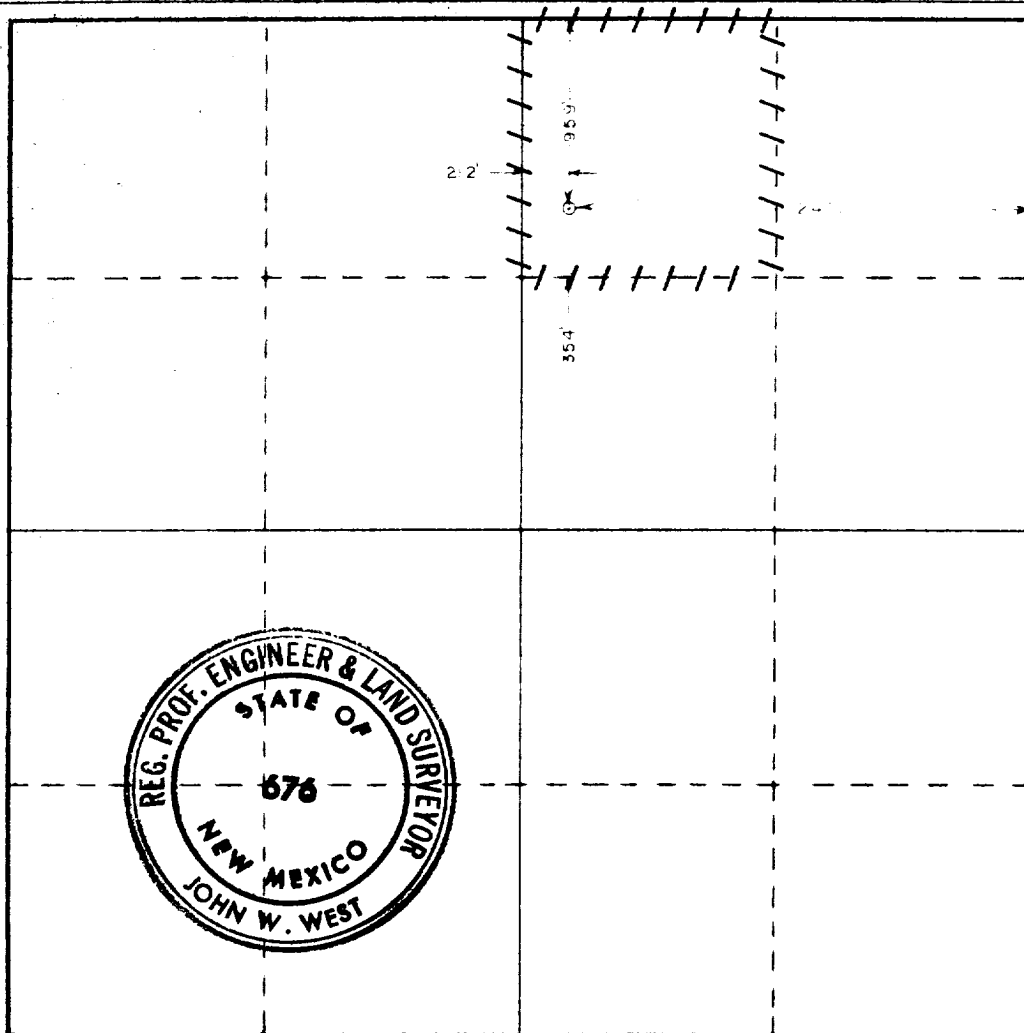
Operator Atlantic Richfield Co.			Lease Empire Abo Unit		Well No. 392
Unit Letter B	Section 35	Township 17-S	Range 28-E	County Eddy	
Actual Footage Location of Well: 959 feet from the North line and 2400 feet from the East line					
Ground Level Elev. 3685.5	Producing Formation Abo Reef		Pool Empire Abo		Dedicated Acreage: 40 Acres

1. Outline the acreage dedicated to the subject well by colored pencil or hatchure marks on the plat below.
2. If more than one lease is dedicated to the well, outline each and identify the ownership thereof (both as to working interest and royalty).
3. If more than one lease of different ownership is dedicated to the well, have the interests of all owners been consolidated by communitization, unitization, force-pooling, etc?

☒ Yes ☐ No If answer is "yes," type of consolidation Unitization

If answer is "no," list the owners and tract descriptions which have actually been consolidated. (Use reverse side of this form if necessary.) _____

No allowable will be assigned to the well until all interests have been consolidated (by communitization, unitization, forced-pooling, or otherwise) or until a non-standard unit, eliminating such interests, has been approved by the Commission.



CERTIFICATION

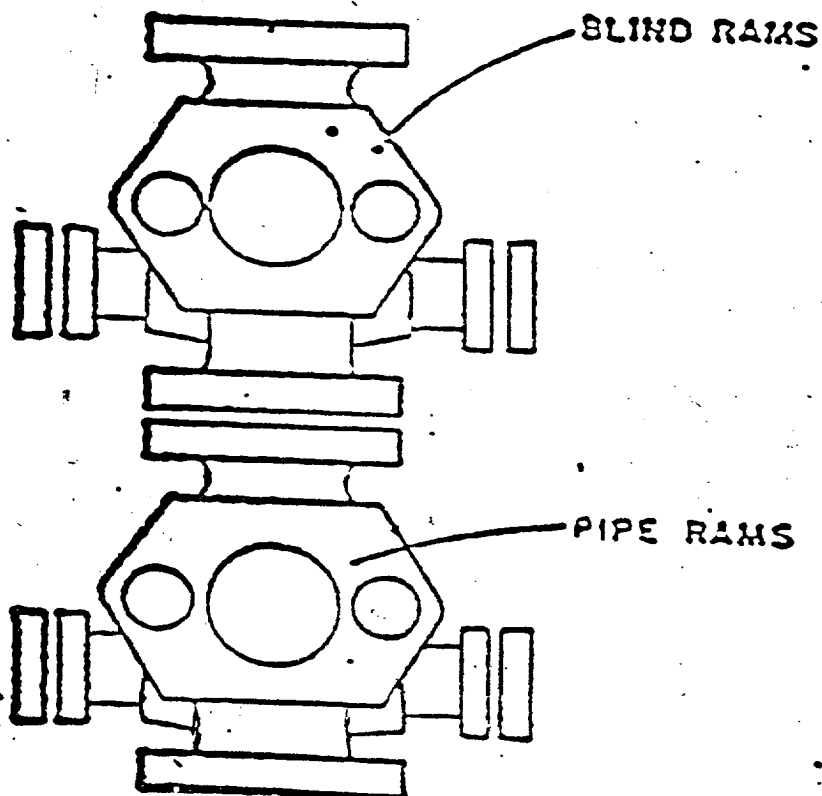
I hereby certify that the information contained herein is true and complete to the best of my knowledge and belief.

Name *John W. West*
 Position Dist. Drlg. Supt.
 Company Atlantic Richfield Company
 Date 2/2/79

I hereby certify that the well location shown on this plat was plotted from field notes of actual surveys made by me or under my supervision, and that the same is true and correct to the best of my knowledge and belief.

Date Surveyed
October 27, 1978
 Registered Professional Engineer and/or Land Surveyor

John W. West
 Certificate No. **John W. West 676**
Ronald J. Eidson 3239



ATLANTIC RICHFIELD COMPANY
Blow Out Preventer Program

Lease Name Empire Abo Unit "E"

Well No. 392

Location 959' FNL & 2400' FEL
Sec 35-17S-28E, Eddy County

BOP to be tested before installed on well and will be maintained in good working condition during drilling. All wellhead fittings to be of sufficient pressure to operate in a safe manner.

IT IS THEREFORE ORDERED:

Case # 6409 12-20-78 D.S.N.
Order R-5906 1-16-79

(1) That the applicant, Atlantic Richfield Company, is hereby authorized to directional drill four wells on the Empire Unit Area, Empire-Abo Pool, Eddy County, New Mexico, bottoming them at unorthodox locations as follows:

In Township 17 South, Range 28 East:

~~Well No. D-361, surface location 136 feet from the South line and 800 feet from the East line of Section 27, bottom-hole location 300 feet from the North line and 300 feet from the East line of Section 34 in Unit A;~~

~~Well No. E-392, surface location 959 feet from the North line and 2400 feet from the East line, bottom-hole location 600 feet from the North line and 2500 feet from the East line, Section 35 in Unit C.~~

In Township 18 South, Range 27 East:

~~Well No. K-131, surface location 1500 feet from the South line and 600 feet from the West line, bottom-hole location 1600 feet from the South line and 250 feet from the West line, Section 2 in Unit B; and~~

~~Well No. L-133, surface location 800 feet from the South line and 950 feet from the West line, bottom-hole location 1250 feet from the South line and 700 feet from the West line, Section 2 in Unit K.~~

(2) That all of the above wells would be bottomed at unorthodox locations within 150 feet of the described bottom-hole locations.

PROVIDED HOWEVER, that subsequent to the above-described directional drilling, should any of said wells be a multi-shot continuous multi-shot directional survey shall be run in the wellbore from total depth to the surface with shot points not more than 100 feet apart; that the operator shall cause the surveying company to forward a copy of the survey report directly to the Santa Fe office of the Division, Box 2080, Santa Fe, New Mexico, and that the operator shall notify the Division's Artesia District Office of the date and time said survey is to be commenced.

(3) That Form C-105 shall be filed in accordance with Division Rule 1105 and the operator shall indicate thereon true vertical depths in addition to measured depths.