

NO. OF COPIES RECEIVED	5
DISTRIBUTION	
SANTA FE	1
FILE	1
U.S.G.S.	2
LAND OFFICE	1
OPERATOR	1

MEXICO OIL CONSERVATION COMMISSION

RECEIVED

FEB 6 1979

30-015-22821  
Form C-101  
Revised 1-1-65

5A. Indicate Type of Lease	
STATE <input checked="" type="checkbox"/>	FEE <input type="checkbox"/>
5. State Oil & Gas Lease No.	
647-349	647-351
7. Unit Agreement Name	
Empire Abo Pressure Maintenance Project	
8. Farm or Lease Name	
Empire Abo Unit "G"	
9. Well No.	
315	
10. Field and Pool, or Wildcat	
Empire Abo	
12. County	
Eddy	
19. Proposed Depth	19A. Formation
6370	Abo Reef
20. Rotary or C.T.	
Rotary	
21. Elevations (Show whether DT, RT, etc.)	21A. Kind & Status Plug. Bond
3662.6' GR	GCA #8
21B. Drilling Contractor	22. Approx. Date Work will start
Hondo Drlg. Co.	3/1/79

APPLICATION FOR PERMIT TO DRILL, DEEPEN OR PLUG BACK

1a. Type of Work

b. Type of Well

DRILL ☒ DEEPEN ☐ PLUG BACK ☐

OIL WELL ☒ GAS WELL ☐ OTHER ☐ SINGLE ZONE ☐ MULTIPLE ZONE ☐

2. Name of Operator

Atlantic Richfield Company ✓

3. Address of Operator

P. O. Box 1710, Hobbs, New Mexico 88240

4. Location of Well

UNIT LETTER J LOCATED 1900 FEET FROM THE South LINE

AND 1450 FEET FROM THE East LINE OF SEC. 33 TWP. 17S RGE. 28E NMPM

19. Proposed Depth

6370

19A. Formation

Abo Reef

20. Rotary or C.T.

Rotary

21. Elevations (Show whether DT, RT, etc.)

3662.6' GR

21A. Kind & Status Plug. Bond

GCA #8

21B. Drilling Contractor

Hondo Drlg. Co.

22. Approx. Date Work will start

3/1/79

23. PROPOSED CASING AND CEMENT PROGRAM					
SIZE OF HOLE	SIZE OF CASING	WEIGHT PER FOOT	SETTING DEPTH	SACKS OF CEMENT	EST. TOP
11"	8-5/8" OD	24# K-55	750'	450	Circ to surf
7-7/8"	5-1/2" OD	15.5# K-55	6370'	1425	Circ to surf
					by 2-staging

Propose to drill a development well in the Empire Abo Pressure Maintenance Project to more economically recover remaining reserves.

Authority to drill above non-standard location by approval of Administrative Order NSL-999. ✓

Blowout Preventer Program attached.

APPROVAL VALID  
FOR 90 DAYS UNLESS  
DRILLING COMMENCES

EXPIRES 5-8-79

IN ABOVE SPACE DESCRIBE PROPOSED PROGRAM: IF PROPOSAL IS TO DEEPEN OR PLUG BACK, GIVE DATA ON PRESENT PRODUCTIVE ZONE AND PROPOSED NEW PRODUCTIVE ZONE. GIVE BLOWOUT PREVENTER PROGRAM, IF ANY.

I hereby certify that the information above is true and complete to the best of my knowledge and belief.

Signed [Signature] Title Dist. Drlg Supt. Date 2/2/79

(This space for State Use)

APPROVED BY W. A. Gressett TITLE SUPERVISOR, DISTRICT II DATE FEB 8 1979

CONDITIONS OF APPROVAL, IF ANY:

NEW MEXICO OIL CONSERVATION COMMISSION  
WELL LOCATION AND ACREAGE DEDICATION PLAT

Form C-102  
Supersedes C-128  
Effective 1-1-65

All distances must be from the outer boundaries of the Section

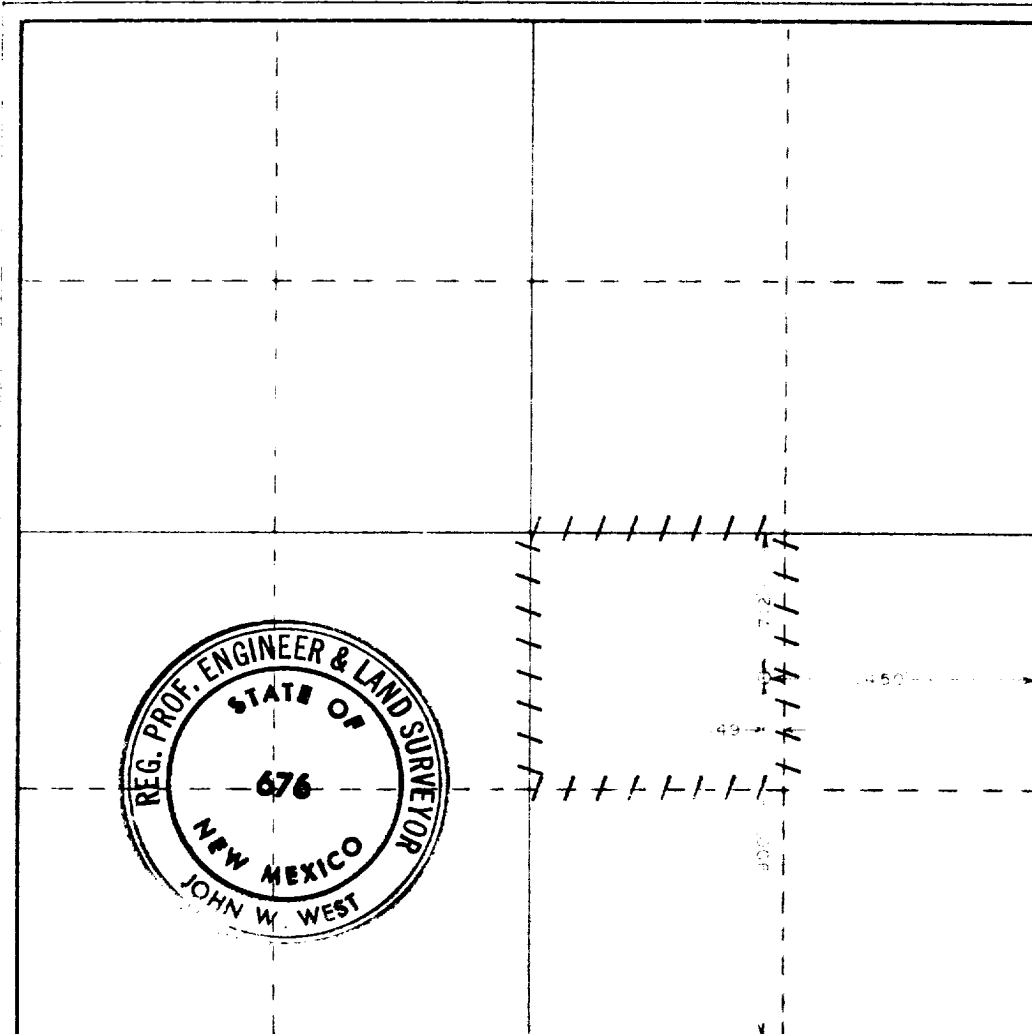
Operator <b>Atlantic Richfield Co.</b>			Lease <b>Empire Abo Unit</b>		Well No. <b>315</b>
Section <b>J</b>	Section <b>33</b>	Township <b>17-S</b>	Range <b>28-E</b>	County <b>Eddy</b>	
Actual Portage Location of Well:					
1900 feet from the South line and		1450 feet from the East line			
Ground Level Elev. <b>3662.6</b>	Producing Formation <b>Abo Reef</b>	Pool <b>Empire Abo</b>		Dedicated Acreage: <b>40</b> Acres	

- 1 Outline the acreage dedicated to the subject well by colored pencil or hachure marks on the plat below.
- 2 If more than one lease is dedicated to the well, outline each and identify the ownership thereof (both as to working interest and royalty).
- 3 If more than one lease of different ownership is dedicated to the well, have the interests of all owners been consolidated by communitization, unitization, force-pooling, etc?

☒ Yes ☐ No If answer is "yes," type of consolidation Unitization

If answer is "no," list the owners and tract descriptions which have actually been consolidated. (Use reverse side of this form if necessary.)

No allowable will be assigned to the well until all interests have been consolidated (by communitization, unitization, forced-pooling, or otherwise) or until a non-standard unit, eliminating such interests, has been approved by the Commission.



CERTIFICATION

I hereby certify that the information contained herein is true and complete to the best of my knowledge and belief.

Name John W. West

Position  
**Dist. Drlg. Supt.**

Company  
**Atlantic Richfield Company**

Date  
**2/2/79**

I hereby certify that the well location shown on this plat was plotted from field notes of actual surveys made by me or under my supervision, and that the same is true and correct to the best of my knowledge and belief.

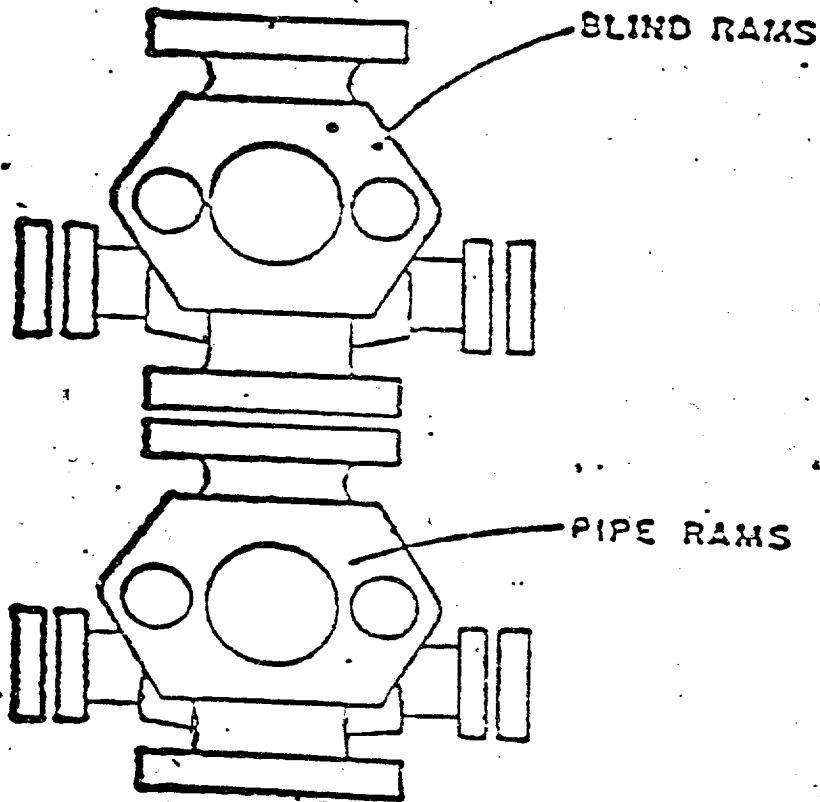
Date Surveyed  
**October 25, 1978**

Registered Professional Engineer and/or Land Surveyor

John W. West

Certificate No. **John W. West 676**  
**Ronald J. Eidson 3239**

330 660 990 1320 1650 1980 2310 2640 2970 3300 3630 3960 4290 4620 4950 5280 5610 5940 6270 6600 6930 7260 7590 7920 8250 8580 8910 9240 9570 9900



**ATLANTIC RICHFIELD COMPANY**  
**Blow Out Preventer Program**

**Lease Name** Empire Abo Unit "G"

**Well No.** 315

**Location** 1900' FSL & 1450' FEL  
Sec 33-17S-28E, Eddy County

**BOP to be tested before installed on well and will be maintained in good working condition during drilling. All wellhead fittings to be of sufficient pressure to operate in a safe manner.**