

District I
Box 1980, Hobbs, NM 88241-1980
District II
811 S. 1st Street, Artesia, NM 88210-2834
District III
1000 Rio Brazos Rd., Aztec, NM 87410
District IV
2040 South Pacheco, Santa Fe, NM 87505

State of New Mexico
Energy, Minerals & Natural Resources Department

OIL CONSERVATION DIVISION
2040 South Pacheco
Santa Fe, NM 87505

Form C-101
Revised October 18, 199
Instructions on back
Submit to Appropriate District Office
State Lease - 6 Copies
Fee Lease - 5 Copies



☒ AMENDED REPORT

APPLICATION FOR PERMIT TO DRILL, RE-ENTER, ~~DEEPEN~~ PLUG BACK, OR ADD A ZONE

¹ Operator name and Address ARCO PERMIAN P.O. BOX 1610 MIDLAND, TX 79702		² OGRID Number 000990
⁴ Property Code 22954		³ API Number 30-0 15-22821
⁵ Property Name WASHINGTON "33" STATE		⁶ Well No. 17

⁷ Surface Location

UL or lot no.	Section	Township	Range	Lot. Idn	Feet from the	North/South Line	Feet from the	East/West line	County
J	33	17S	28E		1900	SOUTH	1450	EAST	EDDY

⁸ Proposed Bottom Hole Location If Different From Surface

UL or lot no.	Section	Township	Range	Lot. Idn	Feet from the	North/South Line	Feet from the	East/West line	County
⁹ Proposed Pool 1 ARTESIA (GLORIETA-YESO) 96830					¹⁰ Proposed Pool 2 ARTESIA (Q-G-SA) 3230				

¹¹ Work Type Code P	¹² Well Type Code O	¹³ Cable/Rotary R	¹⁴ Lease Type Code S	¹⁵ Ground Level Elevation 3663'
¹⁶ Multiple NO	¹⁷ Proposed Depth 4200	¹⁸ Formation YESO	¹⁹ Contractor	²⁰ Spud Date 7/98

²¹ Proposed Casing and Cement Program

Hole Size	Casing Size	Casing weight/foot	Setting Depth	Sacks of Cement	Estimated TOC
11	8-5/8	24#	751'	400	SURF
7-7/8	5-1/2	15.5	6370	1900	SURF

²² Describe the proposed program. If this application is to DEEPEN or PLUG BACK give the data on the present productive zone and proposed new productive zone. Describe the blowout prevention program, if any. Use additional sheets if necessary.

ORIGINALLY DRILLED AND COMPLETED AS THE EMPIRE ABO UNIT G-315 IN 1979. TD @ 6370'. TESTED ABO 5794'-6280'. PROPOSED TO ABANDON THE ABO AND TEST THE GLORIETA-YESO OR THE QUEEN-GRAYBURG-SAN ANDRES. SET CIBP @ 5750' W/35' CEMENT ON TOP. RUN CNL GAMMA FAY-CCL AND PERF AS INDICATED BY LOG. TEST AND FRAC AS NEEDED.

²³ I hereby certify that the information given above is true and complete to the best of my knowledge and belief.

Signature: *Elizabeth A. Casbeer*

Printed name: ELIZABETH A. CASBEER

Title: REG./COMP. ANALYST

OIL CONSERVATION DIVISION

Approved by:

Title:

Approval Date:

Expiration Date:

DISTRICT I

P.O. Box 4880, Hobbs, NM 88241-1980

State of New Mexico

Energy, Minerals and Natural Resources Depart

Form C-102

Revised February 10, 1994

Submit to Appropriate District Office

State Lease - 4 Copies

Fee Lease - 3 Copies

DISTRICT II

P.O. Drawer DD, Artesia, NM 88211-0719

DISTRICT III

1000 Rio Brazos Rd., Aztec, NM 87410

DISTRICT IV

P.O. BOX 2088, SANTA FE, N.M. 87504-2088

OIL CONSERVATION DIVISION

P.O. Box 2088

Santa Fe, New Mexico 87504-2088

AMENDED REPORT

WELL LOCATION AND ACREAGE DEDICATION PLAT

API Number 30-015-22921	Pool Code	Pool Name Artesia (Glorieta-Yeso) or Artesia (Q-G-SA)
Property Code 22954	Property Name WASHINGTON 33 STATE	Well Number 17
OGRID No. 000990	Operator Name ARCO PERMIAN	Elevation 3663

Surface Location

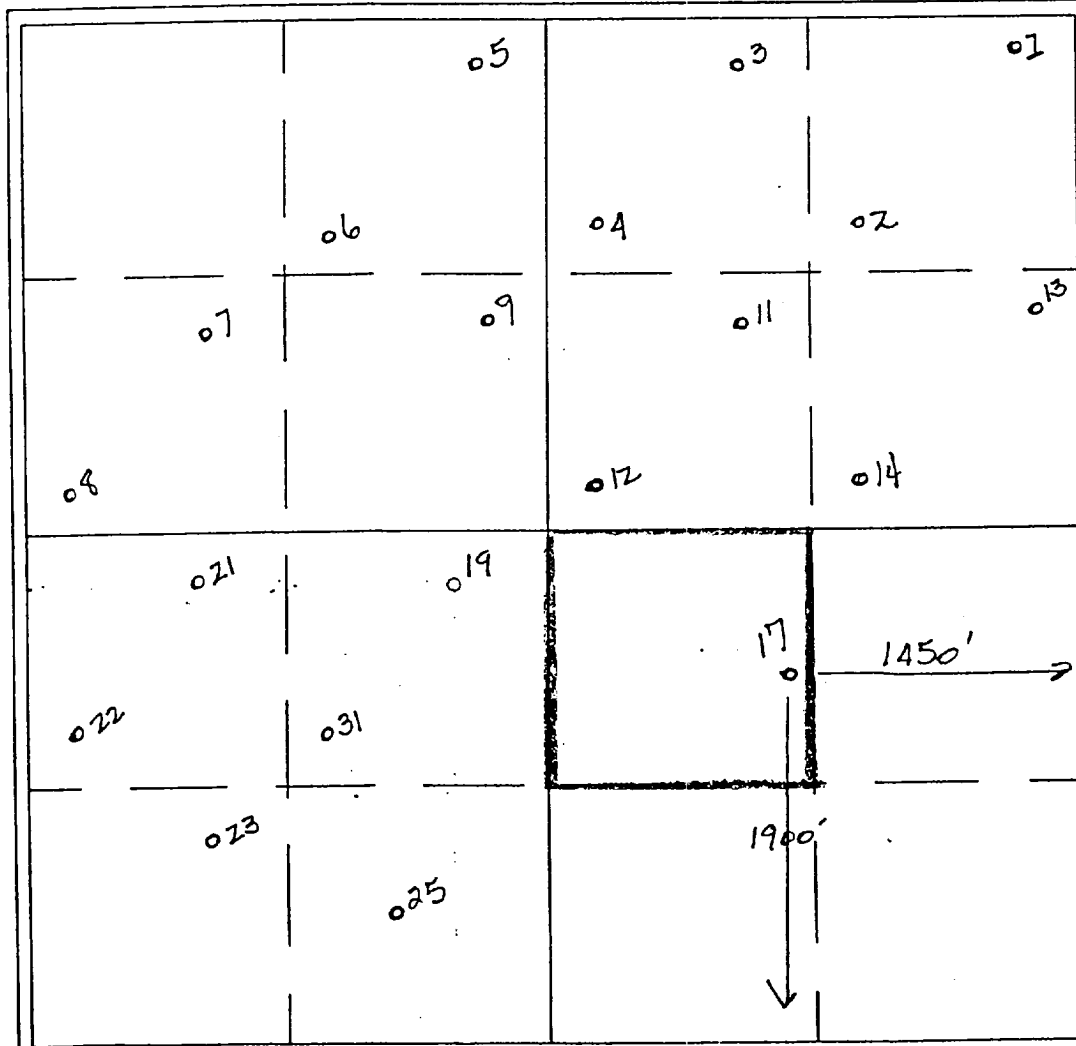
UL or lot No.	Section	Township	Range	Lot Idn	Feet from the	North/South line	Feet from the	East/West line	County
J	33	17 S	28 E		1900	SOUTH	1450	EAST	EDDY

Bottom Hole Location If Different From Surface

UL or lot No.	Section	Township	Range	Lot Idn	Feet from the	North/South line	Feet from the	East/West line	County

Dedicated Acres 40	Joint or Infill	Consolidation Code	Order No.
-----------------------	-----------------	--------------------	-----------

NO ALLOWABLE WILL BE ASSIGNED TO THIS COMPLETION UNTIL ALL INTERESTS HAVE BEEN CONSOLIDATED
OR A NON-STANDARD UNIT HAS BEEN APPROVED BY THE DIVISION



OPERATOR CERTIFICATION

I hereby certify the the information
contained herein is true and complete to the
best of my knowledge and belief.

Elizabeth A. Casbeer
Signature
ELIZABETH A. CASBEER
Printed Name
RES. / COMP.
Title
5/20/98
Date

SURVEYOR CERTIFICATION

I hereby certify that the well location shown
on this plat was plotted from field notes of
actual surveys made by me or under my
supervision, and that the same is true and
correct to the best of my belief.

MARCH 3, 1998

Date Surveyed
Signature of Surveyor
Professional Surveyor
NEW MEXICO
3239
5-4-98
88-1-032
Cert. No. RONALD J. EDSON 3239
12641
PROFESSIONAL SURVEYOR-McDONALD 12185