

NEW MEXICO OIL CONSERVATION COMMISSION
WELL LOCATION AND ACREAGE DEDICATION PLAT

Form C-102
Supersedes C-128
Effective 1-1-65

All distances must be from the outer boundaries of the Section.

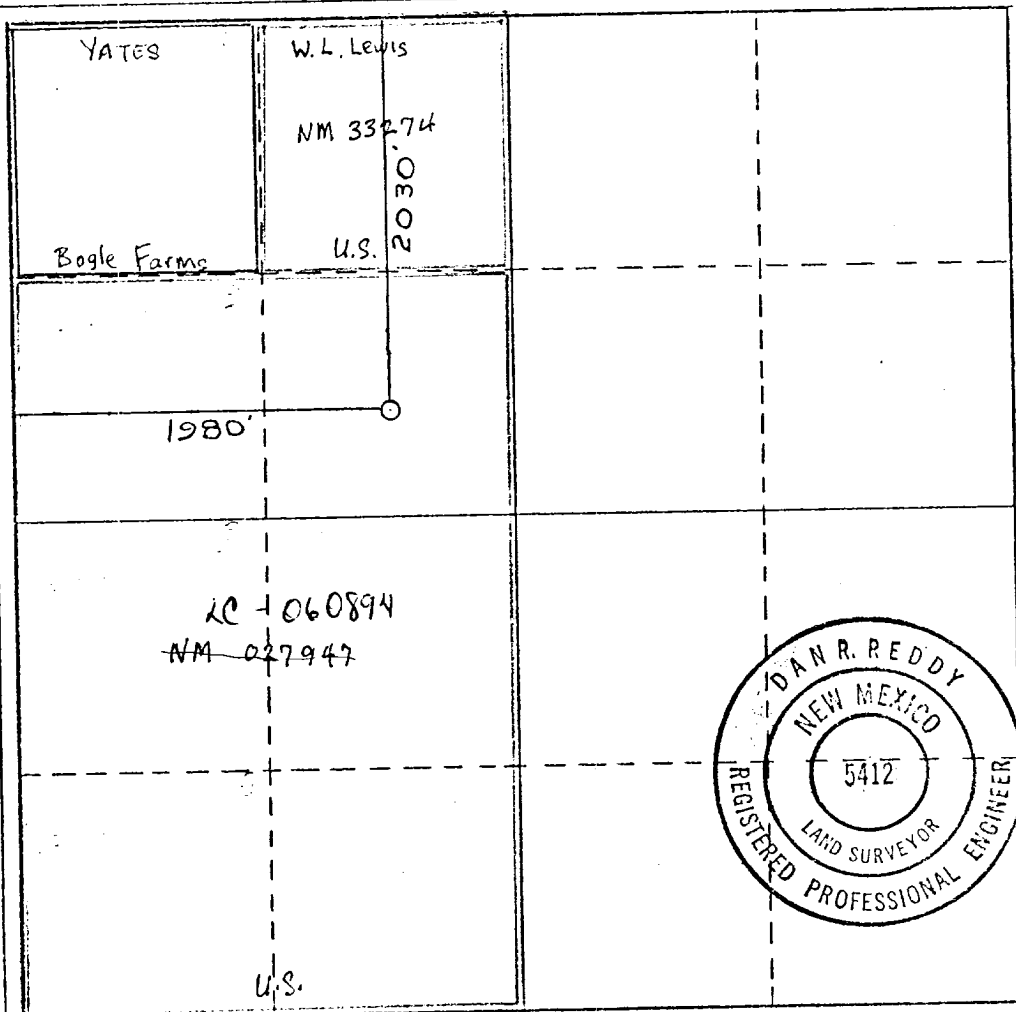
Operator YATES PETROLEUM CORPORATION			Lease Exxon KU Fed. Com.		Well No. 1
Unit Letter F	Section 31	Township 17 South	Range 27 East	County Eddy	
Actual Postage Location of Well: 2030 feet from the North line and 1980 feet from the West line					
Ground Level Elev. 3312.2	Producing Formation MORROW		Pool Undes.	Dedicated Acreage: 320 Acres	

1. Outline the acreage dedicated to the subject well by colored pencil or hachure marks on the plat.
2. If more than one lease is dedicated to the well, outline each and identify the ownership thereof (such as to working interest and royalty).
3. If more than one lease of different ownership is dedicated to the well, have the interests therein been consolidated by communitization, unitization, force-pooling, etc?

☒ Yes ☐ No If answer is "yes," type of consolidation To be communitized

If answer is "no," list the owners and tract descriptions which have actually been consolidated. (Use reverse side of this form if necessary.)

No allowable will be assigned to the well until all interests have been consolidated (by communitization, unitization, forced-pooling, or otherwise) or until a non-standard unit, eliminating such interests, has been approved by the Commission.



CERTIFICATION

I hereby certify that the information contained herein is true and complete to the best of my knowledge and belief.

Eddie M. Mahfood

Name
EDDIE M. MAHFOOD

Position
ENGINEER

Company
YATES PETROLEUM CORP

Date
3-7-79

I hereby certify that the well location shown on this plat was plotted from field notes of actual surveys made by me or under my supervision, and that the same is true and correct to the best of my knowledge and belief.

Date Surveyed
March 3, 1979

Registered Professional Engineer and Land Surveyor

Dan R. Reddy

Certificate No.
New Mexico PE&LS #5412

0 330 660 990 1320 1650 1980 2310 2640 2970 3300 3630 3960 4290 4620 4950 5280 5610 5940 6270 6600