

STATE OF NEW MEXICO  
ENERGY AND MINERALS DEPARTMENT

OIL CONSERVATION DIVISION

P. O. BOX 2088

SANTA FE, NEW MEXICO 87501

ON RECEIVED BY

SEP 07 1984

Form C-102  
Revised 10-1-78

All distances must be from the outer boundaries of the Section.

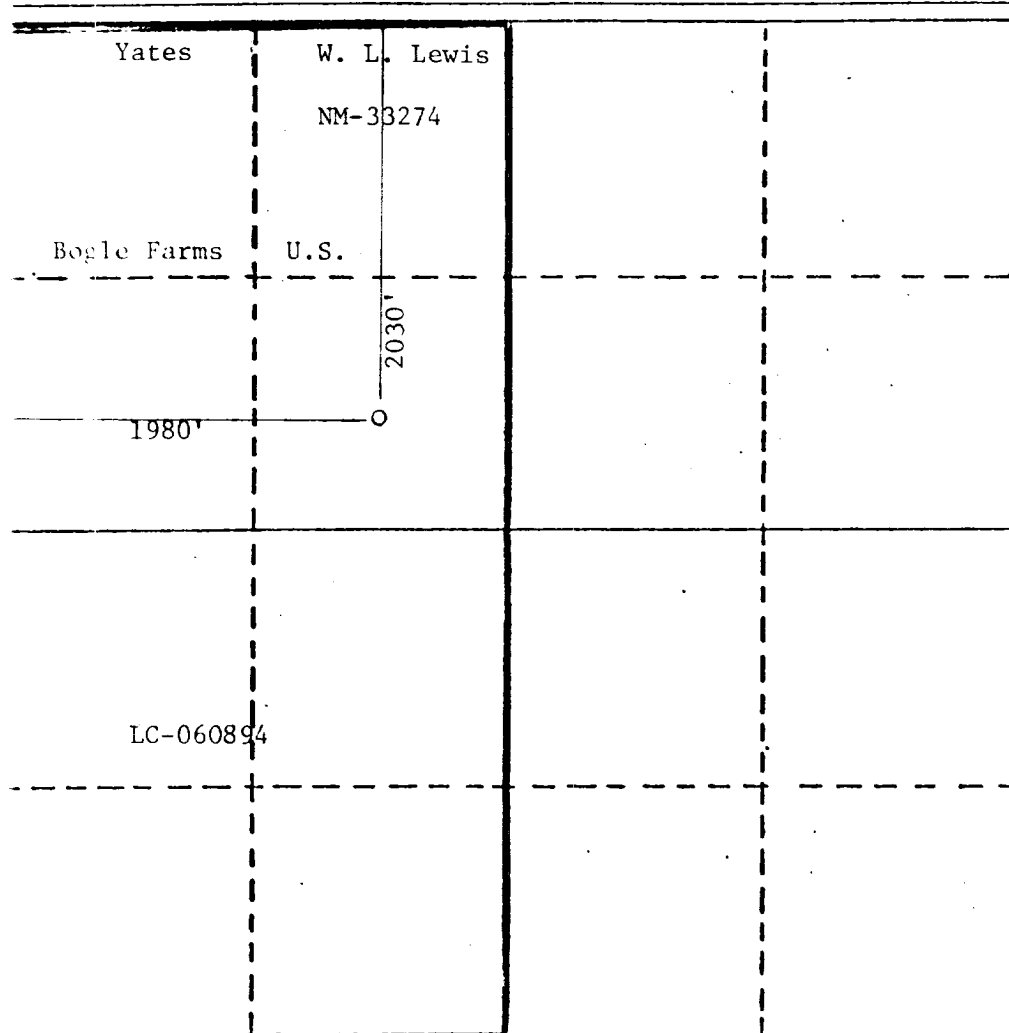
Operator Yates Petroleum Corporation		Lease Exxon KU Federal		O. C. D. Com ARTESIA, OFFICE		Well No. 1	
Well Letter F	Section 31	Township 17 South	Range 27 East	County Eddy			
Actual Footage Location of Well: 2030 feet from the North line and 1980 feet from the West line							
Ground Level Elev. 3312.2'	Producing Formation Canyon		Pool Undes.		Dedicated Acreage: 320 Acres		

1. Outline the acreage dedicated to the subject well by colored pencil or hachure marks on the plat below.
2. If more than one lease is dedicated to the well, outline each and identify the ownership thereof (both as to working interest and royalty).
3. If more than one lease of different ownership is dedicated to the well, have the interests of all owners been consolidated by communitization, unitization, force-pooling, etc?

☒ Yes ☐ No If answer is "yes," type of consolidation Communitization

If answer is "no," list the owners and tract descriptions which have actually been consolidated. (Use reverse side of this form if necessary.)

No allowable will be assigned to the well until all interests have been consolidated (by communitization, unitization, forced-pooling, or otherwise) or until a non-standard unit, eliminating such interests, has been approved by the Division.



CERTIFICATION

I hereby certify that the information contained herein is true and complete to the best of my knowledge and belief.

*Juanita Goodlett*  
Name  
Juanita Goodlett  
Position  
Production Supervisor  
Company  
Yates Petroleum Corporation  
Date  
9-6-84

I hereby certify that the well location shown on this plat was plotted from field notes of actual surveys made by me or under my supervision, and that the same is true and correct to the best of my knowledge and belief.

Refer to original plat  
Date Surveyed dated 3/3/79

Registered Professional Engineer  
and/or Land Surveyor

Certificate No.

330 660 990 1320 1650 1980 2310 2640 2970 3300 3630 3960 4290 4620 4950 5280 5610 5940 6270 6600