

| | |
|------------------------|---|
| NO. OF COPIES RECEIVED | 6 |
| DISTRIBUTION | |
| SANTA FE | 1 |
| FILE | 1 |
| U.S.G.S. | 2 |
| LAND OFFICE | 1 |
| OPERATOR | 1 |

RECEIVED
 NEW MEXICO OIL CONSERVATION COMMISSION
APR 20 1979
O. C. C.
ARTESIA, OFFICE

30-015-22907
 Form C-101
 Revised 1-1-65

| |
|--|
| 5A. Indicate Type of Lease STATE <input checked="" type="checkbox"/> FEE <input type="checkbox"/> |
| 5. State Oil & Gas Lease No. 2029 |
| 7. Unit Agreement Name |
| 8. Farm or Lease Name Schneider |
| 9. Well No. 1 |
| 10. Field and Pool, or Wildcat X Red Lake (Q.G.S.A.) |
| 12. County Eddy |
| 19. Proposed Depth 1900' |
| 19A. Formation Grayburg |
| 20. Rotary or C.T. Rotary |
| 21. Elevations (Show whether DF, RT, etc.) 3489.97 GR |
| 21A. Kind & Status Plug. Bond One well plug. bond |
| 21B. Drilling Contractor Artesia Fishing Tool Co. |
| 22. Approx. Date Work will start May 10, 1979 |

APPLICATION FOR PERMIT TO DRILL, DEEPEN, OR PLUG BACK

| | | | |
|---|--|---|--|
| 1a. Type of Work b. Type of Well OIL WELL <input checked="" type="checkbox"/> GAS WELL <input type="checkbox"/> OTHER <input type="checkbox"/> DEEPEN <input type="checkbox"/> PLUG BACK <input type="checkbox"/> SINGLE ZONE <input type="checkbox"/> MULTIPLE ZONE <input type="checkbox"/> | 2. Name of Operator H & S Oil Company ✓ | 3. Address of Operator 216 American Home Bldg. - Artesia, New Mexico 88210 | 4. Location of Well UNIT LETTER J LOCATED 1980 FEET FROM THE South LINE AND 1980 FEET FROM THE East LINE OF SEC. 24 TWP. 17 S RGE. 27 E NMPM |
| 23. | | | |

PROPOSED CASING AND CEMENT PROGRAM

| SIZE OF HOLE | SIZE OF CASING | WEIGHT PER FOOT | SETTING DEPTH | SACKS OF CEMENT | EST. TOP |
|--------------|----------------|-----------------|---------------|-------------------------------|----------|
| 11" | 8 5/8" | 20# | 460' | 125 sks. circulate to surface | |
| 7 7/8" | 5 1/2" | 14# | 1900' | 150 ska. | 1000' |

Estimated formation tops: Seven Rivers 420', Queen 990', Grayburg 1370', Drilling fluid will be water with small amounts of mud additive from 1600' to assist in sample clarity. Well will be logged open hole with Gamma Ray Neutron. No abnormal pressures or hazards have been encountered in this field.

APPROVAL AND
 FOR 90 DAYS UNLESS
 (DRILLING COMMENCED)
 EXPIRES **7-27-79**

IN ABOVE SPACE DESCRIBE PROPOSED PROGRAM: IF PROPOSAL IS TO DEEPEN OR PLUG BACK, GIVE DATA ON PRESENT PRODUCTIVE ZONE AND PROPOSED NEW PRODUCTIVE ZONE. GIVE BLOWOUT PREVENTER PROGRAM, IF ANY.

I hereby certify that the information above is true and complete to the best of my knowledge and belief.
 Signed R. L. Hensch Title Partner Date April 19, 1979

(This space for State Use)

APPROVED BY W. A. Gressett TITLE SUPERVISOR, DISTRICT II DATE APR 27 1979

CONDITIONS OF APPROVAL, IF ANY:
 Cement must be circulated to surface behind 8 7/8" casing
 Notify N.M.O.C.C. in sufficient time to witness cementing the 8 7/8" casing

**N MEXICO OIL CONSERVATION COMMISSION
WELL LOCATION AND ACREAGE DEDICATION PLAT**

Form C-102
Supersedes C-128
Effective 1-1-65

All distances must be from the outer boundaries of the Section

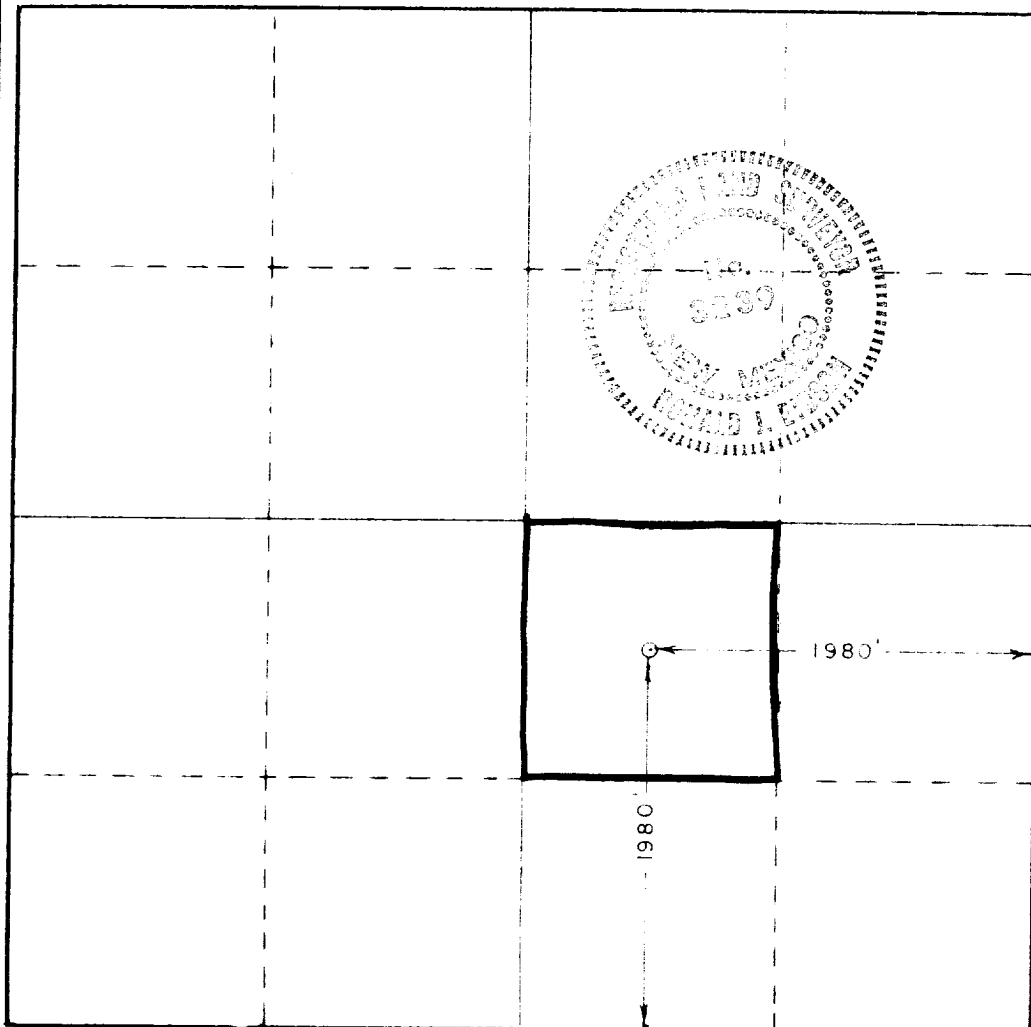
| | | | | | | | | |
|---|----------------------|-----------------------------|---------------------------|-----------------------|--|----------------------|--|--|
| Operator H. & S. Oil Co. | | | Lease Schneider | | | Well No. 1 | | |
| Section J | Section 24 | Township 17 South | Range 27 East | County Eddy | | | | |
| Acreage Location of Well: 1980 feet from the South line and 1980 feet from the East line Ground Level Elev. 3489.97 Producing Formation Queen - Grayburg Pool Red Lake Dedicated Acreage 40 Acres | | | | | | | | |

1. Outline the acreage dedicated to the subject well by colored pencil or hatchure marks on the plat below.
2. If more than one lease is dedicated to the well, outline each and identify the ownership thereof (both as to working interest and royalty).
3. If more than one lease of different ownership is dedicated to the well, have the interests of all owners been consolidated by communitization, unitization, force-pooling, etc?

☐ Yes ☐ No If answer is "yes," type of consolidation _____

If answer is "no," list the owners and tract descriptions which have actually been consolidated (Use reverse side of this form if necessary) _____

No allowable will be assigned to the well until all interests have been consolidated (by communitization, unitization, forced-pooling, or otherwise) or until a non-standard unit, eliminating such interests, has been approved by the Commission.



CERTIFICATION

I hereby certify that the information contained herein is true and complete to the best of my knowledge and belief.

R. L. Hernach
Position _____

Partner

H & S OIL COMPANY

Date **April 17, 1979**

I hereby certify that the well location shown on this plat was plotted from field notes of actual surveys made by me or under my supervision and that the same is true and correct to the best of my knowledge and belief.

Date Surveyed _____

April 13, 1979

Registered Professional Engineer and/or Land Surveyor

Ronald J. Eidson
Certificate No. **John W. West 676**
Ronald J. Eidson 3239

