

NO. OF COPIES RECEIVED	6
DISTRIBUTION	
SANTA FE	1
FILE	1 ✓
U.S.G.S.	2
LAND OFFICE	1
OPERATOR	1

**RECEIVED**  
NEW MEXICO OIL CONSERVATION COMMISSION

**JUN 27 1979**

**O. C. C.**  
**ARTESIA, OFFICE**

*30-015-22949*

Form C-101  
Revised 1-1-65

5A. Indicate Type of Lease STATE <input checked="" type="checkbox"/> FEE <input type="checkbox"/>
5. State Oil & Gas Lease No. B-2071
7. Unit Agreement Name
8. Farm or Lease Name NG Phillips State
9. Well No. 22
10. Field and Pool, or Wildcat East Empire Yates SR
12. County Eddy
19. Proposed Depth 1000'
19A. Formation Seven Rivers
20. Rotary or C.T. CT
21. Elevations (Show whether D.P., R.T., etc.) .3663
21A. Kind & Status Plug Bond Statewide Active
21B. Drilling Contractor Davis Drilling Co.
22. Approx. Date Work will start 6/27/79

**APPLICATION FOR PERMIT TO DRILL, DEEPEN, OR PLUG BACK**

1a. Type of Work  
DRILL ☒ DEEPEN ☐ PLUG BACK ☐

b. Type of Well  
OIL WELL ☐ GAS WELL ☐ OTHER ☐ SINGLE ZONE ☐ MULTIPLE ZONE ☐

2. Name of Operator  
Marbob Energy Corp. ✓

3. Address of Operator  
Box 304, Artesia, N.M. 88210

4. Location of Well  
UNIT LETTER P LOCATED 390 FEET FROM THE South LINE  
AND 978.7 FEET FROM THE East LINE OF SEC. 27 TWP. 17S RGE. 28E NMPM

21. Elevations (Show whether D.P., R.T., etc.)  
.3663

21A. Kind & Status Plug Bond  
Statewide Active

21B. Drilling Contractor  
Davis Drilling Co.

22. Approx. Date Work will start  
6/27/79

**23. PROPOSED CASING AND CEMENT PROGRAM**

SIZE OF HOLE	SIZE OF CASING	WEIGHT PER FOOT	SETTING DEPTH	SACKS OF CEMENT	EST. TOP
10"	7"	20#	500'		Surface
6½"	4½"	10#	1000'	225 sax	Surface

We propose to drill to approximately 200' and run 8 5/8" casing, cement w/50 sax cement. If cement does not circulate, will finish filling up w/ready mix, drill on to 525' and set 7" casing, drill on to TD and run 4½" casing, pull 7", circulate cement on 4½" casing. In the event of a water flow, cable tools will be moved off and reverse unit moved on and will rotary on to TD.

APPROVAL VALID  
FOR 90 DAYS UNLESS  
DRILLING COMMENCED,  
**EXPIRES 9-28-79**

IN ABOVE SPACE DESCRIBE PROPOSED PROGRAM: IF PROPOSAL IS TO DEEPEN OR PLUG BACK, GIVE DATA ON PRESENT PRODUCTIVE ZONE AND PROPOSED NEW PRODUCTIVE ZONE. GIVE BLOWOUT PREVENTER PROGRAM, IF ANY.

I hereby certify that the information above is true and complete to the best of my knowledge and belief.

Signed Cecilia Oris Title Agent Date 6/26/79  
(This space for State Use)

APPROVED BY W.A. Gressett TITLE SUPERVISOR, DISTRICT II DATE JUN 28 1979  
CONDITIONS OF APPROVAL, IF ANY:  
Notify this office immediately if water flow is encountered  
Notify N.M.O.C.C. in sufficient time to witness cementing the 8 5/8" + 4 1/2" casing

N. MEXICO OIL CONSERVATION COMMISSION  
WELL LOCATION AND ACREAGE DEDICATION PLAT

Form C-102  
Supersedes C-128  
Effective 1-1-65

All distances must be from the outer boundaries of the Section.

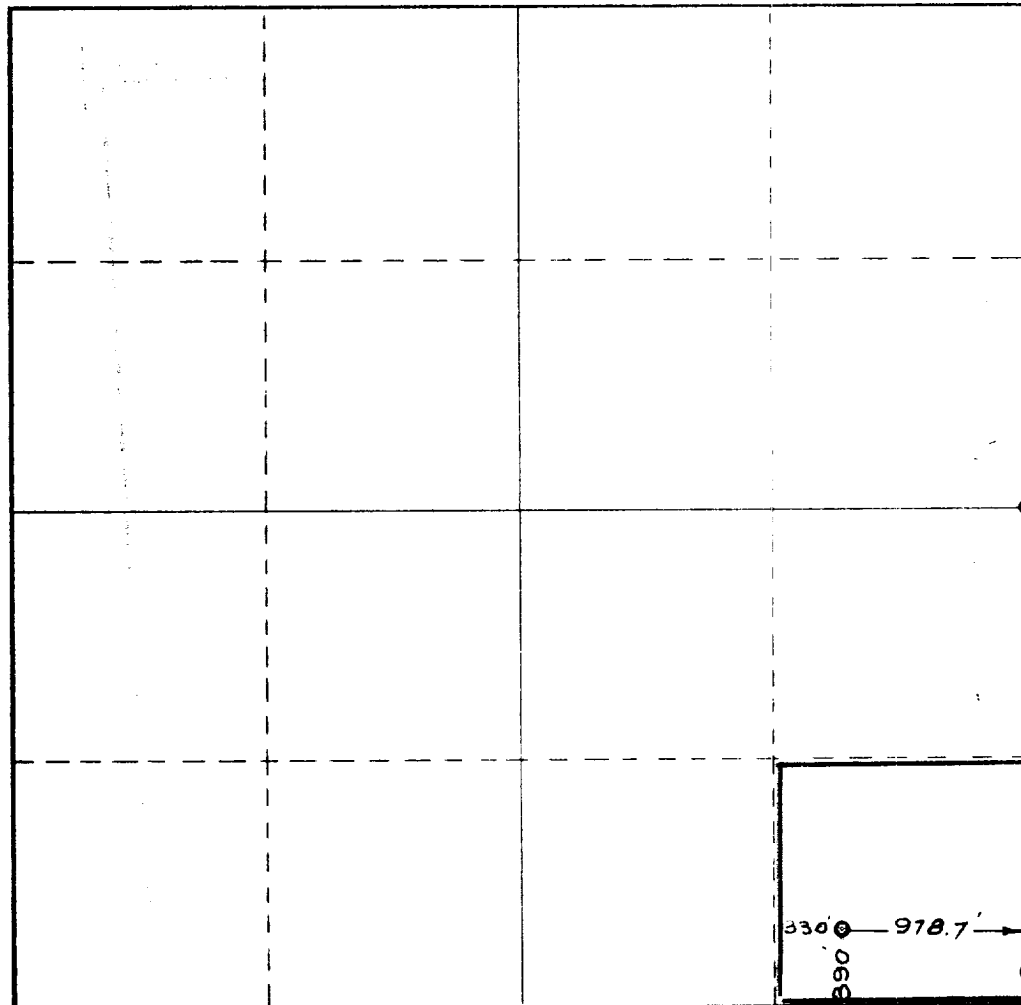
Operator <b>MARBOB ENERGY CORPORATION</b>		Lease <b>N. G. PHILLIPS, STATE OF <del>NEW MEX.</del></b>		Well No. <b>22</b>
Unit Letter <b>P</b>	Section <b>27</b>	Township <b>17 South</b>	Range <b>28 East</b>	County <b>EDDY</b>
Actual Footage Location of Well: <b>390</b> feet from the <b>South</b> line and <b>978.7</b> feet from the <b>East</b> line				
Ground Level Elev. <b>3663</b>	Producing Formation <b>Seven Rivers</b>	Pool <b>East Empire Yates</b>	Dedicated Acreage: <b>40</b> Acres	

1. Outline the acreage dedicated to the subject well by colored pencil or hachure marks on the plat below.
2. If more than one lease is dedicated to the well, outline each and identify the ownership thereof (both as to working interest and royalty).
3. If more than one lease of different ownership is dedicated to the well, have the interests of all owners been consolidated by communitization, unitization, force-pooling, etc?

☐ Yes ☐ No If answer is "yes," type of consolidation \_\_\_\_\_

If answer is "no," list the owners and tract descriptions which have actually been consolidated. (Use reverse side of this form if necessary.) \_\_\_\_\_

No allowable will be assigned to the well until all interests have been consolidated (by communitization, unitization, forced-pooling, or otherwise) or until a non-standard unit, eliminating such interests, has been approved by the Commission.



CERTIFICATION

I hereby certify that the information contained herein is true and complete to the best of my knowledge and belief.

Name  
*Norothy Hammond*  
Position  
**Gen. Mgr.**

Company  
**Marbob Energy Corporation**

Date  
**6/6/79**

I hereby certify that the well location shown on this plat was plotted from field notes of actual surveys made by me or under my supervision, and that the same is true and correct to the best of my knowledge and belief.

Date Surveyed  
**May 31 & June 1, 1979**

Registered Professional Engineer  
and/or Land Surveyor

*Oliver W. Shearn*  
Certificate No.

**1559**

0 330 660 990 1320 1650 1980 2310 2640 2000 1500 1000 500 0