

NO. OF COPIES RECEIVED	6
DISTRIBUTION	
SANTA FE	1
FILE	1 ✓
U.S.G.S.	2
LAND OFFICE	1
OPERATOR	1

NEW MEXICO OIL CONSERVATION COMMISSION

NOV 21 1980

O. C. D.  
ARTESIA, OFFICE

30-015-22969

Form C-101  
Revised 1-1-65

5A. Indicate Type of Lease  
STATE ☒ FEE ☐

5. State Oil & Gas Lease No.  
B-4575

7. Unit Agreement Name

8. Term or Lease Name  
State

9. Well No.  
5

10. Field and Pool, or Wharfed  
Empire Yates SR, East

17. County  
Eddy

APPLICATION FOR PERMIT TO DRILL, DEEPEN, OR PLUG BACK

a. Type of Work

DRILL ☒

DEEPEN ☐

PLUG BACK ☐

b. Type of Well

OIL WELL ☒

GAS WELL ☐

OTHER

SINGLE ZONE ☒

MULTIPLE ZONE ☐

3. Name of Operator

Marbob Energy Corporation ✓

3. Address of Operator

P.O. Box 304, Artesia, N.M. 88210

1. Location of Well

UNIT LETTER P LOCATED 330 FEET FROM THE South LINE

AND 550 FEET FROM THE East LINE OF SEC. 28 TWP. 17S RGE. 28E NMPM

19. Proposed Depth 820'	19A. Formation Seven Rivers	20. Rotary or C.T. Rotary
21. Elevations (Show whether D.F., R.L., etc.) 3676' GR	21A. Kind & Status Plug. Bond Statewide active	21B. Drilling Contractor Yucca Drilling Co.
		22. Approx. Date Work will start 11/24/80

23.

PROPOSED CASING AND CEMENT PROGRAM

SIZE OF HOLE	SIZE OF CASING	WEIGHT PER FOOT	SETTING DEPTH	SACKS OF CEMENT	EST. TOP
11"	8 5/8"	24#	80'	1 1/2 yds rdy mix	
7 7/8"	4 1/2"	10.50#	820'	175 sax	

We propose to drill to approximately 820' with air and soap to test the Seven Rivers formation. We will run 80' of 8 5/8" 24# casing, dump 1 1/2 yds. ready mix w/ 1/2" gravel down back side of casing. Will drill on to 820' and run 4 1/2" 10.50# casing and circulate cement.

APPROVAL VAND  
FOR 90 DAYS UNLESS  
DRILLING COMMENCED,  
EXPIRES 2-24-81

IN ABOVE SPACE DESCRIBE PROPOSED PROGRAM: IF PROPOSAL IS TO DEEPEN OR PLUG BACK, GIVE DATA ON PRESENT PRODUCTIVE ZONE AND PROPOSED NEW PRODUCTIVE ZONE. GIVE BLOWOUT PREVENTER PROGRAM, IF ANY.

I hereby certify that the information above is true and complete to the best of my knowledge and belief.

Signed Carolyn Orris Title Production Clerk Date 11/20/80

(This space for State Use)

APPROVED BY W.A. Gressett TITLE SUPERVISOR, DISTRICT II DATE NOV 24 1980

CONDITIONS OF APPROVAL, IF ANY:

Cement must be circulated to  
surface behind 8 5/8" 24# casing

Notify N.M.O.C.C. in sufficient  
time to witness cementing  
the 4 1/2" casing

NEW MEXICO OIL CONSERVATION COMMISSION  
WELL LOCATION AND ACREAGE DEDICATION PLAT

Form O-102  
Supersedes O-128  
Effective 1-1-85

All distances must be from the outer boundaries of the Section

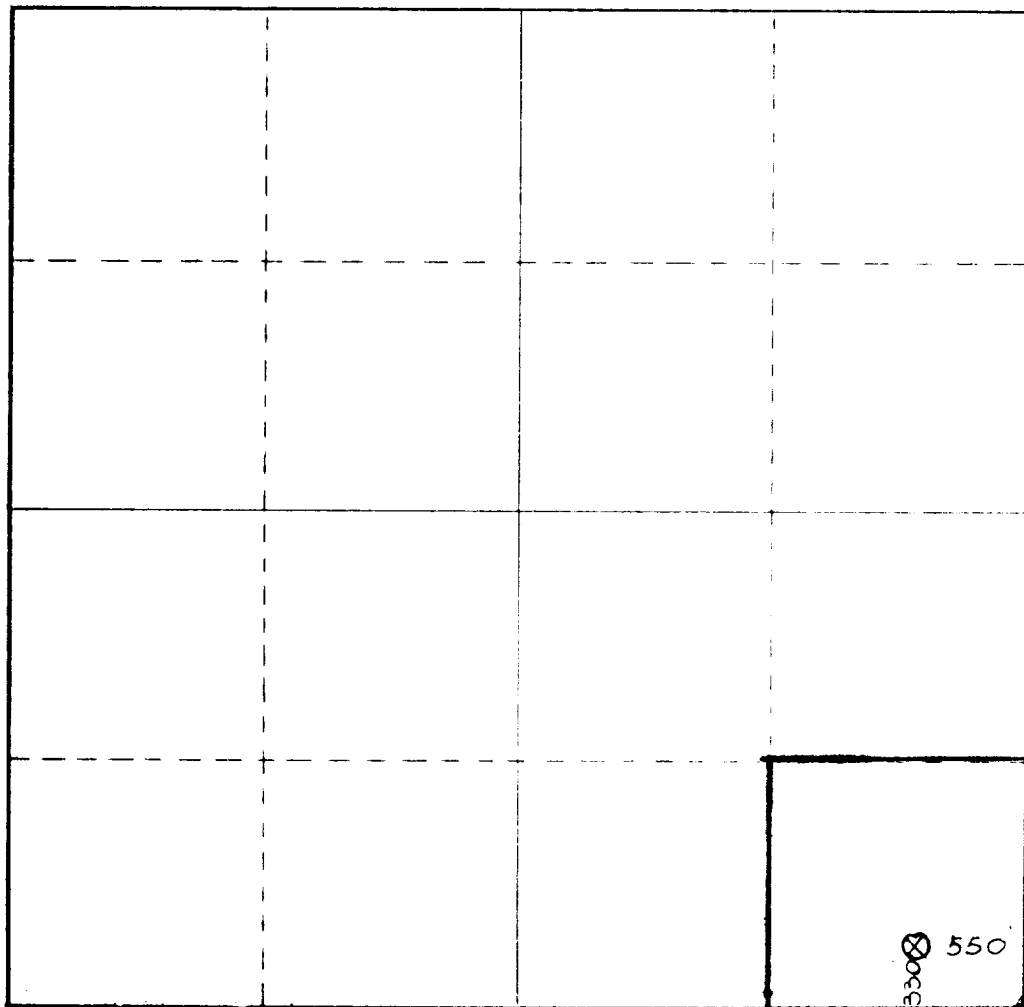
Operator <b>MARBOB ENERGY CORP.</b>		State <b>STATE</b>		Well No. <b>5</b>
Unit Letter <b>P</b>	Section <b>28</b>	Township <b>17 South</b>	Range <b>28 East</b>	County <b>EDDY</b>
Actual Footage Location of Well: <b>330</b> feet from the <b>South</b> line and <b>550</b> feet from the <b>East</b> line.				
Ground Level Elev. <b>3676</b>	Producing Formation <b>Seven Rivers</b>	Lease <b>East Empire Yates</b>		Estimated Acreage <b>40</b> Acres

1. Outline the acreage dedicated to the subject well by colored pencil or hatchure marks on the plat below.
2. If more than one lease is dedicated to the well, outline each and identify the ownership thereof (both as to working interest and royalty).
3. If more than one lease of different ownership is dedicated to the well, have the interests of all owners been consolidated by communitization, unitization, force-pooling, etc?

☐ Yes ☐ No If answer is "yes," type of consolidation \_\_\_\_\_

If answer is "no," list the owners and tract descriptions which have actually been consolidated (Use reverse side of this form if necessary.) \_\_\_\_\_

No allowable will be assigned to the well until all interests have been consolidated (by communitization, unitization, forced-pooling, or otherwise) or until a non-standard unit, eliminating such interests, has been approved by the Commission.



CERTIFICATION

I hereby certify that the information contained herein is true and complete to the best of my knowledge and belief.

*Carolyn Orris*

Name  
**Carolyn Orris**

Position  
**Production Clerk**

Company  
**MARBOB ENERGY CORP.**

Date  
**11/20/80**

I hereby certify that the well location shown on this plat was plotted from field notes of actual surveys made by me or under my supervision, and that the same is true and correct to the best of my knowledge and belief.

Date of Survey  
**July 19, 1979**

Registered Professional Engineer  
in Civil Engineering

*John W. Stearn*

Certificate No. **1559**