

MEXICO OIL CONSERVATION COMMI
WELL LOCATION AND ACREAGE DEDICATION PLAT

Form C-102
 Supersedes C-128
 Effective 1-1-65

All distances must be from the outer boundaries of the Section

Operator MARBOB ENERGY CORPORATION			Lease N. G. PHILLIPS, STATE OF NEW MEX.		Well No. 23
Unit Letter I	Section 27	Township 17 South	Range 28 East	County EDDY	
Actual Footage Location of Well: 2265.7 feet from the South line and 330 feet from the East line					
Ground Level Elev. 3623.5	Producing Formation Seven Rivers	Pool East Empire Yates - SR	Dedicated Acreage: 40 Acres		

1. Outline the acreage dedicated to the subject well by colored pencil or hachure marks on the plat below.
2. If more than one lease is dedicated to the well, outline each and identify the ownership thereof (both as to working interest and royalty).
3. If more than one lease of different ownership is dedicated to the well, have all interests been consolidated by communitization, unitization, force-pooling, etc?

RECEIVED

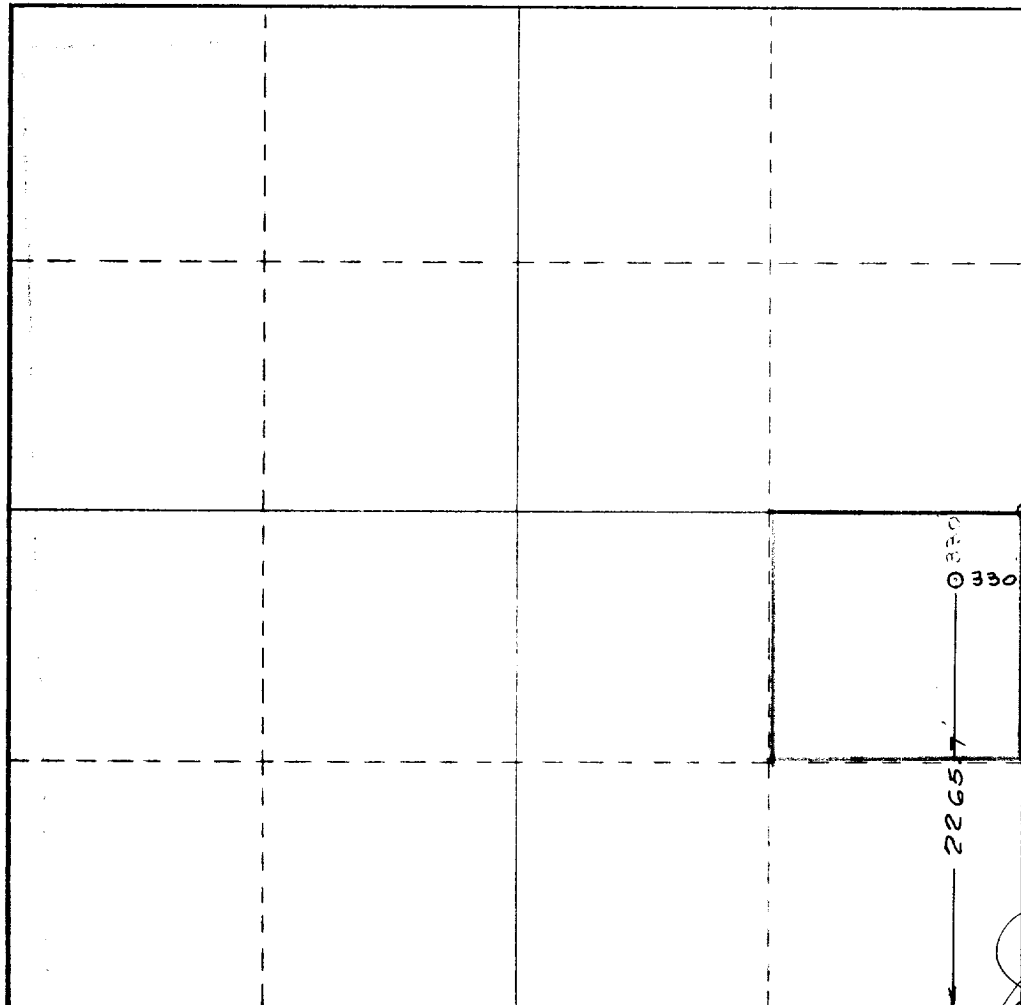
OCT 5 1979

☐ Yes ☐ No If answer is "yes," type of consolidation **O. C. C.**

ARTESIA, OFFICE

If answer is "no," list the owners and tract descriptions which have actually been consolidated. (Use reverse side of this form if necessary.) _____

No allowable will be assigned to the well until all interests have been consolidated (by communitization, unitization, forced-pooling, or otherwise) or until a non-standard unit, eliminating such interests, has been approved by the Commission.



CERTIFICATION

I hereby certify that the information contained herein is true and complete to the best of my knowledge and belief.

Name *Worothy Hammond*
 Position

Gen. Mgr.

Company
Marbob Energy Corporation

Date
6/6/79

I hereby certify that the well location shown on this plat was plotted from field notes of actual surveys made by me or under my supervision, and that the same is true and correct to the best of my knowledge and belief.

Date Surveyed
May 31 & June 1, 1979

Registered Professional Engineer and/or Land Surveyor

John W. Shearn
 Certificate No. **1559**

