

COPIES RECEIVED	
DISTRIBUTION	6
SANTA FE	1
FILE	1
U.S.G.S.	2
LAND OFFICE	1
OPERATOR	1

NEW MEXICO OIL CONSERVATION COMMISSION

RECEIVED

NOV 13 1979

30-015-23062

Form C-101
Revised 1-1-65

5A. Indicate Type of Lease STATE <input checked="" type="checkbox"/> FEE <input type="checkbox"/>
5. State Oil & Gas Lease No. B-636
7. Unit Agreement Name
8. Farm or Lease Name Zait
9. Well No. #4
10. Field and Pool, or Wildcat East Empire Yates 7-R
12. County Eddy
19. Proposed Depth 800'
19A. Formation Seven Rivers
20. Rotary or C.T. Rotary
21. Elevations (show whether DE, RT, etc.) 3588.9 GL
21A. Kind & Status Plug. Bond Statewide
21B. Drilling Contractor Yucca Drilling Co.
22. Approx. Date Work will start November 15, 1979

O.C.C.
APPLICATION FOR PERMIT TO DRILL, DEEPEN, OR PLUG BACK

1a. Type of Work
b. Type of Well
OIL WELL ☒ GAS WELL ☐ OTHER ☐
DEEPEN ☐ PLUG BACK ☐
SINGLE ZONE ☐ MULTIPLE ZONE ☐

2. Name of Operator
Collier & Collier

3. Address of Operator
P.O. Box 798, Artesia, New Mexico 88210

4. Location of Well
UNIT LETTER L LOCATED 2310 FEET FROM THE South LINE
AND 450 FEET FROM THE West LINE OF SEC. 22 TWP. 17S RGE. 28E NMPM

23.

PROPOSED CASING AND CEMENT PROGRAM

SIZE OF HOLE	SIZE OF CASING	WEIGHT PER FOOT	SETTING DEPTH	SACKS OF CEMENT	EST. TOP
10 3/4"	8 5/8"	26#	100'	100 Sxs.	Surface
6 5/8"	4 1/2"	9.50#	800'	250 Sxs.	Surface

November 15, 1979

Plan to spud a Seven Rivers well using 10 3/4" cit and run 100' of 8 5/8", 26# casing and circulate cement to surface with approximately 100 Sxs. of Class "C" cement. Will then drill out from 8 5/8" with 6 5/8" bit and reach T.D. of 800'. Will run 800' of 4 1/2", 9.50# casing and circulate cement to surface using 250 Sxs. of Class "C" cement.

APPROVAL VALID
FOR 90 DAYS UNLESS
DRILLING COMMENCED

EXPIRES 2-14-80

IN ABOVE SPACE DESCRIBE PROPOSED PROGRAM; IF PROPOSAL IS TO DEEPEN OR PLUG BACK, GIVE DATA ON PRESENT PRODUCTIVE ZONE AND PROPOSED NEW PRODUCTIVE ZONE. GIVE BLOWOUT PREVENTER PROGRAM, IF ANY.

I hereby certify that the information above is true and complete to the best of my knowledge and belief.

Signed G. Lee M. Webb Title Secretary Date 11/13/79

(This space for State Use)

APPROVED BY W. A. Gressett TITLE SUPERVISOR, DISTRICT II DATE NOV 14 1979

CONDITIONS OF APPROVAL, IF ANY:

surface below 8 5/8" & 4 1/2"

Notify N.M.O.C.C. in sufficient time to witness completion of the 4 1/2" casing.

NEW MEXICO OIL CONSERVATION COMMISSION
WELL LOCATION AND ACREAGE DEDICATION LAT

Form C-102
Supersedes C-128
Effective 1-1-65

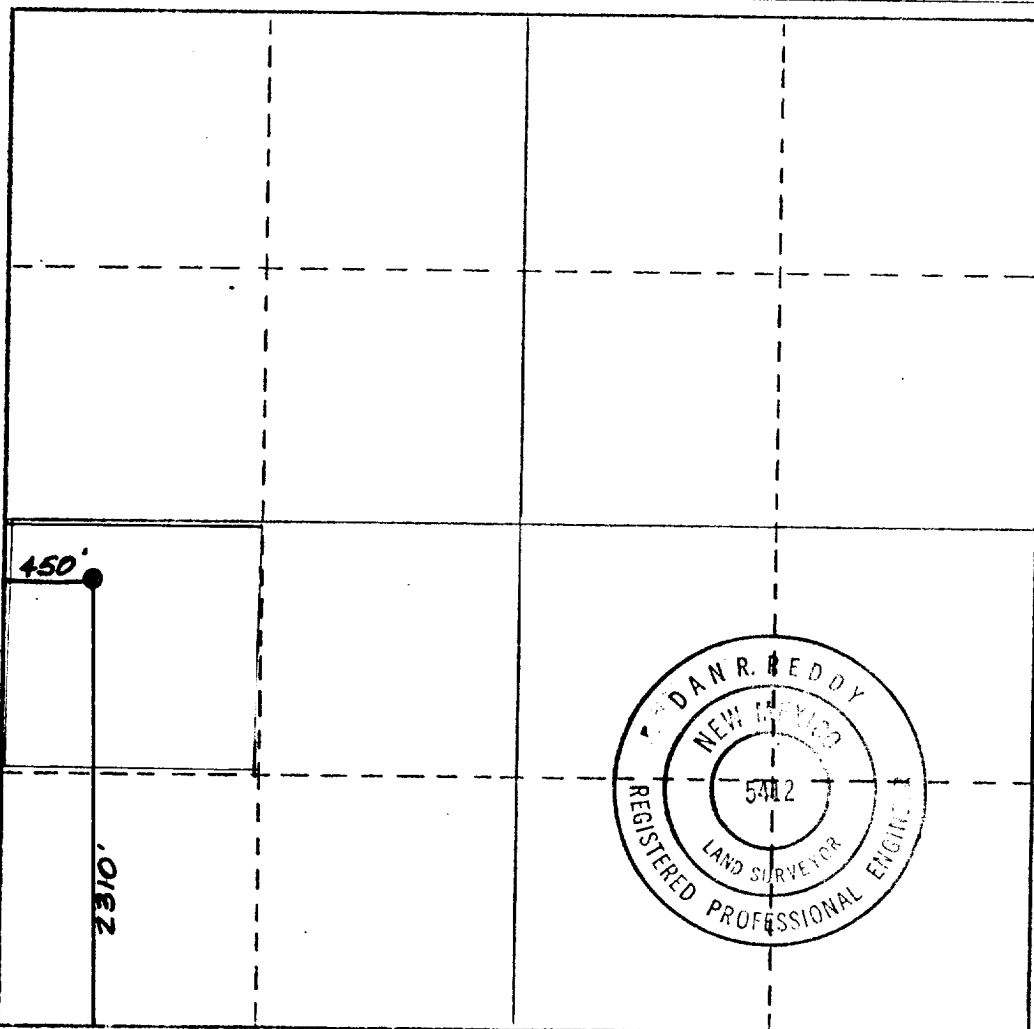
All distances must be from the outer boundaries of the Section.

Operator COLLIER & COLLIER			Lease Zait		Well No. 4
Unit Letter L	Section 22	Township 17 South	Range 28 East	County Eddy	
Actual Footage Location of Well: 2310 feet from the South line and 450 feet from the East line					
Ground Level Elev. 3588.9	Producing Formation Seven Rivers		Pool East Empire Yates Seven Rivers		Dedicated Acreage: 40 Acres

1. Outline the acreage dedicated to the subject well by colored pencil or ink on the plat below.
 2. If more than one lease is dedicated to the well, outline each and identify the ownership thereof (both as to working interest and royalty).
 3. If more than one lease of different ownership is dedicated to the well, have the interests of all owners been consolidated by communitization, unitization, force-pooling, etc? **ARTESIA, OFFICE**
- ☐ Yes ☐ No If answer is "yes," type of consolidation _____

If answer is "no," list the owners and tract descriptions which have actually been consolidated. (Use reverse side of this form if necessary.) _____

No allowable will be assigned to the well until all interests have been consolidated (by communitization, unitization, forced-pooling, or otherwise) or until a non-standard unit, eliminating such interests, has been approved by the Commission.



CERTIFICATION

I hereby certify that the information contained herein is true and complete to the best of my knowledge and belief.

C. Lee Munk
Name
Secretary
Position
Collier & Collier
Company
November 13, 1979
Date

I hereby certify that the well location shown on this plat was plotted from field notes of actual surveys made by me or under my supervision, and that the same is true and correct to the best of my knowledge and belief.

Date Surveyed
Nov. 13, 1979
Registered Professional Engineer and/or Land Surveyor

Dan R. Reddy
Certificate No.
NM PE&LS #5412