

30-015-23117

NO. OF COPIES RECEIVED	
DISTRIBUTION	
SANTA FE	1
FILE	1
U.S.G.S.	2
LAND OFFICE	
OPERATOR	1

NEW MEXICO OIL CONSERVATION COMMISSION

RECEIVED

JAN - 8 1980

O. C. D.

Form C-101
Revised 1-1-65

5A. Indicate Type of Lease
STATE ☐ FEDERAL ☒

5. State Oil & Gas Lease No.

APPLICATION FOR PERMIT TO DRILL, DEEPEN, OR PLUG BACK

1a. Type of Work
b. Type of Well
OIL WELL ☒ GAS WELL ☐ OTHER ☐
DEEPEN ☐ PLUG BACK ☐
SINGLE ZONE ☒ MULTIPLE ZONE ☐
2. Name of Operator
Marbob Energy Corp.
3. Address of Operator
P.O. Box 304, Artesia, N.M. 88210
4. Location of Well
UNIT LETTER N LOCATED 330 FEET FROM THE South LINE
1640.7 FEET FROM THE West LINE OF SEC. 27 TWP. 17S RGE. 28E NADEN
19. Proposed Depth
1000'
19A. Formation
Seven Rivers
20. Rotary or C.T.
Rotary
21. Elevation (Show whether DT, RT, etc.)
3566 GR
21A. Kind & Status Plug. Bond
Statewide Active
21B. Drilling Contractor
Yucca Drilling Co.
22. Approx. Date Work will start
1/15/80

7. Unit Agreement Name

8. Farm or Lease Name
ABO

9. Well No.
3

10. Field and Pool, or Willent
East Empire Yates SR

11. County
Eddy

PROPOSED CASING AND CEMENT PROGRAM

SIZE OF HOLE	SIZE OF CASING	WEIGHT PER FOOT	SETTING DEPTH	SACKS OF CEMENT	EST. TOP
11"	8 5/8"	24#	80'	1 1/2 yds. ready mix	
7 7/8"	4 1/2"	10.50#	1000'	250 sax	

We propose to drill to approximately 1000' to test the Seven Rivers formation. Will run 80' of 8 5/8" 24# casing, dump 1 1/2 yds. ready mix w/ 1/2" gravel down back side of casing. Will then drill on to 1000' & run 4 1/2" 10.50# casing & circulate cement.

APPROVAL VALID
FOR 90 DAYS UNLESS
DRILLING COMMENCED,

EXPIRES 4-9-80

IN ABOVE SPACE DESCRIBE PROPOSED PROGRAM: IF PROPOSAL IS TO DEEPEN OR PLUG BACK, GIVE DATA ON PRESENT PRODUCTIVE ZONE AND PROPOSED NEW PRODUCTIVE ZONE. GIVE BLOWOUT PREVENTER PROGRAM, IF ANY.

I hereby certify that the information above is true and complete to the best of my knowledge and belief.

Signed Carolyn Arris Title Secretary Date 1/8/80

(This space for State Use)

APPROVED BY W.A. Gressett TITLE SUPERVISOR, DISTRICT II DATE JAN - 9 1980

CONDITIONS OF APPROVAL, IF ANY:

Cement must be circulated to surface labeled 8 5/8" 4 1/2" casing

Verify casing 4 1/2"

NEW MEXICO OIL CONSERVATION COMMISSION
WELL LOCATION AND ACREAGE DEDICATION PLAT

Form C-102
 Supersedes C-128
 Effective 1-1-65

All distances must be from the outer boundaries of the Section

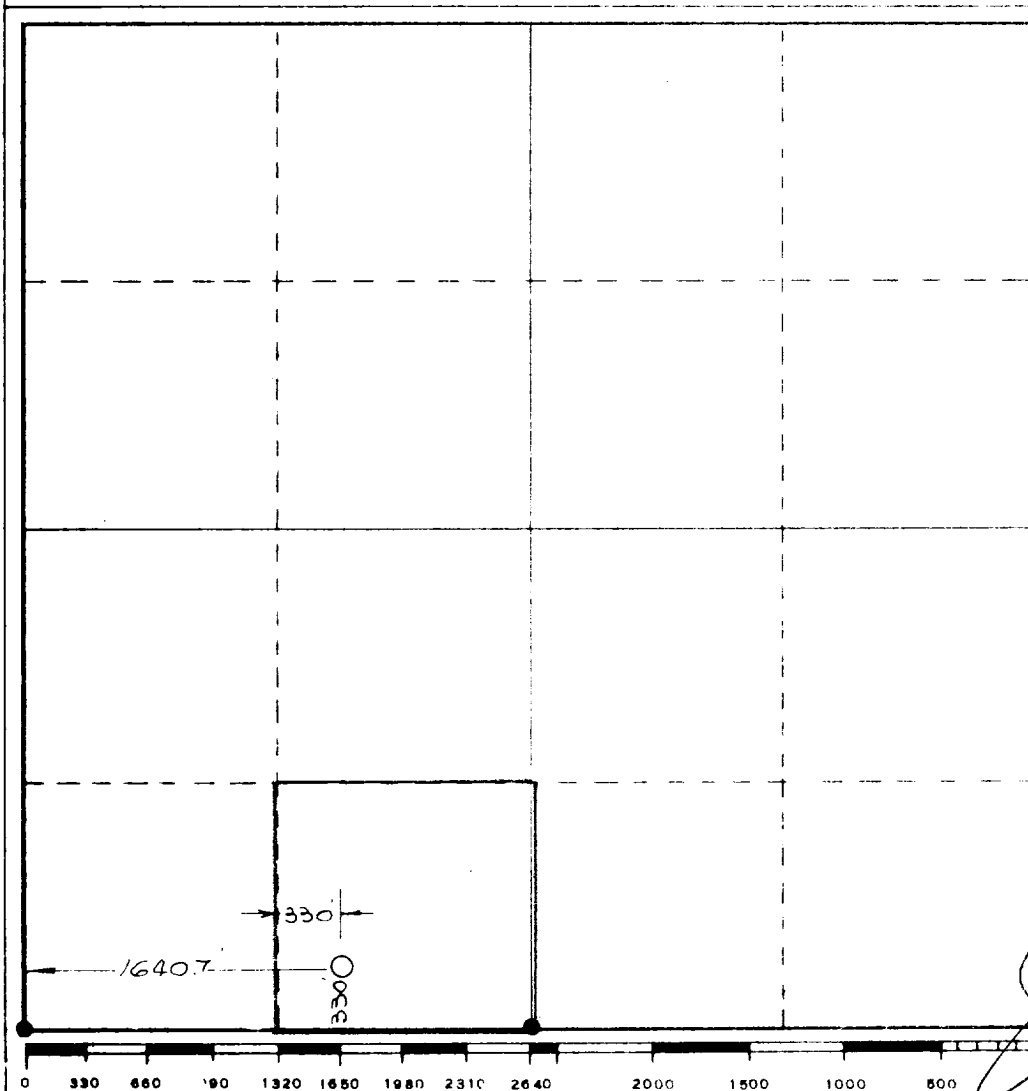
Operator MARBOB ENERGY CORPORATION			Lease ABO		Well No. 3
Unit Letter N	Section 27	Township 17 South	Range 28 East	County Eddy	
Actual Footage Location of Well: 330 feet from the South line and 1640.7 feet from the West line.					
Ground Level Elev. 3677	Producing Formation Seven Rivers		Well East Empire Yates Seven Rivers		Consented Acreage 40 Acres

1. Outline the acreage dedicated to the surface by colored pencil or hatchure marks on the plat below.
2. If more than one lease is dedicated to the well, outline each and identify the ownership thereof (both as to working interest and royalty).
3. If more than one lease of different ownership is dedicated to the well, have the interests of all owners been consolidated by communitization, unitization, **ARTESIA, OFFICE** etc?

☐ Yes ☐ No If answer is "yes," type of consolidation _____

If answer is "no," list the owners and tract descriptions which have actually been consolidated. (Use reverse side of this form if necessary.) _____

No allowable will be assigned to the well until all interests have been consolidated (by communitization, unitization, forced-pooling, or otherwise) or until a non-standard unit, eliminating such interests, has been approved by the Commission.



CERTIFICATION

I hereby certify that the information contained herein is true and complete to the best of my knowledge and belief.

Carolyn Orris

Name

Carolyn Orris

Position

Secretary

Company

Marbob Energy Corp.

Date

1/8/80

I hereby certify that the well location shown on this plat was plotted from field notes of actual surveys made by me or under my supervision, and that the same is true and correct to the best of my knowledge and belief.

Date Surveyed

November 15, 1979

Registered Professional Engineer
 and/or Land Surveyor

John W. Shearn

Certificate No.

1559