

NO. OF COPIES RECEIVED	
DISTRIBUTION	
SANTA FE	1
FILE	1 ✓
U.S.G.S.	2
LAND OFFICE	1
OPERATOR	1

NEW MEXICO OIL CONSERVATION COMMISSION

RECEIVED

JAN 21 1980

30-015-23138  
Form C-101  
Revised 1-1-65

5A. Indicate Type of Lease STATE <input checked="" type="checkbox"/> FEE <input type="checkbox"/>
5. State Oil & Gas Lease No. B-1111
7. Unit Agreement Name
8. Farm or Lease Name St. B-1111, Tr 1
9. Well No. # 8
10. Field and Pool, or Willcat East Empire Yates 7-R
12. County Eddy
13. Proposed Depth 800'
19A. Formation Seven Rivers
20. Rotary or C.T. Rotary
21. Elevations (Show whether DT, RT, etc.) 3584.2
21A. Kind & Status Plug. Bond Statewide
21B. Drilling Contractor Yucca Drilling Co., Inc.
22. Approx. Date Work will start January 23, 1980

APPLICATION FOR PERMIT TO DRILL, DEEPEN, OR PLUG BACK

1a. Type of Work  
b. Type of Well  
OIL WELL ☒ GAS WELL ☐ OTHER ☐  
DEEPEN ☐ PLUG BACK ☐  
SINGLE ZONE ☐ MULTIPLE ZONE ☐

2. Name of Operator  
Collier Energy, Inc.

3. Address of Operator  
P.O. Box 798, Artesia, New Mexico 88210

4. Location of Well  
UNIT LETTER H LOCATED 2310 FEET FROM THE North LINE  
AND 330 FEET FROM THE East LINE OF SEC. 22 TWP. 17S RGE. 28E NMPM

21. Elevations (Show whether DT, RT, etc.)  
3584.2

21A. Kind & Status Plug. Bond  
Statewide

21B. Drilling Contractor  
Yucca Drilling Co., Inc.

22. Approx. Date Work will start  
January 23, 1980

PROPOSED CASING AND CEMENT PROGRAM

SIZE OF HOLE	SIZE OF CASING	WEIGHT PER FOOT	SETTING DEPTH	SACKS OF CEMENT	EST. TOP
7 7/8"	4 1/2"	9 1/2#	800'	250 Sxs.	Surface

~~January 7, 1980~~

Plan to drill Seven Rivers well, using 7 7/8" bit and reach T-D approx. 800'.

~~January 8, 1980~~

Plan to run 800' of 4 1/2", 9 1/2# casing and circulate with 250 Sxs. class "C" cement to surface.

APPROVAL VALID  
FOR 90 DAYS UNLESS  
DRILLING COMMENCED,

EXPIRES 4-23-80

IN ABOVE SPACE DESCRIBE PROPOSED PROGRAM; IF PROPOSAL IS TO DEEPEN OR PLUG BACK, GIVE DATA ON PRESENT PRODUCTIVE ZONE AND PROPOSED NEW PRODUCTIVE ZONE. GIVE BLOWOUT PREVENTER PROGRAM, IF ANY.

I hereby certify that the information above is true and complete to the best of my knowledge and belief.

Signed [Signature] Title Secretary Date January 3, 1980

(This space for State Use)

APPROVED BY [Signature] TITLE SUPERVISOR, DISTRICT II DATE JAN 23 1980

CONDITIONS OF APPROVAL, IF ANY:

Cement must be circulated to  
surface behind 4 1/2" casing

Notify N.M.O.C.C. in sufficient  
time to witness cementing  
the 4 1/2" casing

All distances must be from the outer boundaries of the Section.

Operator <b>COLLIER ENERGY, INC.</b>		Lease <b>St. B-1111, Tr. 1</b>		Well No. <b>#8</b>
Unit Letter <b>H</b>	Section <b>22</b>	Township <b>17 South</b>	Range <b>28 East</b>	County <b>Eddy</b>
Actual Footage Location of Well: <b>2310</b> feet from the <b>North</b> line and <b>330</b> feet from the <b>East</b> line				
Ground Level Elev. <b>3584.2</b>	Existing Formation <b>Seven Rivers</b>	Pool <b>Wd</b>	Dedicated Acreage <b>40</b>	
East Empire Yates Seven Rivers				

1. Outline the acreage dedicated to the subject well by colored pencil or hatchure marks on the plat below.
2. If more than one lease is dedicated to the well, outline each and identify the ownership thereof (both as to working interest and royalty).

RECEIVED

JAN 21 1980

3. If more than one lease of different ownership is dedicated to the well, have the interests of all owners been consolidated by communitization, unitization, force-pooling, etc?

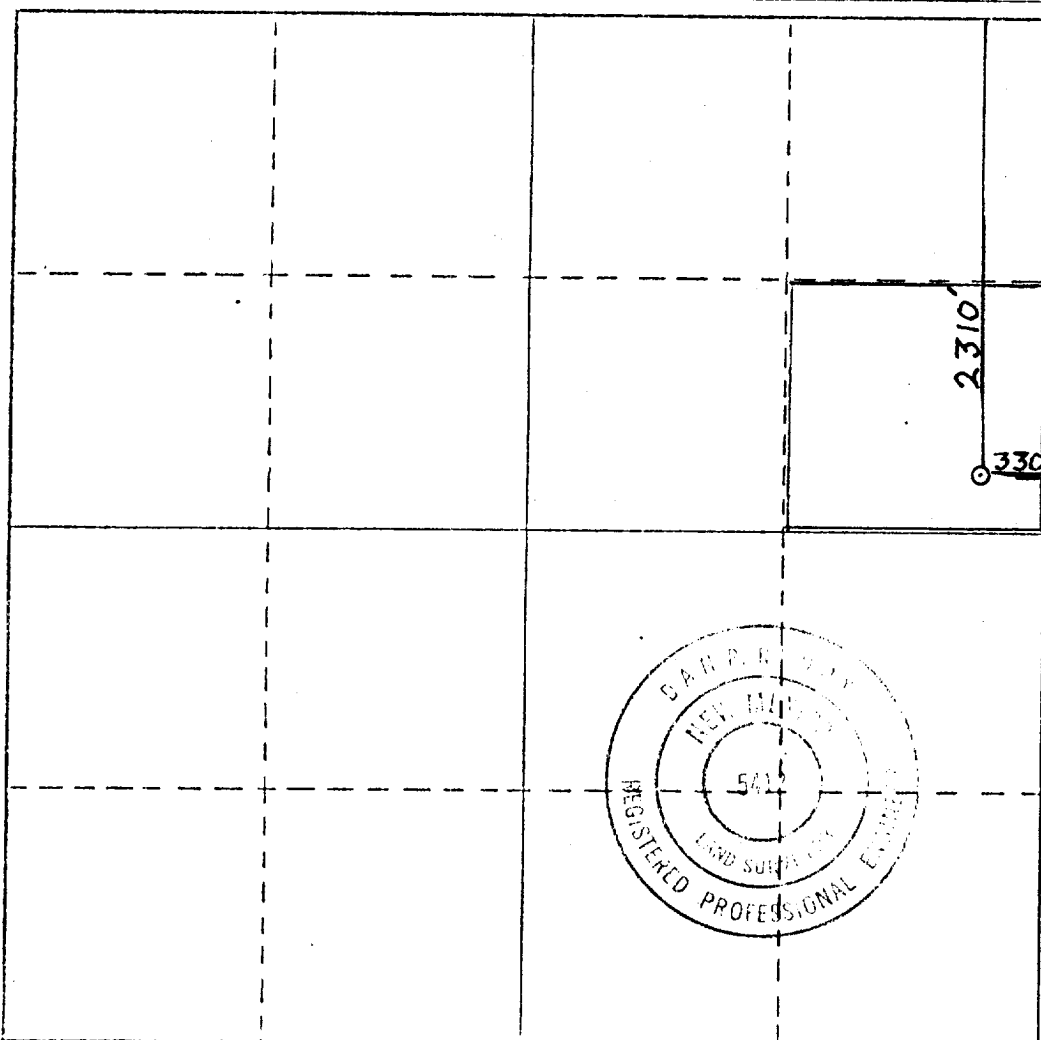
O. C. D.

ARTESIA, OFFICE

☐ Yes ☐ No If answer is "yes," type of consolidation \_\_\_\_\_

If answer is "no," list the owners and tract descriptions which have actually been consolidated. (Use reverse side of this form if necessary.) \_\_\_\_\_

No allowable will be assigned to the well until all interests have been consolidated (by communitization, unitization, forced-pooling, or otherwise) or until a non-standard unit, eliminating such interests, has been approved by the Commission.



### CERTIFICATION

I hereby certify that the information contained herein is true and complete to the best of my knowledge and belief.

*Cheri Monk*

Name

Cheri Monk

Position

Secretary

Company

Collier Energy, Inc.  
January 3, 1980

Date

I hereby certify that the well location shown on this plat was plotted from field notes of actual surveys made by me or under my supervision, and that the same is true and correct to the best of my knowledge and belief.

Date Surveyed

Dec. 27, 1979

Registered Professional Engineer and/or Land Surveyor

*Dan R. Reed*

Certificate No.

NM PE&LS #5412

