

NO. OF COPIES RECEIVED	
DISTRIBUTION	
SANTA FE	1
FILE	1
U.S.G.S.	2
LAND OFFICE	
OPERATOR	1

RECEIVED
NEW MEXICO OIL CONSERVATION COMMISSION

FEB 7 1980

O. C. D.
ARTESIA, OFFICE

30-015-23169
Form C-101
Revised 1-1-65

5A. Indicate Type of Lease	
STATE <input type="checkbox"/>	FEE <input checked="" type="checkbox"/>
5. State Oil & Gas Lease No.	

APPLICATION FOR PERMIT TO DRILL, DEEPEN, OR PLUG BACK

1a. Type of Work		7. Unit Agreement Name	
b. Type of Well OIL WELL <input checked="" type="checkbox"/> GAS WELL <input type="checkbox"/> OTHER <input type="checkbox"/>		8. Farm or Lease Name Achen Frey DM	
2. Name of Operator Yates Petroleum Corporation		9. Well No. 7	
3. Address of Operator 207 S. 4th Street, Artesia, NM 88210		10. Field and Pool, or Wildcat und EagleCreek S.A.	
4. Location of Well UNIT LETTER L LOCATED 1650 FEET FROM THE South LINE AND 990 FEET FROM THE West LINE OF SEC. 13 TWP. 17S RGE. 25E NMPM		12. County Eddy	
19. Proposed Depth Approx. 1550'		19A. Formation San Andres	20. Rotary or C.T. Rotary
21. Elevations (Show whether DF, RT, etc.) 3460' GR	21A. Kind & Status Plug. Bond Blanket	21B. Drilling Contractor Cactus Drilling Co.	22. Approx. Date Work will start As soon as approved

23.

PROPOSED CASING AND CEMENT PROGRAM

SIZE OF HOLE	SIZE OF CASING	WEIGHT PER FOOT	SETTING DEPTH	SACKS OF CEMENT	EST. TOP
15"	10 3/4"	32#	approx. 300'	175 sx Circulate	
9 7/8"	7"	20#	approx. 1200'	870 sx Circulate	
6 1/4"	4 1/2" & 5 1/2"	10.5# & 15.5#	approx. 1550'	175 sx	

Propose to drill a San Andres test. Approximately 300' of 10 3/4" casing will be run and cemented to the surface to shut off surface gravel and caving, and 7" casing will be run 100' below the Artesian Zone, cemented to the surface. A tapered oil string will be run and cemented, perforated and sand frac'd for production.

MUD PROGRAM: Fresh water mud w/LCM from surface to 1180', fresh water to total depth.

BOP PROGRAM: BOP's to be installed on 7" casing and tested daily for operational.

APPROVAL VALID
FOR 90 DAYS UNLESS
DRILLING COMMENCED,
EXPIRES 5-8-80

IN ABOVE SPACE DESCRIBE PROPOSED PROGRAM: IF PROPOSAL IS TO DEEPEN OR PLUG BACK, GIVE DATA ON PRESENT PRODUCTIVE ZONE AND PROPOSED NEW PRODUCTIVE ZONE. GIVE BLOWOUT PREVENTER PROGRAM, IF ANY.

I hereby certify that the information above is true and complete to the best of my knowledge and belief.

Signed Glenn Rodriguez Title Geographer Date 2/5/80

(This space for State Use)

APPROVED BY W.A. Gussert TITLE SUPERVISOR, DISTRICT II DATE FEB 6 1980

CONDITIONS OF APPROVAL, IF ANY:

Cement must be circulated to

Notify N.M.O.C.C. in sufficient time to witness cementing

surface behind all casing

NEW MEXICO OIL CONSERVATION COMMISSION
WELL LOCATION AND ACREAGE DEDICATION PLAT

Form C-102
Supersedes C-128
Effective 1-1-65

All distances must be from the outer boundaries of the Section.

Operator YATES PETROLEUM CORPORATION			Lease Achen Frey DM		Well No. 7
Unit Letter L	Section 13	Township 17 South	Range 25 East	County Eddy	

Actual Footage Location of Well:

1650 feet from the **South** line and **990** feet from the **West** line

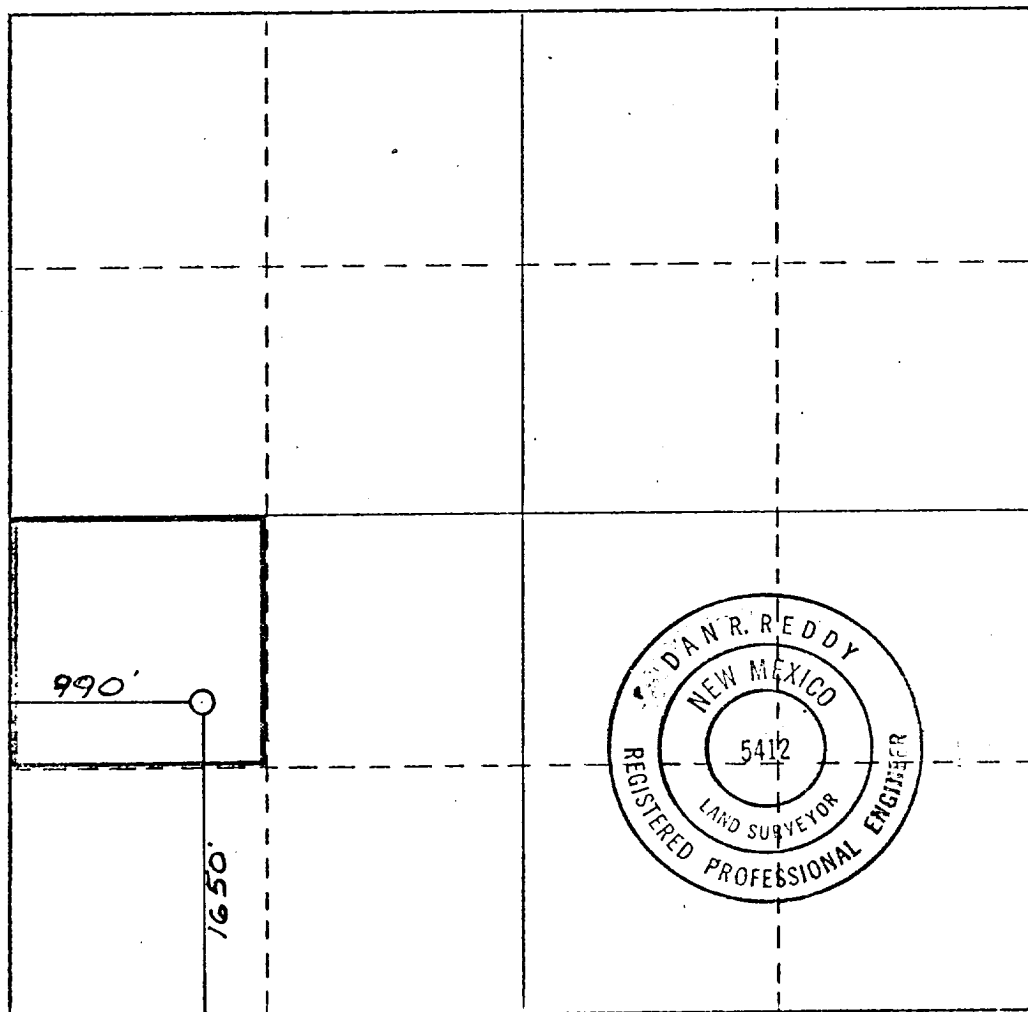
Ground Level Elev. 3460.0	Producing Formation SAN ANTONIO	Pool Un Eagle Creek S.A.	Dedicated Acreage: 40 Acres
-------------------------------------	---	------------------------------------	---------------------------------------

1. Outline the acreage dedicated to the subject well by colored pencil or by other marks on the plat below.
2. If more than one lease is dedicated to the well, outline each and identify the ownership thereof (both as to working interest and royalty).
3. If more than one lease of different ownership is dedicated to the well, have the interests of all owners been consolidated by communitization, unitization, force-pooling, etc?

☐ Yes ☐ No If answer is "yes," type of consolidation _____

If answer is "no," list the owners and tract descriptions which have actually been consolidated. (Use reverse side of this form if necessary.) _____

No allowable will be assigned to the well until all interests have been consolidated (by communitization, unitization, forced-pooling, or otherwise) or until a non-standard unit, eliminating such interests, has been approved by the Commission.



CERTIFICATION

I hereby certify that the information contained herein is true and complete to the best of my knowledge and belief.

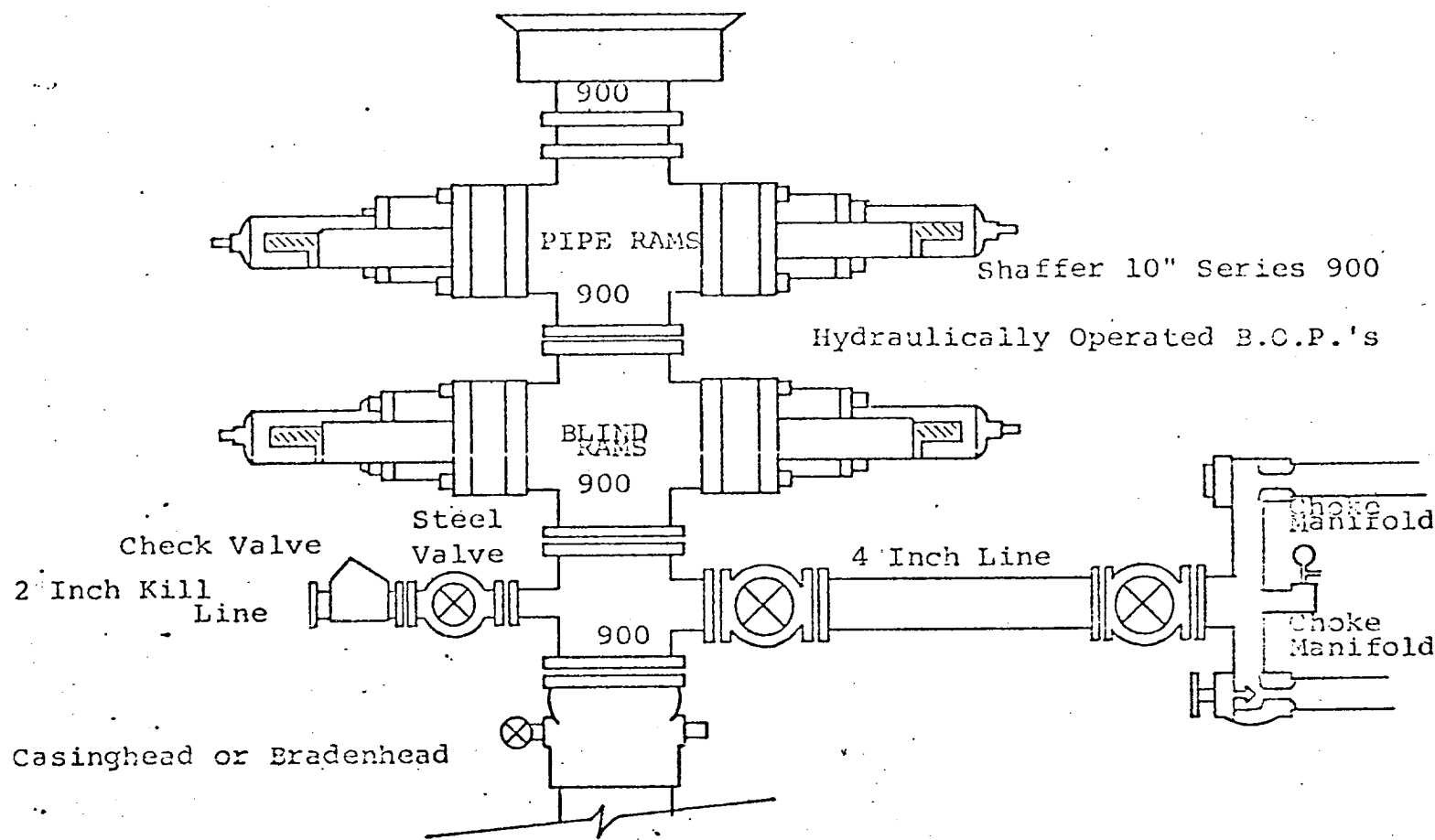
Gliserio Rodriguez
Name
GLISERIO RODRIGUEZ
Position
GEOGRAPHER
Company
YATES PETROLEUM CORP
Date
2-5-80

I hereby certify that the well location shown on this plat was plotted from field notes of actual surveys made by me or under my supervision, and that the same is true and correct to the best of my knowledge and belief.

Date Surveyed
Nov. 6, 1979
Registered Professional Engineer and/or Land Surveyor

Dan B. Reddy
Certificate No.
NM PE&LS #5412

0 330 660 990 1320 1650 1980 2310 2640 2000 1500 1000 500 0



THE FOLLOWING CONSTITUTE MINIMUM BLOWOUT PREVENTER REQUIREMENTS

1. All preventers to be hydraulically operated with secondary manual controls installed prior to drilling out from under casing.
2. Choke outlet to be a minimum of 4" diameter.
3. Kill line to be of all steel construction of 2" minimum diameter.
4. All connections from operating manifolds to preventers to be all steel, hole or tube a minimum of one inch in diameter.
5. The available closing pressure shall be at least 15% in excess of that required with sufficient volume to operate the B.O.P.'s.
6. All connections to and from preventer to have a pressure rating equivalent to that of the B.O.P.'s.
7. Inside blowout preventer to be available on rig floor.
8. Operating controls located a safe distance from the rig floor.
9. Hole must be kept filled on trips below intermediate casing. Operator not responsible for blowouts resulting from not keeping hole full.
10. D. P. float must be installed and used below zone of first gas intrusion.