

NO. OF COPIES RECEIVED	
DISTRIBUTION	
SANTA FE	
FILE	/
U.S.G.S.	
LAND OFFICE	
OPERATOR	/

NEW MEXICO OIL CONSERVATION COMMISSION

RECEIVED

APR 10 1981

O. C. D.
ARTESIA, OFFICE

Form C-101
Revised 1-1-65

5A. Indicate Type of Lease STATE <input type="checkbox"/> FEE <input checked="" type="checkbox"/>
5. State Oil & Gas Lease No.
7. Unit Agreement Name
8. Farm or Lease Name Achen Frey DM
9. Well No. 7
10. Field and Pool, or Wildcat Eagle Creek S.A.
12. County Eddy
19. Proposed Depth approx. 1550'
19A. Formation San Andres
20. Rotary or C.T. Rotary
21A. Kind & Status Plug. Bond Blanket
21B. Drilling Contractor Cactus Drilling Co.
22. Approx. Date Work will start As soon as approved

APPLICATION FOR PERMIT TO DRILL, DEEPEN, OR PLUG BACK

a. Type of Work

b. Type of Well
OIL WELL ☒ GAS WELL ☐ OTHER ☐
DEEPEN ☐ PLUG BACK ☐
SINGLE ZONE ☐ MULTIPLE ZONE ☐

c. Name of Operator
Yates Petroleum Corporation ✓

d. Address of Operator
207 South 4th Street, Artesia, NM 88210

e. Location of Well
UNIT LETTER L LOCATED 1650 FEET FROM THE South LINE
990 FEET FROM THE West LINE OF SEC. 13 TWP. 17S RGE. 25E NMPM

f. Elevations (Show whether DF, RT, etc.)
3460' GR

PROPOSED CASING AND CEMENT PROGRAM

SIZE OF HOLE	SIZE OF CASING	WEIGHT PER FOOT	SETTING DEPTH	SACKS OF CEMENT	EST. TOP
15"	10 3/4"	32#	approx. 300'	175 sx	Circulate
9 7/8"	7"	20#	approx. 1200'	870 sx	Circulate
6 1/4"	4 1/2" & 5 1/2"	10.5# & 15.5#	approx. 1550'	175 sx	

Propose to drill a San Andres test. Approximately 300' of 10 3/4" casing will be run and cemented to the surface to shut off surface gravel and caving, and 7" casing will be run 100' below the Artesian Zone, cemented to the surface. A tapered oil string will be run and cemented, perforated and sand frac'd for production.

MUD PROGRAM: Fresh water mud w/LCM from surface to 1180', fresh water to total depth

BOP PROGRAM: BOP's to be installed on 7" casing and tested daily for operational.

APPROVAL VALID FOR 180 DAYS
PERMIT EXPIRES 10-14-81
UNLESS DRILLING UNDERWAY

ABOVE SPACE DESCRIBE PROPOSED PROGRAM: IF PROPOSAL IS TO DEEPEN OR PLUG BACK, GIVE DATA ON PRESENT PRODUCTIVE ZONE AND PROPOSED NEW PRODUCTION ZONE. GIVE BLOWOUT PREVENTER PROGRAM, IF ANY.

I hereby certify that the information above is true and complete to the best of my knowledge and belief.

By Steven Rodriguez Title Geographer Date April 10, 1981
(This space for State Use)

APPROVED BY W.A. Gressett TITLE SUPERVISOR, DISTRICT II DATE APR 14 1981

CONDITIONS OF APPROVAL, IF ANY:

Cement must be circulated to
surface behind all casing

Notify N.M.O.C.C. in sufficient
time to witness cementing
the 7" casing

NEW MEXICO OIL CONSERVATION COMMISSION
WELL LOCATION AND ACREAGE DEDICATION PLAT

Form C-102
Supersedes C-128
Effective 1-1-65

All distances must be from the outer boundaries of the Section.

Operator YATES PETROLEUM CORPORATION			Lease Achen Frey DM			Well No. 7
Section Letter L	Section 13	Township 17 South	Range 25 East	County Eddy		

Actual Footings Location of Well:

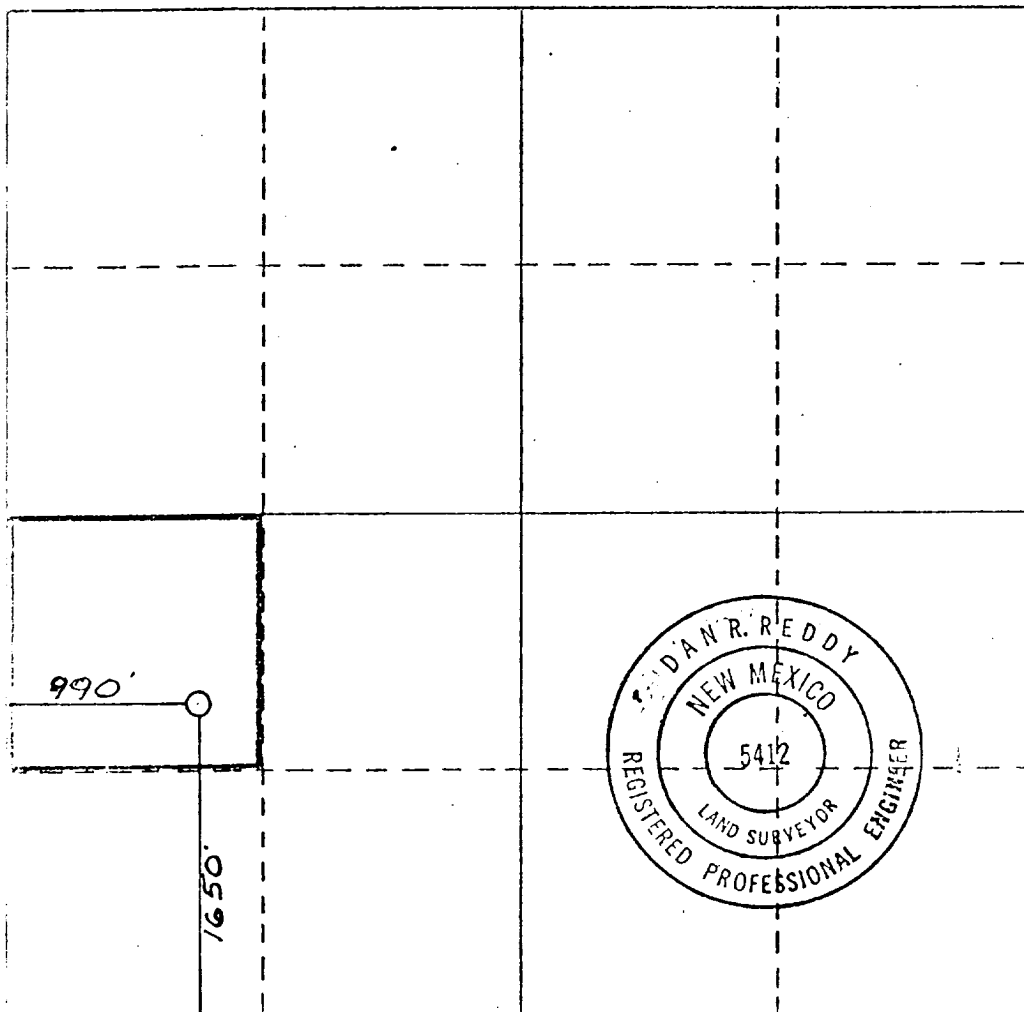
1650 feet from the South line and 990 feet from the West line	Ground Level Elev. 3460.0	Producing Formation SAN ANDRES	Pool Eagle Creek SA.	Dedicated Acreage: 40 Acres
-------------------------------------------------------------------------------------------	-------------------------------------	------------------------------------------	--------------------------------	---------------------------------------

- Outline the acreage dedicated to the subject well by colored pencil or hachure marks on the plat below.
- If more than one lease is dedicated to the well, outline each and identify the ownership thereof (both as to working interest and royalty).
- If more than one lease of different ownership is dedicated to the well, have the interests of all owners been consolidated by communitization, unitization, force-pooling, etc?

☐ Yes ☐ No If answer is "yes," type of consolidation _____

If answer is "no," list the owners and tract descriptions which have actually been consolidated. (Use reverse side of this form if necessary.) _____

No allowable will be assigned to the well until all interests have been consolidated (by communitization, unitization, forced-pooling, or otherwise) or until a non-standard unit, eliminating such interests, has been approved by the Commission.



CERTIFICATION

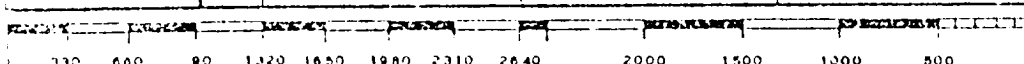
I hereby certify that the information contained herein is true and complete to the best of my knowledge and belief.

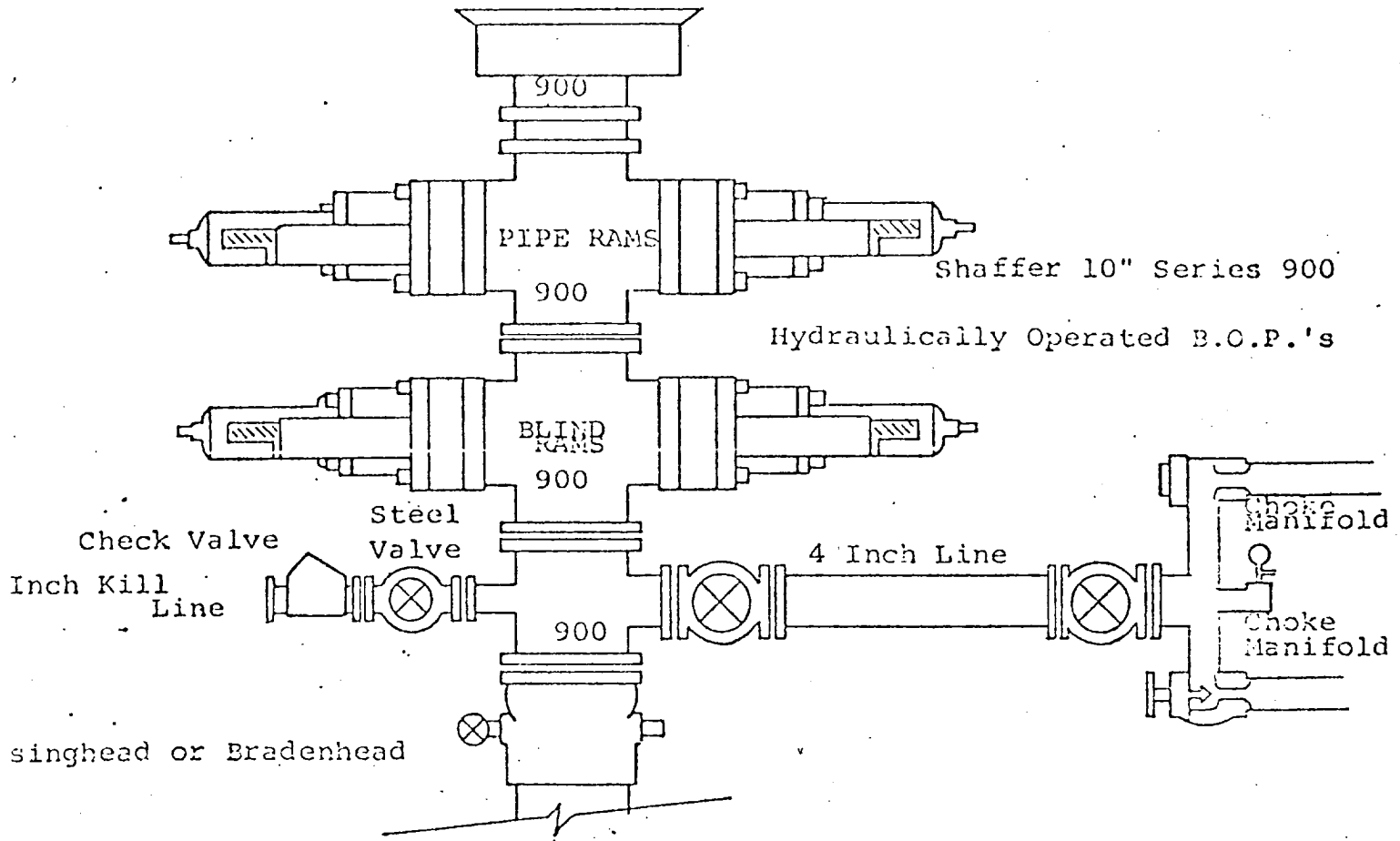
Elisio Rodriguez
Name
ELISIO RODRIGUEZ
Position
GEOGRAPHER
Company
YATES PETROLEUM CORP.
Date
2-5-80

I hereby certify that the well location shown on this plat was plotted from field notes of actual surveys made by me or under my supervision, and that the same is true and correct to the best of my knowledge and belief.

Date Surveyed
Nov. 6, 1979
Registered Professional Engineer and/or Land Surveyor

Dan R. Reddy
Certificate No.
NM PE&LS #5412





THE FOLLOWING CONSTITUTE MINIMUM BLOWOUT PREVENTER REQUIREMENTS

- All preventers to be hydraulically operated with secondary manual controls installed prior to drilling out from under casing.
- Choke outlet to be a minimum of 4" diameter.
- Kill line to be of all steel construction of 2" minimum diameter.
- All connections from operating manifolds to preventers to be all steel, hole or tube a minimum of one inch in diameter.
- The available closing pressure shall be at least 15% in excess of that required with sufficient volume to operate the B.O.P.'s.
- All connections to and from preventer to have a pressure rating equivalent to that of the B.O.P.'s.
- Inside blowout preventer to be available on rig floor.
- Operating controls located a safe distance from the rig floor.
- Hole must be kept filled on trips below intermediate casing. Operator not responsible for blowouts resulting from not keeping hole full.
- D. P. float must be installed and used below zone of first gas intrusion.