

NO. OF COPIES RECEIVED	
DISTRIBUTION	
SANTA FE	1
FILE	1
U.S.G.S.	2
LAND OFFICE	
OPERATOR	1

NEW MEXICO OIL CONSERVATION COMMISSION

FEB 7 1980

O. C. D.  
ARTESIA, OFFICE

30-015-23170

Form C-101  
Revised 1-1-65

5A. Indicate Type of Lease
STATE <input type="checkbox"/> FEE <input checked="" type="checkbox"/>
5. State Oil & Gas Lease No.

APPLICATION FOR PERMIT TO DRILL, DEEPEN, OR PLUG BACK

1a. Type of Work		7. Unit Agreement Name	
b. Type of Well DRILL <input checked="" type="checkbox"/> DEEPEN <input type="checkbox"/> PLUG BACK <input type="checkbox"/> OIL WELL <input checked="" type="checkbox"/> GAS WELL <input type="checkbox"/> OTHER <input type="checkbox"/> SINGLE ZONE <input type="checkbox"/> MULTIPLE ZONE <input type="checkbox"/>		8. Farm or Lease Name Gissler "AV"	
2. Name of Operator Yates Petroleum Corporation		9. Well No. 16	
3. Address of Operator 207 South 4th Street, Artesia, New Mexico 88210		10. Field and Pool, or Wildcat X Eagle Creek S.A.	
4. Location of Well UNIT LETTER E LOCATED 2310 FEET FROM THE North LINE AND 330' FEET FROM THE West LINE OF SEC. 23 TWP. 17S RGE. 25E NMPM		12. County Eddy	
19. Proposed Depth approx. 1500'		19A. Formation San Andres	
20. Rotary or C.T. Rotary		21. Elevations (Show whether DF, RT, etc.) 3515.3 GL	
21A. Kind & Status Plug. Bond Blanket		21B. Drilling Contractor Cactus Drilling Co.	
22. Approx. Date Work will start Soon after approval			

23.

PROPOSED CASING AND CEMENT PROGRAM

SIZE OF HOLE	SIZE OF CASING	WEIGHT PER FOOT	SETTING DEPTH	SACKS OF CEMENT	EST. TOP
15"	10 3/4"	32#	approx. 350'	200 circulate	
9 7/8"	7"	20#	approx. 1150'	700 circulate	
6 1/4"	4 1/2" & 5 1/2"	10.5# & 15.5#	approx. 1500'	150 sacks	

Propose to drill a San Andres test. Approximately 350' of 10 3/4" casing will be run and cemented to the surface to shut off surface gravel and caving, and 7" casing will be run 100' below the Artesian Zone, cemented to the surface. A tapered oil string will be run and cemented, perforated and sand frac'd for production.

MUD PROGRAM: Fresh water mud w/LCM from surface to 1150', fresh water to total depth.

BOP PROGRAM: BOP's to be installed on 7" casing and tested daily for operational.

APPROVAL VAND  
FOR 90 DAYS UNLESS  
DRILLING COMMENCED,

EXPIRES 5-8-80

IN ABOVE SPACE DESCRIBE PROPOSED PROGRAM: IF PROPOSAL IS TO DEEPEN OR PLUG BACK, GIVE DATA ON PRESENT PRODUCTIVE ZONE AND PROPOSED NEW PRODUCTIVE ZONE. GIVE BLOWOUT PREVENTER PROGRAM, IF ANY.

I hereby certify that the information above is true and complete to the best of my knowledge and belief.

Signed Glenn Rodriguez Title Geographer Date 2/6/80

(This space for State Use)

APPROVED BY W. A. Gressett TITLE SUPERVISOR, DISTRICT II DATE FEB 8 1980

CONDITIONS OF APPROVAL, IF ANY:

Cement to be placed to  
surface behind all casing

Not to be used for production

to 7" casing

NEW MEXICO OIL CONSERVATION COMMISSION  
WELL LOCATION AND ACREAGE DEDICATION PLAT

Form C-102\*  
Supersedes C-128  
Effective 1-1-65

All distances must be from the outer boundaries of the Section.

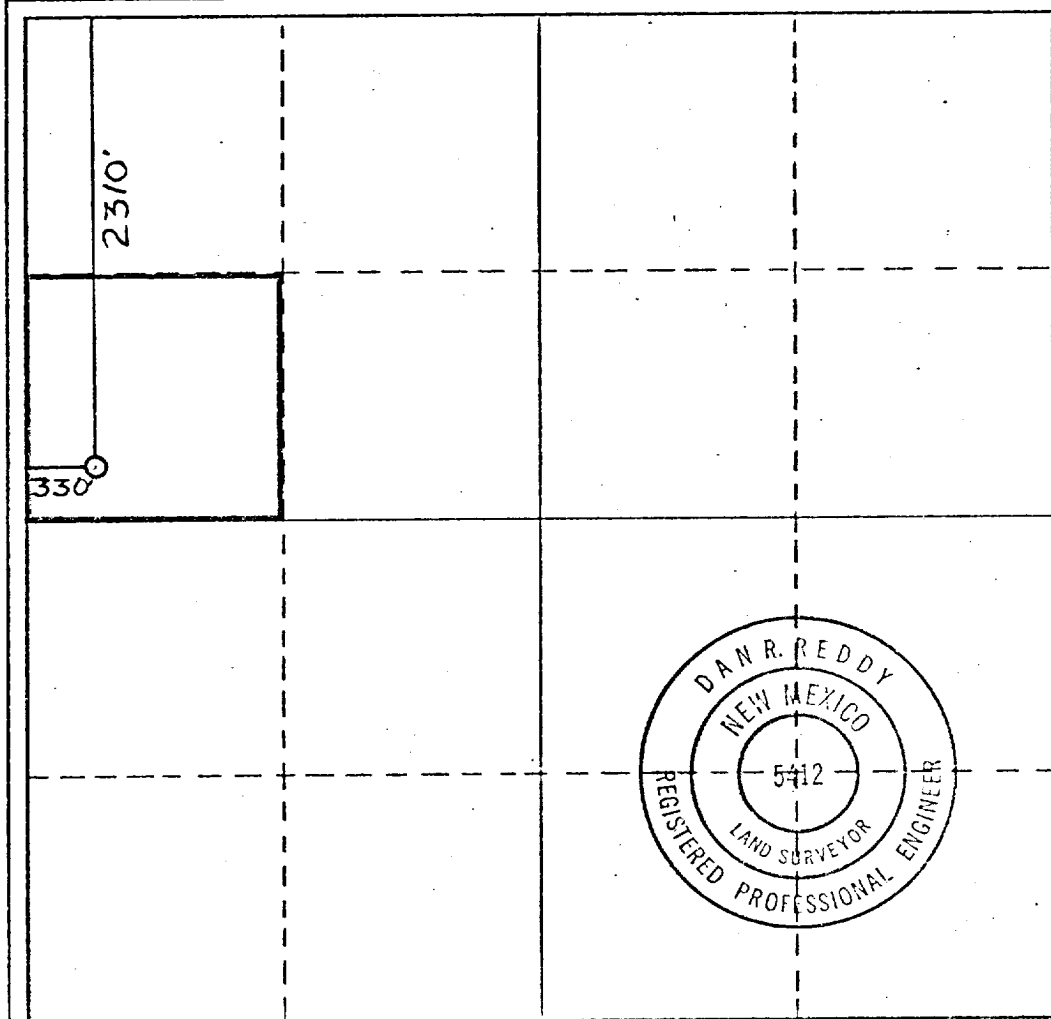
Operator <b>YATES PETROLEUM CORPORATION</b>			Lease <b>Gissler AV</b>		Well No. <b>16</b>
Unit Letter <b>E</b>	Section <b>23</b>	Township <b>17 South</b>	Range <b>25 East</b>	County <b>Eddy</b>	
Actual Footage Location of Well: <b>2310</b> feet from the <b>North</b> line and <b>330</b> feet from the <b>West</b> line					
Ground Level Elev. <b>3515.3</b>	Producing Formation <b>San Andres</b>		Pool <b>Eagle Creek S.A.</b>	Dedicated Acreage: <b>40</b> Acres	

1. Outline the acreage dedicated to the subject well by colored pencil or hachure marks on the plat below.
2. If more than one lease is dedicated to the well, outline each and identify the ownership thereof (both as to working interest and royalty).
3. If more than one lease of different ownership is dedicated to the well, have the interests of all owners been consolidated by communitization, unitization, force-pooling, etc?

☐ Yes ☐ No If answer is "yes," type of consolidation \_\_\_\_\_

If answer is "no," list the owners and tract descriptions which have actually been consolidated. (Use reverse side of this form if necessary.) \_\_\_\_\_

No allowable will be assigned to the well until all interests have been consolidated (by communitization, unitization, forced-pooling, or otherwise) or until a non-standard unit, eliminating such interests, has been approved by the Commission.



CERTIFICATION

I hereby certify that the information contained herein is true and complete to the best of my knowledge and belief.

*Gliserio Rodriguez*  
Name

**Gliserio Rodriguez**

Position  
**Geographer**

Company  
**Yates Petroleum Corp.**

Date  
**February 5, 1980**

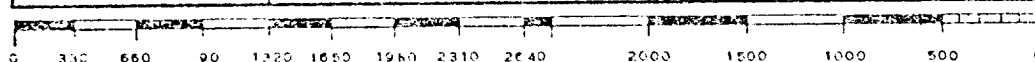
I hereby certify that the well location shown on this plat was plotted from field notes of actual surveys made by me or under my supervision, and that the same is true and correct to the best of my knowledge and belief.

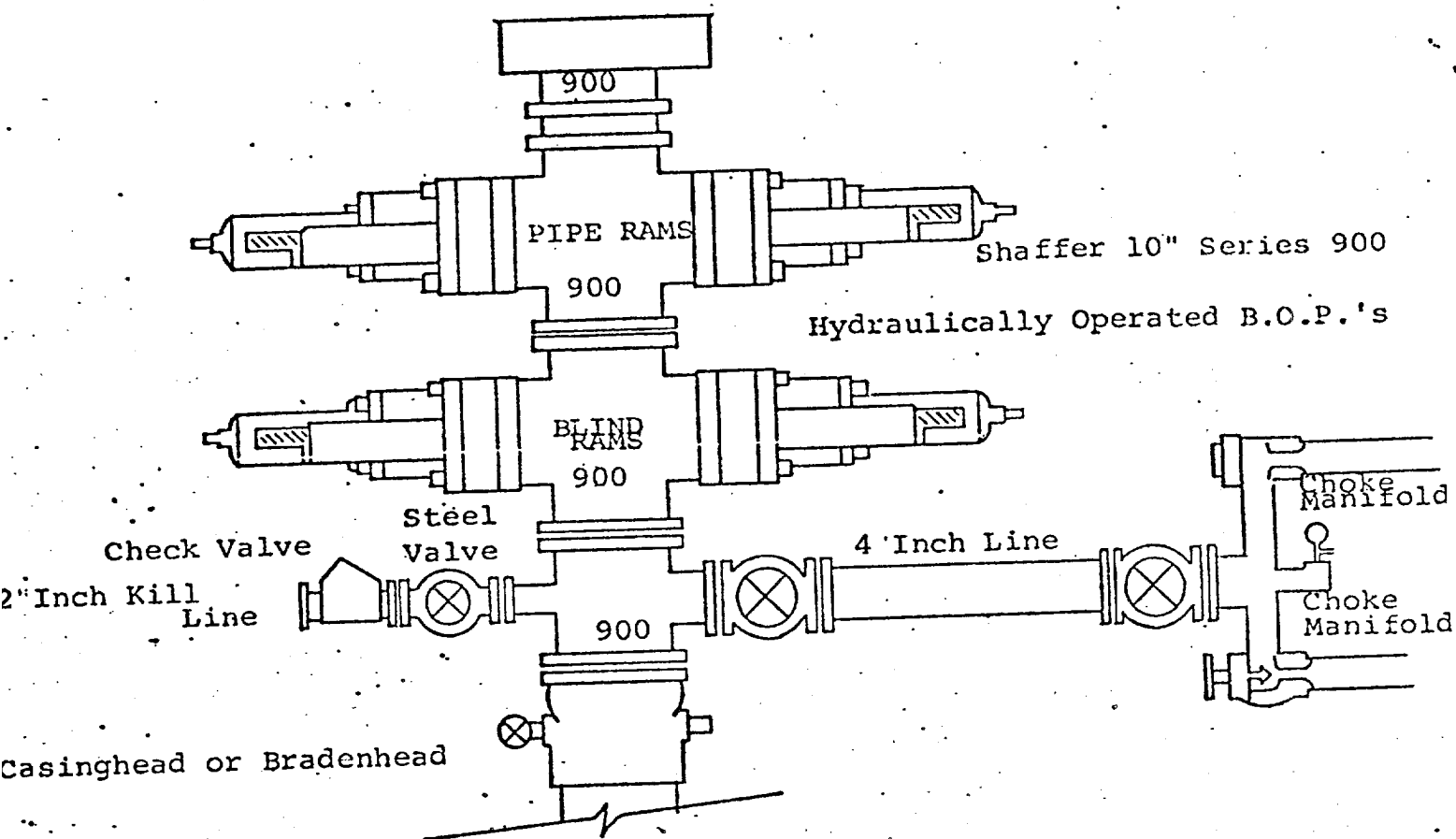
Date Surveyed  
**Nov. 5, 1979**

Registered Professional Engineer and/or Land Surveyor

*Dan R. Reddy*  
Certificate No.

**NM PE&LS #5412**





THE FOLLOWING CONSTITUTE MINIMUM BLOWOUT PREVENTER REQUIREMENTS

1. All preventers to be hydraulically operated with secondary manual controls installed prior to drilling out from under casing.
2. Choke outlet to be a minimum of 4" diameter.
3. Kill line to be of all steel construction of 2" minimum diameter.
4. All connections from operating manifolds to preventers to be all steel. hole or tube a minimum of one inch in diameter.
5. The available closing pressure shall be at least 15% in excess of that required with sufficient volume to operate the B.O.P.'s.
6. All connections to and from preventer to have a pressure rating equivalent to that of the B.O.P.'s.
7. Inside blowout preventer to be available on rig floor.
8. Operating controls located a safe distance from the rig floor.
9. Hole must be kept filled on trips below intermediate casing. Operator not responsible for blowouts resulting from not keeping hole full.
10. D. P. float must be installed and used below zone of first gas intrusion.