

30-015-23235
Form C-101
Revised 1-1-65

NEW MEXICO OIL CONSERVATION COMMISSION

NO. OF COPIES RECEIVED	5
DISTRIBUTION	
SANTA FE	1
FILE	1
U.S.G.S.	2
LAND OFFICE	
OPERATOR	1

5A. Indicate Type of Lease
STATE ☐ FEE ☒

5. State Oil & Gas Lease No.

APPLICATION FOR PERMIT TO DRILL, DEEPEN, OR PLUG BACK

1a. Type of Work
b. Type of Well
DRILL ☒ DEEPEN ☐ PLUG BACK ☐
OIL WELL ☒ GAS WELL ☐ OTHER ☐ SINGLE ZONE ☐ MULTIPLE ZONE ☐

7. Unit Agreement Name

8. Farm or Lease Name
Gissler AV

9. Well No.
19

2. Name of Operator
Yates Petroleum Corporation

10. Field and Pool, or Wildcat
Eagle Creek S.A.

3. Address of Operator
207 South 4th Street, Artesia, New Mexico 88210

4. Location of Well
UNIT LETTER F LOCATED 1650 FEET FROM THE North LINE
AND 2310 FEET FROM THE West LINE OF SEC. 23 TWP. 17S RGE. 25E NMPM

12. County
Eddy

19. Proposed Depth
approx. 1500'

19A. Formation
San Andres

20. Rotary or C.T.
Rotary

21. Elevations (Show whether DF, RT, etc.)
3507.4

21A. Kind & Status Plug. Bond
Blanket

21B. Drilling Contractor
Cactus Drilling

22. Approx. Date Work will start
Soon after approval

23. PROPOSED CASING AND CEMENT PROGRAM					
SIZE OF HOLE	SIZE OF CASING	WEIGHT PER FOOT	SETTING DEPTH	SACKS OF CEMENT	EST. TOP
15"	10 3/4"	32#	approx. 350'	200 circulate	
9 7/8"	7"	20#	approx. 1150'	700 circulate	
6 1/4"	4 1/2" & 5 1/2"	10.5# & 15.5#	approx. 1500'	150 sacks	

Propose to drill a San Andres test. Approximately 350' of 10 3/4" casing will be run and cemented to the surface to shut off surface gravel and caving, and 7" casing will be run 100' below the Artesian Zone, cemented to the surface. A tapered oil string will be run and cemented, perforated and sand frac'd for production.

MUD PROGRAM: Fresh water, mud w/LCM from surface to 1150', fresh water to total depth.

BOP PROGRAM: BOP's to be installed on 7" casing and tested daily for operational.

APPROVAL VOID
FOR 90 DAYS UNLESS
DRILLING COMMENCED,

EXPIRES 6-20-80

IN ABOVE SPACE DESCRIBE PROPOSED PROGRAM: IF PROPOSAL IS TO DEEPEN OR PLUG BACK, GIVE DATA ON PRESENT PRODUCTIVE ZONE AND PROPOSED NEW PRODUCTIVE ZONE. GIVE BLOWOUT PREVENTER PROGRAM, IF ANY.

I hereby certify that the information above is true and complete to the best of my knowledge and belief.

Signed Alvin R. [Signature] Title Geographer Date 3/14/80

(This space for State Use)

APPROVED BY W. A. Gussert TITLE SUPERVISOR, DISTRICT DATE MAR 20 1980

CONDITIONS OF APPROVAL, IF ANY:

Cement must be circulated to
surface behind all casing

Notify N.M.O.C.C. in sufficient
time to witness cementing
the 7" casing

NEW MEXICO OIL CONSERVATION COMMISSION
WELL LOCATION AND ACREAGE DEDICATION PLAT

Form C-102
Supersedes C-128
Effective 1-1-65

All distances must be from the outer boundaries of the Section.

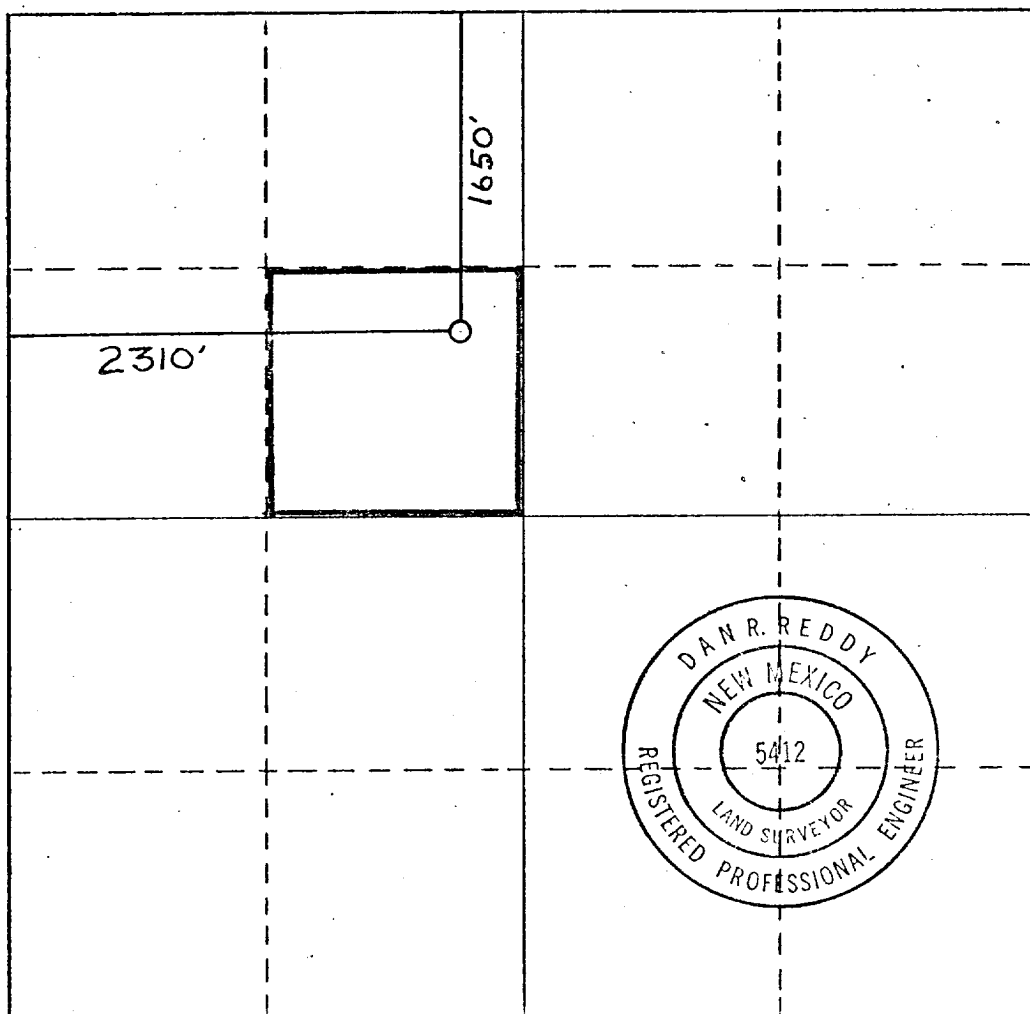
Operator YATES PETROLEUM CORPORATION			Lease Gissler AV		Well No. 19
Unit Letter F	Section 23	Township 17 South	Range 25 East	County Eddy	
Actual Footage Location of Well: 1650 feet from the North line and 2310 feet from the West line					
Ground Level Elev. 3507.4	Producing Formation San Andres		Pool Eagle Creek S.A.		Dedicated Acreage: 40 Acres

- Outline the acreage dedicated to the subject well by colored pencil or hachure marks on the plat below.
- If more than one lease is dedicated to the well, outline each and identify the ownership thereof (both as to working interest and royalty).
- If more than one lease of different ownership is dedicated to the well, have the interests of all owners been consolidated by communitization, unitization, force-pooling, etc?

☐ Yes ☐ No If answer is "yes," type of consolidation _____

If answer is "no," list the owners and tract descriptions which have actually been consolidated. (Use reverse side of this form if necessary.) _____

No allowable will be assigned to the well until all interests have been consolidated (by communitization, unitization, forced-pooling, or otherwise) or until a non-standard unit, eliminating such interests, has been approved by the Commission.



CERTIFICATION

I hereby certify that the information contained herein is true and complete to the best of my knowledge and belief.

Gliserio Rodriguez
Name

Gliserio Rodriguez

Position
Geographer

Company
Yates Petroleum Corp.

Date
February 5, 1980

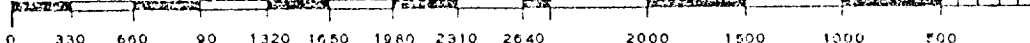
I hereby certify that the well location shown on this plat was plotted from field notes of actual surveys made by me or under my supervision, and that the same is true and correct to the best of my knowledge and belief.

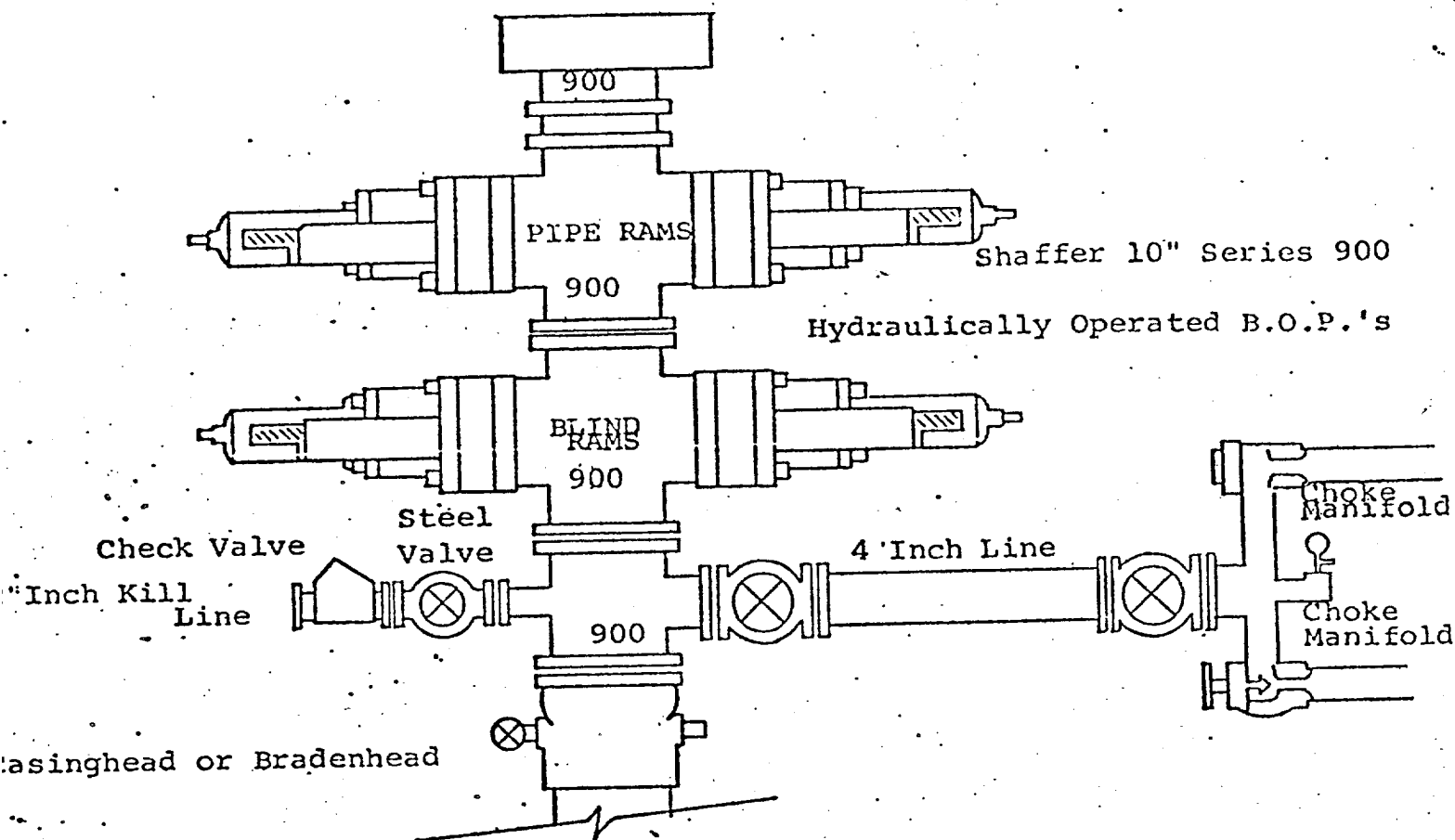
Date Surveyed
Nov. 5, 1979

Registered Professional Engineer and/or Land Surveyor

Dan R. Reddy
Certificate No.

NM PE&LS #5412





THE FOLLOWING CONSTITUTE MINIMUM BLOWOUT PREVENTER REQUIREMENTS

1. All preventers to be hydraulically operated with secondary manual controls installed prior to drilling out from under casing.
2. Choke outlet to be a minimum of 4" diameter.
3. Kill line to be of all steel construction of 2" minimum diameter.
4. All connections from operating manifolds to preventers to be all steel. hole or tube a minimum of one inch in diameter.
5. The available closing pressure shall be at least 15% in excess of that required with sufficient volume to operate the B.O.P.'s.
6. All connections to and from preventer to have a pressure rating equivalent to that of the B.O.P.'s.
7. Inside blowout preventer to be available on rig floor.
8. Operating controls located a safe distance from the rig floor.
9. Hole must be kept filled on trips below intermediate casing. Operator not responsible for blowouts resulting from not keeping hole full.
10. D. P. float must be installed and used below zone of first gas intrusion.