

NO. OF COPIES RECEIVED	
DISTRIBUTION	
SANTA FE	1
FILE	1 ✓
U.S.G.S.	2
LAND OFFICE	1
OPERATOR	1

NEW MEXICO OIL CONSERVATION COMMISSION

RECEIVED

APR 16 1980

O. C. D.
ARTESIA, OFFICE

30-015-23294

Form C-101
Revised 1-1-65

5A. Indicate Type of Lease	
STATE <input checked="" type="checkbox"/>	FEE <input type="checkbox"/>
5. State Oil & Gas Lease No.	
L-4495	

APPLICATION FOR PERMIT TO DRILL, DEEPEN, OR PLUG BACK

1a. Type of Work		7. Unit Agreement Name	
b. Type of Well OIL WELL <input type="checkbox"/> GAS WELL <input checked="" type="checkbox"/> OTHER <input type="checkbox"/>		8. Farm or Lease Name Pubco "NO" State Com	
2. Name of Operator Yates Petroleum Corporation		9. Well No. 1	
3. Address of Operator 207 South 4th Street, Artesia, New Mexico 88210		10. Field and Pool, or Wildcat Richard Knob, Undes.	
4. Location of Well UNIT LETTER J LOCATED 1980 FEET FROM THE South LINE AND 1650 FEET FROM THE East LINE OF SEC. 36 TWP. 17S RGE. 24E NMPM		12. County Eddy	
19. Proposed Depth 8370		19A. Formation Morrow	20. Rotary or C.T. Rotary
21. Elevations (Show whether DE, RT, etc.) 3656	21A. Kind & Status Plug. Bond Blanket	21B. Drilling Contractor Ard Drilling Co. (?)	22. Approx. Date Work will start ASAP

23.

PROPOSED CASING AND CEMENT PROGRAM

SIZE OF HOLE	SIZE OF CASING	WEIGHT PER FOOT	SETTING DEPTH	SACKS OF CEMENT	EST. TOP
17 1/2"	13 3/8"	48# J-55	approx. 250	250	circulate
12 1/4"	8 5/8"	24# J-55	approx. 1000'	750	circulate
7 7/8"	5 1/2 or 4 1/2	15.5 - 17 K-55	TD	250 sx	
		10.5 - 11.6#			

Propose to drill and test the Morrow and intermediate horizons. Approximately 250' of surface casing will be run and cement circulated to shut off gravel and caving. Intermediate casing will be set 100' below the Artesian Water Zone and cemented to the surface. If commercial pay is encountered, we will run 5 1/2 or 4 1/2" casing and cement with 600' of cover, perforate and stimulate as needed.

MUD PROGRAM: FW gel and LCM to 1000', fresh water to 3850', KCL water to 6000', starch-driskak KCL to 7100', flosal-driskak-KCL mud to TD. MW 8.8 - 9.0, Vis 34-39 WL 10-7.

BOP PROGRAM: BOP's and hydril on 8 5/8" casing and tested pipe rams daily for operational Yellow Jacket prior to drilling Wolfcamp (5050')

APPROVAL VALID
FOR 60 DAYS UNLESS
DRILLING COMMENCED,
EXPIRES 7-18-80

GAS NOT DEDICATED.

IN ABOVE SPACE DESCRIBE PROPOSED PROGRAM: IF PROPOSAL IS TO DEEPEN OR PLUG BACK, GIVE DATA ON PRESENT PRODUCTIVE ZONE AND PROPOSED NEW PRODUCTIVE ZONE. GIVE BLOWOUT PREVENTER PROGRAM, IF ANY.

I hereby certify that the information above is true and complete to the best of my knowledge and belief.

Signed [Signature] Title Geographer Date 4/10/80

(This space for State Use)

APPROVED BY W.A. Gressett TITLE SUPERVISOR, DISTRICT II DATE APR 18 1980

CONDITIONS OF APPROVAL, IF ANY:

Notify N.M.O.C.C. in sufficient time to witness cementing the 8 5/8" casing

surface behind 13 3/8" + 8 5/8" casing

NEW MEXICO OIL CONSERVATION COMMISSION
WELL LOCATION AND ACREAGE DEDICATION PLAT

Form C-102
Supersedes C-128
Effective 1-1-65

All distances must be from the outer boundaries of the Section.

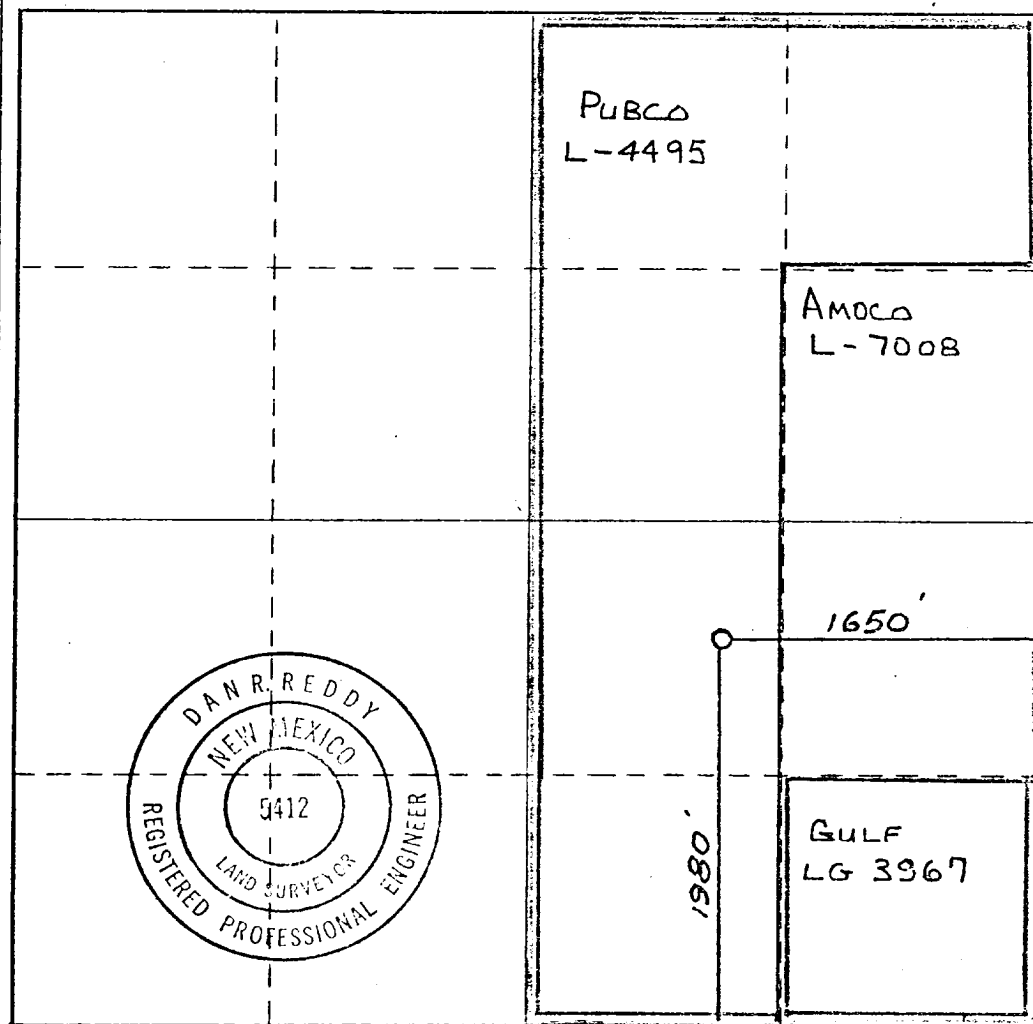
Operator YATES PETROLEUM CORPORATION			Lease Pubco NO State			Well No. 1
Unit Letter J	Section 36	Township 17 South	Range 24 East	County Eddy		
Actual Footage Location of Well: 1980 feet from the South line and 1650 feet from the East line						
Ground Level Elev. 3656.	Producing Formation MORROW		Pool RICHARD KNOR, UNDES.	Dedicated Acreage: 320 Acres		

1. Outline the acreage dedicated to the subject well by colored pencil or hatchure marks on the plat below.
2. If more than one lease is dedicated to the well, outline each and identify the ownership thereof (both as to working interest and royalty).
3. If more than one lease of different ownership is dedicated to the well, have the interests of all owners been consolidated by communitization, unitization, force-pooling, etc?

☒ Yes ☐ No If answer is "yes," type of consolidation COMMUNITIZATION

If answer is "no," list the owners and tract descriptions which have actually been consolidated. (Use reverse side of this form if necessary.) _____

No allowable will be assigned to the well until all interests have been consolidated (by communitization, unitization, forced-pooling, or otherwise) or until a non-standard unit, eliminating such interests, has been approved by the Commission.



CERTIFICATION

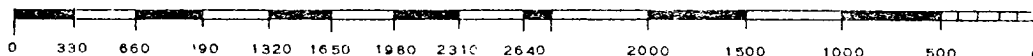
I hereby certify that the information contained herein is true and complete to the best of my knowledge and belief.

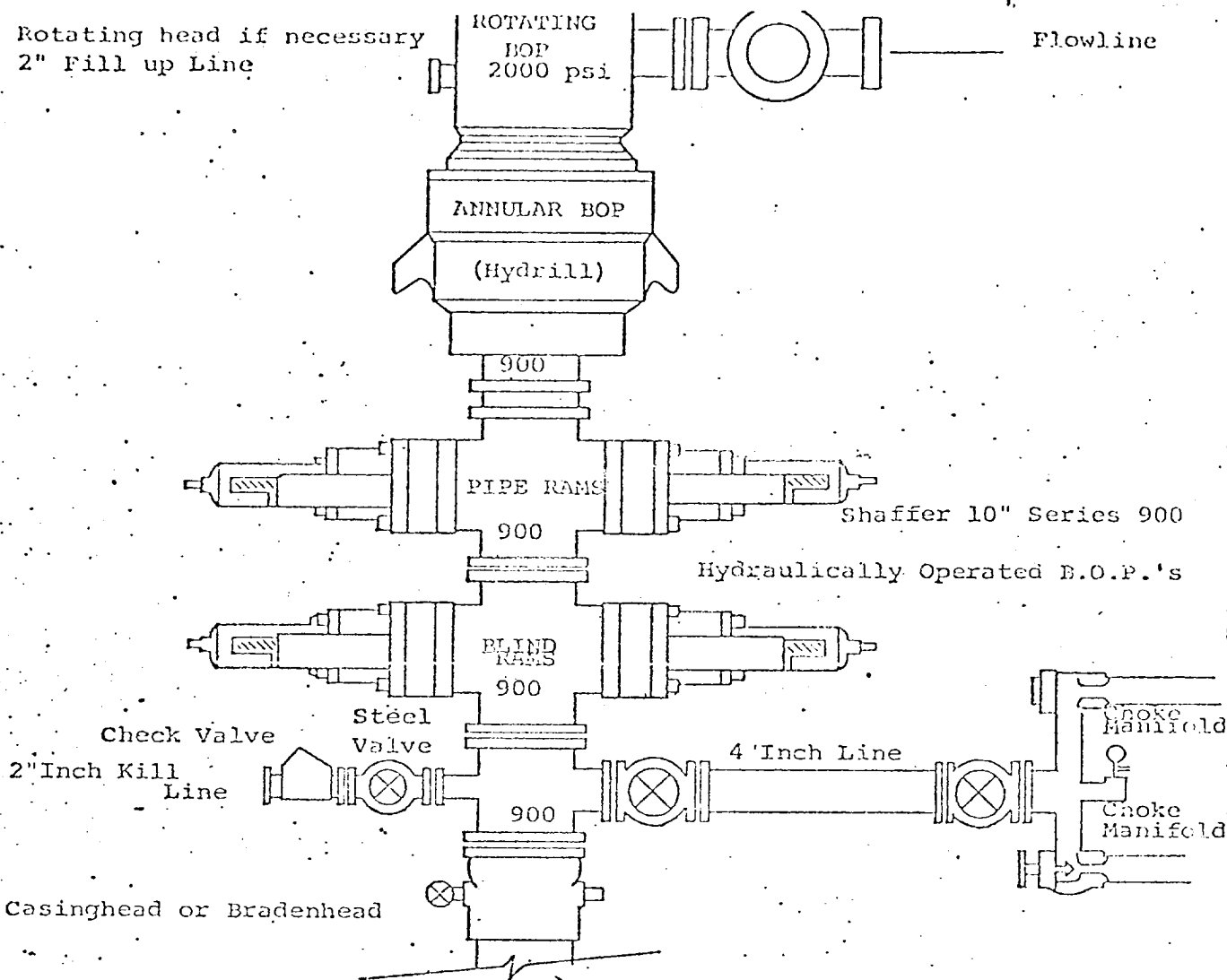
Name
Gliserio Rodriguez
Position
Geographer
Company
Yates Petroleum Corporation
Date
4/10/80

I hereby certify that the well location shown on this plat was plotted from field notes of actual surveys made by me or under my supervision, and that the same is true and correct to the best of my knowledge and belief.

Date Surveyed
April 9, 1980
Registered Professional Engineer and/or Land Surveyor

Certificate No.
NM PE&LS #5412





THE FOLLOWING CONSTITUTE MINIMUM BLOWOUT PREVENTER REQUIREMENTS

1. All preventers to be hydraulically operated with secondary manual controls installed prior to drilling out from under casing.
2. Choke outlet to be a minimum of 4" diameter.
3. Kill line to be of all steel construction of 2" minimum diameter.
4. All connections from operating manifolds to preventers to be all steel. hole or tube a minimum of one inch in diameter.
5. The available closing pressure shall be at least 15% in excess of that required with sufficient volume to operate the B.O.P.'s.
6. All connections to and from preventer to have a pressure rating equivalent to that of the B.O.P.'s.
7. Inside blowout preventer to be available on rig floor.
8. Operating controls located a safe distance from the rig floor.
9. Hole must be kept filled on trips below intermediate casing. Operator not responsible for blowouts resulting from not keeping hole full.
10. D. P. float must be installed and used below zone of first gas intrusion.