

NO. OF COPIES RECEIVED	
DISTRIBUTION	
SANTA FE	1
FILE	1 ✓
U.S.G.S.	1
LAND OFFICE	
OPERATOR	1

NEW MEXICO OIL CONSERVATION COMMISSION

RECEIVED

MAY - 1 1980

30-015-23310

Form C-101
Revised 1-1-65

5A. Indicate Type of Lease	
STATE <input type="checkbox"/>	FEE <input checked="" type="checkbox"/>
5. State Oil & Gas Lease No.	

APPLICATION FOR PERMIT TO DRILL, DEEPEN, OR PLUG BACK

1a. Type of Work		7. Unit Agreement Name	
b. Type of Well OIL WELL <input checked="" type="checkbox"/> GAS WELL <input type="checkbox"/> OTHER <input type="checkbox"/>		8. Farm or Lease Name WOLF	
2. Name of Operator Collier & Collier		9. Well No. #4	
3. Address of Operator P. O. Box 798, Artesia, New Mexico 88210		10. Field and Pool, or Wildcat East Empire Yates 7-R	
4. Location of Well UNIT LETTER M LOCATED 990 FEET FROM THE South LINE AND 990 FEET FROM THE West LINE OF SEC. 23 TWP. 17S RGE. 28E NMPM		12. County Eddy	
19. Proposed Depth 800'		19A. Formation Seven Rivers	
20. Rotary or C.T. Rotary		21. Elevations (Show whether DF, RT, etc.) 3598.4 GL	
21A. Kind & Status Plug. Bond Statewide		21B. Drilling Contractor Yucca Drilling Co. Inc.	
22. Approx. Date Work will start 5/7/80			

PROPOSED CASING AND CEMENT PROGRAM

SIZE OF HOLE	SIZE OF CASING	WEIGHT PER FOOT	SETTING DEPTH	SACKS OF CEMENT	EST. TOP
10 3/4"	8 5/8"	20#	100'	Ready mix	to surface
6 5/8"	4 1/2"	9.5#	800'	250 sacks	surface

May 7, 1980

Plan to speed Seven Rivers well using 10 3/4" bit and run 100' of 8 5/8", 20# casing and ready mix to surface with approximately 4 yards of ready mix. Will then drill out from 8 5/8" with 6 5/8" bit and reach T.D. of 800'. Will run 800' of 4 1/2", 9 1/2# casing and circulate cement to surface using 250 sacks of Class "C" cement.

APPROVAL VALID
FOR 90 DAYS UNLESS
DRILLING COMMENCED,

EXPIRES 8-5-80

IN ABOVE SPACE DESCRIBE PROPOSED PROGRAM; IF PROPOSAL IS TO DEEPEN OR PLUG BACK, GIVE DATA ON PRESENT PRODUCTIVE ZONE AND PROPOSED NEW PRODUCTIVE ZONE. GIVE BLOWOUT PREVENTER PROGRAM, IF ANY.

I hereby certify that the information above is true and complete to the best of my knowledge and belief.

Signed Phoneda Brown Title Secretary Date 4/30/80

(This space for State Use)

APPROVED BY W.A. Gessett TITLE SUPERVISOR, DISTRICT II DATE MAY - 5 1980

CONDITIONS OF APPROVAL, IF ANY:

Cement must be circulated to surface behind 8 5/8" 4 1/2" casing

Notify N.M.O.C.C. in sufficient time to witness cementing the 4 1/2" casing

N MEXICO OIL CONSERVATION COMMISS
WELL LOCATION AND ACREAGE DEDICATION . LAT

Form C-102
Supersedes C-128
Effective 1-1-65

All distances must be from the outer boundaries of the Section.

Operator COLLIER & COLLIER		Lease Wolf State		Well No. 4
Unit Letter M	Section 23	Township 17 South	Range 28 East	County Eddy
Actual Footage Location of Well: 990 feet from the South line and 990 feet from the West line				
Ground Level Elev. 3598.4	Producing Formation SEVEN RIVERS		Pool East Empire Yates 7-R	Dedicated Acreage: 40 Acres

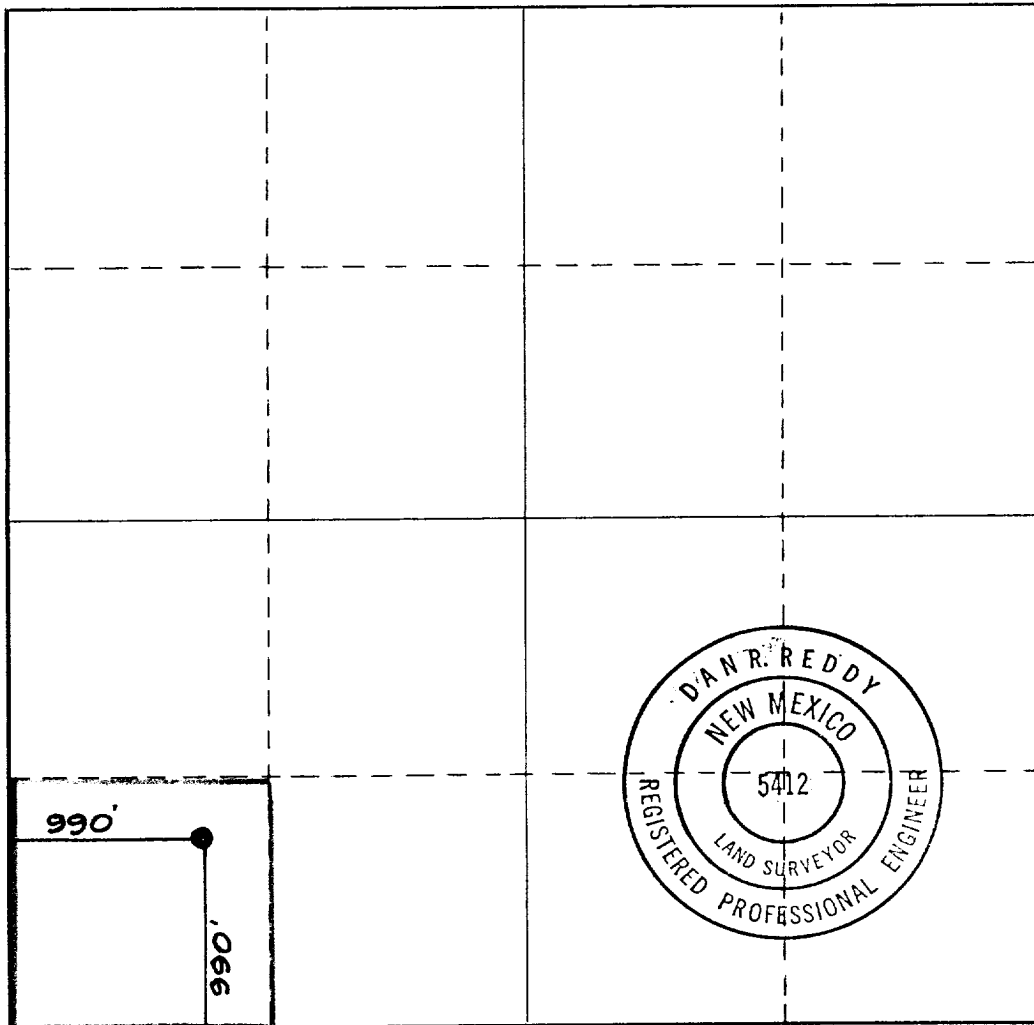
1. Outline the acreage dedicated to the subject well by colored pencil or hachure marks on the plat below.
2. If more than one lease is dedicated to the well, outline each and identify the ownership thereof (both as to working interest and royalty).
3. If more than one lease of different ownership is dedicated to the well, have the interests of all owners been consolidated by communitization, unitization, force-pooling, etc?

☐ Yes ☐ No If answer is "yes," type of consolidation O. C. D.

ARTESIA, OFFICE

If answer is "no," list the owners and tract descriptions which have actually been consolidated. (Use reverse side of this form if necessary.)

No allowable will be assigned to the well until all interests have been consolidated (by communitization, unitization, forced-pooling, or otherwise) or until a non-standard unit, eliminating such interests, has been approved by the Commission.



CERTIFICATION

I hereby certify that the information contained herein is true and complete to the best of my knowledge and belief.

Name
Brando Parrish

Position
Secretary

Company
Collier & Collier

Date
4/30/80

I hereby certify that the well location shown on this plat was plotted from field notes of actual surveys made by me or under my supervision, and that the same is true and correct to the best of my knowledge and belief.

Date Surveyed
April 26, 1980

Registered Professional Engineer and/or Land Surveyor

D. A. R. Reddy
Certificate No.

NM PE&LS #5412

