

30-015-23396

NO. OF COPIES RECEIVED	
DISTRIBUTION	
SANTA FE	1
FILE	1 ✓
U.S.G.S.	2
LAND OFFICE	
OPERATOR	1

NEW MEXICO OIL CONSERVATION COMMISSION

RECEIVED

JUL 7 1980

O.C.D.

Form C-101
Revised 1-1-65

5A. Indicate Type of Lease

STATE ☐FEE ☒

5. State Oil & Gas Lease No.

APPLICATION FOR PERMIT TO DRILL, DEEPEN, OR PLUG BACK

1a. Type of Work

DRILL ☒DEEPEN ☐PLUG BACK ☐

b. Type of Well

OIL WELL ☒GAS WELL ☐OTHER ☐SINGLE ZONE ☐MULTIPLE ZONE ☐

2. Name of Operator

Yates Petroleum Corporation ✓

3. Address of Operator

207 South 4th Street, Artesia, New Mexico 88210

4. Location of Well

UNIT LETTER F

LOCATED 2310

FEET FROM THE North

LINE

AND 1650

FEET FROM THE

West

LINE OF SEC. 22

TWP. 17S

RGE. 25E

NMPM

7. Unit Agreement Name

8. Farm or Lease Name

Jackson Estate BY

9. Well No.

10

10. Field and Pool, or Wildcat

Eagle Creek S.A.

12. County

Eddy

19. Proposed Depth

approx. 1500

19A. Formation

San Andres

20. Rotary or C.T.

Rotary

21. Elevations (Show whether DF, RT, etc.)

3538.3 GL

21A. Kind & Status Plug. Bond

Blanket

21B. Drilling Contractor

L & M Drilling Co.

22. Approx. Date Work will start

As soon as possible.

23.

PROPOSED CASING AND CEMENT PROGRAM

SIZE OF HOLE	SIZE OF CASING	WEIGHT PER FOOT	SETTING DEPTH	SACKS OF CEMENT	EST. TOP
15"	10 3/4"	32#	approx. 320'	350 sx.	circulate
9 1/2"	7"	20#	approx. 1150'	850 sx.	circulate
6 1/4"	4 1/2" & 5 1/2"	10.5 & 15.5#	TD		circulate

Propose to drill a San Andres test. Approximately 320' of 10 3/4" casing will be run if needed, and cemented to the surface to shut off surface gravel and cavings, 7" casing will be run 100' below the Artesian Zone, cemented to surface. A tapered string of production casing will be run and cemented, perforated and San frac'd for completion.

MUD PROGRAM: Fresh water mud w/LCM from surface to 1150', fresh water to total depth.

BOP PROGRAM: BOP's to be installed on 7" casing and tested daily.

APPROVAL VALID
FOR 90 DAYS UNLESS
DRILLING COMMENCED,

EXPIRES 10-8-80

IN ABOVE SPACE DESCRIBE PROPOSED PROGRAM: IF PROPOSAL IS TO DEEPEN OR PLUG BACK, GIVE DATA ON PRESENT PRODUCTIVE ZONE AND PROPOSED NEW PRODUCTIVE ZONE. GIVE BLOWOUT PREVENTER PROGRAM, IF ANY.

I hereby certify that the information above is true and complete to the best of my knowledge and belief.

Signed [Signature] Title Geographer Date July 7, 1980

(This space for State Use)

APPROVED BY [Signature] TITLE OIL AND GAS INSPECTOR DATE JUL 8 1980

CONDITIONS OF APPROVAL, IF ANY:

Cement must be circulated to
surface behind 10 3/4" & 7" casing

Notify N.M.O.C.C. in sufficient time to witness

Cementing 7"

NEW MEXICO OIL CONSERVATION COMMISSION
WELL LOCATION AND ACREAGE DEDICATION PLAT

Form C-102
Supersedes C-128
Effective 1-1-65

All distances must be from the outer boundaries of the Section.

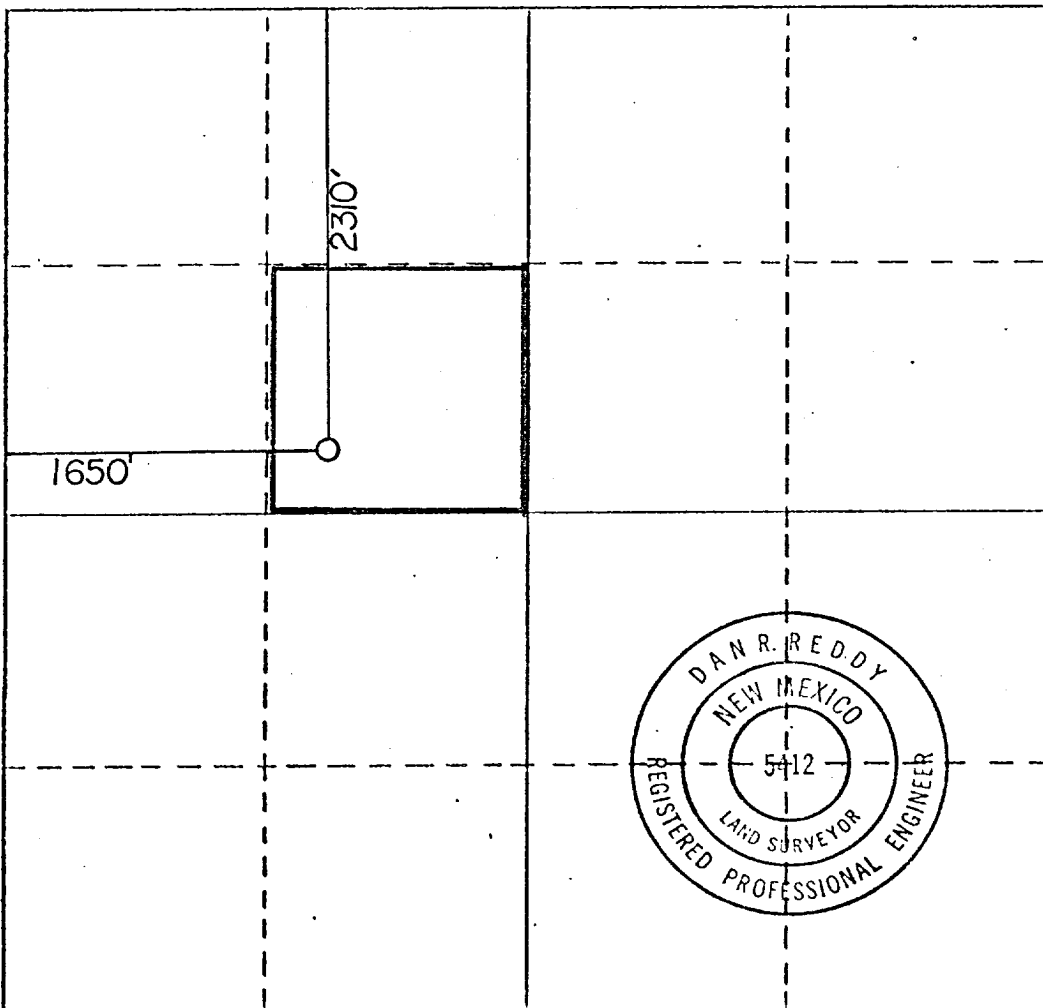
Operator YATES PETROLEUM CORPORATION		Lease Jackson Estate BY		Well No. 10
Unit Letter F	Section 22	Township 17 South	Range 25 East	County Eddy
Actual Footage Location of Well: 2310 feet from the North line and 1650 feet from the West line				
Ground Level Elev. 3538.3	Producing Formation San Andres	Pool Eagle Creek S.A.	Dedicated Acreage: 40 Acres	

1. Outline the acreage dedicated to the subject well by colored pencil or hatchure marks on the plat below.
2. If more than one lease is dedicated to the well, outline each and identify the ownership thereof (both as to working interest and royalty).
3. If more than one lease of different ownership is dedicated to the well, have the interests of all owners been consolidated by communitization, unitization, force-pooling, etc?

☐ Yes ☐ No If answer is "yes," type of consolidation _____

If answer is "no," list the owners and tract descriptions which have actually been consolidated. (Use reverse side of this form if necessary.) _____

No allowable will be assigned to the well until all interests have been consolidated (by communitization, unitization, forced-pooling, or otherwise) or until a non-standard unit, eliminating such interests, has been approved by the Commission.



CERTIFICATION

I hereby certify that the information contained herein is true and complete to the best of my knowledge and belief.

Gliserio Rodriguez
Name
Gliserio Rodriguez

Position
Geographer

Company
Yates Petroleum Corp.

Date
February 5, 1980

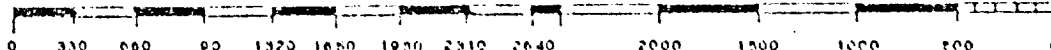
I hereby certify that the well location shown on this plat was plotted from field notes of actual surveys made by me or under my supervision, and that the same is true and correct to the best of my knowledge and belief.

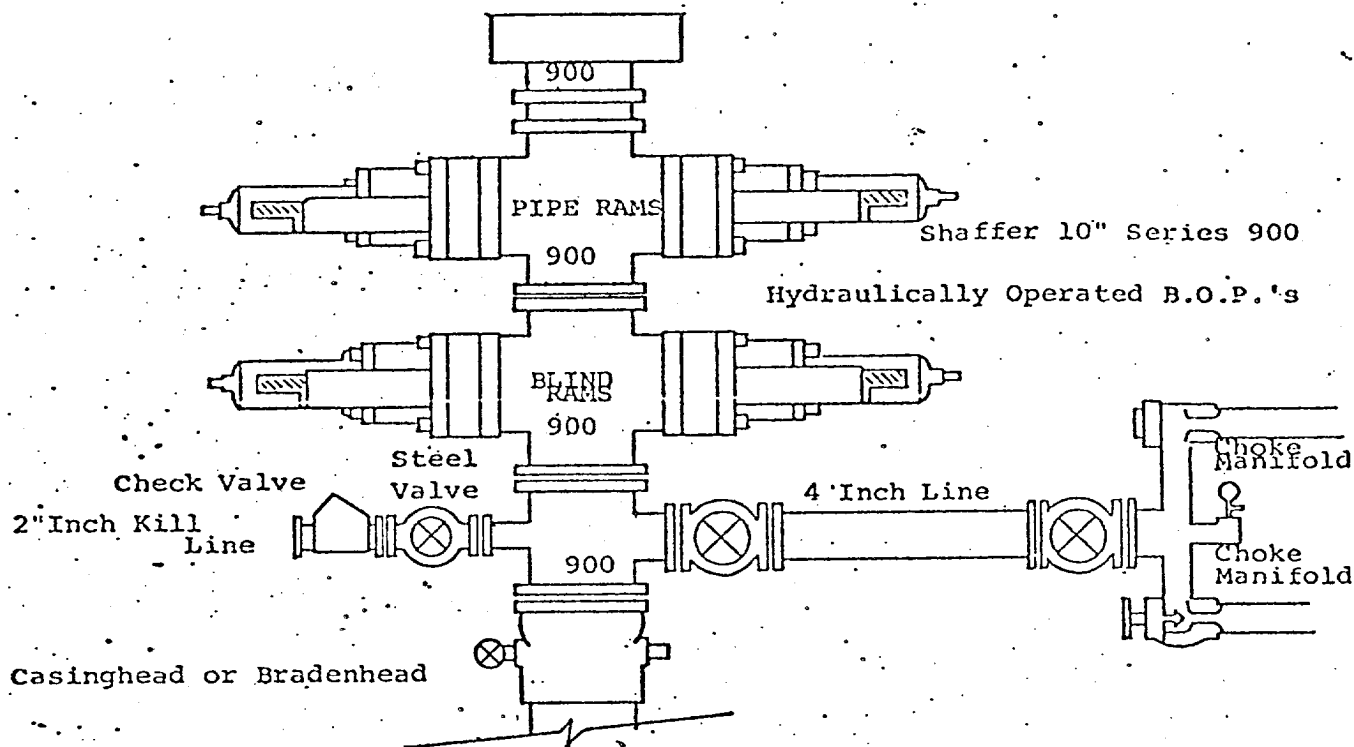
Date Surveyed
Nov. 1, 1979

Registered Professional Engineer and/or Land Surveyor

Dan R. Reddy

Certificate No.
NM PE&LS #5412





THE FOLLOWING CONSTITUTE MINIMUM BLOWOUT PREVENTER REQUIREMENTS

1. All preventers to be hydraulically operated with secondary manual controls installed prior to drilling out from under casing.
2. Choke outlet to be a minimum of 4" diameter.
3. Kill line to be of all steel construction of 2" minimum diameter.
4. All connections from operating manifolds to preventers to be all steel. hole or tube a minimum of one inch in diameter.
5. The available closing pressure shall be at least 15% in excess of that required with sufficient volume to operate the B.O.P.'s.
6. All connections to and from preventer to have a pressure rating equivalent to that of the B.O.P.'s.
7. Inside blowout preventer to be available on rig floor.
8. Operating controls located a safe distance from the rig floor.
9. Hole must be kept filled on trips below intermediate casing. Operator not responsible for blowouts resulting from not keeping hole full.
10. D. P. float must be installed and used below zone of first gas intrusion.