

NO. OF COPIES RECEIVED		
DISTRIBUTION		
SANTA FE	1	
FILE	1	✓
U.S.G.S.	2	
LAND OFFICE		
OPERATOR	1	

NEW MEXICO OIL CONSERVATION COMMISSION
RECEIVED

JUL 7 1980

O. C. D.

Form C-101
Revised 1-1-65

400
30-015-23

5A. Indicate Type of Lease	
STATE <input type="checkbox"/>	FEE <input checked="" type="checkbox"/>
5. State Oil & Gas Lease No.	
7. Unit Agreement Name	
8. Farm or Lease Name	
Gissler AV	
9. Well No.	
21	
10. Field and Pool, or Wildcat	
Eagle Creek S.A.	
12. County	
Eddy	
19. Proposed Depth	19A. Formation
approx. 1500	San Andres
20. Rotary or C.T.	
Rotary	
21. Elevations (show whether DT, RT, etc.)	21A. Kind & Status Plug. Bond
3512.4	Blanket
21B. Drilling Contractor	22. Approx. Date Work will start
L & M Drilling Co.	As soon as approved

APPLICATION FOR PERMIT TO DRILL, DEEPEN, OR PLUG BACK

1a. Type of Work	
b. Type of Well	
DRILL <input checked="" type="checkbox"/>	DEEPEN <input type="checkbox"/>
OIL WELL <input checked="" type="checkbox"/>	GAS WELL <input type="checkbox"/>
OTHER <input type="checkbox"/>	
2. Name of Operator	
Yates Petroleum Corporation	
3. Address of Operator	
207 S. 4th Street, Artesia, New Mexico 88210	
4. Location of Well	
UNIT LETTER E	LOCATED 1980
FEET FROM THE North LINE	
AND 660	FEET FROM THE West LINE OF SEC. 23 TWP. 17S RGE. 25E NMPM
19. Proposed Depth	
approx. 1500	
19A. Formation	
San Andres	
20. Rotary or C.T.	
Rotary	
21. Elevations (show whether DT, RT, etc.)	21A. Kind & Status Plug. Bond
3512.4	Blanket
21B. Drilling Contractor	22. Approx. Date Work will start
L & M Drilling Co.	As soon as approved

23.

PROPOSED CASING AND CEMENT PROGRAM

SIZE OF HOLE	SIZE OF CASING	WEIGHT PER FOOT	SETTING DEPTH	SACKS OF CEMENT	EST. TOP
15"	10 3/4"	32#	approx. 320'	350	circulate
9 1/2"	7"	20#	approx. 1150'	850	circulate
6 1/4"	4 1/2 & 5 1/2	10.5 & 15.5#	TD		circulate

Propose to drill a San Andres test. Approximately 320' of 10 3/4" casing will be run if needed, and cemented to the surface to shut off surface gravel and cavings, 7" casing will be run 100' below the Artesian Zone, cemented to surface. A tampered string of production casing will be run and cemented, perforated and San frac'd for completion.

MUD PROGRAM: Fresh water mud w/LCM from surface to 1150', fresh water to total depth

BOP PROGRAM: BOP's to be installed on 7" casing and tested daily.

APPROVAL VALID
FOR 90 DAYS UNLESS
DRILLING COMMENCED,

EXPIRES 10-8-80

IN ABOVE SPACE DESCRIBE PROPOSED PROGRAM: IF PROPOSAL IS TO DEEPEN OR PLUG BACK, GIVE DATA ON PRESENT PRODUCTIVE ZONE AND PROPOSED NEW PRODUCTIVE ZONE. GIVE BLOWOUT PREVENTER PROGRAM, IF ANY.

I hereby certify that the information above is true and complete to the best of my knowledge and belief.

Signed [Signature] Title Geographer Date July 3, 1980

(This space for State Use)

APPROVED BY [Signature] TITLE OIL AND GAS INSPECTOR DATE JUL 8 1980

CONDITIONS OF APPROVAL, IF ANY:

Cement must be circulated to
surface behind 10 3/4" & 7" casing

Notify N.M.O.C.C. in sufficient time to witness
Cementing 7"

**NEW MEXICO OIL CONSERVATION COMMISSION
WELL LOCATION AND ACREAGE DEDICATION PLAT**

Form C-102
Supersedes C-128
Effective 1-1-65

All distances must be from the outer boundaries of the Section.

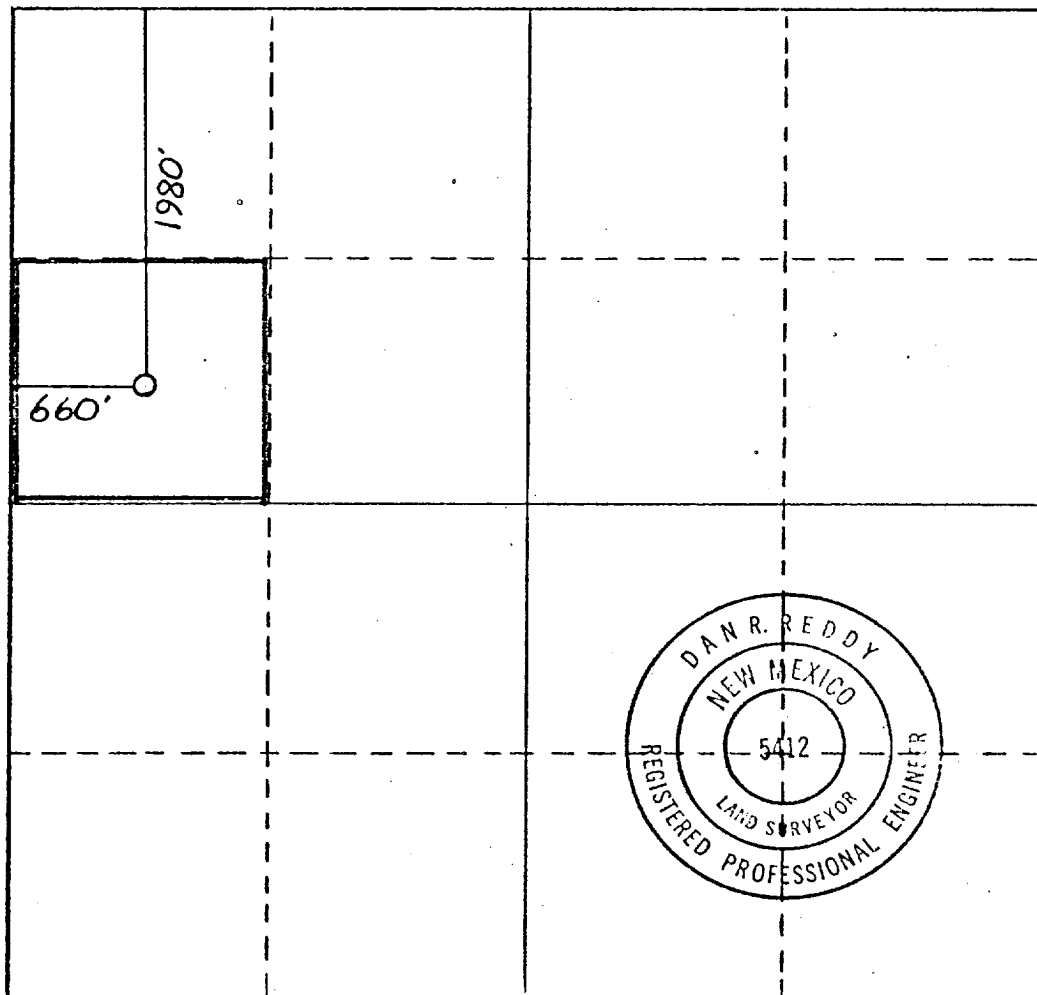
Operator YATES PETROLEUM CORPORATION			Lease Gissler AV		Well No. 21
Unit Letter E	Section 23	Township 17 South	Range 25 East	County Eddy	
Actual Footage Location of Well: 1980 feet from the North line and 660 feet from the West line					
Ground Level Elev. 3512.4	Producing Formation San Andres		Pool Eagle Creek S.A.	Dedicated Acreage: 40 Acres	

1. Outline the acreage dedicated to the subject well by colored pencil or hachure marks on the plat below.
2. If more than one lease is dedicated to the well, outline each and identify the ownership thereof (both as to working interest and royalty).
3. If more than one lease of different ownership is dedicated to the well, have the interests of all owners been consolidated by communitization, unitization, force-pooling, etc?

☐ Yes ☐ No If answer is "yes," type of consolidation _____

If answer is "no," list the owners and tract descriptions which have actually been consolidated. (Use reverse side of this form if necessary.) _____

No allowable will be assigned to the well until all interests have been consolidated (by communitization, unitization, forced-pooling, or otherwise) or until a non-standard unit, eliminating such interests, has been approved by the Commission.



CERTIFICATION

I hereby certify that the information contained herein is true and complete to the best of my knowledge and belief.

Gliserio Rodriguez

Name
Gliserio Rodriguez

Position
Geographer

Company
Yates Petroleum Corp.

Date
February 5, 1980

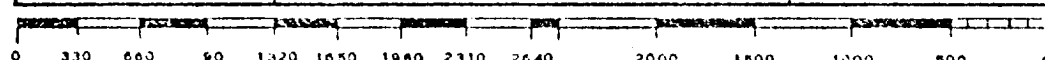
I hereby certify that the well location shown on this plat was plotted from field notes of actual surveys made by me or under my supervision, and that the same is true and correct to the best of my knowledge and belief.

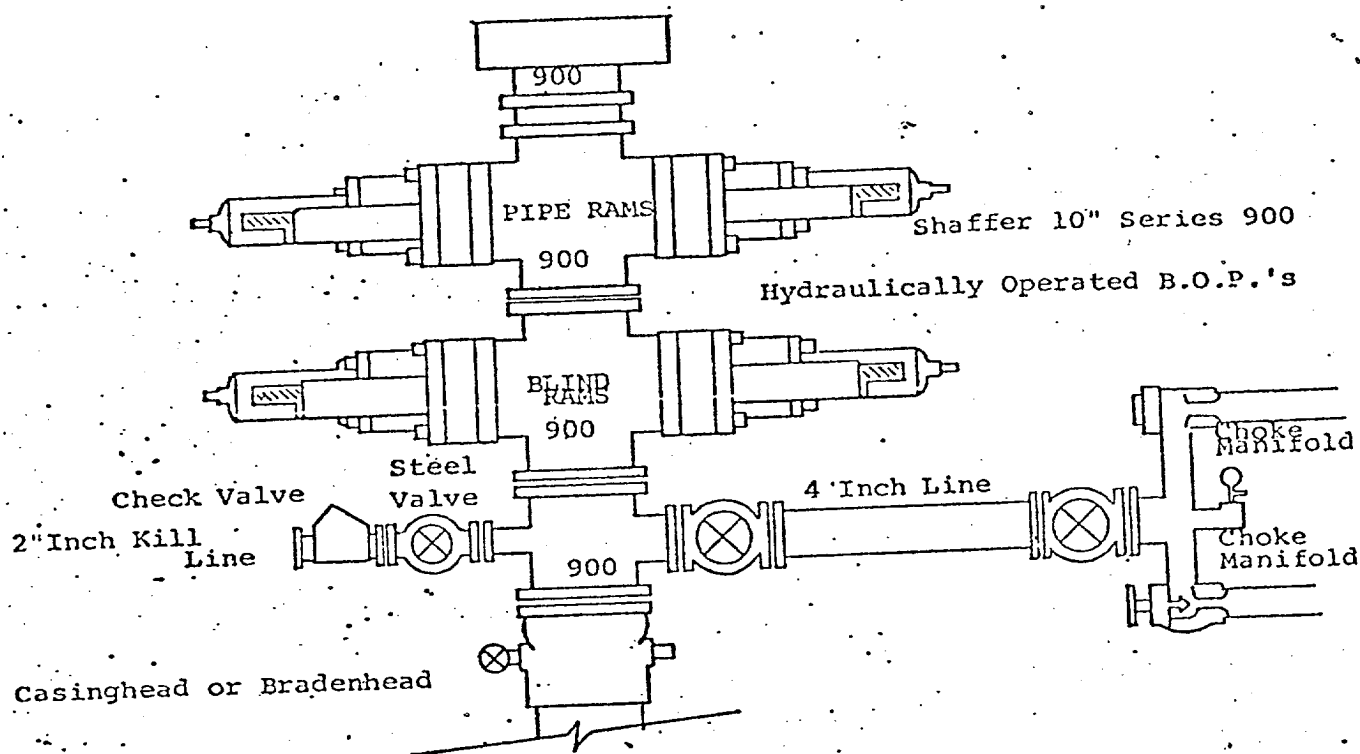
Date Surveyed
Nov. 5, 1979

Registered Professional Engineer and/or Land Surveyor

Dan R. Reddy

Certificate No.
NM PE&LS #5412





THE FOLLOWING CONSTITUTE MINIMUM BLOWOUT PREVENTER REQUIREMENTS

1. All preventers to be hydraulically operated with secondary manual controls installed prior to drilling out from under casing.
2. Choke outlet to be a minimum of 4" diameter.
3. Kill line to be of all steel construction of 2" minimum diameter.
4. All connections from operating manifolds to preventers to be all steel. hole or tube a minimum of one inch in diameter.
5. The available closing pressure shall be at least 15% in excess of that required with sufficient volume to operate the B.O.P.'s.
6. All connections to and from preventer to have a pressure rating equivalent to that of the B.O.P.'s.
7. Inside blowout preventer to be available on rig floor.
8. Operating controls located a safe distance from the rig floor.
9. Hole must be kept filled on trips below intermediate casing. Operator not responsible for blowouts resulting from not keeping hole full.
10. D. P. float must be installed and used below zone of first gas intrusion.