

NO. OF COPIES RECEIVED	6
DISTRIBUTION	
SANTA FE	1
FILE	1
U.S.G.S.	2
LAND OFFICE	1
OPERATOR	1

RECEIVED
NEW MEXICO OIL CONSERVATION COMMISSION

AUG 21 1980

O. C. D.
ARTESIA, OFFICE

30-015-23453

Form C-101
Revised 1-1-65

5A. Indicate Type of Lease	
STATE <input checked="" type="checkbox"/>	FEE <input type="checkbox"/>
5. State Oil & Gas Lease No. B-1111	

APPLICATION FOR PERMIT TO DRILL, DEEPEN, OR PLUG BACK

1a. Type of Work		7. Unit Agreement Name	
b. Type of Well OIL WELL <input checked="" type="checkbox"/> GAS WELL <input type="checkbox"/> OTHER <input type="checkbox"/>		8. Farm or Lease Name State B-1111, Tr. 2	
2. Name of Operator Collier Energy, Inc. ✓		9. Well No. #14	
3. Address of Operator P. O. Box 798, Artesia, New Mexico 88210		10. Field and Pool, or Wildcat East Empire Yates 7-R	
4. Location of Well UNIT LETTER <u>G</u> LOCATED <u>1650</u> FEET FROM THE <u>North</u> LINE AND <u>1650</u> FEET FROM THE <u>East</u> LINE OF SEC. <u>22</u> TWP. <u>17S</u> RGE. <u>28E</u> NMPM		12. County Eddy	
19. Proposed Depth 800'		19A. Formation Seven Rivers	
20. Rotary or C.T. Rotary		21. Elevations (Show whether DF, RT, etc.) 3582 GL	
21A. Kind & Status Plug. Bond Statewide		21B. Drilling Contractor Yucca Drilling Co.	
22. Approx. Date Work will start August 27, 1980			

23.

PROPOSED CASING AND CEMENT PROGRAM

SIZE OF HOLE	SIZE OF CASING	WEIGHT PER FOOT	SETTING DEPTH	SACKS OF CEMENT	EST. TOP
7 7/8"	4 1/2"	9 1/2#	800'	250 sxs.	Surface

August 27, 1980: Plan to drill Seven Rivers well using 7 7/8" bit and reach T.D. at approximately 800'.

August 28, 1980: Plan to run 800' of 4 1/2", 9 1/2# casing and circulate with 250 sacks of Class "C" cement to surface.

APPROVAL VALID
FOR 90 DAYS UNLESS
DRILLING COMMENCED,

EXPIRES 11-28-80

IN ABOVE SPACE DESCRIBE PROPOSED PROGRAM: IF PROPOSAL IS TO DEEPEN OR PLUG BACK, GIVE DATA ON PRESENT PRODUCTIVE ZONE AND PROPOSED NEW PRODUCTIVE ZONE. GIVE BLOWOUT PREVENTER PROGRAM, IF ANY.

hereby certify that the information above is true and complete to the best of my knowledge and belief.

Signed Rhonda Parrish Title Secretary Date 8-21-80

(This space for State Use)

APPROVED BY W. A. Gressett TITLE SUPERVISOR, DISTRICT II DATE AUG 28 1980

CONDITIONS OF APPROVAL, IF ANY:

Cement must be circulated to
surface behind 4 1/2" casing

Notify N.M.O.C.C. in sufficient
time to witness cementing

NEW MEXICO OIL CONSERVATION COMMISSION
WELL LOCATION AND ACREAGE DEDICATION PLAT

Form C-102
Supersedes C-128
Effective 1-1-65

All distances must be from the outer boundaries of the Section.

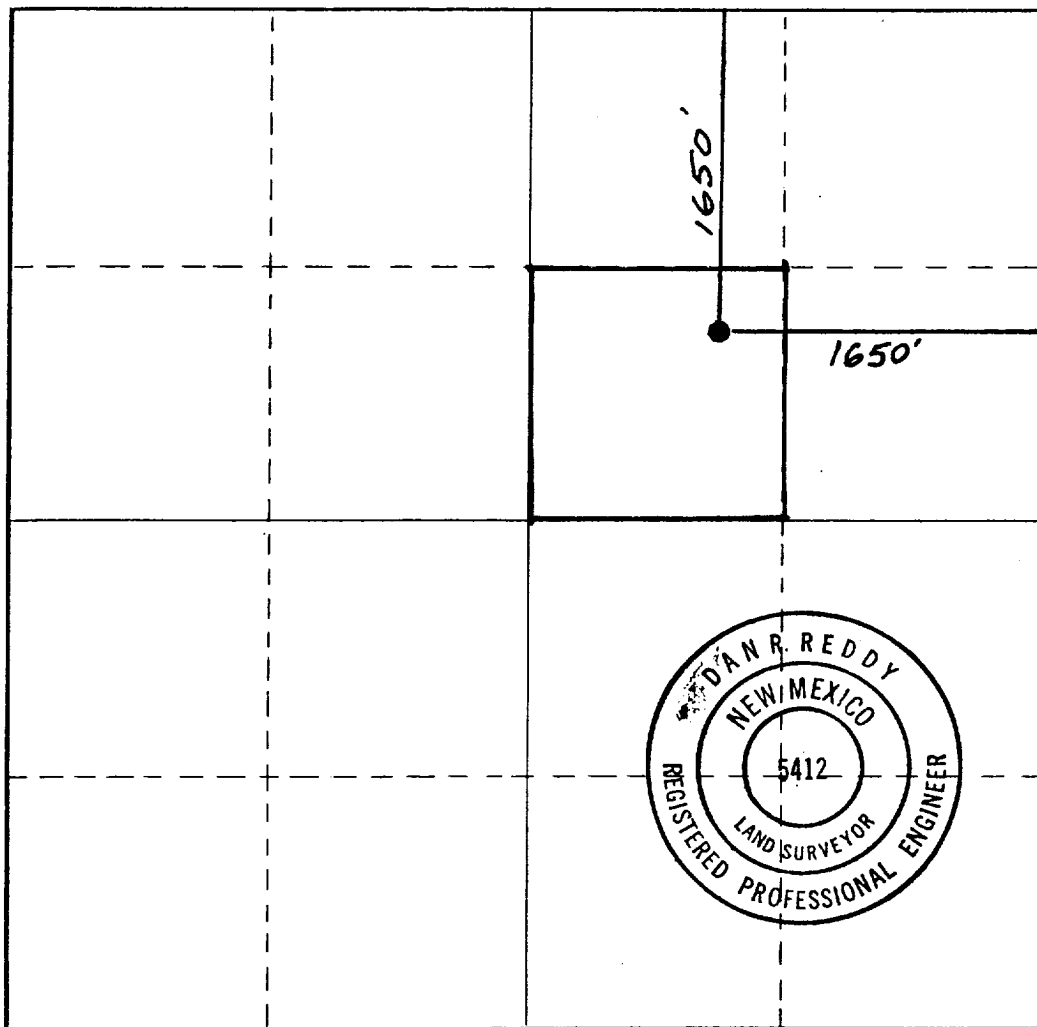
Operator COLLIER ENERGY INC.			Lease State B-1111, Tr. 2		Well No. #14
Unit Letter G	Section 22	Township 17 South	Range 28 East	County Eddy	
Actual Footage Location of Well: 1650 feet from the North line and 1650 feet from the East line					
Ground Level Elev: 3582.	Producing Formation Seven Rivers		Pool East Empire Yates Seven Rivers		Dedicated Acreage: 40 Acres

1. Outline the acreage dedicated to the subject well by colored pencil or hachure marks on the plat below.
2. If more than one lease is dedicated to the well, outline each and identify the ownership thereof (both as to working interest and royalty).
3. If more than one lease of different ownership is dedicated to the well, have the interests of all owners been consolidated by communitization, unitization, force-pooling, etc?

☐ Yes ☐ No If answer is "yes," type of consolidation _____

If answer is "no," list the owners and tract descriptions which have actually been consolidated. (Use reverse side of this form if necessary.) _____

No allowable will be assigned to the well until all interests have been consolidated (by communitization, unitization, forced-pooling, or otherwise) or until a non-standard unit, eliminating such interests, has been approved by the Commission.



CERTIFICATION

I hereby certify that the information contained herein is true and complete to the best of my knowledge and belief.

Rhonda Parrish

Name

Rhonda Parrish

Position

Secretary

Company

Collier Energy, Inc.

Date

8-21-80

I hereby certify that the well location shown on this plat was plotted from field notes of actual surveys made by me or under my supervision, and that the same is true and correct to the best of my knowledge and belief.

Date Surveyed

August 13, 1980

Registered Professional Engineer and/or Land Surveyor

Dan R. Reddy

Certificate No.

NM PE&LS #5412

0 330 660 990 1320 1650 1980 2310 2640 2000 1500 1000 500 0