

SEP 9 1980

UNITED STATES  
DEPARTMENT OF THE INTERIORSUBMIT IN TRIPLICATE\*  
(Other instructions on  
reverse side)Form approved.  
Budget Bureau No. 42-R1425.

O. C. D.

GEOLOGICAL SURVEY

ARTESIA, OFFICE

## APPLICATION FOR PERMIT TO DRILL, DEEPEN, OR PLUG BACK

5. LEASE DESIGNATION AND SERIAL NO.

NM 17216

6. IF INDIAN, ALLOTTEE OR TRIBE NAME

7. UNIT AGREEMENT NAME

8. FARM OR LEASE NAME

Peterson Federal

9. WELL NO.

1

10. FIELD AND POOL, OR WILDCAT

X Wildcat SA

11. SEC., T., R., M., OR BLK.  
AND SURVEY OR AREA

24, T16S, R27E, NMPM

12. COUNTY OR PARISH

Eddy

13. STATE

NM

1a. TYPE OF WORK

DRILL ☒DEEPEN ☐PLUG BACK ☐

b. TYPE OF WELL

OIL  
WELL ☒GAS  
WELL ☐

OTHER

SINGLE  
ZONE ☒MULTIPLE  
ZONE ☐

2. NAME OF OPERATOR

WILLIAM

W. G. MCCOY

3. ADDRESS OF OPERATOR

P.O. BOX 1352 ROSWELL, NM 88201

4. LOCATION OF WELL (Report location clearly and in accordance with any State regulations.)

At surface

1980 ft. from South and West Lines,

At proposed prod. zone

Same

14. DISTANCE IN MILES AND DIRECTION FROM NEAREST TOWN OR POST OFFICE\*

9 miles one Artesia, NM

15. DISTANCE FROM PROPOSED\*

LOCATION TO NEAREST

PROPERTY OR LEASE LINE, FT.

(Also to nearest drlg. unit line, if any)

660 ft.

16. NO. OF ACRES IN LEASE

2193.77

18. DISTANCE FROM PROPOSED LOCATION\*  
TO NEAREST WELL, DRILLING, COMPLETED,  
OR APPLIED FOR, ON THIS LEASE, FT.

3100'

19. PROPOSED DEPTH

1800'

17. NO. OF ACRES ASSIGNED  
TO THIS WELL

40

20. ROTARY OR CABLE TOOLS

Cable tools

21. ELEVATIONS (Show whether DF, RT, GR, etc.)

3557 G.L.

22. APPROX. DATE WORK WILL START\*

On Approval

23.

## PROPOSED CASING AND CEMENTING PROGRAM

SIZE OF HOLE	SIZE OF CASING	WEIGHT PER FOOT	SETTING DEPTH	QUANTITY OF CEMENT
11"	8-5/8"	24#	350	etc. Sat
8"	4-1/2"	10.5#	1800	Circulated to surface

It is proposed to drill this well with cabel tools to a depth of approximately 1800 feet. The 7-Rivers, Queen and Grayburg, San Andres formations will be tested. If shallow fresh water is encountered (400 feet or less) 8-5/8" casing will be run and cemented to surface. If brackish or salt water is encountered below 400 feet a 7" water string will be run and set. If the well is non-productive the 7" will be pulled. If the well is productive 4-1/2" casing will be run and if no surface casing was cemented cement will be circulated back to surface.

IN ABOVE SPACE DESCRIBE PROPOSED PROGRAM: If proposal is to deepen or plug back, give data on present productive zone and proposed new productive zone. If proposal is to drill or deepen directionally, give pertinent data on subsurface locations and measured and true vertical depths. Give blowout preventer program, if any.

24. SIGNED W. G. McCoy TITLE Operator DATE August 15, 1980

(This space for Federal or State office use)

PERMIT NO.

APPROVAL DATE

APPROVED BY

(Orig. Sig.) PETER W. CHESTER

TITLE

ACTING DISTRICT ENGINEER

DATE

SEP 4 1980

CONDITIONS OF APPROVAL, IF ANY:

Spouses names are to be deleted from bonds of Peterson and Anderson.

\*See Instructions On Reverse Side

## Instructions

**General:** This form is designed for submitting proposals to perform certain well operations, as indicated, on all types of lands and leases for appropriate action by either a Federal or a State agency, or both, pursuant to applicable Federal and/or State laws and regulations. Any necessary special instructions concerning the use of this form and the number of copies to be submitted, particularly with regard to local, area, or regional procedures and practices, either are shown below or will be issued by, or may be obtained from, the local Federal and/or State office.

**Item 1:** If the proposal is to redrill to the same reservoir at a different subsurface location or to a new reservoir, use this form with appropriate notations. Consult applicable State or Federal regulations concerning subsequent work proposals or reports on the well.

**Item 4:** If there are no applicable State requirements, locations on Federal or Indian land should be described in accordance with Federal requirements. Consult local State or Federal office for specific instructions.

**Item 14:** Needed only when location of well cannot readily be found by road from the land or lease description. A plat, or plats, separate or on this reverse side, showing the roads to, and the surveyed location of, the well, and any other required information, should be furnished when required by Federal or State agency offices.

**Items 15 and 18:** If well is to be, or has been directionally drilled, give distances for subsurface location of hole in any present or objective production zone.

**Item 22:** Consult applicable Federal or State regulations, or appropriate officials, concerning approval of the proposal before operations are started.

**N. MEXICO OIL CONSERVATION COMMISS.  
WELL LOCATION AND ACREAGE DEDICATION PLAT**

Form C-102  
Supersedes C-128  
Effective 1-1-65

All distances must be from the outer boundaries of the Section.

Operator <b>WILLIAM W. G. MCCOY</b>			Lease <b>PETERSON FEDERAL</b>		Well No. <b>1</b>
Unit Letter <b>K</b>	Section <b>24</b>	Township <b>16 SOUTH</b>	Range <b>27 EAST</b>	County <b>EDDY</b>	
Actual Footage Location of Well:					
<b>1980</b>	feet from the	<b>SOUTH</b>	line and	<b>1980</b>	feet from the <b>WEST</b> line
Ground Level Elev. <b>3557</b>	Producing Formation <b>San Andres</b>		Pool <b>wildcat</b>	Dedicated Acreage: <b>40</b> Acres	

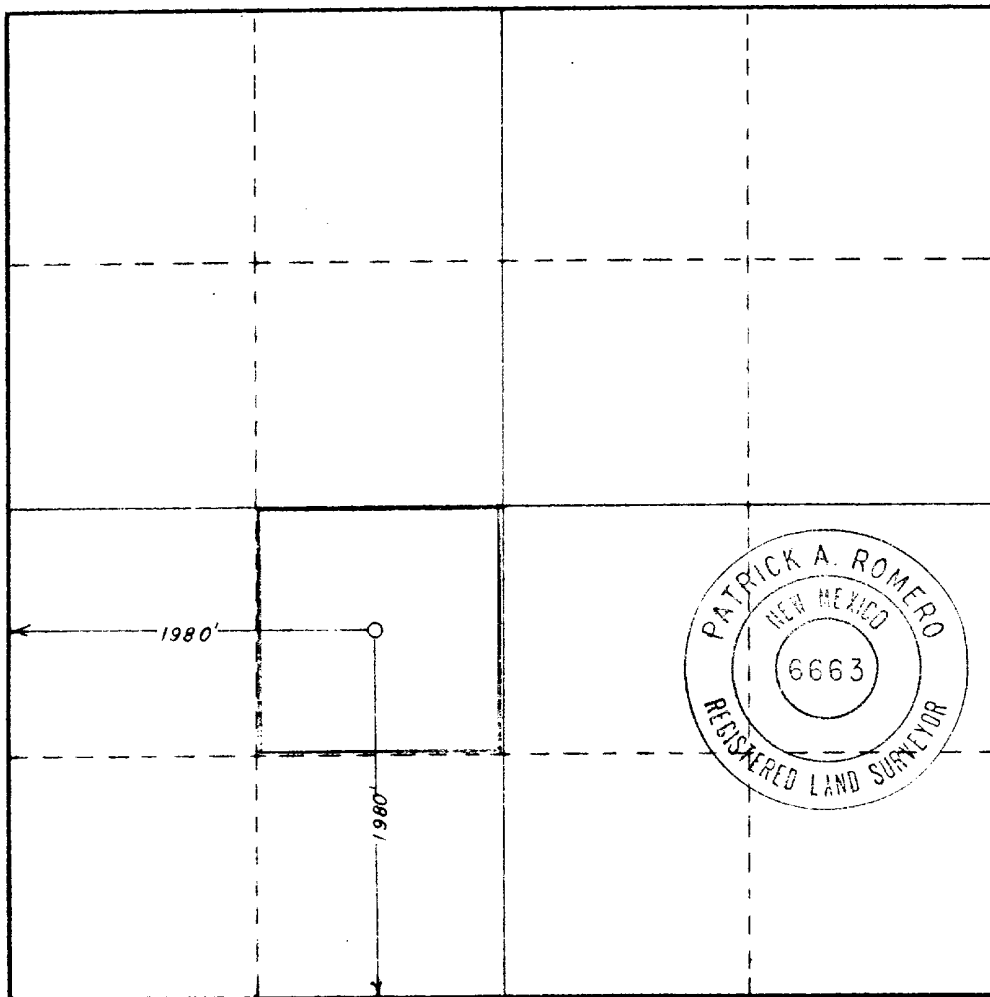
1. Outline the acreage dedicated to the subject well by colored pencil or hachure marks on the plat below.
2. If more than one lease is dedicated to the well, outline each and identify the ownership thereof (both as to working interest and royalty).
3. If more than one lease of different ownership is dedicated to the well, have the interests of all owners been consolidated by communitization, unitization, force-pooling, etc?

☐ Yes    ☐ No    If answer is "yes," type of consolidation \_\_\_\_\_

If answer is "no," list the owners and tract descriptions which have actually been consolidated. (Use reverse side of this form if necessary.) \_\_\_\_\_

No allowable will be assigned to the well until all interests have been consolidated (by communitization, unitization, forced-pooling, or otherwise) or until a non-standard unit, eliminating such interests, has been approved by the Commission.

**RECEIVED**  
**AUG 27 1980**  
**U.S. GEOLOGICAL SURVEY**  
**ARTESIA, NEW MEXICO**



**CERTIFICATION**

I hereby certify that the information contained herein is true and complete to the best of my knowledge and belief.

Name  
**W.G. McCoy**

Position  
**Operator**

Company

Date  
**Aug. 14, 1980**

I hereby certify that the well location shown on this plat was plotted from field notes of actual surveys made by me or under my supervision, and that the same is true and correct to the best of my knowledge and belief.

Date Surveyed

**AUGUST 13, 1980**

Registered Professional Engineer  
and/or Land Surveyor

*Patrick A. Romero*

Certificate No. **JOHN E. WEST 878**  
**PATRICK A. ROMERO 6883**  
**Ronald J. Eidson 3239**



SEP 9 1980

ADDENDUM TO FORM 9-331-C

W.G. McCoy No.1 Peterson Federal  
1980' FSL 1980' FWL, Section 24, T-16-S, R27-E  
Eddy County, New Mexico

O. C. D.  
ARTESIA, OFFICE

1. See attached Form C-102
2. Elevation 3557 G.L.
3. The Surface Formation is Rustler (Permian)
4. Cable Tools furnished by Cortez Drilling Co. Roswell, NM.
5. Proposed depth 1800 feet.
6. Depth of Geologic Markers:

Yates	200'
Queen	1050'
Grayburg	1280'
Premier	1640'
San Andres	1660'
7. No water bearing zones are expected in this well based on examination of records on the various cable tool wells in the area.  
Expected oil and or gas zones are:

Queen	1050'	Oil
Grayburg	1280'	Oil
Premier	1640'	Gas
San Andres	1730'	Oil
8. It is proposed to drill this well to total depth without casing and if productive to run the following casing:

1800 feet of 4-1/2", J-55, 10.50, Range 2, ST&C, New.
9. If fresh water is encountered above 400 feet, 8-5/8", J-55, 24#, Range 2, ST&C, Used casing will be run and cemented with enough Regular Class "C", neat to circulated to surface. If brackish or salt water is encountered in the Queen, a rental string of 7", J-55, 24#, Rg. 2, ST&C will be run and mudded to shut off water until completions.
10. Schematic for pressure control equipment is attached. Functioning of control head will be checked daily.
11. There will be no circulating fluids used for this operation. This is a cable tool rig and none is required.
12. Testing of all shows of oil and water will be made with a bailer after drilling thru any show. Minimum test will be one hour. No cores will be taken. Electric logging will a Gamma Ray-Sonic minimum. If justified by oil and/or gas

a Neutron log may be run.

13. No abnormal pressures are expected in this well. No other hazardous have been reported from the numerous wells in the area.
14. Operations on this well will commence on approval. A rig is standing by ready to move in. It is expected that the drilling operations will be completed within 30 days after start.
15. Being a cable tool operation this will provide for a minimum of surface disturbance and yet allow for increasing the nations energy reserves.



## PREVENTERS

## SHAFFER MECHANICAL CONTROL GATES

(Patented)

## PARTS FOR TYPE 45 SINGLE GATES

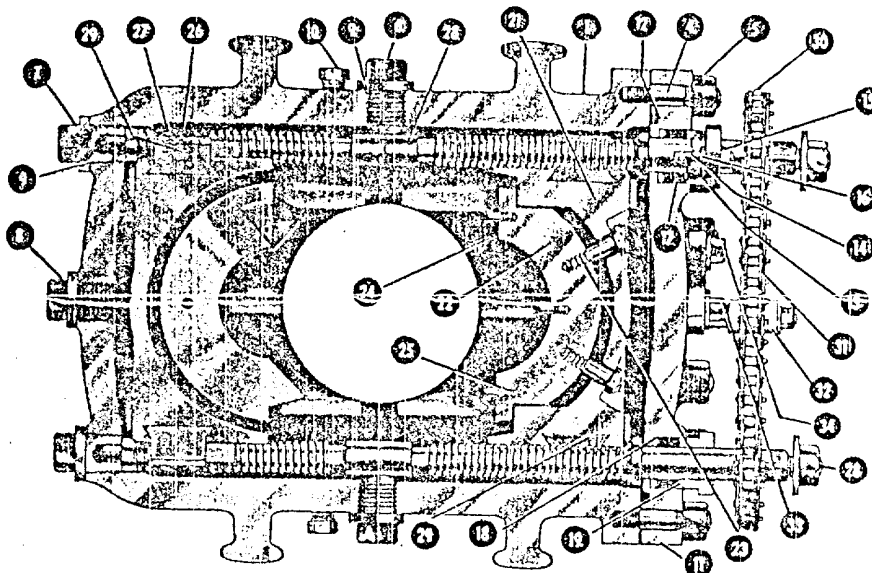


Fig. 84

Shaffer Type 45 Mechanical Single Control Gate—Top View

Part No.	No. Req'd.	NAME OF PART	Part No.	No. Req'd.	NAME OF PART	Part No.	No. Req'd.	NAME OF PART
1	1	Body	15	4	Stuffing Box Gland Stud Nut	26	8	Ram Clip
2	Varies	Body Flange Stud (Not Shown)	16	4	Stuffing Box Gland Jam Nut	27	16	Ram Clip Cap Screw
3	Varies	Body Flange Stud Nut (Not Shown)	17	2 Sets	Stuffing Box Packing (Chevron)	28	2	Operating Screw with Nut
4	Varies	Body End Cover Stud	18	2	Stuffing Box Bronze Packing Ring	29	2 R.H. & 2 L.H.	Bronze Half Nut
5	Varies	Body End Cover Stud Nut	19	2	Stuffing Box Bronze Packing Ring	30	2	Sprocket
6	2	Side Plug	20	2	Flange (Not Shown)	31	1	Sprocket Chain (length varies)
7	2	End Bearing Plug	21	1 Set	Ram Block Holder	32	1	Sprocket Chain Tightener
8	1	End Center Plug	22	1 Set	Ram Block (Pipe or Complete Shut-Off)	33	1	Screw with Ratchet Washer for Chain Tightener
9	5	Copper Gasket for Side and End Plug	23	4	Ram Block Retracting Screw	34	1	Screw with Plain Washer for Chain Tightener
10	2	Washout Plug	24	1 Set	Ram Rubber (Pipe or Complete Shut-Off)	35	1	Sprocket Chain Guard (Not Shown)
11	1	End Cover	25	Varies	Ram Rubber Retaining Screw	36	2	Cap Screw with Washer for Chain Guard (Not Shown)
12	1	Hydraulic Packing for End Cover (Earlier Gates use Metal Gasket)						
13	2	Stuffing Box Gland						
14	4	Stuffing Box Gland Stud						

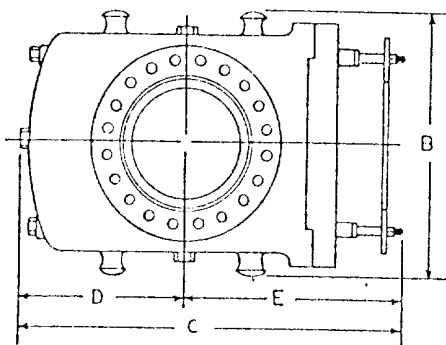


Fig. 85

Dimensional Plan—Shaffer Type 45 Mechanical Single Control Gate

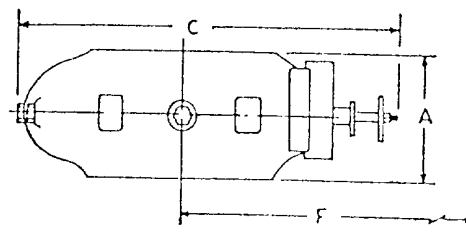


Fig. 86

Dimensional Elevation—Shaffer Type 45 Mechanical Single Control Gate

## DIMENSIONAL AND ENGINEERING DATA ON SHAFFER TYPE 45 MECHANICAL SINGLE CONTROL GATES

Size	Max. Service Pressure Rating, psi	Test Pressure, psi	Vertical Bore	Approx. Weight, Pounds	Ram Size	A Height	B Width	C Length	D Center To Rear	E Center To Front	F Max. Distance Needed To Change Rams
6"	3,000	6,000	7 1/4"	1,500	C.S.O. Thru 5" O.D.	14"	27 1/2"	34"	13 1/2"	20 1/2"	41 1/2"
8"	3,000	6,000	9"	2,050	C.S.O. Thru 7" O.D.	15 1/4"	29 1/2"	40"	16 1/4"	23 1/4"	49 1/4"
10"	3,000	6,000	11"	2,580	C.S.O. Thru 8 1/2" O.D.	16 3/8"	33"	42 3/4"	18 3/4"	24 3/4"	54 3/4"
12"	3,000	6,000	12 3/4"	3,345	C.S.O. Thru 10 1/4" O.D.	17 3/8"	33 1/4"	47 3/8"	21"	26 3/4"	60 3/4"
16"	2,000	3,000	15 1/4"	4,290	C.S.O. Thru 13 1/4" O.D.	17"	37"	51 1/4"	22 3/4"	29 1/4"	66 3/4"

SURFACE USE PLAN

SEP 9 1980

W.G. McCoy No.1 Peterson-Federal  
1980' FSL & 1980' FWL, Section 24, T-16-S,R-27-E  
Eddy County, New Mexico  
Federal Lease NM 17216

O. C. D.  
ARTESIA, OFFICE

1. Existing Roads:

Exhibits "B" & "C" are copies of a portion of New Mexico Road Department planning map and U.S.G.S. topographic map. Starting at Artesia going east on U.S. H-gway 82 for 9 miles to an electric transformer station on the north side of the highway. North thru a cattle guard on an maintained caliche road following a power line. At 3.6 mi. bear right, 1.1 mi. bear left. Continue ahead on road for 2.6 mi. where a cattle guard is crossed, turn sharp right on Dog Canyon road for 0.7 mi. turn north on pipe line road then 21.1 mi. to location on left 297 feet. This approach to the location provides for the least damage to the area. Little or no work on the existing roads will be required.

2. Planned Access Road:

Exhibit "C", topographic map, shows the only new work required. This consist of blading 297 feet of access road. The nature of the surface will eliminated the need for caliche, contouring will provide for proper drainage.

3. Location of Ex-sting Wells:

Exhibit "A" reflects the locations of wells within the area. The nearest drilling well is  $1\frac{1}{2}$  miles southest in the NE $\frac{1}{4}$ SW $\frac{1}{4}$ , Section 30, T-16-S,R-28-E.

4. Location of Tank Battery & Production Facilities:

If production is obtained the tank battery and flow lines will be confined to the proposed drilling pad. It will be placed on the west side of the pad. Oil products in this area move by truck transport therefore no pipe lines will be required.

5. Location and Type of Water Supply:

All water used in the drilling will be trucked in by commercial transport over existing roads.

6. Source of Construction Materials:

Examination of the location with dirt contractor confirms the surface conditions will not require caliche. It is proposed to blade and level location, roll and compact using existing surface material.

7. Handling of Waste Disposal:

All material removed from the hole during drilling will be placed in the pit area as shown on Exhibit "D". This operation will be a cabel tool method therefore drilling mud and disposal will not be required. All combustibile or biochemically degradable material will be place in the burn and trash pit as shown on the Exhibit"D".

8. Ancillary Facilities:

None are planned.

RECEIVED  
AUG 21 1980  
U.S. GEOLOGICAL SURVEY  
ARTESIA, NEW MEXICO

9. Well Site Layout:

The plan for the drilling pad and pits is shown on Exhibit "D". The pits will not be lined since this is a cable tool operation and no drilling mud will be used. Only well cuttings and any testing results will be placed in the pit.

10. Plan for Restoration of Surface:

All deadmen will be pulled, pits will be filled and leveled. All waste material disposed of as explained in Section 7. The access road and location will be restored as near as possible to the original state following the directions of the Bureau of Land Management if the well is abandoned. If production results the area will be cleaned and appropriate paint scheme will be used to blend with the area.

11. Other Information:

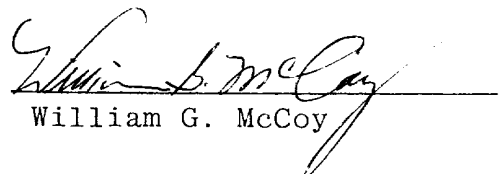
The operations proposed using existing roads will not result in any appreciable damage to the area. The immediate location area shows a very thin layer of topsoil and massive anhydrite below the soil level. Vegetation is sparse, no active wildlife was observed. No fence lines need be crossed with cattle guards.

12. Operator Representatives:

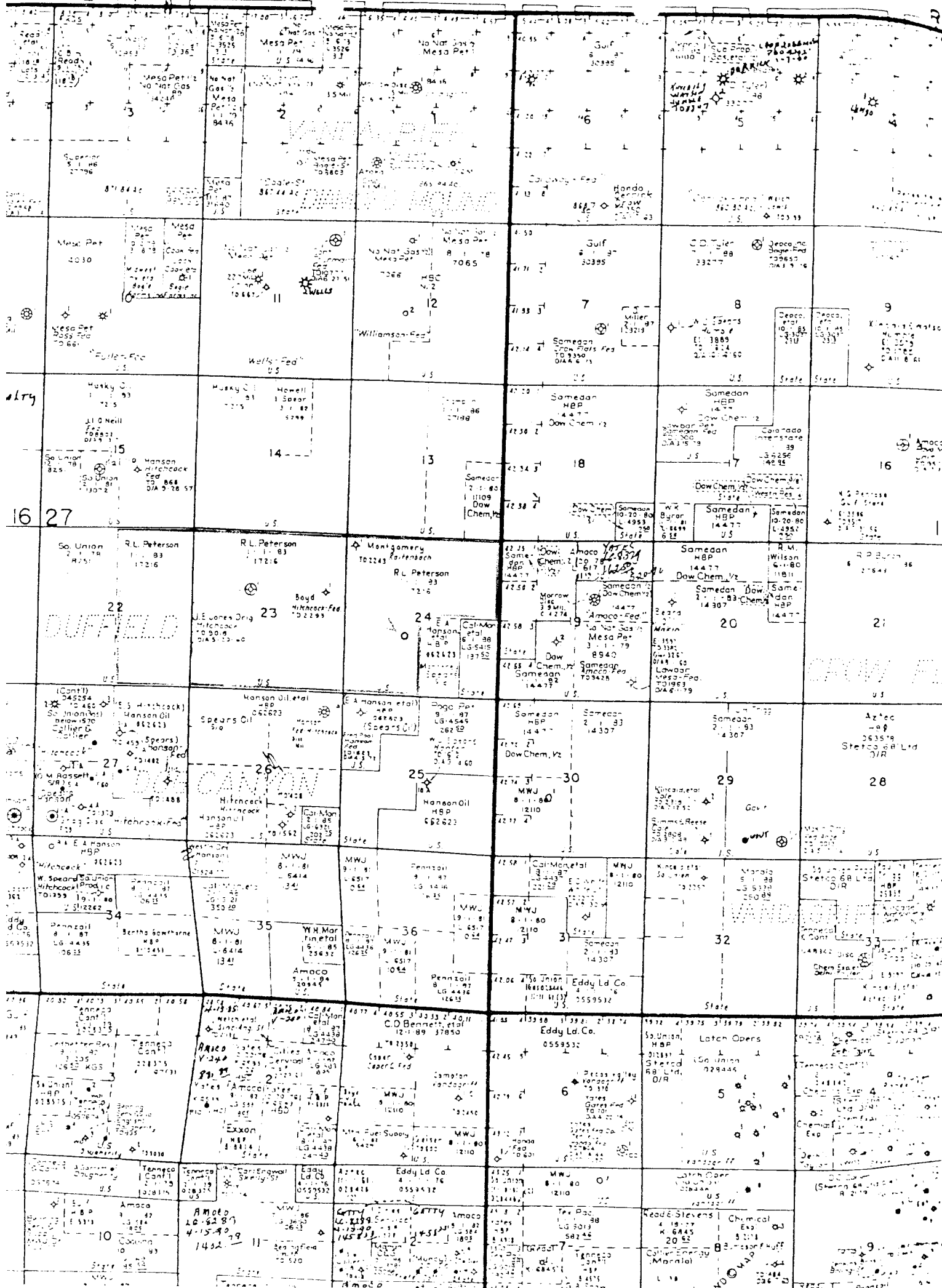
W.G. McCoy	610 Security National Bank Bldg.	622-5012
	Roswell, New Mexico	623-0166

13. Certification:

I certify that I have inspected the proposed drill site and access route; that I am familiar with the conditions which presently exist; that the statements made in this plan are, to the best of my knowledge, true and correct; and that the work associated with the operations proposed herein will be performed by me or my contractors and subcontractors in conformity with this plan and the terms and conditions under which it is approved.

  
William G. McCoy





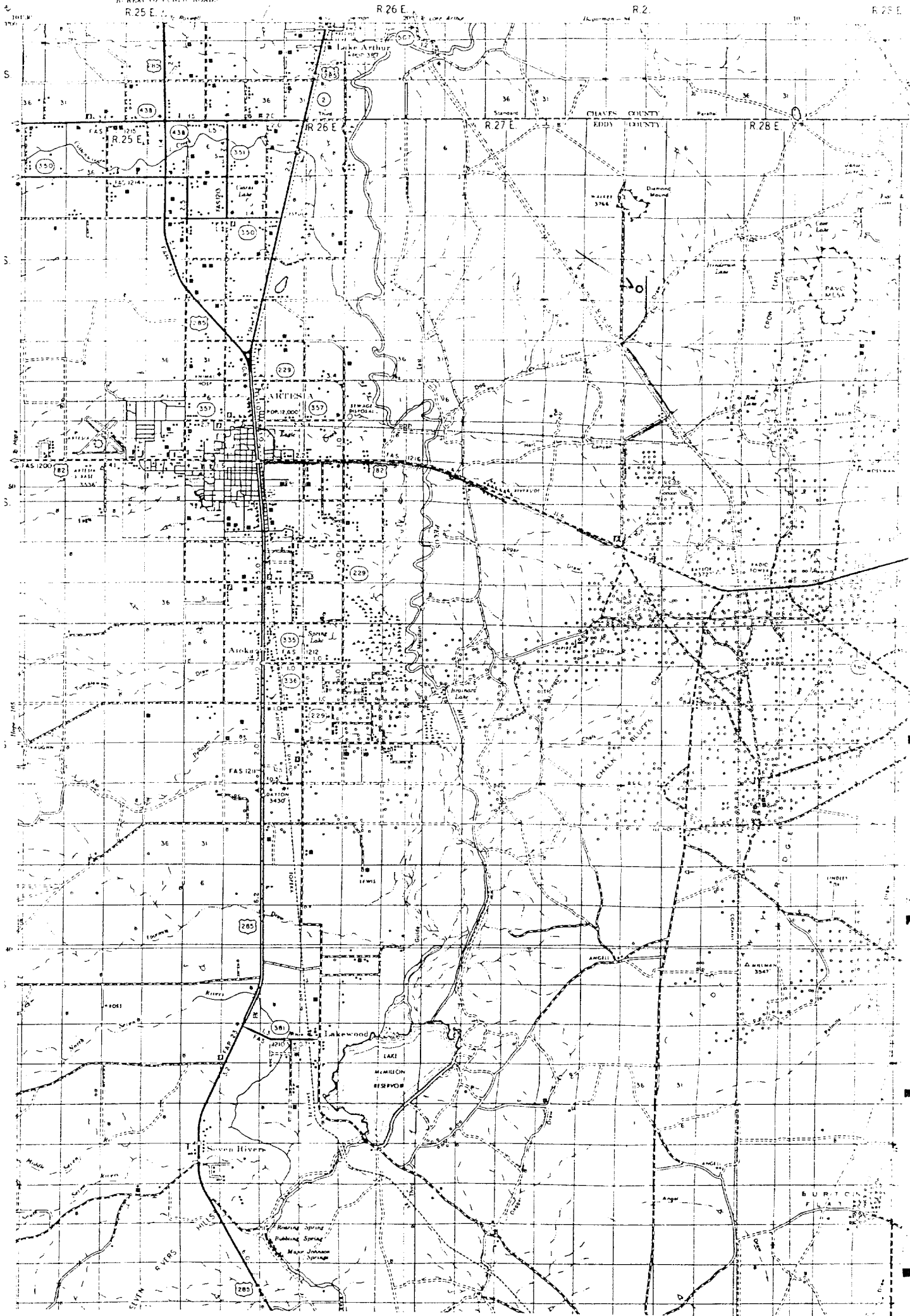
SURFACE USE PLAN: Exhibit "A"

Wm. G. McCOY No.1 PETERSON-FED.

1980' Fr S&W, Sec. 24, T-16-S, R-27-E

EDDY COUNTY, NEW MEXICO

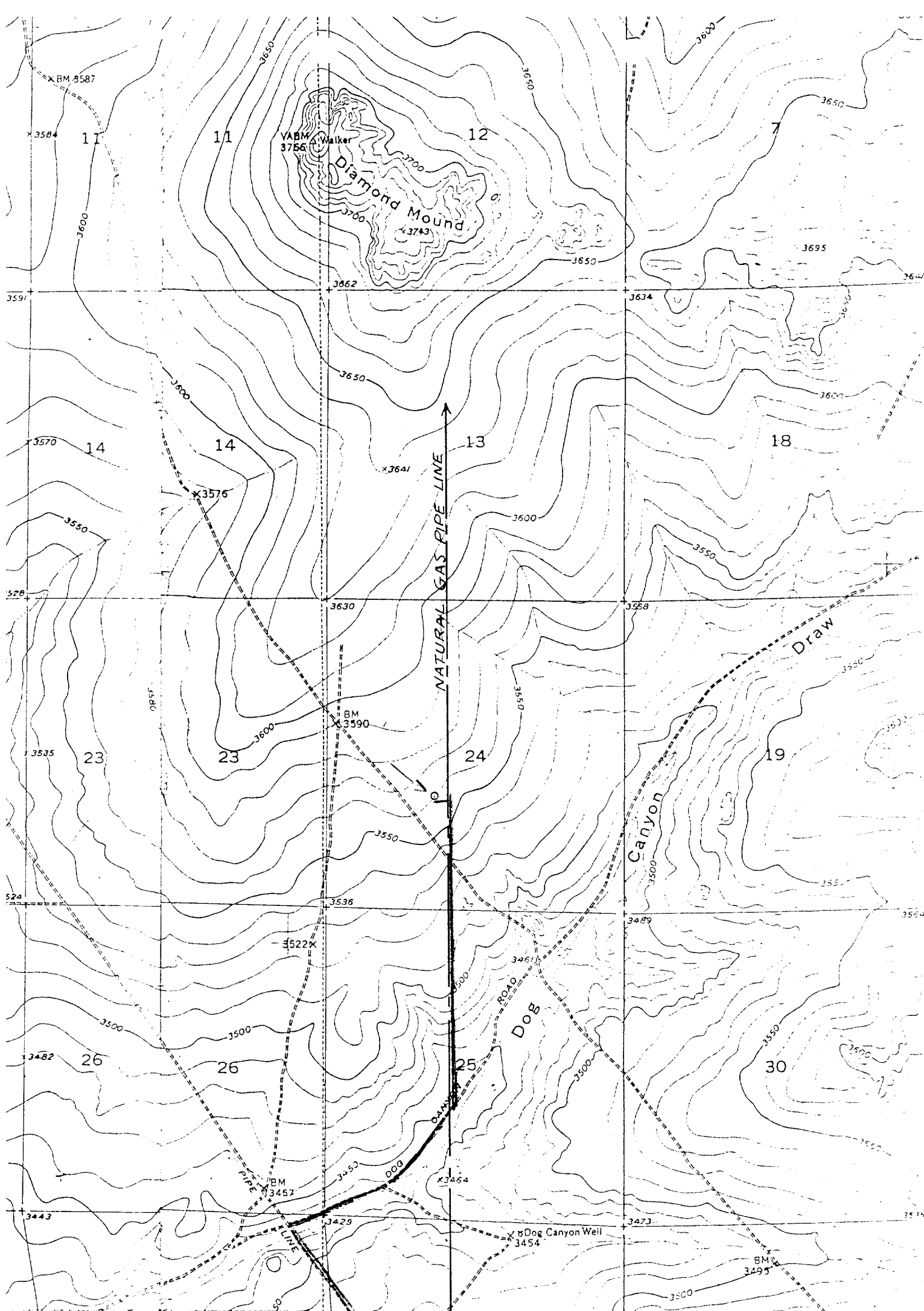
Scale: 1"=4000'



SURFACE USE PLAN: Exhibit "B"

Wm. G. McCOY No.1 PETERSON-FED.

1980' Fr S&W, Sec. 24, T-16-S, R-27-E



SURFACE USE PLAN: Exhibit :C"

Wm. G. McCoy No.1 PETERSON-FED.

1980' Fr S&W, Sec.24, T-16-S, R-27-E

— EXISTING RD  
— NEW ROAD 279'

SURFACE USE PLAN: Exhibit "D"

Wm. G. McCoy No.1 Peterson Fed.  
1980' Fr S&W, Sec.24, T-16-S, R-27-E  
Eddy County, New Mexico

