

NEW MEXICO OIL CONSERVATION ~~RECEIVED~~Form C-101
Revised 1-1-65

SEP 17 1980

O. C. D.
ARTESIA, OFFICE

5A. Indicate Type of Lease

STATE ☒ FEE ☐

5. State Oil & Gas Lease No.

B-1969

APPLICATION FOR PERMIT TO DRILL, DEEPEN, OR PLUG BACK

7. Unit Agreement Name

8. Farm or Lease Name

State B-1969, Tr. 4

9. Well No.

#24

10. Field and Pool, or Wildcat

East Empire Yates 7-R

12. County

Eddy

19. Proposed Depth

800'

19A. Formation

Seven Rivers

20. Rotary or C.T.

Rotary

21. Elevations (Show whether DF, RT, etc.)

3558 GL

21A. Kind & Status Plug. Bond

Statewide

21B. Drilling Contractor

Yucca Drilling Co., Inc.

22. Approx. Date Work will start

October 6, 1980

PROPOSED CASING AND CEMENT PROGRAM

SIZE OF HOLE	SIZE OF CASING	WEIGHT PER FOOT	SETTING DEPTH	SACKS OF CEMENT	EST. TOP
7 7/8"	4 1/2"	9 1/2"	800'	250 sxs.	surface

October 6, 1980: Plan to drill Seven Rivers well using 7 7/8" bit and reach T.D. at approximately 800'.

October 7, 1980: Plan to run 800' of 4 1/2", 9 1/2# casing and circulate with 250 sacks of Class "C" cement to surface.

APPROVAL VALID
FOR 90 DAYS UNLESS
DRILLING COMMENCED,

EXPIRES 12-23-80

IN ABOVE SPACE DESCRIBE PROPOSED PROGRAM: IF PROPOSAL IS TO DEEPEN OR PLUG BACK, GIVE DATA ON PRESENT PRODUCTIVE ZONE AND PROPOSED NEW PRODUCTIVE ZONE. GIVE BLOWOUT PREVENTER PROGRAM, IF ANY.

I hereby certify that the information above is true and complete to the best of my knowledge and belief.

Signed Rhonda Parrish Title Secretary Date 9-16-80

(This space for State Use)

APPROVED BY W.A. Gressett TITLE SUPERVISOR, DISTRICT II DATE SEP 23 1980

CONDITIONS OF APPROVAL, IF ANY:

Cement must be circulated to
surface behind 4 1/2" casing

Notify DMC in sufficient
time to witness cementing

N MEXICO OIL CONSERVATION COMMISS
WELL LOCATION AND ACREAGE DEDICATION PLAT

Form C-102
Supersedes C-128
Effective 1-1-65

All distances must be from the outer boundaries of the Section.

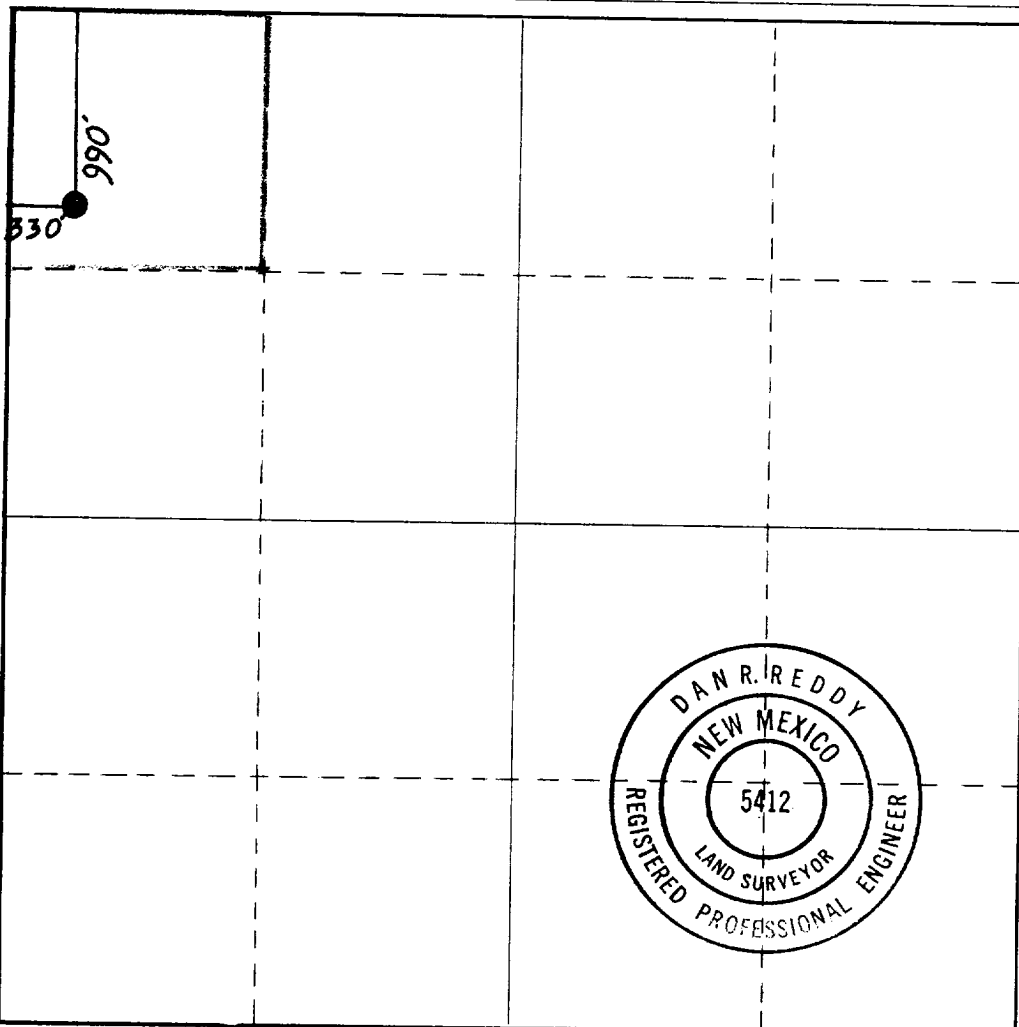
Operator COLLIER ENERGY INC.			Lease State B-1969, Tr. 4		Well No. #24
Unit Letter D	Section 22	Township 17 South	Range 28 East	County Eddy	
Actual Footage Location of Well: 990 feet from the North line and 330 feet from the West line					
Ground Level Elev. 3558.	Producing Formation Seven Rivers		Pool East Empire Yates 7-R	Dedicated Acreage: 40 Acres	

1. Outline the acreage dedicated to the subject well by colored pencil or hachure marks on the plat below.
2. If more than one lease is dedicated to the well, outline each and identify the ownership thereof (both as to working interest and royalty).
3. If more than one lease of different ownership is dedicated to the well, have the interests of all owners been consolidated by communitization, unitization, force-pooling, etc?

☐ Yes ☐ No If answer is "yes," type of consolidation _____

If answer is "no," list the owners and tract descriptions which have actually been consolidated. (Use reverse side of this form if necessary.) _____

No allowable will be assigned to the well until all interests have been consolidated (by communitization, unitization, forced-pooling, or otherwise) or until a non-standard unit, eliminating such interests, has been approved by the Commission.



CERTIFICATION

I hereby certify that the information contained herein is true and complete to the best of my knowledge and belief.

Name
Khonda Parrish
Position
Secretary
Company
Collier Energy, Inc.
Date
9-16-80

I hereby certify that the well location shown on this plat was plotted from field notes of actual surveys made by me or under my supervision, and that the same is true and correct to the best of my knowledge and belief.

Date Surveyed
August 7, 1980
Registered Professional Engineer and/or Land Surveyor

Dan R. Reddy
Certificate No.
NM PE&LS #5412