

c/SF

30-015-23478

Form C-101  
Revised 1-1-65

NEW MEXICO OIL CONSERVATION COMMISSION  
**RECEIVED**

SEP 17 1980

O. C. D.

5A. Indicate Type of Lease  
STATE  FEE

5. State Oil & Gas Lease No.  
B-1969

NO. OF COPIES RECEIVED	6
DISTRIBUTION	
SANTA FE	1
FILE	1 ✓
U.S.G.S.	2
LAND OFFICE	1
OPERATOR	1

APPLICATION FOR PERMIT TO DRILL, DEEPEN, OR PLUG BACK OFFICE

1a. Type of Work  
DRILL  DEEPEN  PLUG BACK

b. Type of Well  
OIL WELL  GAS WELL  OTHER

2. Name of Operator  
Collier Energy, Inc.

3. Address of Operator  
P. O. Box 798, Artesia, New Mexico 88210

4. Location of Well  
UNIT LETTER D LOCATED 330 FEET FROM THE North LINE  
AND 990 FEET FROM THE West LINE OF SEC. 22 TWP. 17S RGE. 28E NMPM

7. Unit Agreement Name

8. Farm or Lease Name  
State B-1969, Tr. 4

9. Well No.  
#26

10. Field and Pool, or Wildcat  
Used East Empire Yates 7-R

12. County  
Eddy

19. Proposed Depth  
800'

19A. Formation  
Seven Rivers

20. Rotary or C.T.  
Rotary

21. Elevations (Show whether DF, RT, etc.)  
3543 GL

21A. Kind & Status Plug. Bond  
Statewide

21B. Drilling Contractor  
Yucca Drilling Co., Inc.

22. Approx. Date Work will start  
October 13, 1980

PROPOSED CASING AND CEMENT PROGRAM

SIZE OF HOLE	SIZE OF CASING	WEIGHT PER FOOT	SETTING DEPTH	SACKS OF CEMENT	EST. TOP
7 7/8"	4 1/2"	9 1/2#	800'	250 sxs.	surface

October 13, 1980: Plan to drill Seven Rivers well using 7 7/8" bit and reach T.D. at approximately 800'.

October 14, 1980: Plan to run 800' of 4 1/2", 9 1/2# casing and circulate with 250 sacks of Class "C" cement to surface.

APPROVAL VALID FOR 90 DAYS UNLESS DRILLING COMMENCED,

EXPIRES 12-23-80

IN ABOVE SPACE DESCRIBE PROPOSED PROGRAM; IF PROPOSAL IS TO DEEPEN OR PLUG BACK, GIVE DATA ON PRESENT PRODUCTIVE ZONE AND PROPOSED NEW PRODUCTIVE ZONE. GIVE BLOWOUT PREVENTER PROGRAM, IF ANY.

hereby certify that the information above is true and complete to the best of my knowledge and belief.

Signed Rhonda Parowh Title Secretary Date 9-16-80

(This space for State Use)

APPROVED BY W. A. Gressett TITLE SUPERVISOR, DISTRICT II DATE SEP 23 1980

CONDITIONS OF APPROVAL, IF ANY:

Cement must be circulated to surface behind 4 1/2" casing

Notify N.M.O.C.C. in sufficient time to witness cementing 4 1/2"

NEW MEXICO OIL CONSERVATION COMMISSION  
WELL LOCATION AND ACREAGE DEDICATION PLAT

Form C-102  
Supersedes C-128  
Effective 1-1-65

All distances must be from the outer boundaries of the Section.

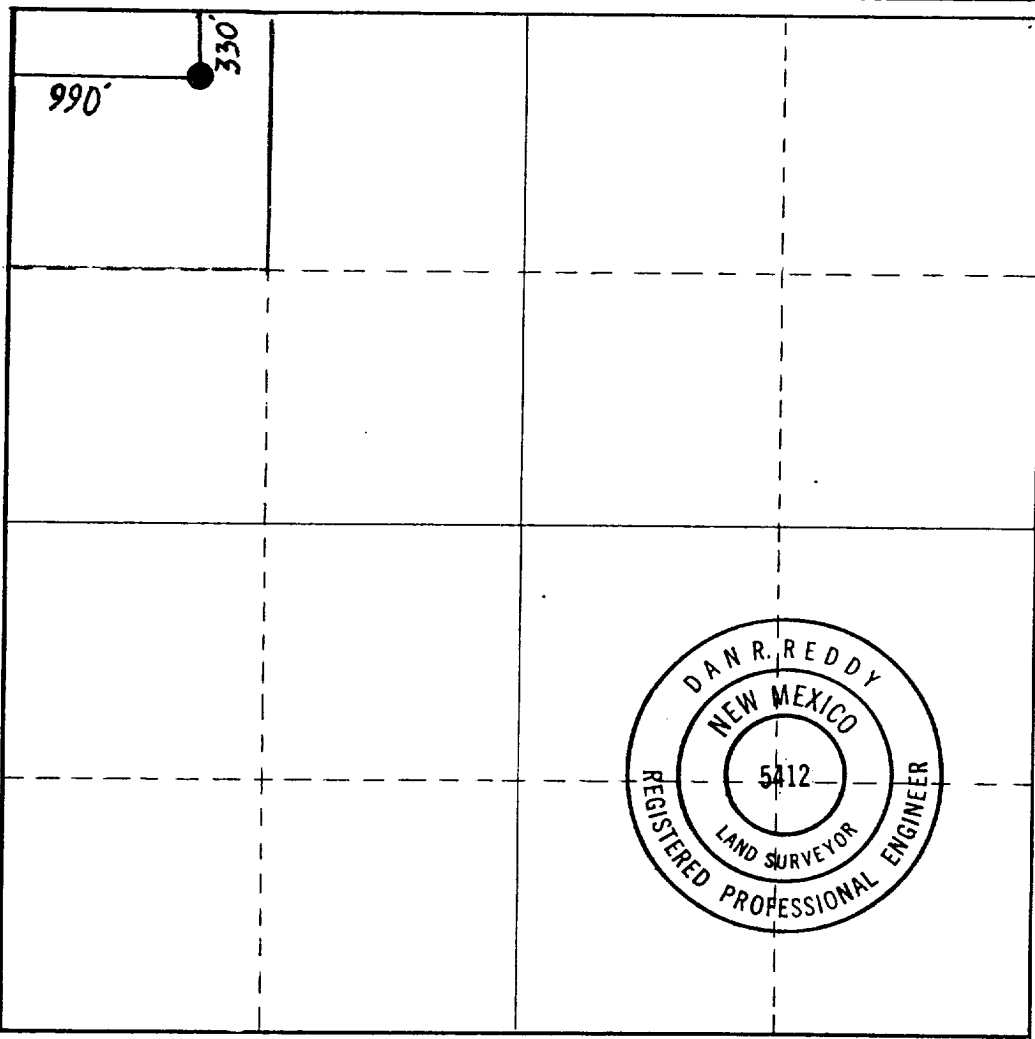
Operator <b>COLLIER ENERGY INC.</b>		Lease <b>State B-1969, Tr. 4</b>		Well No. <b>#26</b>
Unit Letter <b>D</b>	Section <b>22</b>	Township <b>17. South</b>	Range <b>28 East</b>	County <b>Eddy</b>
Actual Footage Location of Well: <b>330</b> feet from the <b>North</b> line and <b>990</b> feet from the <b>West</b> line				
Ground Level Elev. <b>3543.</b>	Producing Formation <b>Seven Rivers</b>	Pool <b>East Empire Yates 7-R</b>	Dedicated Acreage: <b>40</b> Acres	

1. Outline the acreage dedicated to the subject well by colored pencil or hachure marks on the plat below.
2. If more than one lease is dedicated to the well, outline each and identify the ownership thereof (both as to working interest and royalty).
3. If more than one lease of different ownership is dedicated to the well, have the interests of all owners been consolidated by communitization, unitization, force-pooling, etc?

Yes  No If answer is "yes," type of consolidation \_\_\_\_\_

If answer is "no," list the owners and tract descriptions which have actually been consolidated. (Use reverse side of this form if necessary.) \_\_\_\_\_

No allowable will be assigned to the well until all interests have been consolidated (by communitization, unitization, forced-pooling, or otherwise) or until a non-standard unit, eliminating such interests, has been approved by the Commission.



CERTIFICATION

I hereby certify that the information contained herein is true and complete to the best of my knowledge and belief.

Name  
*Rhonda Paroush*  
Position  
**Secretary**  
Company  
**Collier Energy, Inc.**  
Date  
**9-16-80**

I hereby certify that the well location shown on this plat was plotted from field notes of actual surveys made by me or under my supervision, and that the same is true and correct to the best of my knowledge and belief.

Date Surveyed  
**August 7, 1980**  
Registered Professional Engineer and/or Land Surveyor

*Dan R. Reddy*

Certificate No.  
**NM PE&LS #5412**

