

NO. OF COPIES RECEIVED	5
DISTRIBUTION	
SANTA FE	1
FILE	1
U.S.G.S.	2
LAND OFFICE	
OPERATOR	1

NEW MEXICO OIL CONSERVATION COMMISSION

SEP 17 1980

ARTESIA OFFICE

30-015-23481

Form C-101  
Revised 1-1-65

5A. Indicate Type of Lease	
STATE <input type="checkbox"/>	FEED <input checked="" type="checkbox"/>
5. State Oil & Gas Lease No.	
7. Unit Agreement Name	
8. Firm or Lease Name	
Gissler AV	
9. Well No.	
23	
10. Field and Pool, or Without	
Eagle Creek S.A.	
11. County	
Eddy	

APPLICATION FOR PERMIT TO DRILL, DEEPEN, OR PLUG BACK

1a. Type of Work		DRILL <input checked="" type="checkbox"/>		DEEPEN <input type="checkbox"/>		PLUG BACK <input type="checkbox"/>	
b. Type of Well		OIL WELL <input checked="" type="checkbox"/>		GAS WELL <input type="checkbox"/>		OTHER <input type="checkbox"/>	
2. Name of Operator		Yates Petroleum Corporation					
3. Address of Operator		207 South 4th Street, Artesia, New Mexico 88210					
4. Location of Well		UNIT LETTER G LOCATED 1650 FEET FROM THE North LINE					
AND 2310 FEET FROM THE East LINE OF SEC. 23 TWP. 17S RGE. 25E NMPM							
12. Proposed Depth		approx. 1500		19A. Formation		San Andres	
20. Rotary or C.T.		Rotary					
21. Elevations (Show whether DT, RL, etc.)		3494' GL		21A. Kind & Status Plug. Bond		Blanket	
21B. Drilling Contractor		L & M Drilling Co.		22. Approx. Date Work will start		As soon as approved	

PROPOSED CASING AND CEMENT PROGRAM

SIZE OF HOLE	SIZE OF CASING	WEIGHT PER FOOT	SETTING DEPTH	SACKS OF CEMENT	EST. TOP
15"	10 3/4"	32#	approx. 350'	300 sx	circulate
9 1/2"	7"	20#	approx. 1150'	800 sx	circulate
6 3/4"	4 1/2 & 5 1/2"	10.5 & 15.5#	TD 1500'	180 sx	circulate

Propose to drill a San Andres test. Approximately 350' of 10 3/4" casing will be run if needed, and cemented to the surface to shut off gravel and cavings, 7" casing will be run 100' below the Artesian Zone, cemented to surface. A tapered string of production casing will be run and cemented, perforated and sand frac'd for completion.

MUD PROGRAM: Fresh water mud w/LCM from surface to 1150', fresh water to total depth.

BOP PROGRAM: BOP's to be installed on 7" casing and tested daily.

APPROVAL VALID  
FOR 90 DAYS UNLESS  
DRILLING COMMENCED,

EXPIRES 12-23-80

IN ABOVE SPACE DESCRIBE PROPOSED PROGRAM: IF PROPOSAL IS TO DEEPEN OR PLUG BACK, GIVE DATA ON PRESENT PRODUCTIVE ZONE AND PROPOSED NEW PRODUCTIVE ZONE. GIVE BLOWOUT PREVENTER PROGRAM, IF ANY.

I hereby certify that the information above is true and complete to the best of my knowledge and belief.

Signed John A. Lopez Title Regulatory Coordinator Date 9/8/80  
(This space for Date Use)

APPROVED BY W.A. Gussert TITLE SUPERVISOR, DISTRICT II DATE SEP 23 1980  
CONDITIONS OF APPROVAL, IF ANY:

Cement must be circulated to  
surface behind all casing

Notify N.M.O.C.C. in sufficient  
time to witness cementing  
the 7" casing

**N MEXICO OIL CONSERVATION COMMISSION  
WELL LOCATION AND ACREAGE DEDICATION PLAT**

Form C-102  
Supersedes C-128  
Effective 1-1-65

All distances must be from the outer boundaries of the Section.

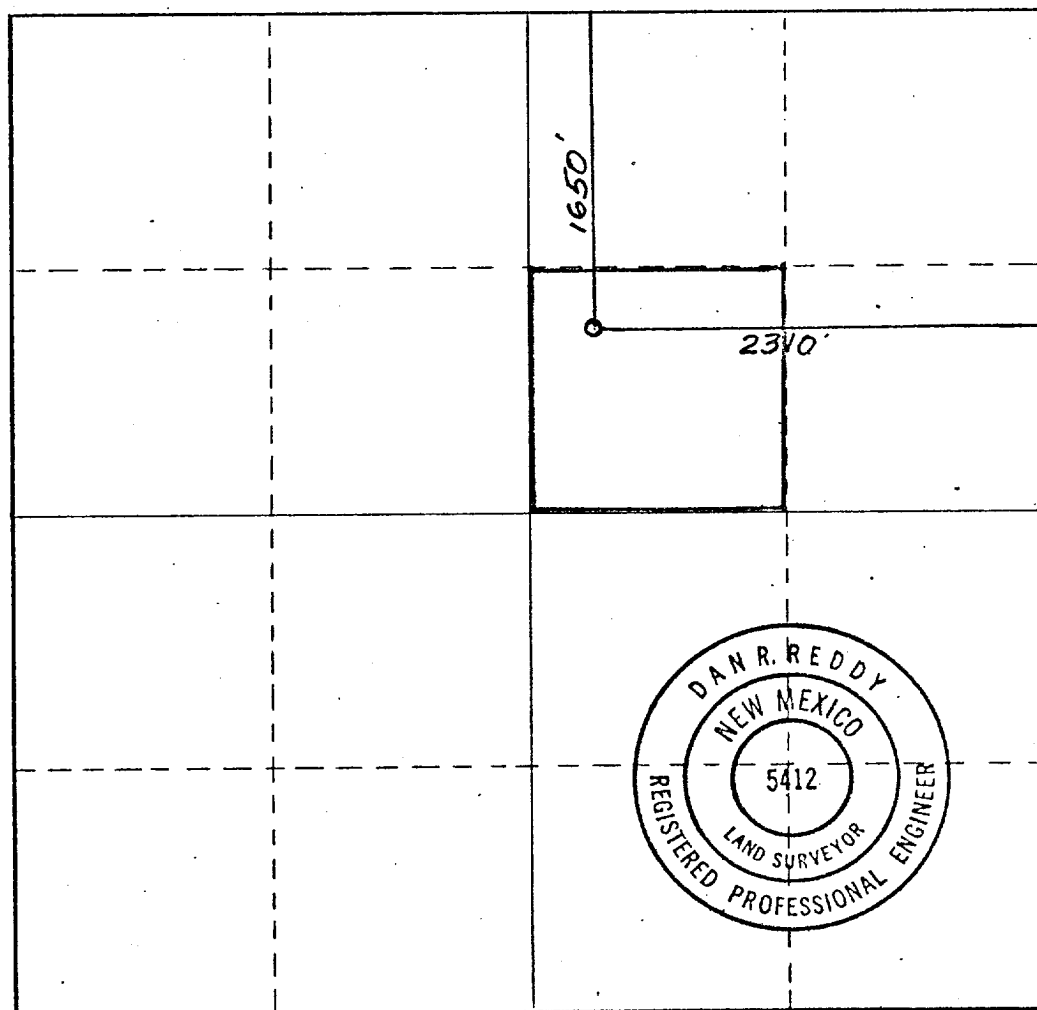
Operator <b>YATES PETROLEUM CORPORATION</b>			Lease <b>Gissler AV</b>		Well No. <b>23</b>
Unit Letter <b>G</b>	Section <b>23</b>	Township <b>17 South</b>	Range <b>25 East</b>	County <b>Eddy</b>	
Actual Footage Location of Well: <b>1650</b> feet from the <b>North</b> line and <b>2310</b> feet from the <b>East</b> line					
Ground Level Elev. <b>3491.</b>	Producing Formation <b>SAN ANDRES</b>		Pool <b>EAGLE CREEK S.A.</b>	Dedicated Acreage: <b>40</b> Acres	

1. Outline the acreage dedicated to the subject well by colored pencil or hachure marks on the plat below.
2. If more than one lease is dedicated to the well, outline each and identify the ownership thereof (both as to working interest and royalty).
3. If more than one lease of different ownership is dedicated to the well, have the interests of all owners been consolidated by communitization, unitization, force-pooling, etc?

☐ Yes    ☐ No    If answer is "yes," type of consolidation \_\_\_\_\_

If answer is "no," list the owners and tract descriptions which have actually been consolidated. (Use reverse side of this form if necessary.) \_\_\_\_\_

No allowable will be assigned to the well until all interests have been consolidated (by communitization, unitization, forced-pooling, or otherwise) or until a non-standard unit, eliminating such interests, has been approved by the Commission.



**CERTIFICATION**

*I hereby certify that the information contained herein is true and complete to the best of my knowledge and belief.*

*Johnny A. Lopez*

Name

**JOHNNY A. LOPEZ**

Position

**REGULATORY COORDINATOR**

Company

**YATES PETROLEUM CORPORATION**

Date

**9/17/80**

*I hereby certify that the well location shown on this plat was plotted from field notes of actual surveys made by me or under my supervision, and that the same is true and correct to the best of my knowledge and belief.*

Date Surveyed

**September 12, 1980**

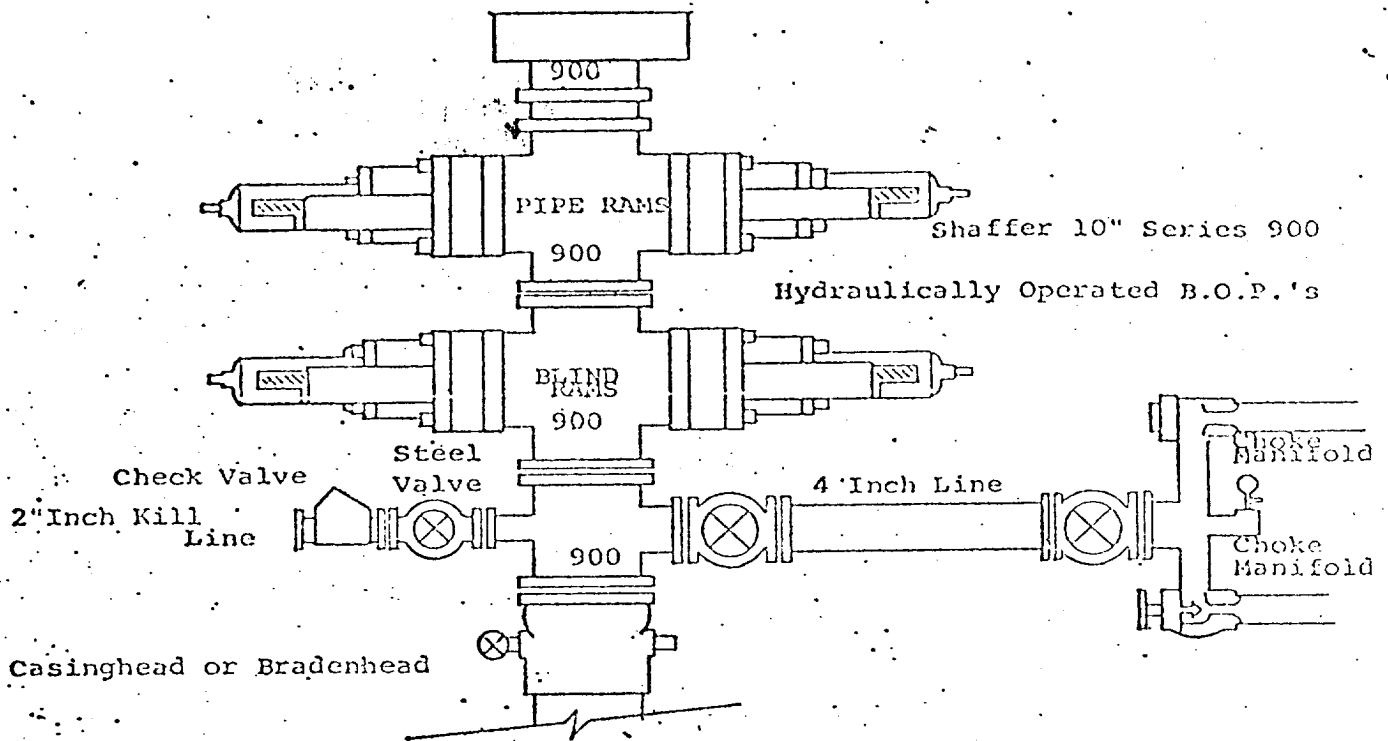
Registered Professional Engineer and/or Land Surveyor

*Dan R. Reddy*

Certificate No.

**NM PE&LS #5412**

0 330 660 990 1320 1650 1980 2310 2640 2000 1500 1000 500 0



THE FOLLOWING CONSTITUTE MINIMUM BLOWOUT PREVENTER REQUIREMENTS

1. All preventers to be hydraulically operated with secondary manual controls installed prior to drilling out from under casing.
2. Choke outlet to be a minimum of 4" diameter.
3. Kill line to be of all steel construction of 2" minimum diameter.
4. All connections from operating manifolds to preventers to be all steel, hole or tube a minimum of one inch in diameter.
5. The available closing pressure shall be at least 15% in excess of that required with sufficient volume to operate the B.O.P.'s.
6. All connections to and from preventer to have a pressure rating equivalent to that of the B.O.P.'s.
7. Inside blowout preventer to be available on rig floor.
8. Operating controls located a safe distance from the rig floor.
9. Hole must be kept filled on trips below intermediate casing. Operator not responsible for blowouts resulting from not keeping hole full.
10. D. P. float must be installed and used below zone of first gas intrusion.