

NO. OF COPIES RECEIVED	1
DISTRIBUTION	
SANTA FE	1
FILE	1
U.S.G.S.	1
LAND OFFICE	1
OPERATOR	1

NEW MEXICO OIL CONSERVATION COMMISSION

OCT 29 1980

C. C. D.
ARTESIA, OFFICE

30-015-23527

Form C-101
Revised 1-1-65

5A. Is this type of work	STATE <input type="checkbox"/>	FEE <input checked="" type="checkbox"/>
5. State of New Mexico		

APPLICATION FOR PERMIT TO DRILL, DEEPEN, OR PLUG BACK

1a. Type of Work		7. Date of Approval	
b. Type of Well DRILL <input checked="" type="checkbox"/> DEEPEN <input type="checkbox"/> PLUG BACK <input type="checkbox"/> SINGLE ZONE <input type="checkbox"/> MULTIPLE ZONE <input type="checkbox"/>		8. Name of Lessee	
c. Name of Operator Yates Petroleum Corporation		9. Well No. 24	
1. Address of Operator 207 South 4th Street, Artesia, NM 88210		10. Is this well located on or adjacent to Eagle Creek S.A.	
4. Location of Well UNIT LETTER K LOCATED 2310 FEET FROM THE South LINE 2310 FEET FROM THE West LINE OF SEC. 23 TWP. 17S RGE. 25E		11. County Eddy	
12. Proposed Depth approx. 1500		13A. Formation San Andres	
13B. Drilling Contractor L&M Drilling Co.		13C. Date Work will start As soon as approved	
14. Approx. Date Work will start		15. Approx. Date Work will start	

PROPOSED CASING AND CEMENT PROGRAM

SIZE OF HOLE	SIZE OF CASING	WEIGHT PER FOOT	SETTING DEPTH	SACKS OF CEMENT	EST. TOP
15"	10 3/4"	32#	approx. 350'	Circulate	
9 1/2"	7"	20#	approx. 1150'	Circulate	
6 1/4"	4 1/2 & 5 1/2"	10.5 & 15.5#	TD	Circulate	

Propose to drill a San Andres test. Approximately 350' of 10 3/4" casing will be run if needed, and cemented to the surface to shut off surface gravel and cavings, 7" casing will be run 100' below the Artesian Zone, cemented to surface. A tapered string of production casing will be run and cemented, perforated and San frac'd for completion.

MUD PROGRAM: Fresh water mud w/LCM from surface to 1150', fresh water to total depth.

BOP PROGRAM: BOP's to be installed on 7" casing and tested daily.

APPROVED FOR STATE USES
DRILLING COMMENCED
EXPIRES 2-6-81

IN ABOVE SPACE DESCRIBE PROPOSED PROGRAM; IF PROPOSAL IS TO DEEPEN OR PLUG BACK, GIVE DATA ON PRESENT PRODUCTIVE ZONE AND PROPOSED NEW PRODUCTION ZONE. GIVE RECORD PREVENTER PROGRAM, IF ANY.

I hereby certify that the information above is true and complete to the best of my knowledge and belief.

Signed John A. Lopez Title Regulatory Coordinator Date 10/29/80
(This space for State Use)

APPROVED BY W. A. Gressett TITLE SUPERVISOR, DISTRICT II DATE NOV 06 1980

CONDITIONS OF APPROVAL, IF ANY:

Cement must be circulated to surface behind all casing

Notify NM O.C.C. in sufficient time to witness casing the 7" casing

N MEXICO OIL CONSERVATION COMMISSION
WELL LOCATION AND ACREAGE DEDICATION PLAT

Form C-192
Supersedes C-128
Effective 1-1-65

All distances must be from the outer boundaries of the Section.

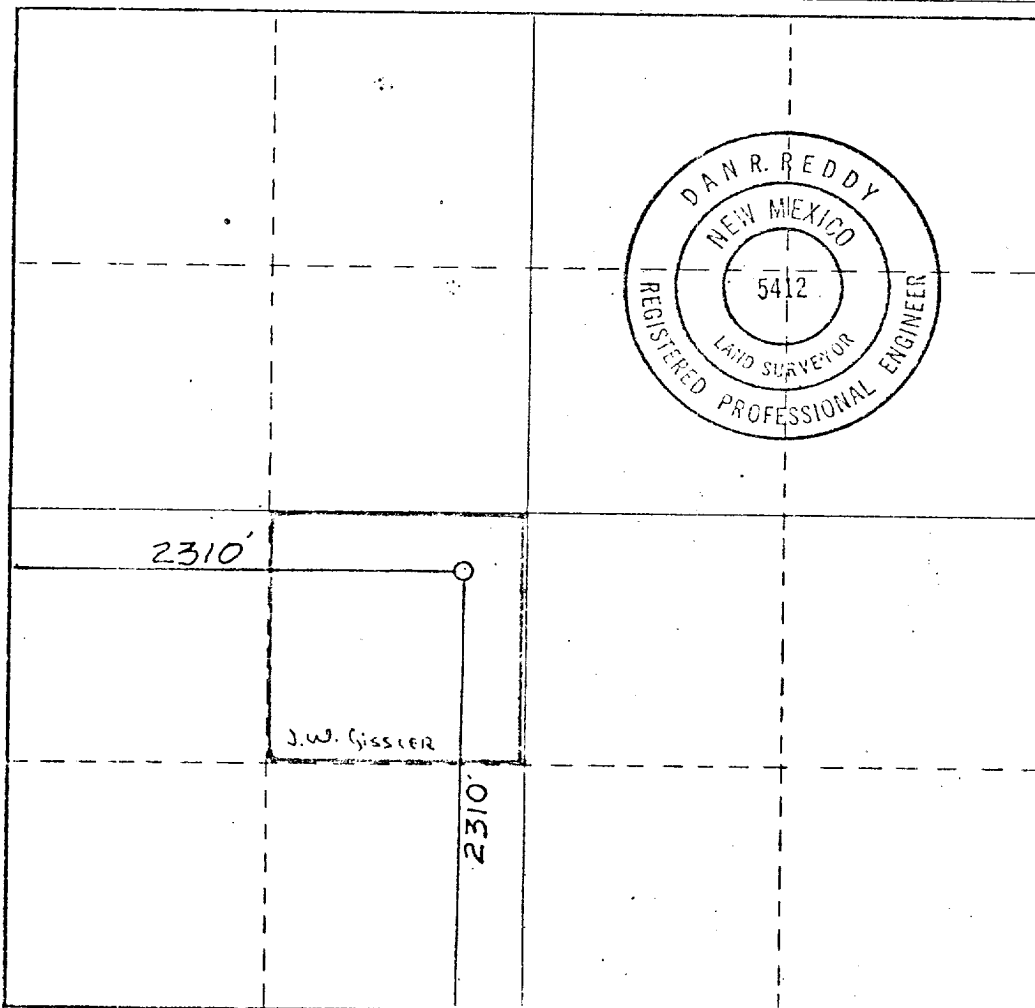
Operator YATES PETROLEUM CORPORATION			Lease Gissler Av		Well No. 24
Unit Letter K	Section 23	Township 17 South	Range 25 East	County Eddy	
Actual Well Location of Well:					
2310 feet from the South line and		2310 feet from the West line			
Ground Level Elev. 2497.	Producing Formation SAN ANDRES	Pool EAGLE CREEK - S.A.		Dedicated Acreage: 40 Acres	

1. Outline the acreage dedicated to the subject well by colored pencil or hachure marks on the plat below.
2. If more than one lease is dedicated to the well, outline each and identify the ownership thereof (both as to working interest and royalty).
3. If more than one lease of different ownership is dedicated to the well, have the interests of all owners been consolidated by communitization, unitization, force-pooling, etc?

☐ Yes ☐ No If answer is "yes," type of consolidation _____

If answer is "no," list the owners and tract descriptions which have actually been consolidated. (Use reverse side of this form if necessary.) _____

No allowable will be assigned to the well until all interests have been consolidated (by communitization, unitization, forced-pooling, or otherwise) or until a non-standard unit, eliminating such interests, has been approved by the Commission.



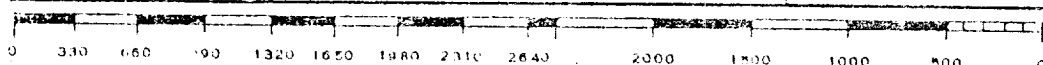
CERTIFICATION

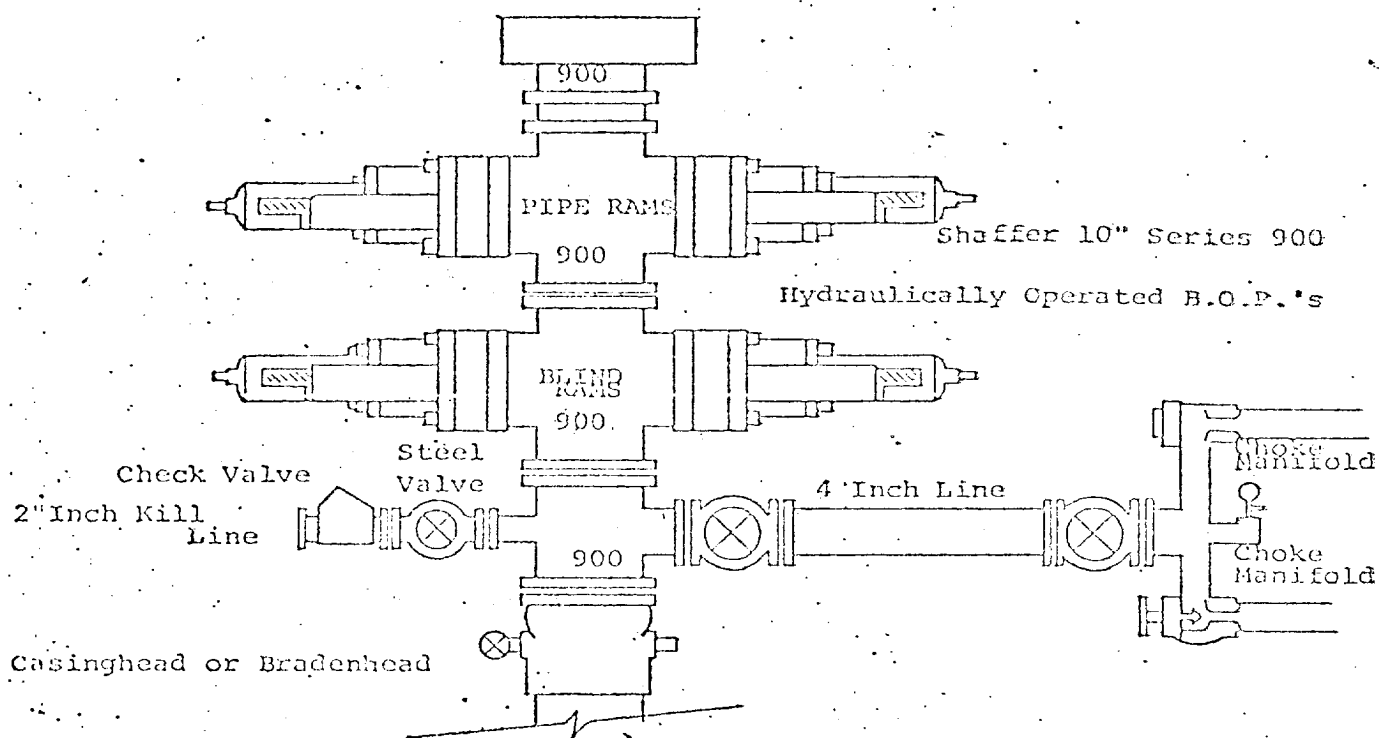
I hereby certify that the information contained herein is true and complete to the best of my knowledge and belief.

Johnny A. Lopez
Name
JOHNNY A. LOPEZ
Position
REGULATORY COORDINATOR
Company
YATES PETROLEUM CORPORATION
Date
10/31/80

I hereby certify that the well location shown on this plat was plotted from field notes of actual surveys made by me or under my supervision, and that the same is true and correct to the best of my knowledge and belief.

Date Surveyed
October 24, 1980
Registered Professional Engineer and/or Land Surveyor
Dan R. Reddy
Certificate No.
NM PERLS #5412





THE FOLLOWING CONSTITUTE MINIMUM BLOWOUT PREVENTER REQUIREMENTS

1. All preventers to be hydraulically operated with secondary manual controls installed prior to drilling out from under casing.
2. Choke outlet to be a minimum of 4" diameter.
3. Kill line to be of all steel construction of 2" minimum diameter.
4. All connections from operating manifolds to preventers to be all steel, hole or tube a minimum of one inch in diameter.
5. The available closing pressure shall be at least 15% in excess of that required with sufficient volume to operate the B.O.P.'s.
6. All connections to and from preventer to have a pressure rating equivalent to that of the B.O.P.'s.
7. Inside blowout preventer to be available on rig floor.
8. Operating controls located a safe distance from the rig floor.
9. Hole must be kept filled on trips below intermediate casing. Operator not responsible for blowouts resulting from not keeping hole full.
10. D. P. float must be installed and used below zone of first gas intrusion.