

NO. OF COPIES RECEIVED	2
DISTRIBUTION	
SANTA FE	1
FILE	1
U.S.G.S.	1
LAND OFFICE	1
OPERATOR	1

RECEIVED
NEW MEXICO OIL CONSERVATION COMMISSION

OCT 31 1980

O.C.D.
ARTESIA, OFFICE

30-015-23528

Form C-101
Revised 1-1-66

5A. Location Type of Lease
STATE ☐ FEDERAL ☒
5. State Oil & Gas Conservation Commission

APPLICATION FOR PERMIT TO DRILL, DEEPEN, OR PLUG BACK

1a. Type of work DRILL <input checked="" type="checkbox"/> DEEPEN <input type="checkbox"/> PLUG BACK <input type="checkbox"/>		7. Joint Agreement Name
b. Type of Well OIL WELL <input checked="" type="checkbox"/> GAS WELL <input type="checkbox"/> OTHER <input type="checkbox"/> SINGLE ZONE <input type="checkbox"/> MULTIPLE ZONE <input type="checkbox"/>		8. Name of Lessee Name Jackson AT
c. Name of Operator Yates Petroleum Corporation		9. Well No. 10
3. Address of Operator 207 South 4th Street, Artesia, NM 88210		10. Field and Pool, or Unit Name Eagle Creek (S.A.)
4. Location of Well UNIT LETTER J LOCATED 1650 FEET FROM THE South LINE AND 2310 FEET FROM THE East LINE OF SEC. 14 TWP. 17S RST. 25E NADCO		11. County Eddy
12. Proposed Depth approx. 1500'		13A. Formation San Andres
13B. Drilling Contractor L&M Drilling Co.		14. Approx. Date Work will start As soon as approved
15. Proposed Casing and Cement Program 3480' GL Blanket		

PROPOSED CASING AND CEMENT PROGRAM

SIZE OF HOLE	SIZE OF CASING	WEIGHT PER FOOT	SETTING DEPTH	SACKS OF CEMENT	EST. TOP
15"	10-3/4"	32#	approx. 330'	Circulate	
9 1/2"	7"	20#	approx. 1180'	Circulate	
6 1/4"	4 1/2" & 5 1/2"	10.5# & 15.5#	approx. 1500'	125 sacks	

Propose to drill a San Andres test with approx. 330' of 10-3/4" casing will be run if needed and cement circulated to shut off surface gravel and cavings. 7" casing will be set 100' below the Artesian zone with cement circulated. Production casing will be run and cemented, perforated and sand frac'd for production.

MUD PROGRAM: FW gel and LCM to 1180', FW to TD.

BOP PROGRAM: BOP's will be installed on 7" casing and will be tested daily.

APPROVAL VALID
FOR 90 DAYS UNLESS
DRILLING COMMENCED,

EXPIRES 2-6-81

IN ABOVE SPACE DESCRIBE PROPOSED PROGRAM: IF PROPOSAL IS TO DEEPEN OR PLUG BACK, GIVE DATA ON PRESENT PRODUCTIVE ZONE AND PROPOSED NEW PRODUCTIVE ZONE. GIVE ALLOWOUT PREVENTER PROGRAM, IF ANY.

I hereby certify that the information above is true and complete to the best of my knowledge and belief.

Signed W. A. Grossett Title Regulatory Coordinator Date 10/16/80

APPROVED BY W. A. Grossett TITLE SUPERVISOR, DISTRICT II DATE NOV 06 1980

CONDITIONS OF APPROVAL, IF ANY:

Cement must be circulated to
surface behind all casing

Notify NMLC of completion
time to within circulating
the 7" casing

N MEXICO OIL CONSERVATION COMMISSION
WELL LOCATION AND ACREAGE DEDICATION PLAT

Form C-102
Supersedes C-128
Effective 1-1-65

All distances must be from the outer boundaries of the Section.

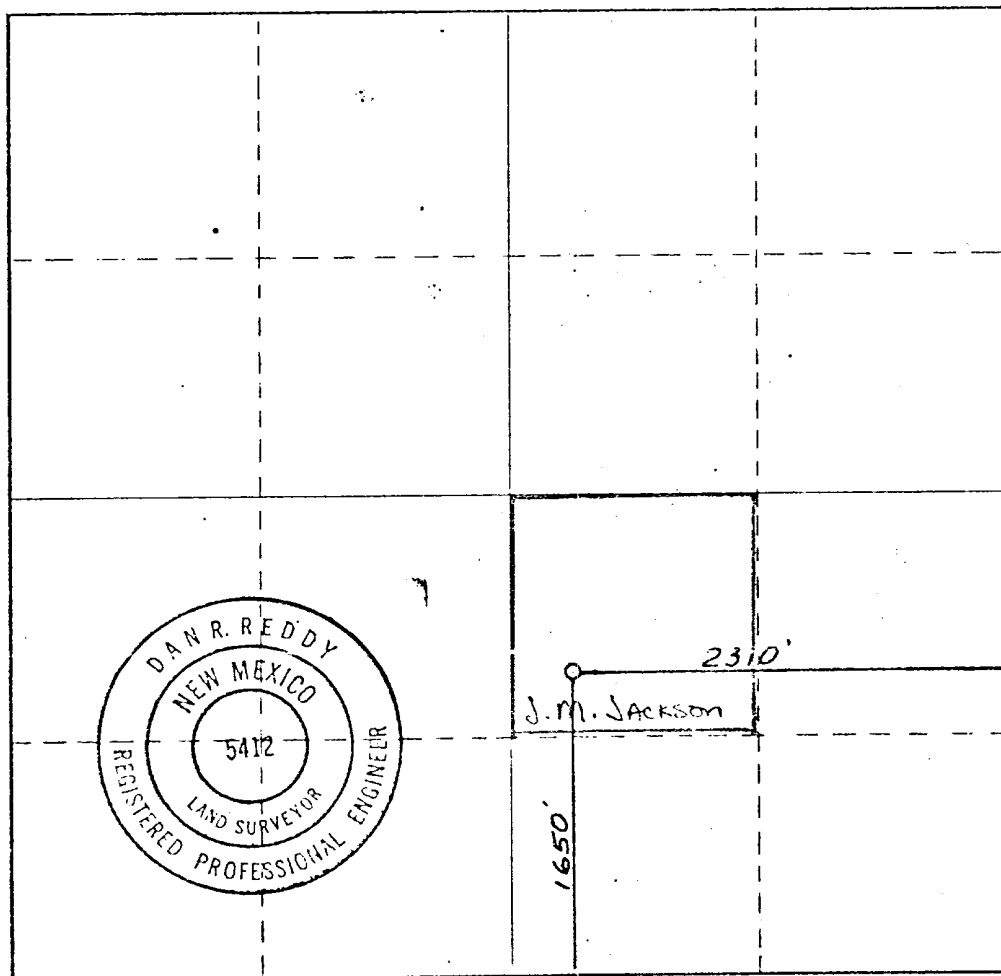
Operator YATES PETROLEUM CORPORATION		Lease Jackson		AT		Well No. 10
Unit Letter J	Section 14	Township 17 South	Range 25 East	County Eddy		
Actual Footage Location of Well: 1650 feet from the South line and 2310 feet from the East line						
Ground Level Elev. 3480.	Producing Formation SAN ANDRES		Pool EAGLE CREEK S.A.		Dedicated Acreage: 40 Acres	

1. Outline the acreage dedicated to the subject well by colored pencil or hatchure marks on the plat below.
2. If more than one lease is dedicated to the well, outline each and identify the ownership thereof (both as to working interest and royalty).
3. If more than one lease of different ownership is dedicated to the well, have the interests of all owners been consolidated by communitization, unitization, force-pooling, etc?

☐ Yes ☐ No If answer is "yes," type of consolidation _____

If answer is "no," list the owners and tract descriptions which have actually been consolidated. (Use reverse side of this form if necessary.) _____

No allowable will be assigned to the well until all interests have been consolidated (by communitization, unitization, forced-pooling, or otherwise) or until a non-standard unit, eliminating such interests, has been approved by the Commission.



CERTIFICATION

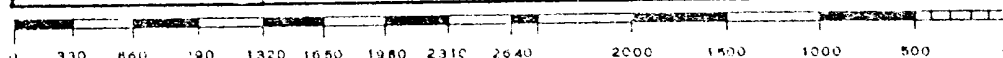
I hereby certify that the information contained herein is true and complete to the best of my knowledge and belief.

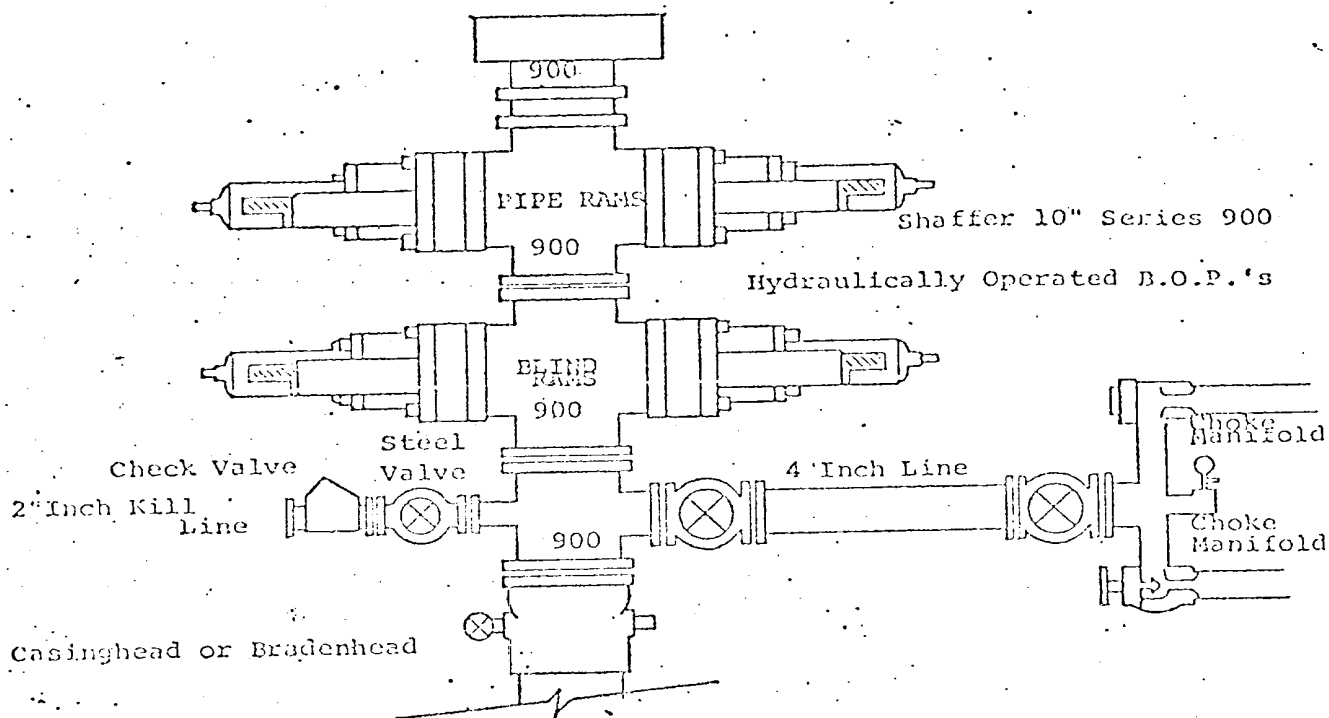
JOHNNY A. LOPEZ
Name
Johnny A. Lopez
Position
REGULATORY COORDINATOR
Company
YATES PETROLEUM CORPORATION
Date
10 / 17 / 80

I hereby certify that the well location shown on this plat was plotted from field notes of actual surveys made by me or under my supervision, and that the same is true and correct to the best of my knowledge and belief.

Date Surveyed
Oct. 12, 1980
Registered Professional Engineer and/or Land Surveyor

Dan R. Reddy
Certificate No.
NM PERLS #5412





THE FOLLOWING CONSTITUTE MINIMUM BLOWOUT PREVENTER REQUIREMENTS

1. All preventers to be hydraulically operated with secondary manual controls installed prior to drilling out from under casing.
2. Choke outlet to be a minimum of 4" diameter.
3. Kill line to be of all steel construction of 2" minimum diameter.
4. All connections from operating manifolds to preventers to be all steel, hole or tube a minimum of one inch in diameter.
5. The available closing pressure shall be at least 15% in excess of that required with sufficient volume to operate the B.O.P.'s.
6. All connections to and from preventer to have a pressure rating equivalent to that of the B.O.P.'s.
7. Inside blowout preventer to be available on rig floor.
8. Operating controls located a safe distance from the rig floor.
9. Hole must be kept filled on trips below intermediate casing. Operator not responsible for blowouts resulting from not keeping hole full.
10. D. P. float must be installed and used below zone of first gas intrusion.