

NO. COPIES RECEIVED	6
DISTRIBUTION	
SANTA FE	1
FILE	1
U.S.G.S.	
LAND OFFICE	
OPERATOR	1

RECEIVED
NEW MEXICO OIL CONSERVATION COMMISSION

30-015-23550

NOV 20 1980
O. C. D.
ARTESIA, OFFICE

5A. Indicate Type of Lease
STATE FEE
5. State Oil & Gas Lease No.
B-1969

APPLICATION FOR PERMIT TO DRILL, DEEPEN, OR PLUG BACK

1a. Type of Work
b. Type of Well
DRILL DEEPEN PLUG BACK
OIL WELL GAS WELL OTHER SINGLE ZONE MULTIPLE ZONE

2. Name of Operator
Collier Energy, Inc. ✓

3. Address of Operator
P.O. Box 798, Artesia, New Mexico 88210

4. Location of Well
UNIT LETTER D LOCATED 362 FEET FROM THE North LINE
AND 330 FEET FROM THE West LINE OF SEC. 22 TWP. 17S RGE. 28E NMPM

7. Unit Agreement Name
8. Farm or Lease Name
State B-1969, Tr. 4
9. Well No.
#27-Y
10. Field and Pool, or Wildcat
West E. Empire V-SA

12. County
Eddy

19. Proposed Depth
800'
19A. Formation
Seven Rivers
20. Rotary or C.T.
Rotary

21. Elevations (Show whether DF, RT, etc.)
3542 GL
21A. Kind & Status Plug. Bond
Statewide
21B. Drilling Contractor
Yucca Drilling Co.
22. Approx. Date Work will start
November 5, 1980

PROPOSED CASING AND CEMENT PROGRAM

SIZE OF HOLE	SIZE OF CASING	WEIGHT PER FOOT	SETTING DEPTH	SACKS OF CEMENT	EST. TOP
7 7/8"	4 1/2"	9 1/2#	800'	250 Sxs.	Surface
11"	8" plastic	2 1/2#	200'		

Plan to drill Seven Rivers well using 11" bit and drill to approximately 200'. Will run 200' of 8" plastic pipe.

Then plan to run 800' of 4 1/2", 9 1/2# casing and circulate with 250 Sxs. of Class C cement to surface.

APPROVAL
APR 21 1981

APPROVAL VALID
FOR 90 DAYS UNLESS
DRILLING COMMENCED,
EXPIRES 2-21-81

ABOVE SPACE DESCRIBE PROPOSED PROGRAM; IF PROPOSAL IS TO DEEPEN OR PLUG BACK, GIVE DATA ON PRESENT PRODUCTIVE ZONE AND PROPOSED NEW PRODUCTIVE ZONE. GIVE BLOWOUT PREVENTER PROGRAM, IF ANY.

hereby certify that the information above is true and complete to the best of my knowledge and belief.
Signed Donald Craig Title President Date 11/19/80

(This space for State Use)
APPROVED BY W. A. Gressett TITLE SUPERVISOR, DISTRICT II DATE NOV 21 1980

CONDITIONS OF APPROVAL, IF ANY:

Notify N.M.O.C.C. in sufficient time to witness cementing
4 1/2" casing

WELL LOCATION AND ACREAGE DEDICATION PLAN

Effective 11-03

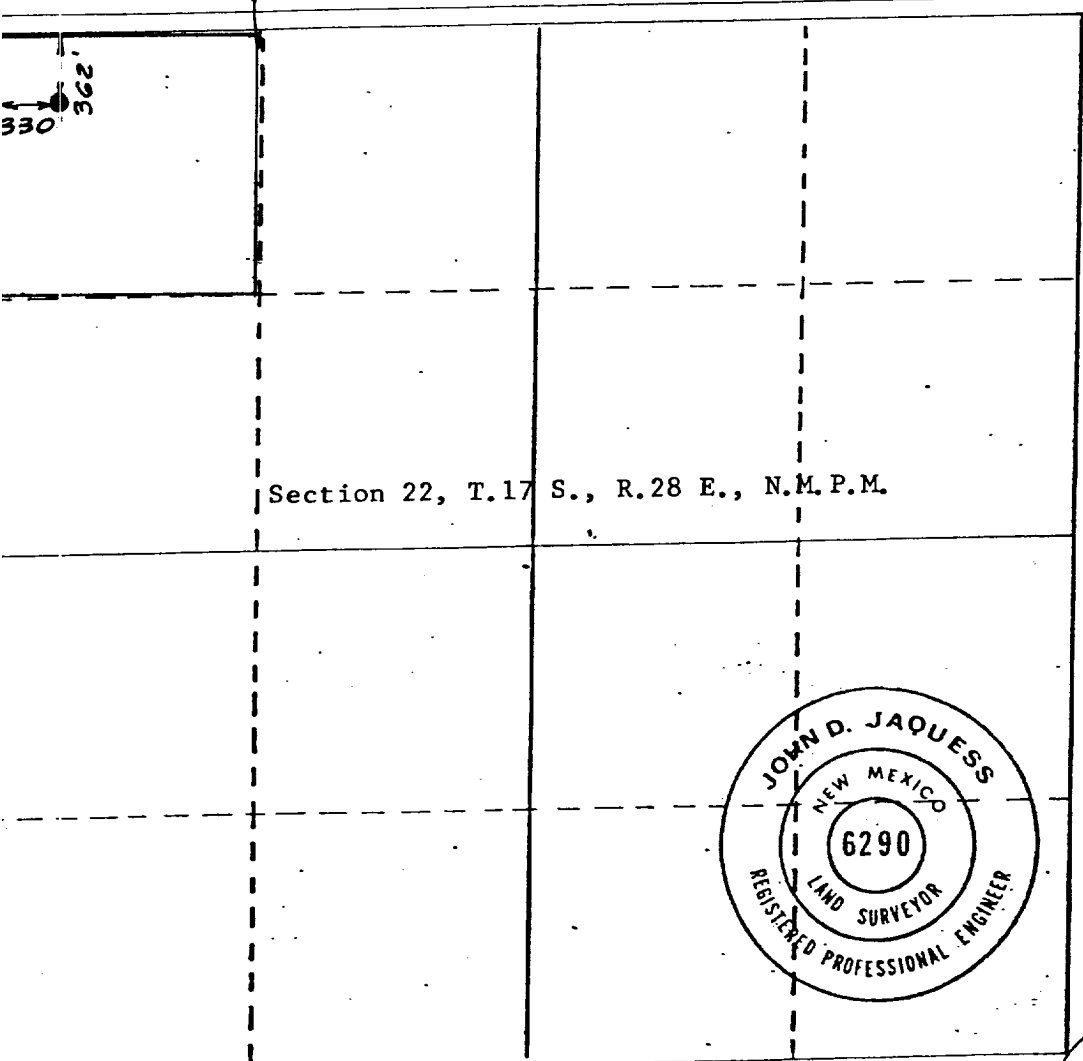
All distances must be from the outer boundaries of the Section.

Operator Collier Energy, Inc.		Lease State B, 1969, Tr. 4		Well No. 27 Y
Well Letter D	Section 22	Township 17 South	Range 28 East	County Eddy
Actual Footage Location of Well: 362 feet from the North line and 330 feet from the West line				
Ground Level Elev. 3542	Producing Formation Seven Rivers	Pool East Empire Yates 7-Rivers	Dedicated Acreage: 40 Acres	

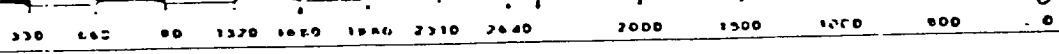
- Outline the acreage dedicated to the subject well by colored pencil or hachure marks on the plat below.
- If more than one lease is dedicated to the well, outline each and identify the ownership thereof (both as to working interest and royalty).
- If more than one lease of different ownership is dedicated to the well, have the interests of all owners been consolidated by communitization, unitization, force-pooling, etc?
 Yes No If answer is "yes," type of consolidation _____

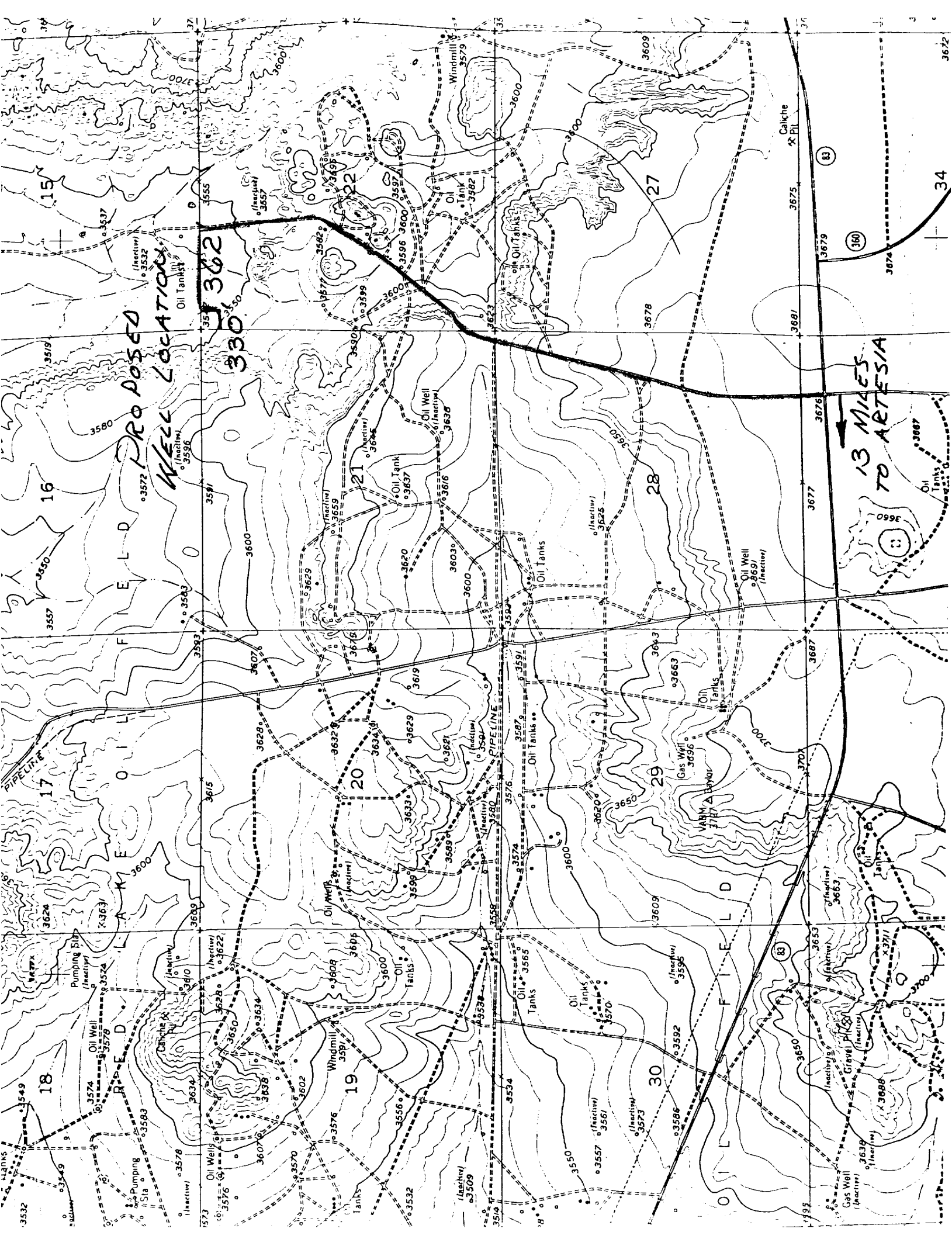
If answer is "no," list the owners and tract descriptions which have actually been consolidated. (Use reverse side of this form if necessary.) _____

No allowable will be assigned to the well until all interests have been consolidated (by communitization, unitization, forced-pooling, or otherwise) or until a non-standard unit, eliminating such interests, has been approved by the Commission.



CERTIFICATION	
I hereby certify that the information contained herein is true and complete to the best of my knowledge and belief.	
Name	<i>Donald R. Craig</i> Donald R. Craig
Position	President
Company	Collier Energy, Inc.
Date	November 19, 1980
I hereby certify that the well location shown on this plat was plotted from field notes of actual surveys made by me or under my supervision, and that the same is true and correct to the best of my knowledge and belief.	
Date Surveyed	November 18, 1980
Registered Professional Engineer and/or Land Surveyor <i>John D. Jaquess</i> John D. Jaquess, P.E. & L.S.	
Certificate No.	6290





FIELD

WELL LOCATION

13 MILES TO ARTESIA

362
330

15

16

17

18

22

21

20

19

27

28

29

30

34

35

36

37

38

39

40

41

3557

3559

3561

3563

3565

3567

3569

3571

3573

3575

3577

3579

3581

3583

3585

3587

3589

3591

3593

3595

3597

3599

3601

3603

3605

3607

3609

3611

3613

3615

3617

3619

3621

3623

3625

3627

3629

3631

3633

3635

3637

3639

3641

3643

3645

3647

3649

3651

3653

3655

3657

3659

3661

3663

3665

3667

3669

3671

3673

3675

3677

3679

3681

3683

3685

3687

3689

3691

3693

3695

3697

3699

3701

3703

3705

3707

3709

3711

3713

3715

3532

3534

3536

3538

3540

3542

3544

3546

3548

3550

3552

3554

3556

3558

3560

3562

3564

3566

3568

3570

3572

3574

3576

3578

3580

3582

3584

3586

3588

3590

3592

3594

3596

3598

3600

3602

3604

3606

3608

3610

3612

3614

3616

3618

3620

3622

3624

3626

3628

3630

3632

3634

3636

3638

3640

3642

3644

3646

3648

3650

3652

3654

3656

3658

3660

3662

3664

3666

3668

3670

3672

3674

3676

3678

3680

3682

3684

3686

3688

3690

3692

3694

3696

3698

3700

3532

3534

3536

3538

3540

3542

3544

3546

3548

3550

3552

3554

3556

3558

3560

3562

3564

3566

3568

3570

3572

3574

3576

3578

3580

3582

3584

3586

3588

3590

3592

3594

3596

3598

3600

3602

3604

3606

3608

3610

3612

3614

3616

3618

3620

3622

3624

3626

3628

3630

3632

3634

3636

3638

3640

3642

3644

3646

3648

3650

3652

3654

3656

3658

3660

3662

3664

3666

3668

3670

3672

3674

3676

3678

3680

3682

3684

3686

3688

3690

3692

3694

3696

3698

3700

3532

3534

3536

3538

3540

3542

3544

3546

3548

3550

3552

3554

3556

3558

3560

3562

3564

3566

3568

3570

3572

3574

3576

3578

3580

3582

3584

3586

3588

3590

3592

3594

3596

3598

3600

3602

3604

3606

3608

3610

3612

3614

3616

3618

3620

3622

3624

3626

3628

3630

3632

3634

3636