

NO. OF COPIES RECEIVED	
DISTRIBUTION	
SANTA FE	
FILE	
U.S.G.S.	
LAND OFFICE	
OPERATOR	

NEW MEXICO OIL CONSERVATION COMMISSION

JAN 27 1981

30-015-23633
Form C-101
Revised 1-1-65

5A. Indicate Type of Lease
STATE ☐ FEE ☐
5. State Oil & Gas Lease No.

APPLICATION FOR PERMIT TO DRILL, DEEPEN, OR PLUG BACK

1a. Type of Work b. Type of Well OIL WELL <input checked="" type="checkbox"/> GAS WELL <input type="checkbox"/> OTHER <input type="checkbox"/> SINGLE ZONE <input type="checkbox"/> MULTIPLE ZONE <input type="checkbox"/>		7. Unit Agreement Name	
2. Name of Operator Yates Petroleum Corporation		8. Farm or Lease Name Gissler AV	
3. Address of Operator 207 South 4th Street, Artesia, New Mexico 88210		9. Well No. 26	
4. Location of Well UNIT LETTER L LOCATED 1650 FEET FROM THE South LINE AND 330 FEET FROM THE West LINE OF SEC. 23 TWP. 175 RGT. 25E NMPM		10. Field and Pool, or Wildcat Eagle Creek S.A.	
		12. County Eddy	
		19. Proposed Depth approx. 1500'	
		19A. Formation San Andres	
		20. Rotary or Casing Rotary	
21. Elevations (Show whether DF, RT, etc.) 3511 GL		21A. Kind & Status Plug. Bond Blanket	
		21B. Drilling Contractor Larue Drilling Co.	
		22. Approx. Date Work will start Soon after approval	

23. PROPOSED CASING AND CEMENT PROGRAM

SIZE OF HOLE	SIZE OF CASING	WEIGHT PER FOOT	SETTING DEPTH	SACKS OF CEMENT	EST. TO
15"	10 3/4"	32#	approx. 350'	200 circulate	
9 7/8"	7"	30#	approx. 1150'	700 circulate	
6 1/2"	4 1/2" & 5 1/2"	10.5# & 15.5#	approx. 1500'	150 sacks	

Propose to drill a San Andres test. Approximately 350' of 10 3/4" casing will be run and cemented to the surface to shut off gravel and coving, and 7" casing will be run 100' below the Artesian Zone, cemented to the surface. A tapered oil string will be run and cemented, perforated and sand frac'd for production.

MUD PROGRAM: Fresh water, mud w/LCM from surface to 1150', fresh water to total depth.

BOP PROGRAM: BOP's to be installed on 7" casing and tested daily for operational.

APPROVAL VALID FOR 180 DAYS
PERMIT EXPIRES 7-29-81
UNLESS DRILLING UNDERWAY

IN ABOVE SPACE DESCRIBE PROPOSED PROGRAM: IF PROPOSAL IS TO DEEPEN OR PLUG BACK, GIVE DATA ON PRESENT PRODUCTIVE ZONE AND PROPOSED PRODUCTIVE ZONE. GIVE BLOWOUT PREVENTER PROGRAM, IF ANY.

I hereby certify that the information above is true and complete to the best of my knowledge and belief.
Signed Alvin R. [Signature] Title Geographer Date 1-24-81
(This space for State Use)

APPROVED BY W.A. Gressitt TITLE SUPERVISOR OF PERMITTING DATE JAN 29 1981

CONDITIONS OF APPROVAL, IF ANY:
Cement must be circulated to surface behind all casing
Not less than 100' in sufficient thickness of casing
the 7" casing

NEW MEXICO OIL CONSERVATION COMMISSION
WELL LOCATION AND ACREAGE DEDICATION PLAT

Form C-102
Supersedes C-101
Effective 1-1-77

All distances must be from the outer boundaries of the Section.

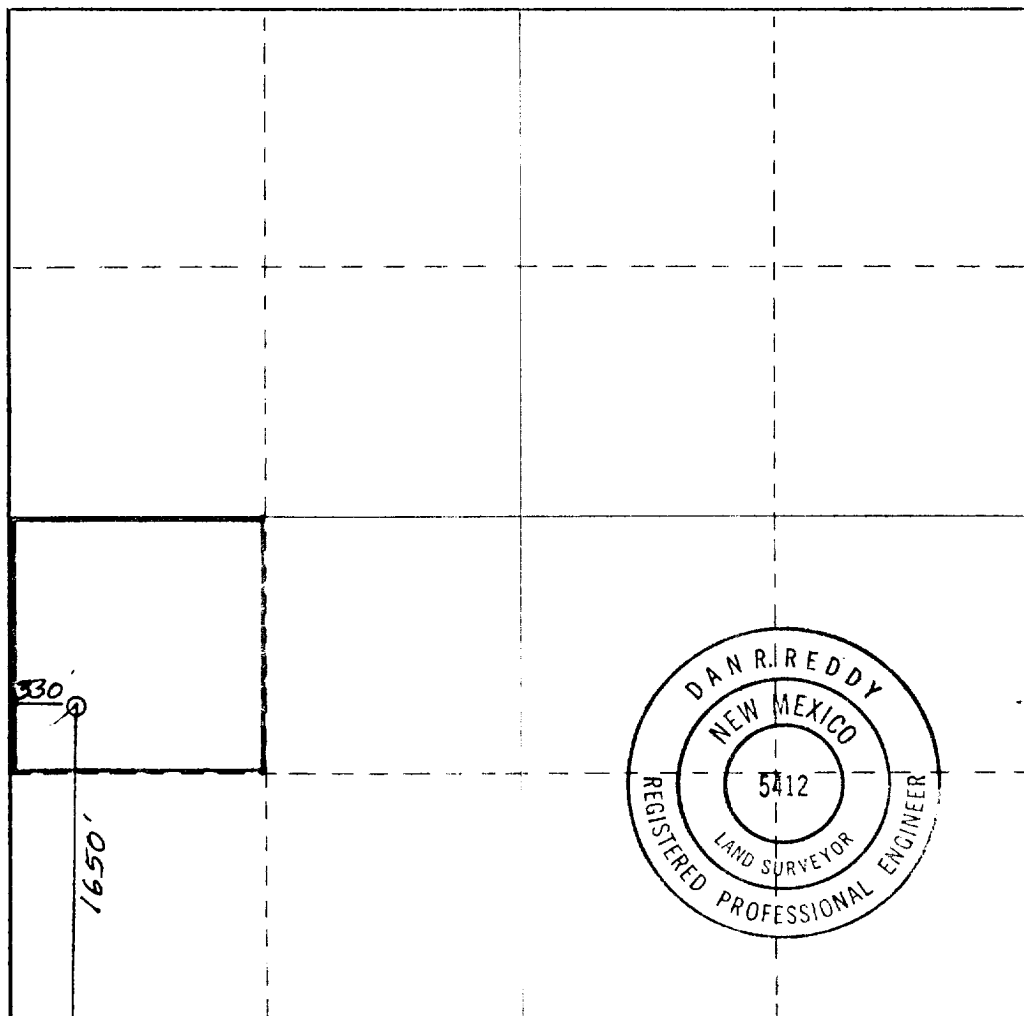
Operator YATES PETROLEUM CORPORATION		Lease Gissler AV		Well No. 26
Unit Letter L	Section 23	Township 17 South	Range 25 East	County Eddy
Actual Package Location of Well: 1650 feet from the South line and 330 feet from the West line				
Ground Level Elev. 3511.	Producing Formation SAN ANDRES	Pool EAGLE CREEK S.A.	Dedicated Acreage: 40	

1. Outline the acreage dedicated to the subject well by colored pencil or hatchure marks on the plat below.
2. If more than one lease is dedicated to the well, outline each and identify the ownership thereof (both as to working interest and royalty).
3. If more than one lease of different ownership is dedicated to the well, have the interests of all owners been consolidated by communitization, unitization, force-pooling, etc?

☐ Yes ☐ No If answer is "yes" type of consolidation _____

If answer is "no," list the owners and tract descriptions which have actually been consolidated. (Use reverse side of this form if necessary.) _____

No allowable will be assigned to the well until all interests have been consolidated (by communitization, unitization, forced-pooling, or otherwise) or until a non-standard unit, eliminating such interests, has been approved by the Commission.



CERTIFICATION

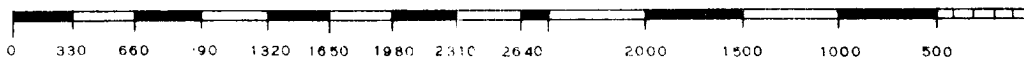
I hereby certify that the information contained herein is true and complete to the best of my knowledge and belief.

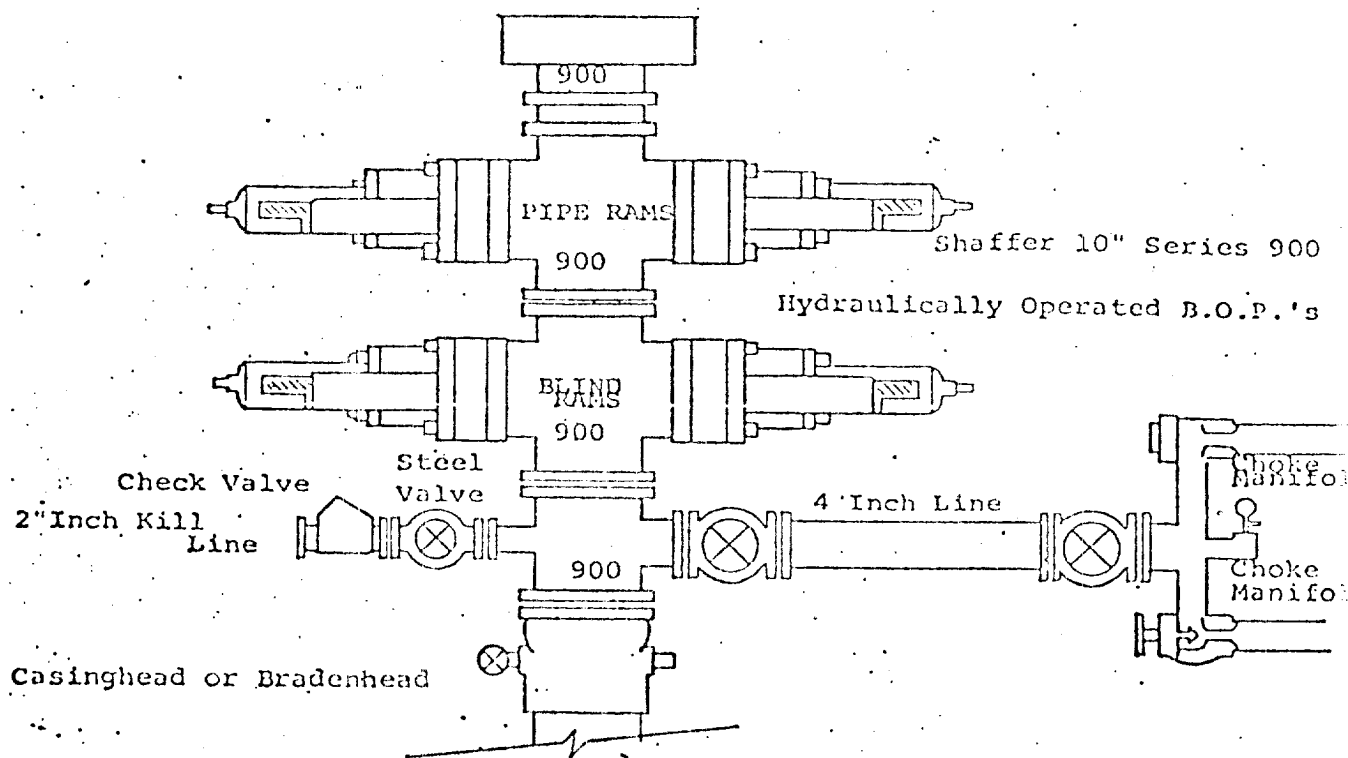
Gliserio Rodriguez
Name
GLISERIO RODRIGUEZ
Position
GEOGRAPHER
Company
YATES PETROLEUM CORP.
Date
1-26-81

I hereby certify that the well location shown on this plat was plotted from field notes of actual surveys made by me or under my supervision, and that the same is true and correct to the best of my knowledge and belief.

Date Surveyed
January 24, 1981
Registered Professional Engineer and/or Land Surveyor

Dan R. Reddy
Certificate No.
NM PE&LS #5412





THE FOLLOWING CONSTITUTE MINIMUM BLOWOUT PREVENTER REQUIREMENTS

1. All preventers to be hydraulically operated with secondary manual control installed prior to drilling out from under casing.
2. Choke outlet to be a minimum of 4" diameter.
3. Kill line to be of all steel construction of 2" minimum diameter.
4. All connections from operating manifolds to preventers to be all steel. hole or tube a minimum of one inch in diameter.
5. The available closing pressure shall be at least 15% in excess of that required with sufficient volume to operate the B.O.P.'s.
6. All connections to and from preventer to have a pressure rating equivalent to that of the B.O.P.'s.
7. Inside blowout preventer to be available on rig floor.
8. Operating controls located a safe distance from the rig floor.
9. Hole must be kept filled on trips below intermediate casing. Operator not responsible for blowouts resulting from not keeping hole full.
10. D. P. float must be installed and used below zone of first gas intrusion.