

UNITED STATES
DEPARTMENT OF THE INTERIOR
GEOLOGICAL SURVEY

30-015-23653

APPLICATION FOR PERMIT TO DRILL, DEEPEN, OR PLUG BACK

1a. TYPE OF WORK

DRILL ☒DEEPEN ☐PLUG BACK ☐

b. TYPE OF WELL

OIL
WELL ☒GAS
WELL ☐OTHER ☐SINGLE
ZONE ☐MULTIPLE
ZONE ☐

2. NAME OF OPERATOR

Forister-Sweatt

3. ADDRESS OF OPERATOR

PO Box 161, Artesia, NM 88210

4. LOCATION OF WELL (Report location clearly and in accordance with any State requirements.)*

At surface

At proposed prod. zone 1980 FSL 660 FEL

14. DISTANCE IN MILES AND DIRECTION FROM NEAREST TOWN OR POST OFFICE*

8 miles northwest of Loco Hills

15. DISTANCE FROM PROPOSED*

LOCATION TO NEAREST
PROPERTY OR LEASE LINE, FT.
(Also to nearest drig. unit line, if any)

660'

16. NO. OF ACRES IN LEASE

680

17. NO. OF ACRES ASSIGNED

TO THIS WELL 40

18. DISTANCE FROM PROPOSED LOCATION*
TO NEAREST WELL, DRILLING, COMPLETED,
OR APPLIED FOR, ON THIS LEASE, FT.

none

19. PROPOSED DEPTH

2850

20. ROTARY OR CABLE TOOLS

Cable Tools

21. ELEVATIONS (Show whether DF, RT, GR, etc.)

3633.1 C.R.

22. APPROX. DATE WORK WILL START*

Feb. 20, 1981

23.

PROPOSED CASING AND CEMENTING PROGRAM

SIZE OF HOLE	SIZE OF CASING	WEIGHT PER FOOT	SETTING DEPTH	QUANTITY OF CEMENT
10 1/2"	8 5/8"	24	300	175 sx "C" - circulate
8"	4 1/2"	9.5	2850	125 sx lite, 150 sx Class C

We propose to drill and test the San Andres and intermediate formations. Approximately 300' ft. of surface casing will be set. 4 1/2" production casing will be run, perforated, and possible sand frac'd for production.

BOP Program - Cable Tool control head will be used in drilling this well. RECEIVED

MUD Program - Fresh water to T.D.

FEB 04 1981

O. C. D.
ARTESIA OFFICE

IN ABOVE SPACE DESCRIBE PROPOSED PROGRAM: If proposal is to deepen or plug back, give data on present productive zone and proposed new productive zone. If proposal is to drill or deepen directionally, give pertinent data on subsurface locations and measured and true vertical depths. Give blowout preventer program, if any.

24.

SIGNED

TITLE

Operator

DATE

1/20/81

(This space for Federal or State office use)

PERMIT NO.

APPROVAL DATE

APPROVED BY

TITLE

DISTRICT ENGINEER

DATE

FEB 05 1981

CONDITIONS OF APPROVAL, IF ANY:

*See Instructions On Reverse Side

N MEXICO OIL CONSERVATION COMMISS
WELL LOCATION AND ACREAGE DEDICATION PLAT

Form C-102
 Supersedes C-128
 Effective 1-1-65

All distances must be from the outer boundaries of the Section

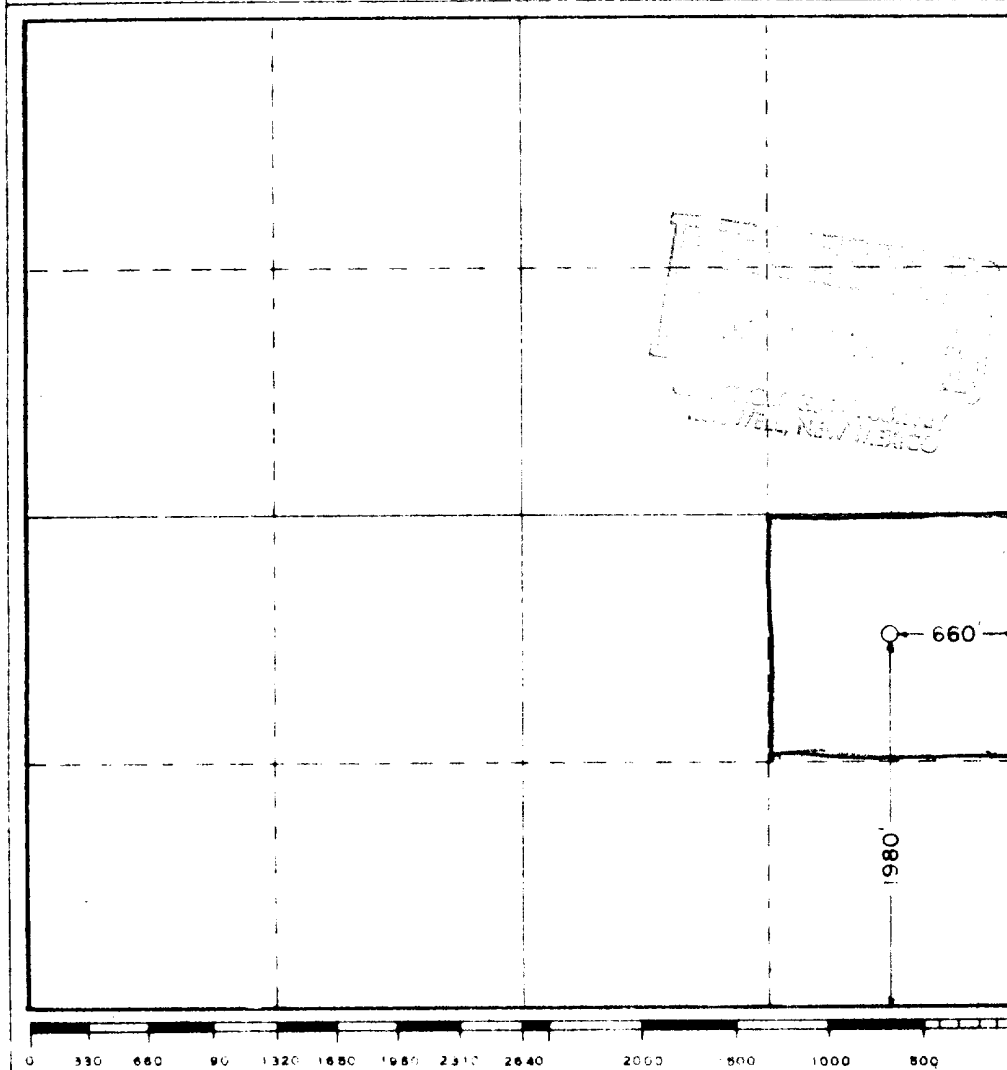
Operator FORISTER-SWEATT			Lease W-1-Bear Draw		Well No. 1
Unit Letter I	Section 28	Township 16 South	Range 29 East	County Eddy	
Actual Footage Location of Well: 1980 feet from the South line and 660 feet from the East line					
Ground Level Elev. 3633.1	Producing Formation S.A.	Pool Bear Draw Q-4 SA		Dedicated Acreage: 40 Acres	

1. Outline the acreage dedicated to the subject well by colored pencil or hachure marks on the plat below.
2. If more than one lease is dedicated to the well, outline each and identify the ownership thereof (both as to working interest and royalty).
3. If more than one lease of different ownership is dedicated to the well, have the interests of all owners been consolidated by communitization, unitization, force-pooling, etc?

☐ Yes ☐ No If answer is "yes," type of consolidation _____

If answer is "no," list the owners and tract descriptions which have actually been consolidated. (Use reverse side of this form if necessary.) _____

No allowable will be assigned to the well until all interests have been consolidated (by communitization, unitization, forced-pooling, or otherwise) or until a non-standard unit, eliminating such interests, has been approved by the Commission.



CERTIFICATION

I hereby certify that the information contained herein is true and complete to the best of my knowledge and belief.

Clarence Forister

Name
Clarence Forister

Position
Partner

Company
Forister-Sweatt

Date
1/20/81

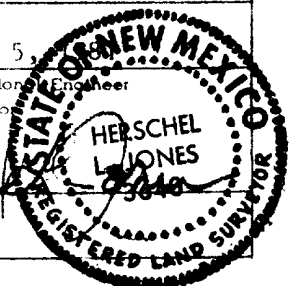
I hereby certify that the well location shown on this plat was plotted from field notes of actual surveys made by me or under my supervision, and that the same is true and correct to the best of my knowledge and belief.

Date Surveyed

January 5,

Registered Professional Engineer
 and/or Land Surveyor

Herschel Jones
 Certificate No.
3640



Forister-Sweatt
PO Box 161
Artesia, N.M. 88210

APPLICATION FOR DRILLING

Forister-Sweatt
Bear Draw #1
Sec 28 T16S R29E
1980 FSI 660 FEL
Eddy County, New Mexico
Lease: NM 15007

In conjunction with Form 9-331C, Application for Permit to Drill subject well, Forister-Sweatt submits the following items of pertinent information in accordance with USGS requirements.

1. The geologic surface formation is Sandy Alluvium.
2. The estimated tops of geologic markers are as follows:

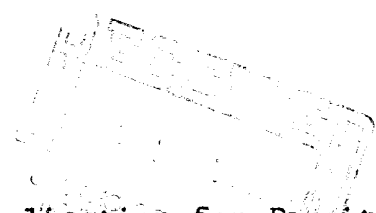
Seven Rivers	1150'
Penrose	1900'
Metex	2210'
Premier	2390'
Lovington	2520'
San Andres	2650'

3. The estimated depths at which anticipated water, oil or gas formations are expected to be encountered:

Water: Approx. 200'
Oil or Gas: 2700'

4. Proposed Casing Program: See Form 9-331C.
5. Pressure Control Equipment: See Form 9-331C
6. Mud Program: See Form 9-331C.
7. Auxillary Equipment: Blowout Preventor.
8. Testing, Logging and Coring Program:
Logging: Gamma-Nertron log before casing is set.
9. No abnormal pressures are anticipated.
10. Anticipated starting date: 2/15/81.
Anticipated completion date: 3/15/81.

Forister-Sweatt
Pear Draw #1
Sec 28 T16S R29E
1980 FSL 660 FEL
(Developmental Well)



This plan is submitted with Form 9-331C, Application for Permit to Drill, covering the above described well. The purpose of this plan is to describe the location of the proposed well, the proposed construction activities and operations plan, the magnitude of surface disturbance involved, and the procedures to be followed in rehabilitating the surface after completion of the operations, so that a complete appraisal can be made of the environmental effect associated with the operation.

1. EXISTING ROADS.

Exhibit A is a portion of a USGS topographic map showing the wells and roads in the vicinity of the proposed location. The proposed wellsite is located approximately 8 miles northwest of Loco Hills, New Mexico and the access route to the location is Exhibit A.

DIRECTIONS:

1. Proceed east from Artesia on Highway 82 for a distance of approximately 20 miles. See Exhibit B.
2. Turn north on to County Road for approximately 4.6 miles. Take right hand existing abandoned road at yellow flag marker, go 1000 ft. to dry hole marker in SW SE Sec 28.
3. New road proceeds northeast from dry hole 2000 ft. to Pear Draw #1.

2. PLANNED ACCESS ROAD.

- A. The proposed new access will be approximately 2000' in length from point of origin to the edge of the drilling pad. The road will lie in a northeast-southwest direction.
- B. The new road will be 12 feet in width (driving surface).
- C. The new road will be bladed and crowned, with drainage on one side.
- D. The new road has been flagged and the route of the road is clearly visible.

3. LOCATION OF EXISTING WELLS.

- A. Drilling activity, mostly shallow wells within a one-mile radius of the wellsite is shown on Exhibit C.

4. LOCATION OF EXISTING AND/OR PROPOSED FACILITIES.

- A. There are no production facilities on this lease at the present time.
- B. In the event that the well is productive, the necessary production facilities will be installed on the drilling pad. If the well is productive oil, a gas or diesel self-contained unit will be used to provide the necessary power. No power will be required of the well if productive of gas.

5. LOCATION AND TYPE OF WATER SUPPLY.

- A. It is planned to drill the proposed well with a fresh water system. The water will be obtained from commercial sources and will be hauled to the location by truck over the existing and proposed roads shown in Exhibit A.

6. SOURCE OF CONSTRUCTION MATERIALS.

- A. Location and road will be leveled, water bladed and compacted with natural materials at site. No Caliche will be used.

7. METHODS OF HANDLING WASTE DISPOSAL.

- A. Drill cuttings will be disposed of in the reserve pits.
- B. Drilling fluids will be allowed to evaporate in the reserve pits until the pits are dry.
- C. Water produced during operations will be collected in tanks until hauled to an approved disposal system, or separate disposal application will be submitted to the USGS for appropriate approval.
- D. Oil produced during operation will be stored in tanks until sold.
- E. Current laws and regulations pertaining to the disposal of human waste will be complied with.
- F. Trash, waste paper, garbage and junk will be buried in a separate trash pit and covered with a minimum of 24 inches dirt. All waste material will be contained to prevent scattering by the wind.

- G. All trash and debris will be buried or removed from the wellsite within 30 days after finishing drilling and/or completion operations.

8. ANCILLARY FACILITIES.

- A. None required.

9. WELLSITE LAYOUT.

- A. Exhibit D shows the relative location and dimensions of well pad, the reserve pits, etc.
- B. The location surface is undulating, minor cuts or fills will be needed in the pad area.
- C. The reserve pits will be plastic lined.
- D. A 400' x 400' area has been staked and flagged.

10. PLANS FOR RESTORATION OF THE SURFACE.

- A. After finishing drilling and/or completion operations, all equipment and other material not needed for further operations will be removed. The location will be cleaned of all trash and junk to leave the wellsite in as aesthetically pleasing a condition as possible.
- B. Unguarded pits, if any, containing fluids will be fenced until they have been filled.
- C. If the proposed well is non-productive, all rehabilitation and/or vegetation requirements of the BLM and USGS will be complied with and will be accomplished as expeditiously as possible. All pits will be filled leveled within 90 days after abandonment.

11. OTHER INFORMATION.

- A. Topography: The land surface in the vicinity of the wellsite is in sand dunes. The immediate area of the wellsite is discussed above in paragraph 9E.
- B. Flora and Fauna: The vegetation cover consists of prairie grass, prairie flowers, reasewood and miscellaneous desert growth. No wildlife was observed but the wildlife in the area probably includes those typical of semi-arid desert land. The area is used for cattle grazing.
- C. There are no ponds, lakes, or rivers in the area.
- D. There are no inhabited dwellings in the vicinity of the proposed well.
- E. Surface Ownership: The wellsite is on federal surface..
- F. There is no evidence of any archeological, historical, or cultural sites in the area. See Arch. Report.

12. OPERATOR'S REPRESENTATIVE.


- A. The field representatives responsible for assuring compliance with the approved surface plan are:

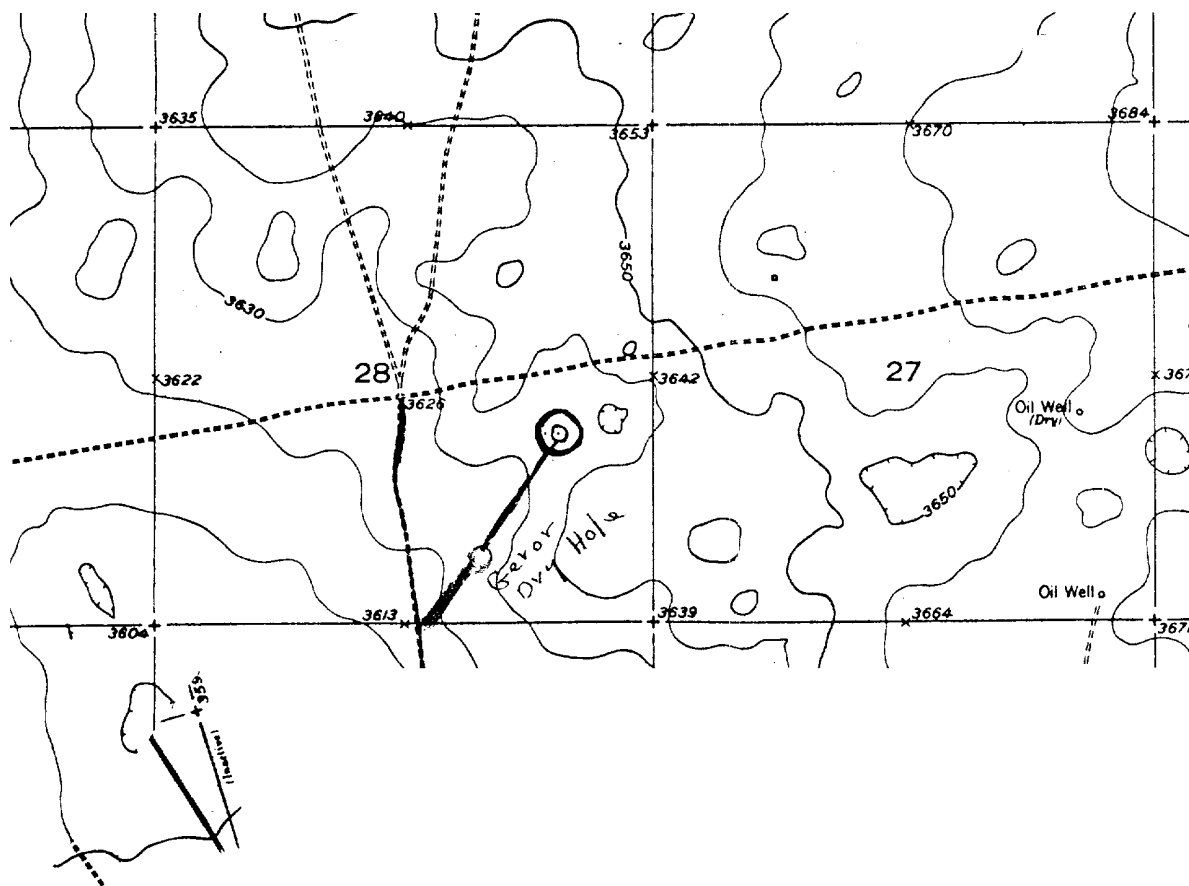
Clarence Forister
Forister-Sweatt
PO Box 151
Artesia, NM 88210
(505) 746-3344

13. CERTIFICATION.

I hereby certify that I, or persons under my direct supervision, have inspected the proposed drillsite and access route, that I am familiar with the conditions which presently exist; that the statements made in this plan are to the best of my knowledge, true and correct; and, that the work associated with the operations proposed herein will be performed by Forister-Sweatt and its subcontractors in conformity with this plan and the terms and conditions under which it is approved.

1-20-81
Date


Clarence Forister, Operator



EX 11, "A"

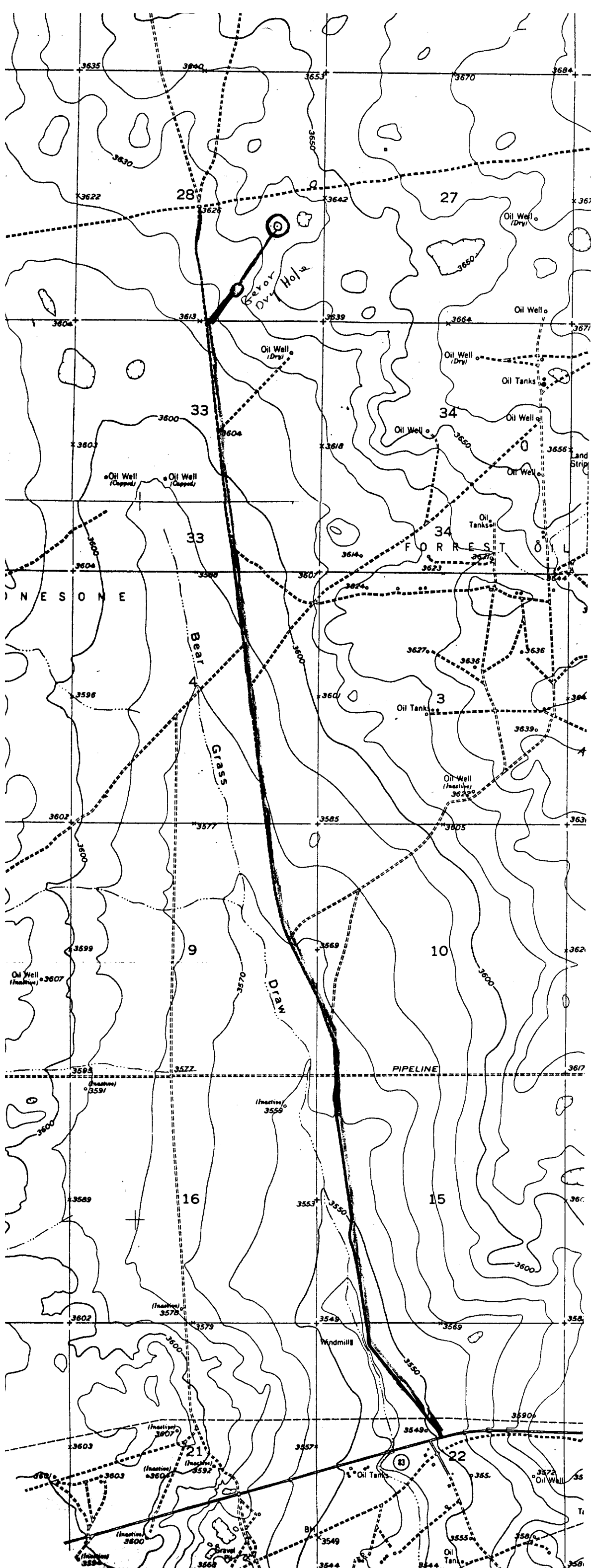
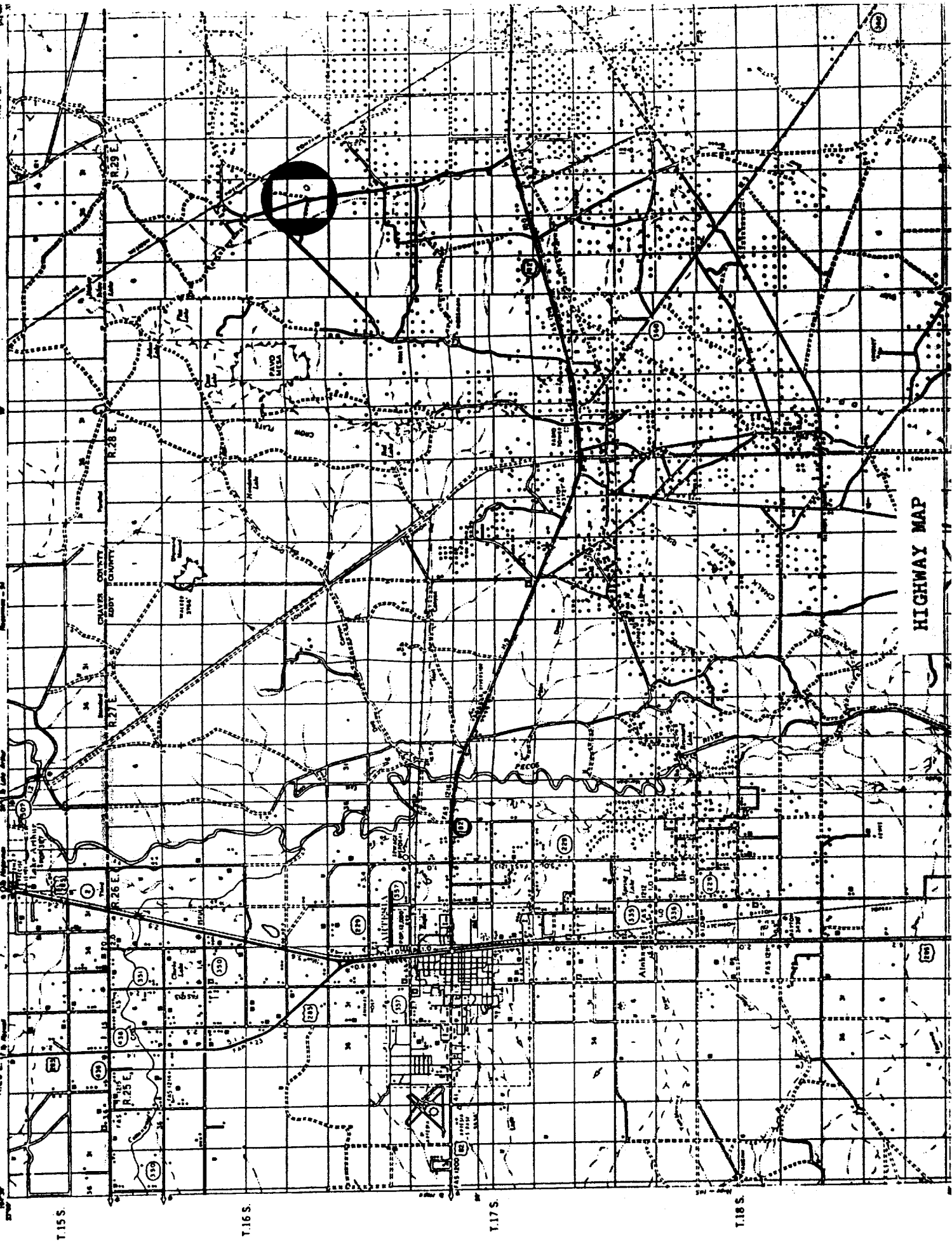


Exhibit "A"

Existing Roads
New Road 2000'
x 12' wide

Exhibit "B"



HIGHWAY MAP

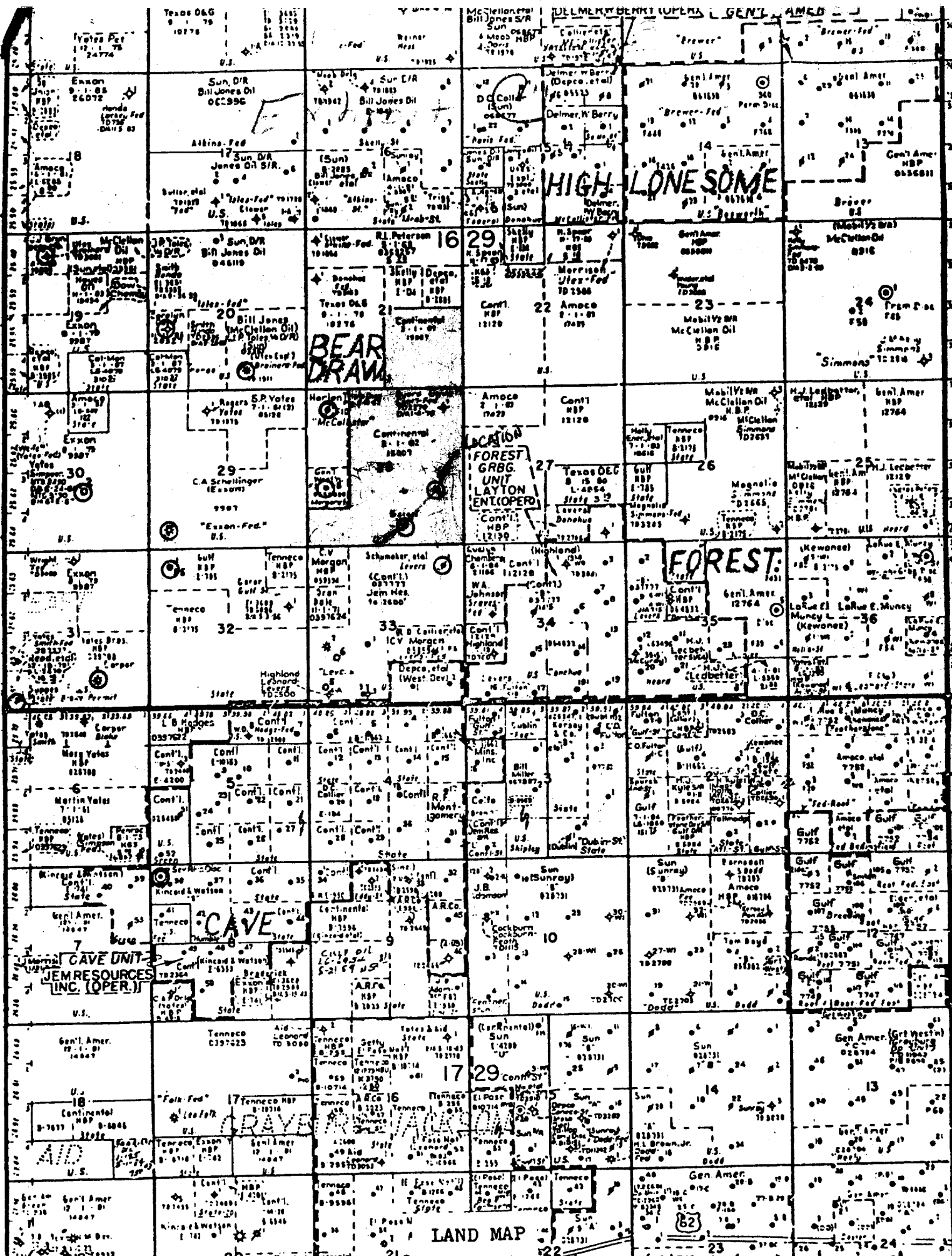


Exhibit D
Court 2 Drilling Co.

Rig #1

Platt - Drilling Rig & mud pits

