

NO. OF COPIES RECEIVED	
DISTRIBUTION	
STATE	1
FILE	1
U.S.G.S.	2
LAND OFFICE	
OPERATOR	1

NEW MEXICO OIL CONSERVATION COMMISSION

RECEIVED

MAR 03 1981

O. C. D.

30-015-23684

Form C-101
Revised 1-1-65

5A. Indicate Type of Lease
STATE <input type="checkbox"/> FEE <input checked="" type="checkbox"/>

5. State Oil & Gas Lease No.

APPLICATION FOR PERMIT TO DRILL, DEEPEN, OR PLUG BACK

a. Type of Work

DRILL ☒

DEEPEN ☐

PLUG BACK ☐

b. Type of Well

OIL WELL ☒

GAS WELL ☐

OTHER

SINGLE ZONE ☐

MULTIPLE ZONE ☐

c. Name of Operator

Yates Petroleum Corporation

d. Address of Operator

207 S. 4th Street, Artesia, NM 88210

e. Location of Well

UNIT LETTER E I LOCATED 1650 FEET FROM THE South LINE

330 FEET FROM THE East LINE OF SEC. 25 TWP. 16S RGE. 25E NMPM

7. Unit Agreement Name

8. Farm or Lease Name

McMurtry "OH"

9. Well No.

1

10. Field and Pool, or Wildcat

Wildcat
Under San Andres

12. County

Eddy

19. Proposed Depth

Approx. 1500'

19A. Formation

San Andres

20. Rotary or C.T.

Rotary

11. Elevations (Show whether DF, RT, etc.)

3462'

21A. Kind & Status Plug. Bond

Blanket

21B. Drilling Contractor

Artesia Fishing Tool

22. Approx. Date Work will start

3-3-81

Lease expires 3-3-81

PROPOSED CASING AND CEMENT PROGRAM

SIZE OF HOLE	SIZE OF CASING	WEIGHT PER FOOT	SETTING DEPTH	SACKS OF CEMENT	EST. TOP
15"	10 3/4"	32#	Approx. 400'	370 sx.	circulate
9 1/2"	7"	20#	Approx. 1250'	850 sx.	circulate
6 1/4"	4 1/2"	9.5#	TD	250 sx.	

Propose to drill and test the S.A. intermediate formations. Casing will be set at least 100' below the Artesian Water Zone, and a 4 1/2" production string will be set at TD, all casing circulate to the surface. Will perforate and stimulate as needed for production.

400 PROGRAM: F.W. gel to 1250, fresh water to TD.

TOP PROGRAM: BOP's will be installed on the 7' casing and tested, pipe rams tested daily for operational, blind rams on trips.

APPROVAL VALID FOR 180 DAYS
PERMIT EXPIRES 9-3-81
UNLESS DRILLING UNDERWAY

ABOVE SPACE DESCRIBE PROPOSED PROGRAM: IF PROPOSAL IS TO DEEPEN OR PLUG BACK, GIVE DATA ON PRESENT PRODUCTIVE ZONE AND PROPOSED NEW PRODUCTION ZONE. GIVE BLOWOUT PREVENTER PROGRAM, IF ANY.

I hereby certify that the information above is true and complete to the best of my knowledge and belief.

Signed [Signature] Title Geographer Date 3-3-81

(This space for State Use)

APPROVED BY [Signature] TITLE SUPERVISOR, DISTRICT II DATE 3-3-81

CONDITIONS OF APPROVAL, IF ANY:

Cement must be circulated to surface behind all casing

Notify N.M.O.C.C. in sufficient time to witness cementing the 7" casing

NEW MEXICO OIL CONSERVATION COMMISSION
WELL LOCATION AND ACREAGE DEDICATION PLAT

Form C-102
Supersedes C-128
Effective 1-1-65

All distances must be from the outer boundaries of the Section.

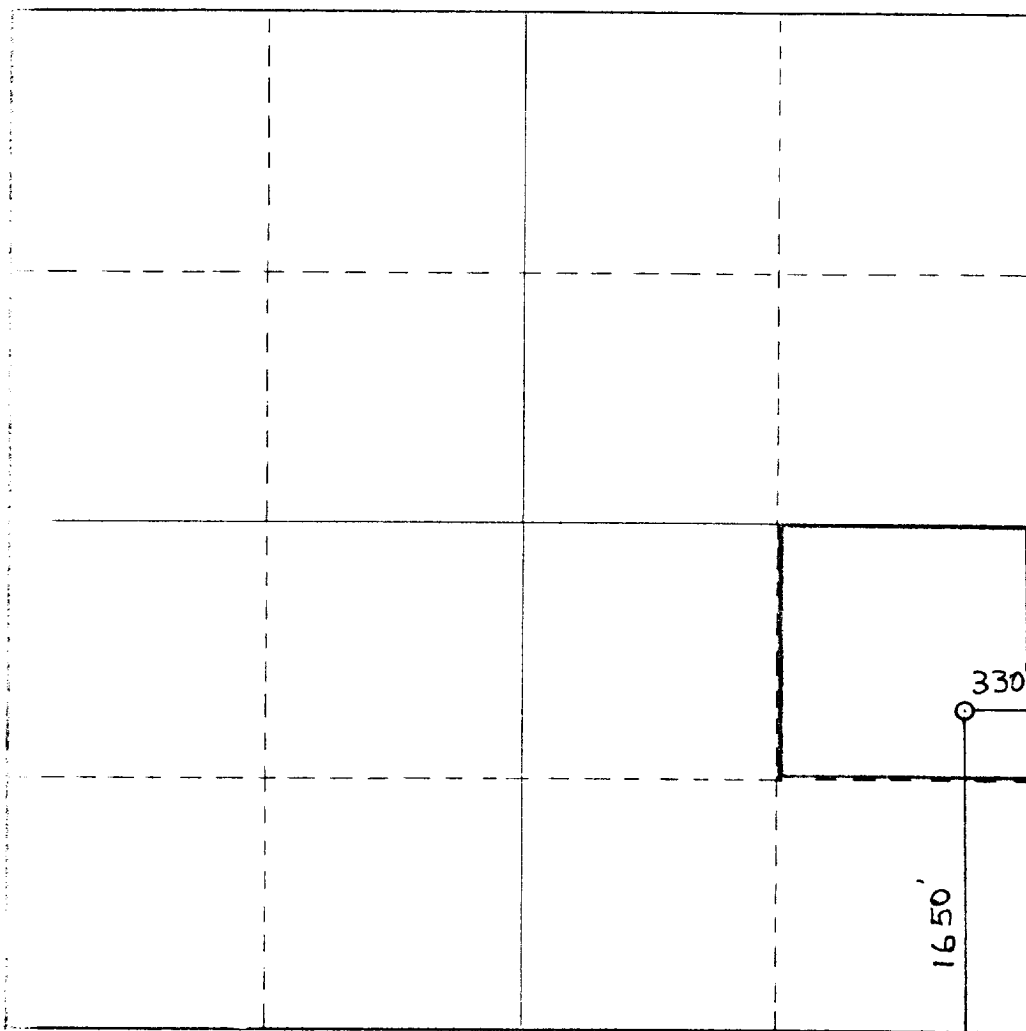
Operator YATES PETROLEUM CORPORATION			Lease McMURTRY "QH"		Well No. 1
Unit Letter I	Section 25	Township 16	Range 25	County EDDY	
Actual Footage Location of Well: 1650' feet from the SOUTH line and 330' feet from the EAST line					
Ground Level Elev. 3455	Producing Formation SAN ANDRES		Pool UNDES. SAN ANDRES		Dedicated Acreage: 40 Acres

1. Outline the acreage dedicated to the subject well by colored pencil or hatchure marks on the plat below.
2. If more than one lease is dedicated to the well, outline each and identify the ownership thereof (both as to working interest and royalty).
3. If more than one lease of different ownership is dedicated to the well, have the interests of all owners been consolidated by communitization, unitization, force-pooling, etc?

☐ Yes ☐ No If answer is "yes," type of consolidation _____

If answer is "no," list the owners and tract descriptions which have actually been consolidated. (Use reverse side of this form if necessary.) _____

No allowable will be assigned to the well until all interests have been consolidated (by communitization, unitization, forced-pooling, or otherwise) or until a non-standard unit, eliminating such interests, has been approved by the Commission.



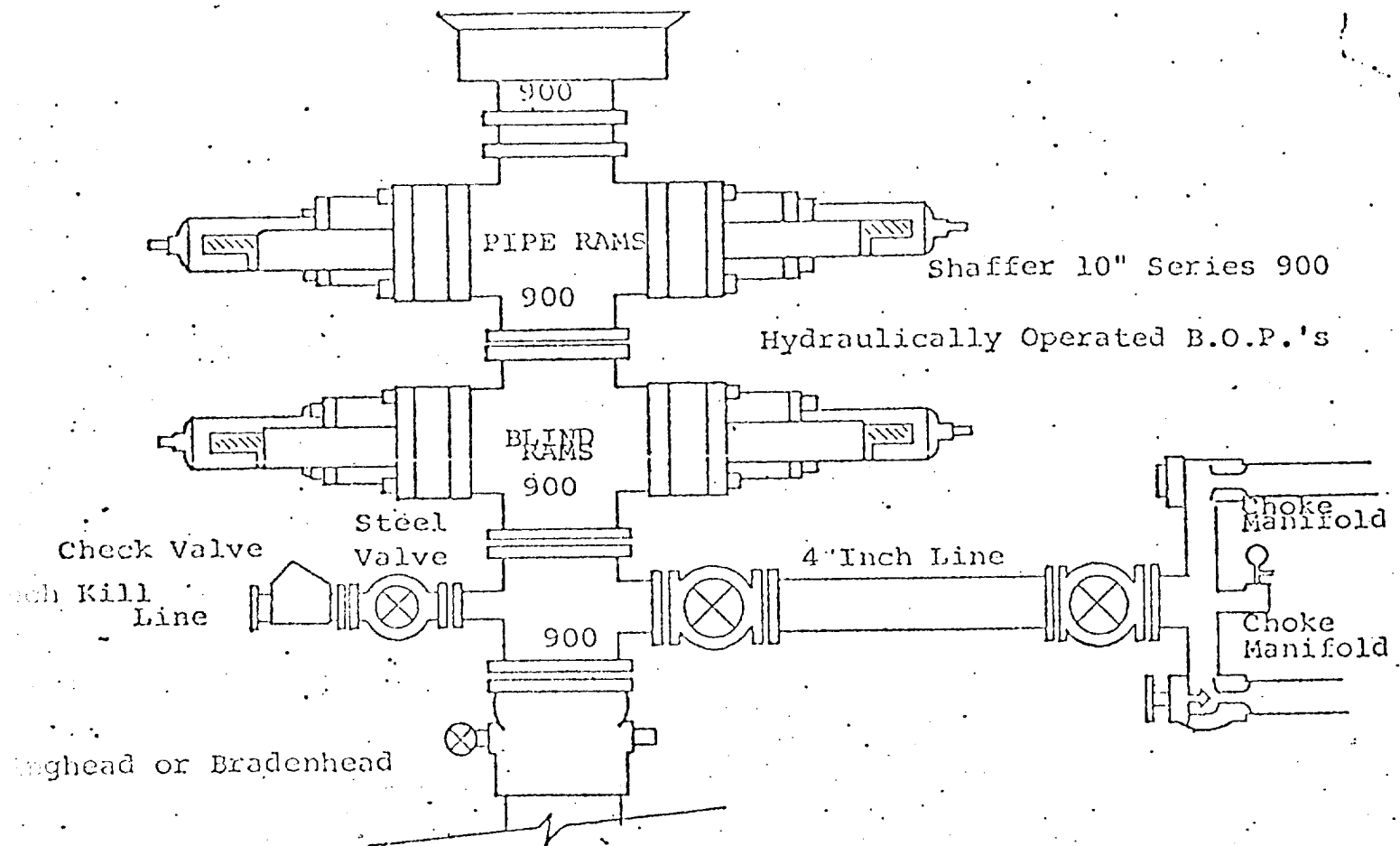
CERTIFICATION

I hereby certify that the information contained herein is true and complete to the best of my knowledge and belief.

Name
Gliserio Rodriguez
Position
Geographer
Company
Yates Petroleum Corporation
Date
3-3-81

I hereby certify that the well location shown on this plat was plotted from field notes of actual surveys made by me or under my supervision, and that the same is true and correct to the best of my knowledge and belief.

Date Surveyed
3-3-81
Registered Professional Engineer and/or Land Surveyor
Dan R. Reddy
Certificate No.
NM PE&LS #5412



FOLLOWING CONSTITUTE MINIMUM BLOWOUT PREVENTER REQUIREMENTS

- All preventers to be hydraulically operated with secondary manual controls installed prior to drilling out from under casing.
- Choke outlet to be a minimum of 4" diameter.
- Kill line to be of all steel construction of 2" minimum diameter.
- All connections from operating manifolds to preventers to be all steel, hole or tube a minimum of one inch in diameter.
- The available closing pressure shall be at least 15% in excess of that required with sufficient volume to operate the B.O.P.'s.
- All connections to and from preventer to have a pressure rating equivalent to that of the B.O.P.'s.
- Inside blowout preventer to be available on rig floor.
- Operating controls located a safe distance from the rig floor.
- Hole must be kept filled on trips below intermediate casing. Operator not responsible for blowouts resulting from not keeping hole full.
- B. P. float must be installed and used below zone of first gas intrusion.