

MEXICO OIL CONSERVATION COMMISSION
WELL LOCATION AND ACREAGE DEDICATION PLAT

Form C-102
Supersedes C-128
Effective 1-1-65

All distances must be from the outer boundaries of the Section.

Operator Read & Stevens, Inc.			Lease Gulf West Mesa		Well No. 3
Unit Letter N	Section 13	Township 16South	Range 31East	County Eddy	

Actual Footage Location of Well:

730 feet from the **South** line and **1910** feet from the **West** line

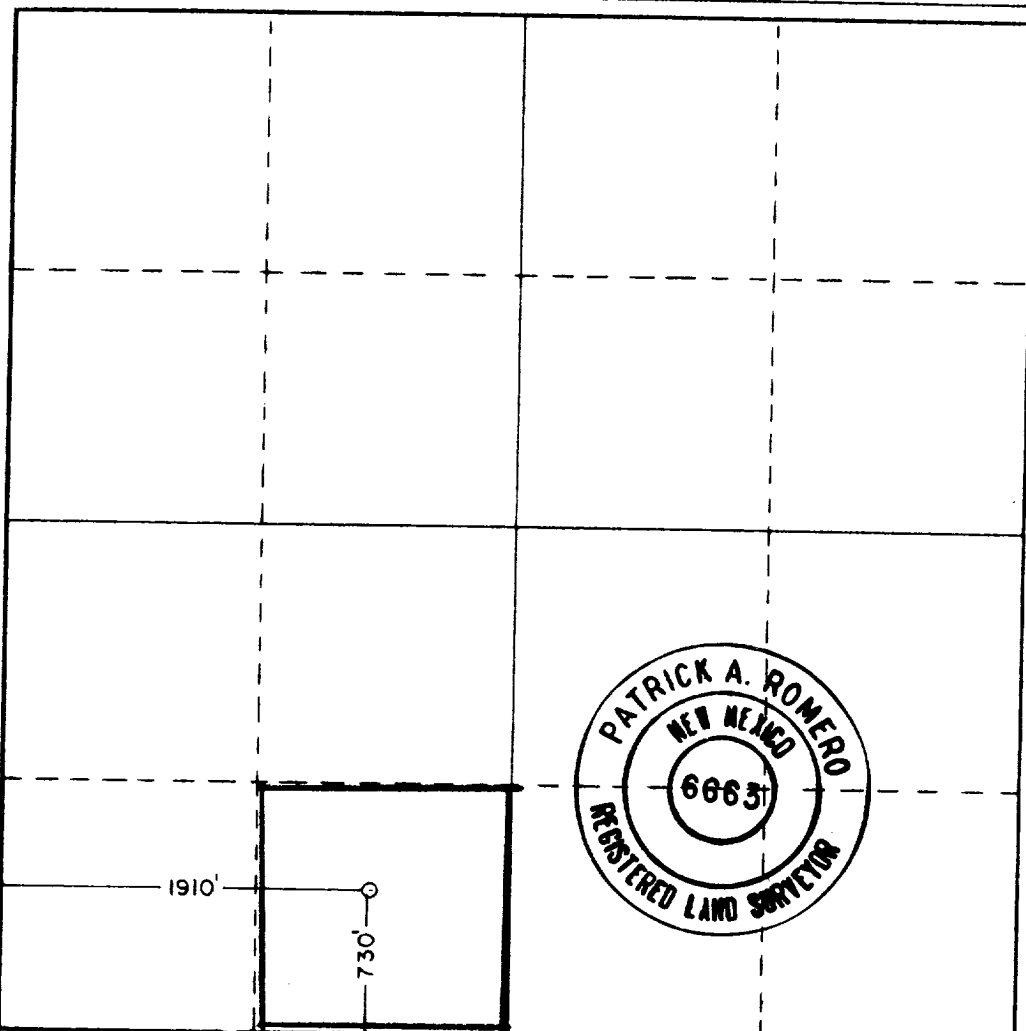
Ground Level Elev. 4493.1'	Producing Formation Pennsylvanian Sand	Pool Und Bunkerhill Pennsylvanian	Dedicated Acreage: 40 Acres
--------------------------------------	--	---	---------------------------------------

1. Outline the acreage dedicated to the subject well by colored pencil or hachure marks on the plat below.
2. If more than one lease is dedicated to the well, outline each and identify the ownership thereof (both as to working interest and royalty).
3. If more than one lease of different ownership is dedicated to the well, have the interests of all owners been consolidated by communitization, unitization, force-pooling, etc?

☐ Yes ☐ No If answer is "yes," type of consolidation _____

If answer is "no," list the owners and tract descriptions which have actually been consolidated. (Use reverse side of this form if necessary.) _____

No allowable will be assigned to the well until all interests have been consolidated (by communitization, unitization, forced-pooling, or otherwise) or until a non-standard unit, eliminating such interests, has been approved by the Commission.



CERTIFICATION

I hereby certify that the information contained herein is true and complete to the best of my knowledge and belief.

Susie Russell

Name
Susie Russell
Position
Authorized Agent
Company
Read & Stevens, Inc.

Date
May 11, 1981

I hereby certify that the well location shown on this plat was plotted from field notes of actual surveys made by me or under my supervision, and that the same is true and correct to the best of my knowledge and belief.

Date Surveyed
May 7, 1981

Registered Professional Engineer and/or Land Surveyor

Patrick A. Romero

Certificate No. **JOHN W. WEST 876**
PATRICK A. ROMERO 6663
Ronald J. Eidson 3239

