

30-015-23717

Form C-101  
Revised 1-1-65

## NEW MEXICO OIL CONSERVATION COMMISSION

MAR 23 1981

O. C. D.

ARTESIA OFFICE

5A. Indicate Type of Lease

STATE ☒ FEE ☐

5. State Oil &amp; Gas Lease No.

B-2071

7. Unit Agreement Name

8. Farm or Lease Name

NG Phillips St.

9. Well No.

26

10. Field and Pool, or Wildcat

East Empire Yates SR

12. County

Eddy

19. Proposed Depth

900'

19A. Formation

Seven Rivers

20. Rotary or C.T.

Rotary

21. Elevations (Show whether DF, RT, etc.)

3631' Gr

21A. Kind &amp; Status Plug. Bond

Statewide active

21B. Drilling Contractor

Stewart Bros. Drlg.

22. Approx. Date Work will start

3/24/81

23.

## PROPOSED CASING AND CEMENT PROGRAM

| SIZE OF HOLE | SIZE OF CASING | WEIGHT PER FOOT | SETTING DEPTH | SACKS OF CEMENT    | EST. TOP |
|--------------|----------------|-----------------|---------------|--------------------|----------|
| 12 1/2"      | 8 5/8"         | 24#             | 80'           | Ready mix          |          |
| 7 7/8"       | 4 1/2"         | 10.50#          | 900'          | 350 sax, circulate |          |

We propose to drill to 80', set 8 5/8" 24# casing, ready mix to surface, drill on to 900' to test the Seven Rivers formation, set 900' of 4 1/2" 10.50# casing, cement w/350 sax and attempt to circulate.

APPROVAL VALID FOR 180 DAYS  
PERMIT EXPIRES 9-24-81  
UNLESS DRILLING UNDERWAY

IN ABOVE SPACE DESCRIBE PROPOSED PROGRAM: IF PROPOSAL IS TO DEEPEN OR PLUG BACK, GIVE DATA ON PRESENT PRODUCTIVE ZONE AND PROPOSED NEW PRODUCTIVE ZONE. GIVE BLOWOUT PREVENTER PROGRAM, IF ANY.

I hereby certify that the information above is true and complete to the best of my knowledge and belief.

Signed Carolyn Davis Title Production Clerk Date 3/20/81

(This space for State Use)

APPROVED BY

W. A. Gressett

TITLE

SUPERVISOR, DISTRICT II

DATE

MAR 24 1981

CONDITIONS OF APPROVAL, IF ANY:

Cement must be circulated to  
surface behind 8 5/8" & 4 1/2" casing

Notify N.J.O. to witness cementing  
the 4 1/2" casing

**MEXICO OIL CONSERVATION COMMISSION  
WELL LOCATION AND ACREAGE DEDICATION PLAT**

Form C-102  
Supersedes C-128  
Effective 1-1-65

All distances must be from the outer boundaries of the Section.

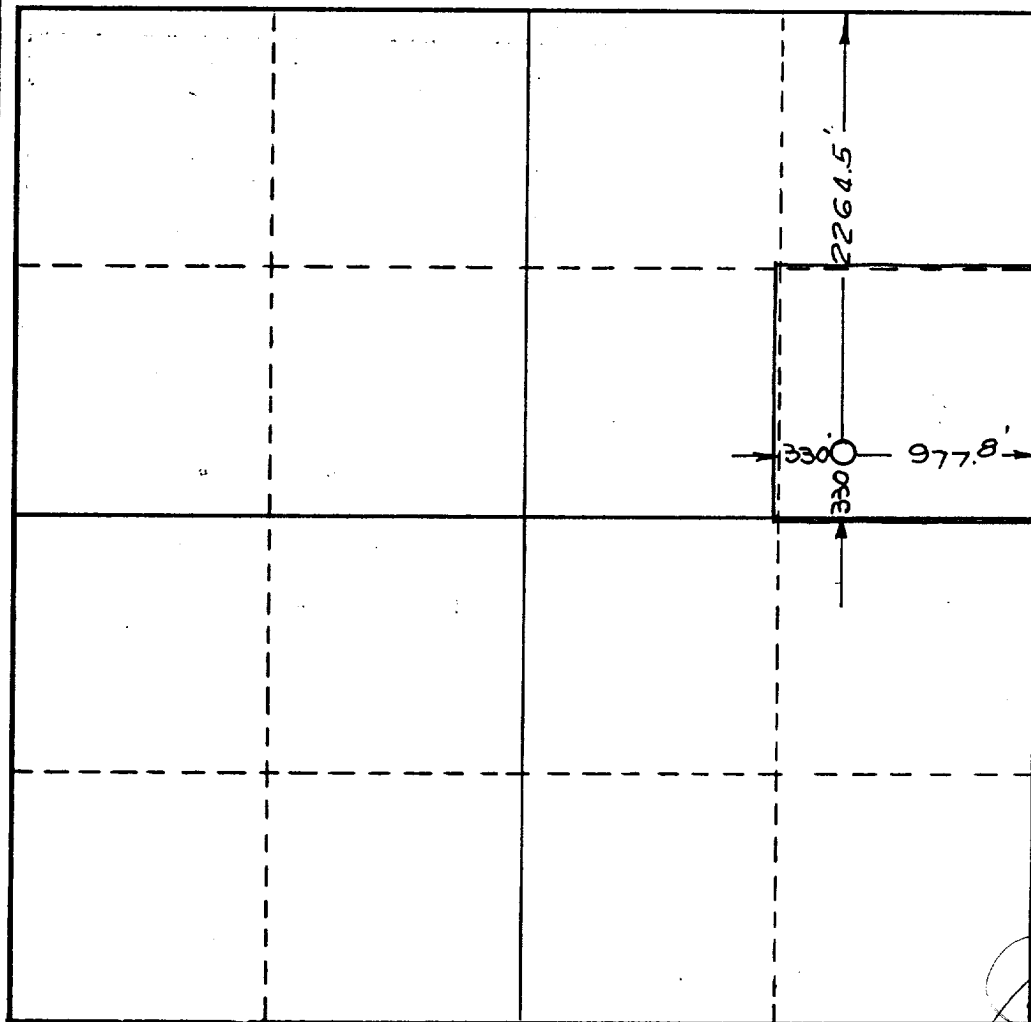
|   |  |                                     |                                       |                       |                       |
|---|--|-------------------------------------|---------------------------------------|-----------------------|-----------------------|
| Operator<br><b>MARBOB ENERGY CORPORATION</b>  |  |                                     | Lease<br><b>N. G. PHILLIPS STATE</b>  |                       | Well No.<br><b>26</b> |
| Unit Letter<br><b>H</b>   | Section<br><b>27</b>                       | Township<br><b>17 South</b>         | Range<br><b>28 East</b>               | County<br><b>EDDY</b> |                       |
| Actual Footage Location of Well:<br><b>2264.5</b> feet from the <b>North</b> line and <b>977.8</b> feet from the <b>East</b> line |  |                                     |                                       |                       |                       |
| Ground Level Elev.<br><b>3631</b>   | Producing Formation<br><b>Seven Rivers</b> | Pool<br><b>East Empire Yates SR</b> | Dedicated Acreage:<br><b>40</b> Acres |                       |                       |

1. Outline the acreage dedicated to the subject well by colored pencil or hachure marks on the plat below.
2. If more than one lease is dedicated to the well, outline each and identify the ownership thereof (both as to working interest and royalty).
3. If more than one lease of different ownership is dedicated to the well, have the interests of all owners been consolidated by communitization, unitization, force-pooling, etc?

☐ Yes    ☐ No    If answer is "yes," type of consolidation \_\_\_\_\_

If answer is "no," list the owners and tract descriptions which have actually been consolidated. (Use reverse side of this form if necessary.) \_\_\_\_\_

No allowable will be assigned to the well until all interests have been consolidated (by communitization, unitization, forced-pooling, or otherwise) or until a non-standard unit, eliminating such interests, has been approved by the Commission.



**CERTIFICATION**

I hereby certify that the information contained herein is true and complete to the best of my knowledge and belief.

*Carolyn Orris*

Name  
**Carolyn Orris**  
Position  
**Production Clerk**  
Company  
**Marbob Energy Corp.**

Date  
**2/20/81**

I hereby certify that the well location shown on this plat was plotted from field notes of actual surveys made by me or under my supervision, and that the same is true and correct to the best of my knowledge and belief.

Date Surveyed  
**February 16, 1981**

Registered Professional Engineer  
and/or Land Surveyor

*John W. Stearns*

Certificate No.

**1559**

