

UNITED STATES
DEPARTMENT OF THE INTERIOR
GEOLOGICAL SURVEY

APPLICATION FOR PERMIT TO DRILL, DEEPEN, OR PLUG BACK

1a. TYPE OF WORK

DRILL ☒DEEPEN ☐PLUG BACK ☐

b. TYPE OF WELL

OIL
WELL ☒GAS
WELL ☐

OTHER

SINGLE
ZONE ☒MULTIPLE
ZONE ☐

2. NAME OF OPERATOR

Lawbar Petroleum, Inc. ✓

3. ADDRESS OF OPERATOR

C-115 Petroleum Center, San Antonio, Texas 78209

4. LOCATION OF WELL (Report location clearly and in accordance with any State requirements.*)

At surface

660 FNL & 660 FWL Sec. 6-T16S-R30E

At proposed prod. zone

Same

14. DISTANCE IN MILES AND DIRECTION FROM NEAREST TOWN OR POST OFFICE*

10 Miles North of Loco Hills

15. DISTANCE FROM PROPOSED*

LOCATION TO NEAREST
PROPERTY OR LEASE LINE, FT.
(Also to nearest drlg. unit line, if any)

660'

16. NO. OF ACRES IN LEASE

318

17. NO. OF ACRES ASSIGNED
TO THIS WELL

40

18. DISTANCE FROM PROPOSED LOCATION*

TO NEAREST WELL, DRILLING, COMPLETED,
OR APPLIED FOR, ON THIS LEASE, FT.

None

19. PROPOSED DEPTH

2650'

20. ROTARY OR CABLE TOOLS

Cable Tools

21. ELEVATIONS (Show whether DF, RT, GR, etc.)

3790.9' GR

22. APPROX. DATE WORK WILL START*

August 25, 1981

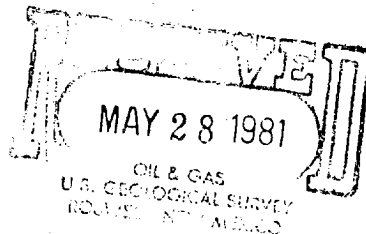
23.

PROPOSED CASING AND CEMENTING PROGRAM

SIZE OF HOLE	SIZE OF CASING	WEIGHT PER FOOT	SETTING DEPTH	QUANTITY OF CEMENT
10"	8-5/8"	24"	325'	100 Sacks CIRCULATE
8"	4-1/2"	10.5	TD	135 Sacks

We propose to drill this well to 2650' and test the Grayburg and Queen Formations.
If one of these zones is found productive, the zone will be acidized and sand fraced.
Mud Program: Cable tool hole, no rotary mud system used
BOP Program: Cable tools will be used.

Gas is not dedicated.



IN ABOVE SPACE DESCRIBE PROPOSED PROGRAM: If proposal is to deepen or plug back, give data on present productive zone and proposed new productive zone. If proposal is to drill or deepen directionally, give pertinent data on subsurface locations and measured and true vertical depths. Give blowout preventer program, if any.

24.

SIGNED

Les J. Summers

TITLE

Geologist

DATE

5/26/81

(This space for Federal or State office use)

PERMIT NO.

APPROVED

APPROVAL DATE

(U.S. Sec.) GEORGE H. STEWART

APPROVED BY

TITLE

DATE

CONDITIONS OF APPROVAL, IF ANY:

JUN 4 1981

FOR

JAMES A. GILLHAM
DISTRICT SUPERVISOR

*See Instructions On Reverse Side

NEW MEXICO OIL CONSERVATION COMMISSION
WELL LOCATION AND ACREAGE DEDICATION PLAT

Form C-102
Supersedes C-128
Effective 1-1-85

All distances must be from the outer boundaries of the Section.

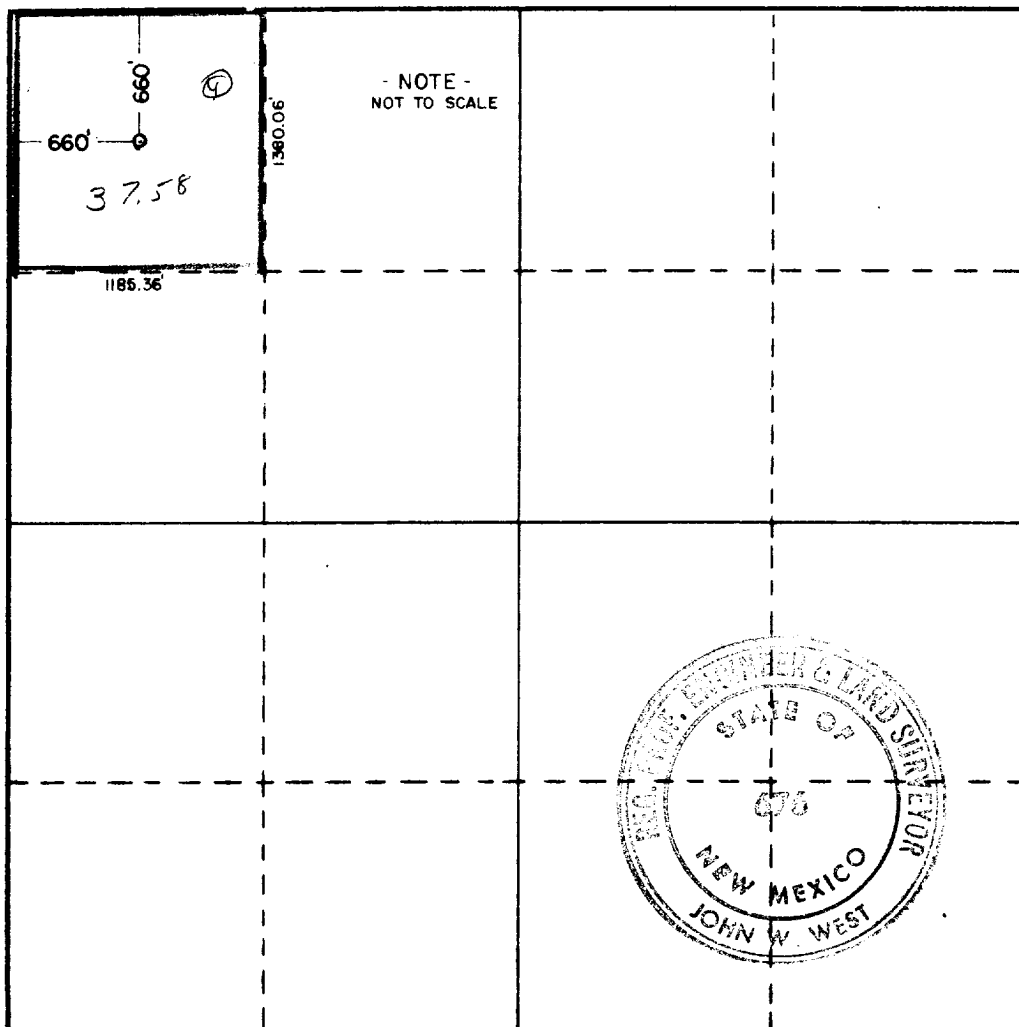
Operator Lawbar Petroleum Inc.			Lease Mee Fed.			Well No. 1		
Unit Letter D	Section 6	Township 16 South		Range 30 East	County Eddy			
Actual Footage Location of Well: 660 feet from the north line and 660 feet from the west line								
Ground Level Elev. 3790.9		Producing Formation R-G-SAN ANDRES			Pool		Dedicated Acreage: 3758.40 Acres	

1. Outline the acreage dedicated to the subject well by colored pencil or hatchure marks on the plat below.
2. If more than one lease is dedicated to the well, outline each and identify the ownership thereof (both as to working interest and royalty).
3. If more than one lease of different ownership is dedicated to the well, have the interests of all owners been consolidated by communitization, unitization, force-pooling, etc?

☐ Yes ☐ No If answer is "yes," type of consolidation _____

If answer is "no," list the owners and tract descriptions which have actually been consolidated. (Use reverse side of this form if necessary.) _____

No allowable will be assigned to the well until all interests have been consolidated (by communitization, unitization, forced-pooling, or otherwise) or until a non-standard unit, eliminating such interests, has been approved by the Commission.



CERTIFICATION

I hereby certify that the information contained herein is true and complete to the best of my knowledge and belief.

Name

Position

Company

Date

I hereby certify that the well location shown on this plat was plotted from field notes of actual surveys made by me or under my supervision, and that the same is true and correct to the best of my knowledge and belief.

Date Surveyed

4/22/81

Registered Professional Engineer and/or Land Surveyor

John W. West
Certificate No. **JOHN W. WEST 876**
PATRICK A. ROMERO 8089
Ronald J. Eideen 3239



NEW MEXICO OIL CONSERVATION COMMISSION
WELL LOCATION AND ACREAGE DEDICATION PLAT

Form C-102
Supersedes C-128
Effective 1-1-65

All distances must be from the outer boundaries of the Section.

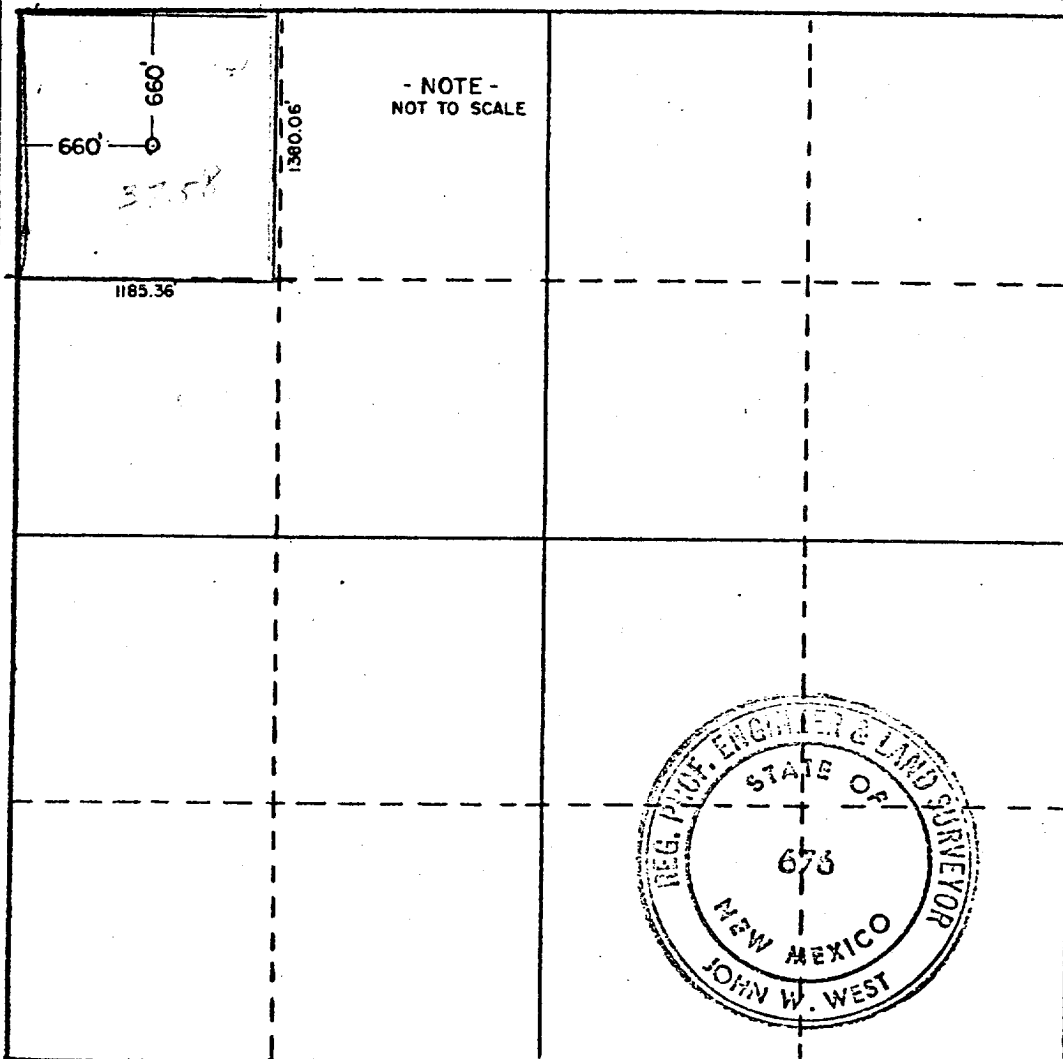
Operator Lawbar Petroleum Inc.			Lease Mee Fed.			Well No. 1		
Unit Letter D	Section 6	Township 16 South		Range 30 East	County Eddy			
Actual Footage Location of Well: 660 feet from the north line and 660 feet from the west line								
Ground Level Elev. 3790.9		Producing Formation San Andres			Pool Wildcat		Dedicated Acreage: 27.54 40 Acres	

1. Outline the acreage dedicated to the subject well by colored pencil or hachure marks on the plat below.
2. If more than one lease is dedicated to the well, outline each and identify the ownership thereof (both as to working interest and royalty).
3. If more than one lease of different ownership is dedicated to the well, have the interests of all owners been consolidated by communitization, unitization, force-pooling, etc?

☐ Yes ☐ No If answer is "yes," type of consolidation _____

If answer is "no," list the owners and tract descriptions which have actually been consolidated. (Use reverse side of this form if necessary.) _____

No allowable will be assigned to the well until all interests have been consolidated (by communitization, unitization, forced-pooling, or otherwise) or until a non-standard unit, eliminating such interests, has been approved by the Commission.



CERTIFICATION

I hereby certify that the information contained herein is true and complete to the best of my knowledge and belief.

Leo J. Lammers

Name

Geologist

Position

Lawbar Petroleum

Company

5/29/81

Date

I hereby certify that the well location shown on this plat was plotted from field notes of actual surveys made by me or under my supervision, and that the same is true and correct to the best of my knowledge and belief.

Date Surveyed

4/22/81

Registered Professional Engineer and/or Land Surveyor

John W. West

Certificate No. **JOHN W. WEST 676**
PATRICK A. ROMERO 6863
Ronald J. Eidson 3239