

UNITED STATES  
DEPARTMENT OF THE INTERIOR  
GEOLOGICAL SURVEY

APPLICATION FOR PERMIT TO DRILL, DEEPEN, OR PLUG BACK

1a. TYPE OF WORK  
DRILL ☒ DEEPEN ☐ PLUG BACK ☐

b. TYPE OF WELL  
OIL WELL ☒ GAS WELL ☐ OTHER ☐ SINGLE ZONE ☐ MULTIPLE ZONE ☐

2. NAME OF OPERATOR  
Yates Petroleum Corporation

3. ADDRESS OF OPERATOR  
207 South 4th Street, Artesia, New Mexico 88210

4. LOCATION OF WELL (Report location clearly and in accordance with any State requirements.)\*  
At surface 330' FNL and 990' FWL  
At proposed prod. zone

14. DISTANCE IN MILES AND DIRECTION FROM NEAREST TOWN OR POST OFFICE\*  
5 miles SW of Artesia, New Mexico

15. DISTANCE FROM PROPOSED\* LOCATION TO NEAREST PROPERTY OR LEASE LINE, FT. (Also to nearest drlg. unit line, if any)  
330'

18. DISTANCE FROM PROPOSED LOCATION\* TO NEAREST WELL, DRILLING, COMPLETED, OR APPLIED FOR, ON THIS LEASE, FT.  
660'

21. ELEVATIONS (Show whether DF, RT, GR, etc.)  
3539' GL

23. PROPOSED CASING AND CEMENTING PROGRAM

SIZE OF HOLE	SIZE OF CASING	WEIGHT PER FOOT	SETTING DEPTH	QUANTITY OF CEMENT
15"	10 3/4"	32#	approx, 200'	circulate
9 1/2"	7"	20#	approx, 1150	circulate
6 1/4"	5 1/2 and 4 1/2"	9.5 and 14#	TD	125 sx

We propose to drill a fifth San Andres well in this 40 acre unit. Approximately 200' of surface casing will be set to shut off gravel and casing, and intermediate casing will be set 100' below the Artesian Water Zone. A tapered 5 1/2" and 4 1/2" oil string will be set, perforated and stimulated as needed for production.

MUD PROGRAM: Gel and LCM from surface to 1150', fresh water to TD

BOP PROGRAM: BOP's will be installed on the 7" casing and tested

GAS NOT DEDICATED.

IN ABOVE SPACE DESCRIBE PROPOSED PROGRAM: If proposal is to deepen or plug back, give data on present productive zone and proposed new productive zone. If proposal is to drill or deepen directionally, give pertinent data on subsurface locations and measured and true vertical depths. Give blowout preventer program, if any.

24. SIGNED George H. Stewart TITLE Regulatory Manager DATE 5/11/81

(This space for Federal or State office use)

PERMIT NO. APPROVAL DATE

APPROVED BY George H. Stewart TITLE Regulatory Manager DATE 5/11/81

FOR  
JAMES A. GILMAN  
DISTRICT SUPERVISOR

30-015-23814  
5. LEASE DESIGNATION AND SERIAL NO.  
NM 054434 RECEIVED  
6. IF INDIAN, ALLOTTEE OR TRIBE NAME  
7. UNIT AGREEMENT NAME  
JUN 3 1981  
O.C.D.  
8. FARM OR LEASE NAME  
Federal BQ ARTESIA, OFFICE  
9. WELL NO.  
5  
10. FIELD AND POOL, OR WILDCAT  
Eagle Creek SA  
11. SEC., T., R., M., OR BLK. AND SURVEY OR AREA  
UL-D  
Sec. 27-17S-25E  
12. COUNTY OR PARISH  
Eddy  
13. STATE  
NM

DECEASED  
MAY 12 1981  
OIL & GAS  
U.S. GEOLOGICAL SURVEY  
ROSWell, NEW MEXICO

NEW MEXICO OIL CONSERVATION COMMISSION  
WELL LOCATION AND ACREAGE DEDICATION PLAT

Form C-102  
Supersedes C-12  
Effective 1-1-65

All distances must be from the outer boundaries of the Section.

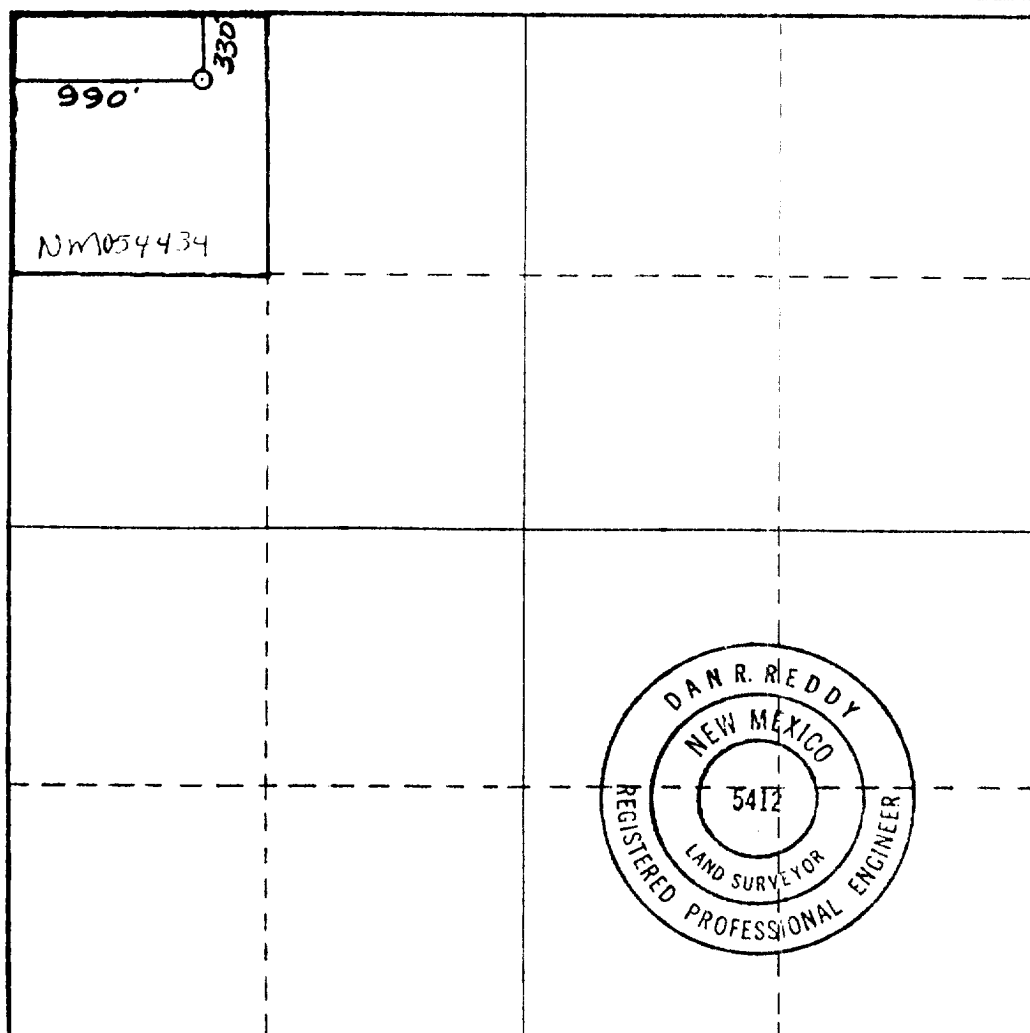
Operator <b>YATES PETROLEUM CORPORATION</b>			Lease <b>Federal BQ</b>		Well No. <b>5</b>
Unit Letter <b>D</b>	Section <b>27</b>	Township <b>17 South</b>	Range <b>25 East</b>	County <b>Eddy</b>	
Actual Footage Location of Well: <b>330</b> feet from the <b>North</b> line and <b>990</b> feet from the <b>West</b> line					
Ground Level Elev. <b>3539.</b>	Producing Formation <b>SAN JUAN</b>	Pool <b>EAGLE CREEK SAN ANDRES</b>	Dedicated Acreage: <b>40</b> Acres		

1. Outline the acreage dedicated to the subject well by colored pencil or hachure marks on the plat below.
2. If more than one lease is dedicated to the well, outline each and identify the ownership thereof (both as to working interest and royalty).
3. If more than one lease of different ownership is dedicated to the well, have the interests of all owners been consolidated by communitization, unitization, force-pooling, etc?

☐ Yes ☐ No If answer is "yes," type of consolidation \_\_\_\_\_

If answer is "no," list the owners and tract descriptions which have actually been consolidated. (Use reverse side of this form if necessary.) \_\_\_\_\_

No allowable will be assigned to the well until all interests have been consolidated (by communitization, unitization, forced-pooling, or otherwise) or until a non-standard unit, eliminating such interests, has been approved by the Commission.



**CERTIFICATION**

I hereby certify that the information contained herein is true and complete to the best of my knowledge and belief.

*Gliserio Rodriguez*  
Name

**GLISERIO RODRIGUEZ**  
Position

**GEOGRAPHER**  
Company

**YATES PETROLEUM CORP**  
Date

**5-11-81**

I hereby certify that the well location shown on this plat was plotted from field notes of actual surveys made by me or under my supervision, and that the same is true and correct to the best of my knowledge and belief.

Date Surveyed

**December 13, 1980**

Registered Professional Engineer  
and/or Land Surveyor

*Dan R. Reddy*  
Certificate No.

**NM PE&LS #5412**

