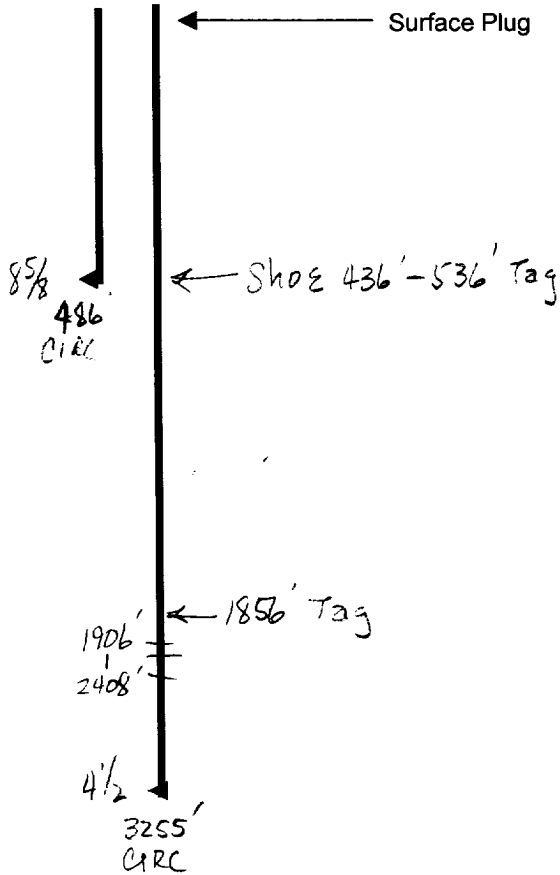


Operator Marbob Energy  
 Well Gillespie St #2  
 Unit B Section 27 Township 17 Range 28  
 API # 30-015-23984

**TOPS**

Yates	500
7 Rivers	800
Bowers	1100
Queen	1465
Grayburg	1680
San Andres	1912



- \* Contact OCD 24 hrs. prior to any work done.
- \* Salt gel mud consisting of 10# brine with 25# of gel per barrel must be placed between each plug.
- \* Install dry hole marker as per Rule 202.B.2
- \* Plugs are to be set from point indicated **up**.
- \* Plugs must not be less than 100' or 25 Sacks of cement, whichever is greater, unless specifically indicated.
- \* Shoe and stub plugs will be 50' above and below shoe or stub and tagged.
- \* Surface plug will be from 0' - 60'
- \* Where plugs are required, cement must be placed inside and outside of **all** casing string(s) in the correct footage or sacks required, **if no cement exists**.
- \* Plugs to be tagged will be indicated.

*to*