

STATE OF NEW MEXICO
ENERGY AND MINERALS DEPARTMENT

RECEIVED
CONSERVATION DIVISION
P. O. BOX 2088
SANTA FE, NEW MEXICO 87505
MAR 30 1982

30-015-24127
Form C-101
Revised 10-1-78

NO. OF COPIES RECEIVED	
DISTRIBUTION	
SANTA FE	1
FILE	1
U.S.G.S.	2
LAND OFFICE	1
OPERATOR	1

O. C. D.
ARTESIA, OFFICE

APPLICATION FOR PERMIT TO DRILL, DEEPEN, OR PLUG BACK

Type of Work
Type of Well DRILL ☒ DEEPEN ☐ PLUG BACK ☐
GIL WELL ☒ GAS WELL ☐ OTHER ☐ SINGLE ZONE ☒ MULTIPLE ZONE ☐

Name of Operator
Marbob Energy Corporation

Address of Operator
P.O. Drawer 217, Artesia, N.M. 88210

Location of Well
UNIT LETTER C LOCATED 330 FEET FROM THE North LINE
1980 FEET FROM THE West LINE OF SEC. 27 TWP. 17S RGE. 28E

5A. Indicate Type of Lease
STATE ☒ FEE ☐
5. State Oil & Gas Lease No.
B-2071
7. Unit Agreement Name
8. Form or Lease Name
Gillespie St.
9. Well No.
3
10. Field and Pool, or Wildcat
Red Lake Qn. Grbg. SA
17. County
Eddy

19. Proposed Depth 3250'
19A. Formation Grayburg-San Andres
19B. Rotary or C.T. Rotary
20. Approx. Date Work will start 4/8/82
21A. Kind & Status Plug. Bond Statewide active
21B. Drilling Contractor Salazar Bros. Drllg., Inc.
22. Approx. Date Work will start 4/8/82
23. Elevation (show whether D, H, K, etc.) 3619, 3590'-GR

PROPOSED CASING AND CEMENT PROGRAM

SIZE OF HOLE	SIZE OF CASING	WEIGHT PER FOOT	SETTING DEPTH	SACKS OF CEMENT	EST. TOP
12 1/4"	8 5/8"	24#	500'	Circulate	
7 7/8"	4 1/2"	10.50#	3250'	650 sax, attempt to circulate	

We propose to drill to 500', set 8 5/8" casing, cement, drill on to 3250' to test the Grayburg-San Andres formations, set 4 1/2" casing and cement.

Posted ID-1
API + NL Book
4-2-82

APPROVAL VALID FOR 180 DAYS
PERMIT EXPIRES 10-2-82
UNLESS DRILLING UNDERWAY

DOVE SPACE DESCRIBE PROPOSED PROGRAM: IF PROPOSAL IS TO DEEPEN OR PLUG BACK, GIVE DATA ON PRESENT PRODUCTIVE ZONE AND PROPOSED NEW PRODUCTIVE ZONE. GIVE BLOWOUT PREVENTER PROGRAM, IF ANY.

by certify that the information above is true and complete to the best of my knowledge and belief.

ed Carolyn Aris Title Production Clerk Date 3/29/82

(This space for State Use)

MOVED BY Mark Wether TITLE OIL AND GAS INSPECTOR DATE APR 2 1982

DITIONS OF APPROVAL, IF ANY:

**MEXICO OIL CONSERVATION COMMISSION
WELL LOCATION AND ACREAGE DEDICATION PLAT**

Form C-102
Supersedes C-128
Effective 1-1-65

All distances must be from the outer boundaries of the Section

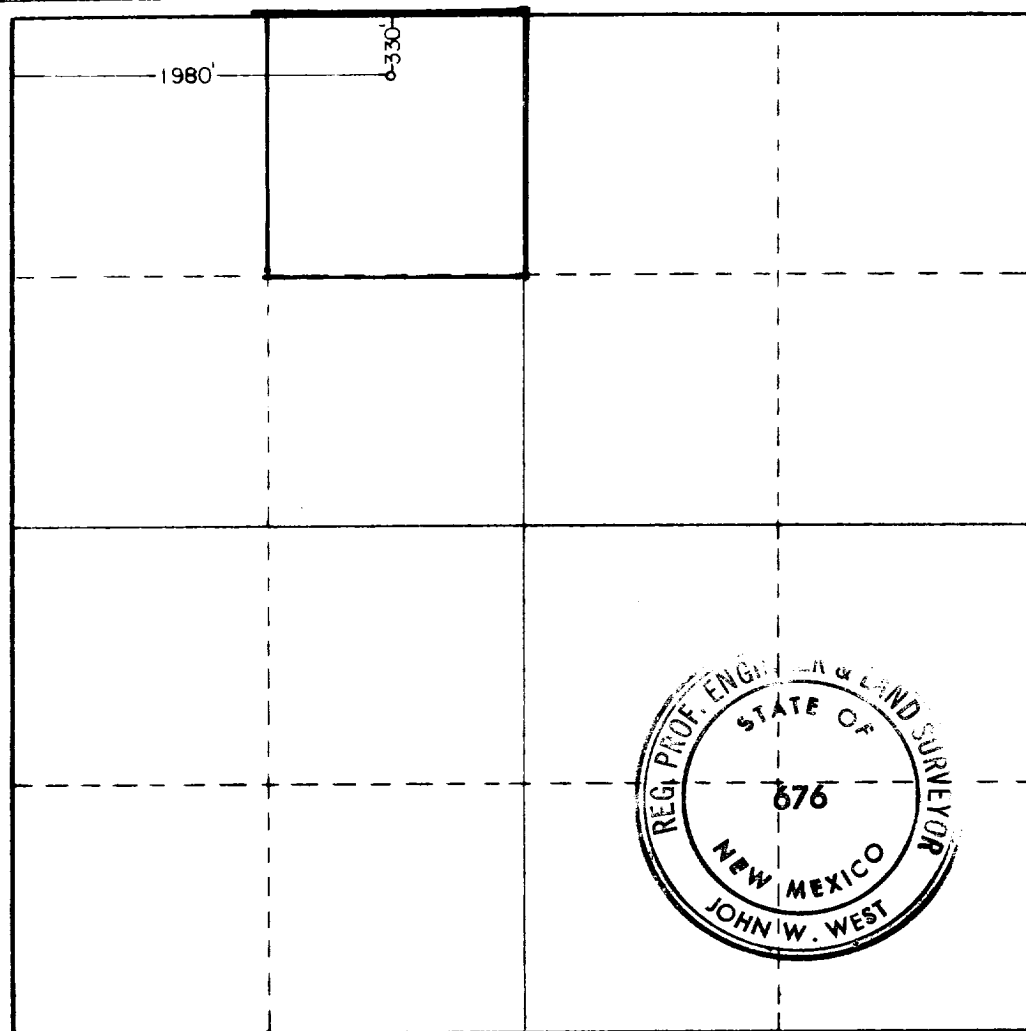
Operator MARBOB ENERGY CORP.			Lease GILLESPIE STATE		Well No. 3
Tract Letter C	Section 27	Township 17 SOUTH	Range 28 EAST	County EDDY	
Actual Well Location of Well: 330 feet from the NORTH line and 1980 feet from the WEST line					
Ground Level Elev. 3619.4	Producing Formation Grayburg-San Andres		Pool Red Lake On Grbg SA	Dedicated Acreage: 40 Acres	

- 1 Outline the acreage dedicated to the subject well by colored pencil or hachure marks on the plat below.
- 2 If more than one lease is dedicated to the well, outline each and identify the ownership thereof (both as to working interest and royalty).
- 3 If more than one lease of different ownership is dedicated to the well, have the interests of all owners been consolidated by communitization, unitization, force-pooling, etc?

☐ Yes ☐ No If answer is "yes," type of consolidation _____

If answer is "no," list the owners and tract descriptions which have actually been consolidated. (Use reverse side of this form if necessary.) _____

No allowable will be assigned to the well until all interests have been consolidated (by communitization, unitization, forced-pooling, or otherwise) or until a non-standard unit, eliminating such interests, has been approved by the Commission.



CERTIFICATION

I hereby certify that the information contained herein is true and complete to the best of my knowledge and belief.

Carolyn Orris

Name
Carolyn Orris

Position
Production Clerk

Company
Marbob Energy Corporation

Date
3/29/82

I hereby certify that the well location shown on this plat was plotted from field notes of actual surveys made by me or under my supervision, and that the same is true and correct to the best of my knowledge and belief.

Date Surveyed
3-24-82

Registered Professional Engineer and/or Land Surveyor
John W. West

Certificate No. **JOHN W. WEST 676**
PATRICK A. ROMERO 6868
Ronald J. Eidsen 3239

