

STATE OF NEW MEXICO
ENERGY AND MINERALS DEPARTMENT

L CONSERVATION DIVISION
P. O. BOX 2088
SANTA FE, NEW MEXICO 87501

30-015-24212

Form C-101
Revised 10-1-78

NO. OF COPIES RECEIVED	
DISTRIBUTION	
SANTA FE	1
FILE	1
U.S.G.S.	2
LAND OFFICE	
OPERATOR	1

RECEIVED
AUG 4 1982
O.C.D.
ARTESIA, OFFICE

5A. Indicate Type of Lease
STATE ☐ FEE ☒
5. State Oil & Gas Lease No.

APPLICATION FOR PERMIT TO DRILL, DEEPEN, OR PLUG BACK

Type of Work

DRILL ☒

DEEPEN ☐

PLUG BACK ☐

Type of Well

OIL WELL ☒

GAS WELL ☐

OTHER

SINGLE ZONE ☐

MULTIPLE ZONE ☐

Name of Operator

Yates Petroleum Corporation

Address of Operator

207 S. 4th, Artesia, New Mexico 88210

Location of Well

UNIT LETTER J

LOCATED 2310

FEET FROM THE South

7. Unit Agreement Name

8. Farm or Lease Name

Donegan "CE"

9. Well No.

2

10. Field and Pool, or Wildcat

Eagle Creek SA

17. County

Eddy

1650

FEET FROM THE East

LINE OF SEC. 28

TWP.

17S

25E

RANGE

19. Proposed Depth

appr. 1500'

19A. Formation

San Andres

20. Rotary or C.T.

Rotary

21. Elevations (Show whether DF, KI, etc.)

3556.' GL

21A. Kind & Status Plug. Bond

Blanket

21B. Drilling Contractor

L&M #2

22. Approx. Date Work will start

ASAP

PROPOSED CASING AND CEMENT PROGRAM

SIZE OF HOLE	SIZE OF CASING	WEIGHT PER FOOT	SETTING DEPTH	SACKS OF CEMENT	EST. TOP
14 1/2"	10 3/4"	30#	appr. 330'	200 sx	circulated
9 1/2"	7"	23#	appr. 1100'	400 sx	circulated
6 1/4"	4 1/2"	9.5#	appr. 1500'	125 sx	circulated

Propose to drill a San Andres test. Approximately 330' of surface casing will be run to shut off gravel and caving. 7" intermediate casing will be run and set 100' below the Artesian Zone. If commercial production is encountered a string will be run, perforated and stimulated for production.

MUD PROGRAM: FW gel and LCM to 1100' (or dry drill), water to TD.

BOP PROGRAM: BOP's will be installed on 7" casing and tested daily.

APPROVAL VALID FOR 180 DAYS
PERMIT EXPIRES 2-5-83
UNLESS DRILLING UNDERWAY

ABOVE SPACE DESCRIBE PROPOSED PROGRAM: IF PROPOSAL IS TO DEEPEN OR PLUG BACK, GIVE DATA ON PRESENT PRODUCTIVE ZONE AND PROPOSED NEW PRODUCTION ZONE. GIVE BLOWOUT PREVENTER PROGRAM, IF ANY.

I hereby certify that the information above is true and complete to the best of my knowledge and belief.

Signed Ken Brander Title Regulatory Coordinator

Date 8/4/82

(This space for State Use)

APPROVED BY M. L. Williams

TITLE SUPERVISOR, DISTRICT II

DATE AUG 5 1982

CONDITIONS OF APPROVAL, IF ANY:

Notify N.M.O.C.C. in sufficient time to witness cementing

the casing

OIL CONSERVATION DIVISION

STATE OF NEW MEXICO
ENERGY AND MINERALS DEPARTMENTP. O. BOX 2088
SANTA FE, NEW MEXICO 87501Form C-102
Revised 10-1-79

All distances must be from the outer boundaries of the Section.

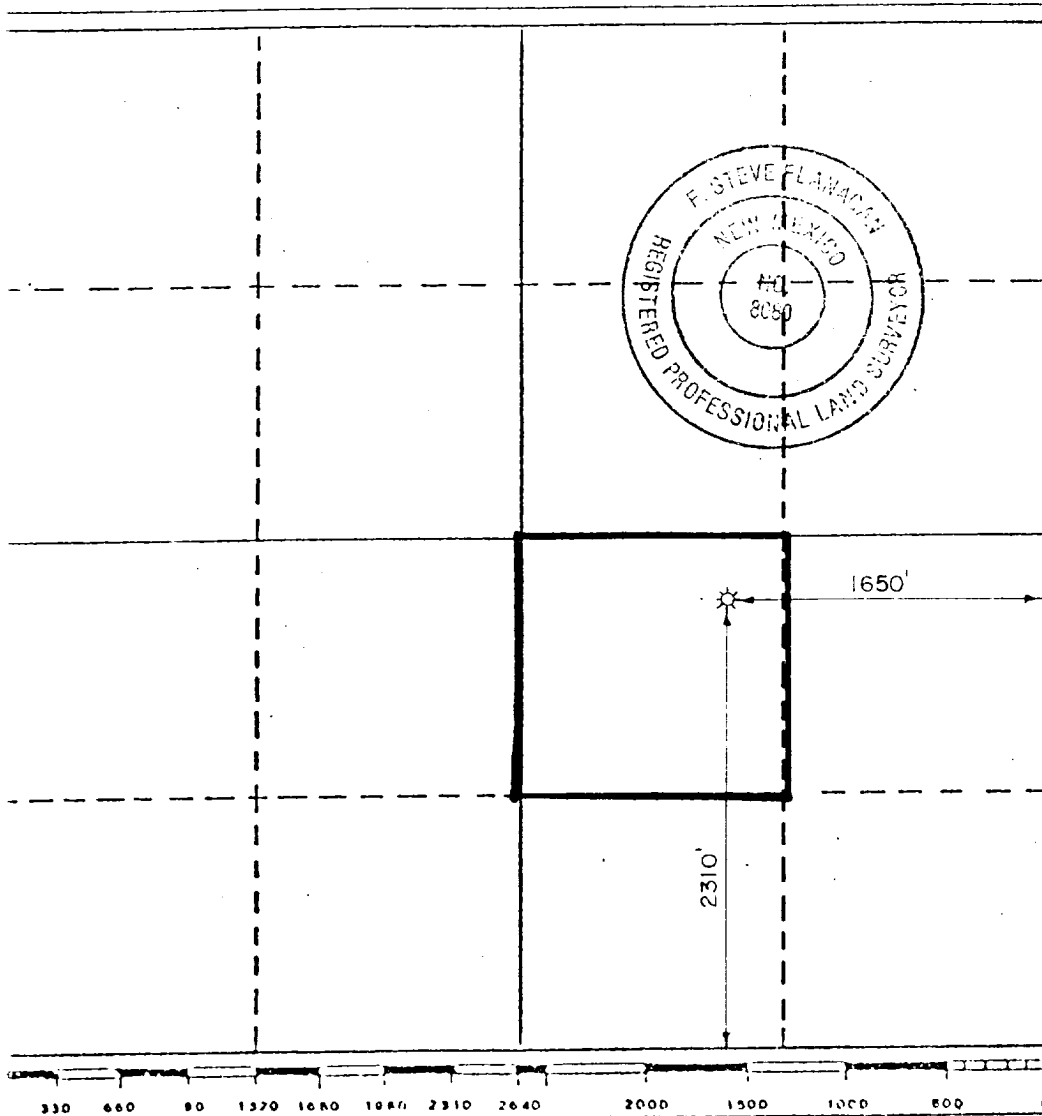
Operator YATES PETRO. CORP.			Lease DONEGAN "C.E."		Well No. 2
Init Letter J	Section 28	Township T 17 S	Range R 25 E	County EDDY COUNTY	
Actual Footage Location of Well:					
2310 feet from the South line and 1650 feet from the East line					
Ground Level Elev. 3556 ft.	Producing Formation San Andres	Pool Eagle Creek (S.A.)	Dedicated Acreage: 40 Acres		

- Outline the acreage dedicated to the subject well by colored pencil or hachure marks on the plat below.
- If more than one lease is dedicated to the well, outline each and identify the ownership thereof (both as to working interest and royalty).
- If more than one lease of different ownership is dedicated to the well, have the interests of all owners been consolidated by communitization, unitization, force-pooling, etc?

☐ Yes ☐ No If answer is "yes," type of consolidation _____

If answer is "no," list the owners and tract descriptions which have actually been consolidated. (Use reverse side of this form if necessary.) _____

No allowable will be assigned to the well until all interests have been consolidated (by communitization, unitization, forced-pooling, or otherwise) or until a non-standard unit, eliminating such interests, has been approved by the Division.



CERTIFICATION

I hereby certify that the information contained herein is true and complete to the best of my knowledge and belief.

Name

Ken Beardemphl

Position

Regulatory Coordinator

Company

Yates Petroleum Corp.

Date

8/4/82

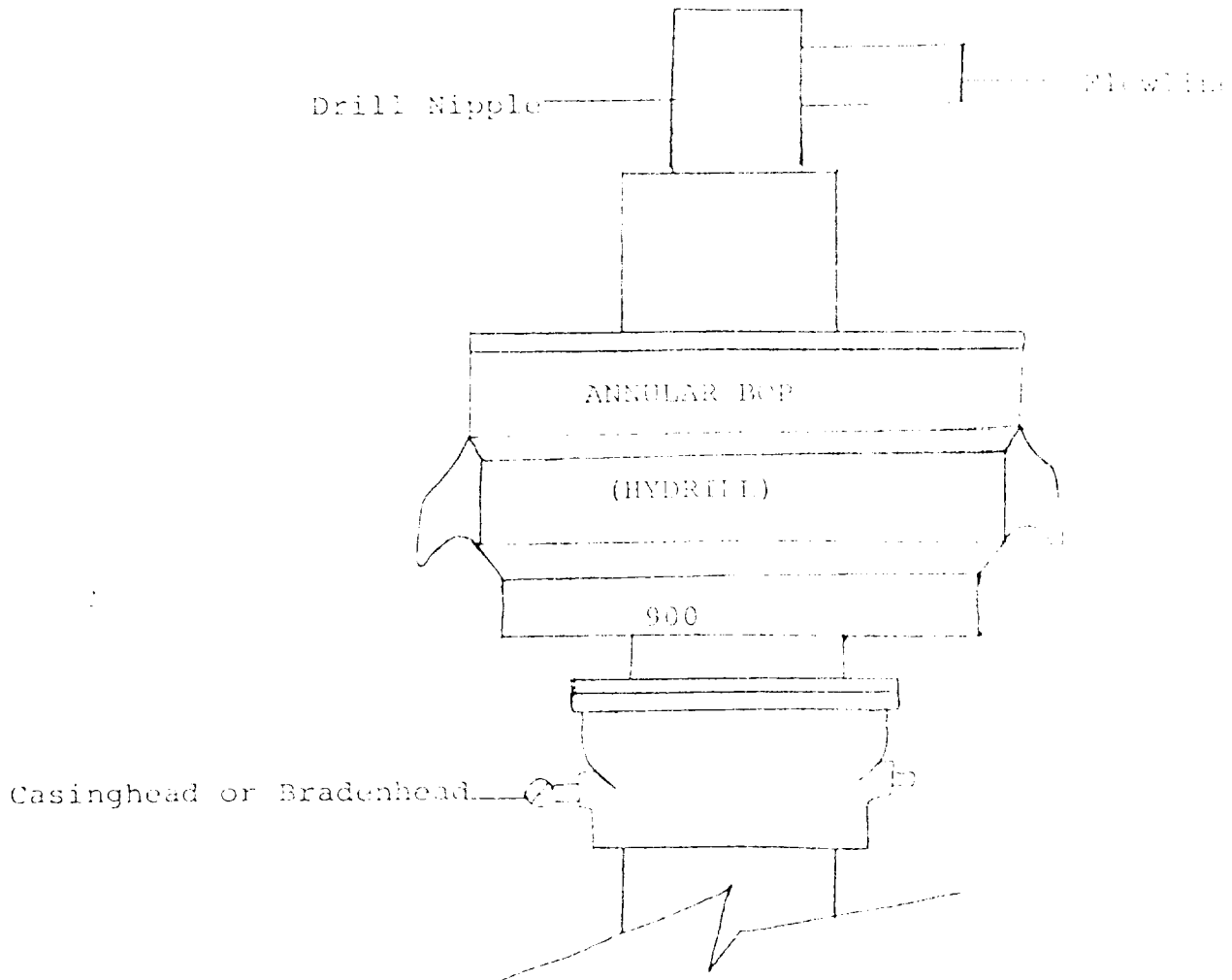
I hereby certify that the well location shown on this plot was plotted from field notes of actual surveys made by me or under my supervision, and that the same is true and correct to the best of my knowledge and belief.

August 3, 1982

Date Surveyed

F. Steve Flanagan
Registered Professional Engineer
and/or Land Surveyor

Certificate No. 8080



THE FOLLOWING CONSTITUTE MINIMUM BLOWOUT PREVENTER REQUIREMENTS

1. All preventers to be hydraulically operated with secondary manual controls installed prior to drilling out from under casing.
2. All connections from operating manifolds to preventers to be all steel. Hole or tube a minimum of one inch in diameter.
3. The available closing pressure shall be at least 15% in excess of that required with sufficient volume to operate the BOP's.
4. All connections to and from preventer to have a pressure rating equivalent to that of the BOP's.
5. Hole must be kept filled on trips below intermediate casing.